

Product Datasheet

SP1 Antibody - BSA Free NBP2-20460

Unit Size: 0.1 ml

Aliquot and store at -20C or -80C. Avoid freeze-thaw cycles.

www.novusbio.com



technical@novusbio.com

Publications: 2

Protocols, Publications, Related Products, Reviews, Research Tools and Images at:
www.novusbio.com/NBP2-20460

Updated 9/9/2025 v.20.1

Earn rewards for product
reviews and publications.

Submit a publication at www.novusbio.com/publications

Submit a review at www.novusbio.com/reviews/destination/NBP2-20460



NBP2-20460

SP1 Antibody - BSA Free

Product Information

Unit Size	0.1 ml
Concentration	Concentrations vary lot to lot. See vial label for concentration. If unlisted please contact technical services.
Storage	Aliquot and store at -20C or -80C. Avoid freeze-thaw cycles.
Clonality	Polyclonal
Preservative	0.025% Proclin 300
Isotype	IgG
Purity	Antigen Affinity-purified
Buffer	PBS (pH 7), 20% Glycerol
Target Molecular Weight	81 kDa

Product Description

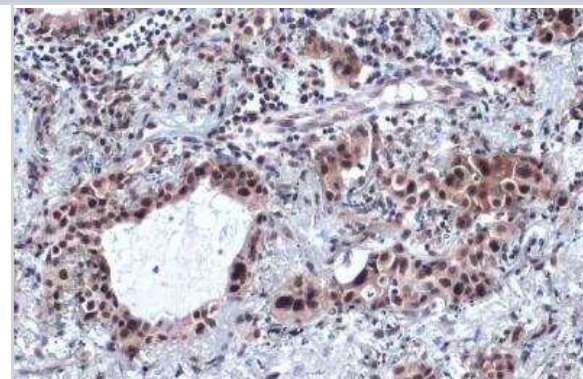
Description	Novus Biologicals Rabbit SP1 Antibody - BSA Free (NBP2-20460) is a polyclonal antibody validated for use in IHC, WB, ICC/IF, IP and ChIP. Anti-SP1 Antibody: Cited in 2 publications. All Novus Biologicals antibodies are covered by our 100% guarantee.
Host	Rabbit
Gene ID	6667
Gene Symbol	SP1
Species	Human, Mouse, Rat
Immunogen	Recombinant protein encompassing a sequence within the center region of human SP1. The exact sequence is proprietary.

Product Application Details

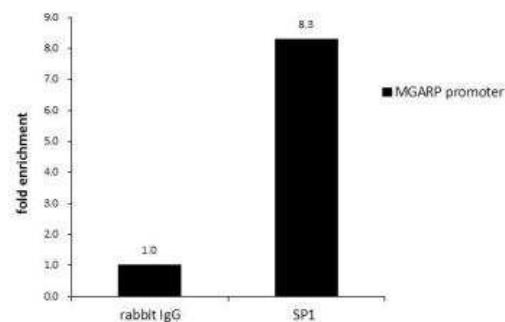
Applications	Western Blot, Immunohistochemistry-Paraffin, Immunocytochemistry/Immunofluorescence, Immunohistochemistry, Immunoprecipitation, Chromatin Immunoprecipitation (ChIP)
Recommended Dilutions	Western Blot 1:500-1:3000, Immunohistochemistry 1:100-1:1000, Immunocytochemistry/ Immunofluorescence 1:100-1:1000, Immunoprecipitation 1:100-1:500, Immunohistochemistry-Paraffin 1:100-1:1000, Chromatin Immunoprecipitation (ChIP)
Application Notes	Chip-Assay dependent

Images

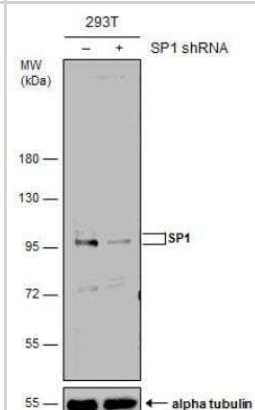
Immunohistochemistry-Paraffin: SP1 Antibody [NBP2-20460] - SP1 antibody detects SP1 protein at cytoplasm and nucleus by immunohistochemical analysis. Sample: Paraffin-embedded human lung cancer. SP1 stained by SP1 antibody diluted at 1:2000. Antigen Retrieval: Citrate buffer, pH 6.0, 15 min.



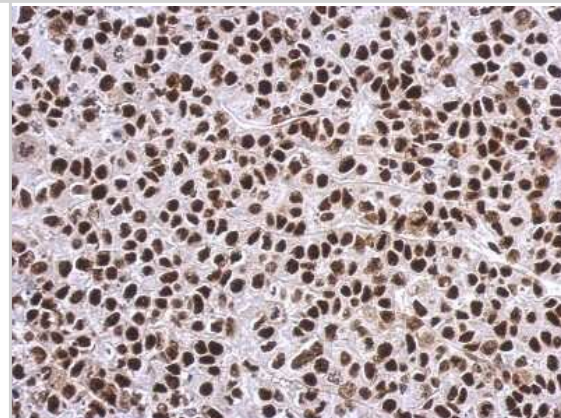
Chromatin Immunoprecipitation: SP1 Antibody [NBP2-20460] - ChIP was performed with 293T chromatin extract and 5 ug of either normal rabbit IgG or anti-SP1 antibody. The precipitated DNA was detected by PCR with primer set targeting to MGARP promoter.



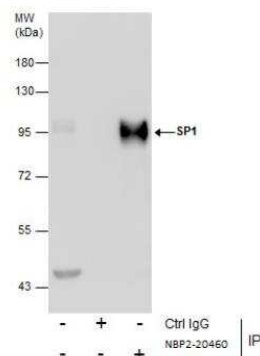
Western Blot: SP1 Antibody [NBP2-20460] - Non-transfected (-) and transfected (+) 293T whole cell extracts (50 ug) were separated by 7.5% SDS-PAGE, and the membrane was blotted with SP1 antibody. HRP-conjugated anti-rabbit IgG antibody was used to detect the primary antibody, and the signal was developed with Trident ECL plus-Enhanced.



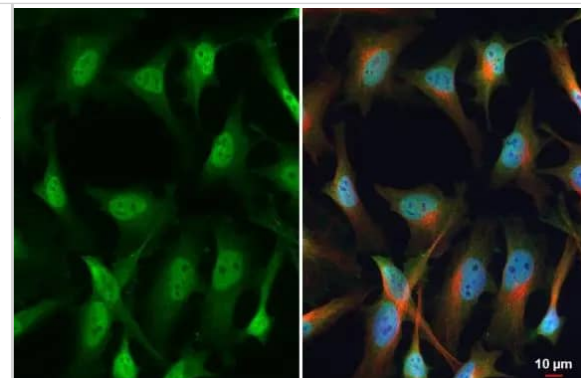
Immunohistochemistry-Paraffin: SP1 Antibody [NBP2-20460] - Immunohistochemical analysis of paraffin-embedded Hela xenograft, using antibody at 1:500 dilution.



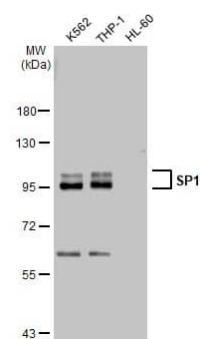
Immunoprecipitation: SP1 Antibody [NBP2-20460] - Immunoprecipitation of SP1 protein from THP-1 whole cell extracts using 5 ug of OCT1 antibody (NBP2-20460). Western blot analysis was performed using OCT1 antibody (NBP2-20460). EasyBlot anti-Rabbit IgG was used as a secondary reagent.



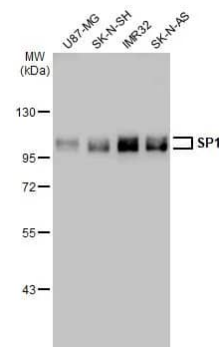
Immunocytochemistry/ Immunofluorescence: SP1 Antibody [NBP2-20460] - SP1 antibody detects SP1 protein at nucleus by immunofluorescent analysis. Sample: HeLa cells were fixed in 4% paraformaldehyde at RT for 15 min. Green: SP1 stained by SP1 antibody (NBP2-20460) diluted at 1:100. Red: alpha Tubulin, a cytoskeleton marker, stained by alpha Tubulin antibody [GT114] diluted at 1:1000. Blue: Fluoroshield with DAPI .



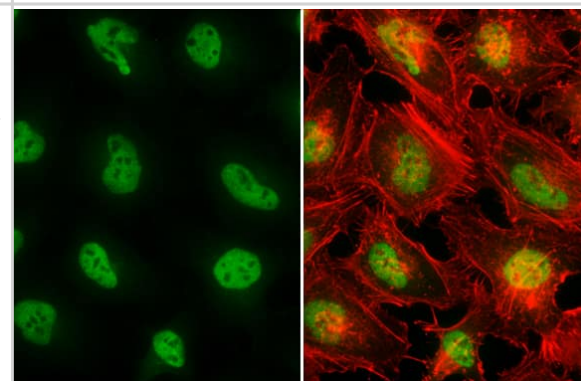
Western Blot: SP1 Antibody [NBP2-20460] - Various whole cell extracts (30 ug) were separated by 7.5% SDS-PAGE, and the membrane was blotted with SP1 antibody (NBP2-20460) diluted at 1:2000. The HRP-conjugated anti-rabbit IgG antibody was used to detect the primary antibody.



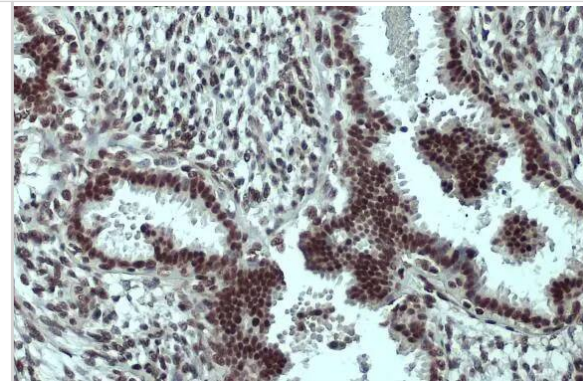
Western Blot: SP1 Antibody [NBP2-20460] - Various whole cell extracts (30 ug) were separated by 7.5% SDS-PAGE, and the membrane was blotted with SP1 antibody (NBP2-20460) diluted at 1:2000. The HRP-conjugated anti-rabbit IgG antibody was used to detect the primary antibody.



Immunocytochemistry/ Immunofluorescence: SP1 Antibody [NBP2-20460] - SP1 antibody detects SP1 protein at nucleus by immunofluorescent analysis. Sample: HeLa cells were fixed in 4% paraformaldehyde at RT for 15 min. Green: SP1 stained by SP1 antibody (NBP2-20460) diluted at 1:1000. Red: phalloidin, a cytoskeleton marker, diluted at 1:200.



Immunohistochemistry-Paraffin: SP1 Antibody [NBP2-20460] - SP1 antibody detects SP1 protein at nucleus by immunohistochemical analysis. Sample: Paraffin-embedded human breast carcinoma. SP1 stained by SP1 antibody (NBP2-20460) diluted at 1:500. Antigen Retrieval: Citrate buffer, pH 6.0, 15 min



Publications

Zhang H, Gao Y, Liu B et al. The activation of M (3) muscarinic receptor reverses liver injury via the Sp1/lncRNA Gm2199/miR-212 axis *Acta Biochimica et Biophysica Sinica* 2022-09-25 [PMID: 36111745] (Chemotaxis, Immunoprecipitation, Western Blot, Rat)

Zhang Z, Zhang X, Wang C Et al. Deacetylated Sp1 improves beta glycerophosphate induced calcification in vascular smooth muscle cells *Experimental and Therapeutic Medicine* 2021-08-10 [PMID: 34504597] (IP, Chemotaxis, WB, Rat)



Novus Biologicals USA

10730 E. Briarwood Avenue
Centennial, CO 80112
USA
Phone: 303.730.1950
Toll Free: 1.888.506.6887
Fax: 303.730.1966
nb-customerservice@bio-techne.com

Bio-Techne Canada

21 Canmotor Ave
Toronto, ON M8Z 4E6
Canada
Phone: 905.827.6400
Toll Free: 855.668.8722
Fax: 905.827.6402
canada.inquires@bio-techne.com

Bio-Techne Ltd

19 Barton Lane
Abingdon Science Park
Abingdon, OX14 3NB, United Kingdom
Phone: (44) (0) 1235 529449
Free Phone: 0800 37 34 15
Fax: (44) (0) 1235 533420
info.EMEA@bio-techne.com

General Contact Information

www.novusbio.com
Technical Support: nb-technical@bio-techne.com
Orders: nb-customerservice@bio-techne.com
General: novus@novusbio.com

Products Related to NBP2-20460

HAF008	Goat anti-Rabbit IgG Secondary Antibody [HRP]
NB7160	Goat anti-Rabbit IgG (H+L) Secondary Antibody [HRP]
NBP2-24891	Rabbit IgG Isotype Control
H00006667-Q01-10ug	Recombinant Human SP1 GST (N-Term) Protein

Limitations

This product is for research use only and is not approved for use in humans or in clinical diagnosis. Primary Antibodies are guaranteed for 1 year from date of receipt.

For more information on our 100% guarantee, please visit www.novusbio.com/guarantee

Earn gift cards/discounts by submitting a review: www.novusbio.com/reviews/submit/NBP2-20460

Earn gift cards/discounts by submitting a publication using this product:
www.novusbio.com/publications

