

# Product Datasheet

## Smad3 Antibody - BSA Free

### NBP2-20411

Unit Size: 0.1 ml

Aliquot and store at -20C or -80C. Avoid freeze-thaw cycles.

[www.novusbio.com](http://www.novusbio.com)



[technical@novusbio.com](mailto:technical@novusbio.com)

Protocols, Publications, Related Products, Reviews, Research Tools and Images at:  
[www.novusbio.com/NBP2-20411](http://www.novusbio.com/NBP2-20411)

Updated 9/9/2025 v.20.1

Earn rewards for product  
reviews and publications.

Submit a publication at [www.novusbio.com/publications](http://www.novusbio.com/publications)

Submit a review at [www.novusbio.com/reviews/destination/NBP2-20411](http://www.novusbio.com/reviews/destination/NBP2-20411)



**NBP2-20411**

Smad3 Antibody - BSA Free

**Product Information**

<b>Unit Size</b>	0.1 ml
<b>Concentration</b>	Concentrations vary lot to lot. See vial label for concentration. If unlisted please contact technical services.
<b>Storage</b>	Aliquot and store at -20C or -80C. Avoid freeze-thaw cycles.
<b>Clonality</b>	Polyclonal
<b>Preservative</b>	0.025% Proclin 300
<b>Isotype</b>	IgG
<b>Purity</b>	Antigen Affinity-purified
<b>Buffer</b>	PBS (pH 7), 20% Glycerol
<b>Target Molecular Weight</b>	48 kDa

**Product Description**

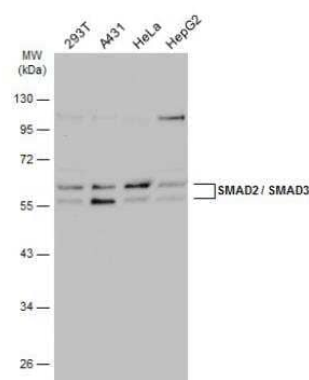
<b>Description</b>	Novus Biologicals Rabbit Smad3 Antibody - BSA Free (NBP2-20411) is a polyclonal antibody validated for use in IHC, WB, Flow, ICC/IF, IP and ChIP. All Novus Biologicals antibodies are covered by our 100% guarantee.
<b>Host</b>	Rabbit
<b>Gene ID</b>	4088
<b>Gene Symbol</b>	SMAD3
<b>Species</b>	Human, Mouse, Rat
<b>Reactivity Notes</b>	Xenopus laevis (95%).
<b>Immunogen</b>	Recombinant protein encompassing a sequence within the center region of human Smad3. The exact sequence is proprietary.

**Product Application Details**

<b>Applications</b>	Western Blot, Immunohistochemistry-Paraffin, Flow Cytometry, Immunocytochemistry/ Immunofluorescence, Immunohistochemistry, Immunoprecipitation, Chromatin Immunoprecipitation (ChIP)
<b>Recommended Dilutions</b>	Western Blot 1:1000-1:20000, Flow Cytometry, Immunohistochemistry 1:100-1:1000, Immunocytochemistry/ Immunofluorescence 1:100-1:1000, Immunoprecipitation 1:1000-1:1000, Immunohistochemistry-Paraffin 1:100-1:1000, Chromatin Immunoprecipitation (ChIP)
<b>Application Notes</b>	ChIP, Flow- assay Assay-dependent dilution

**Images**

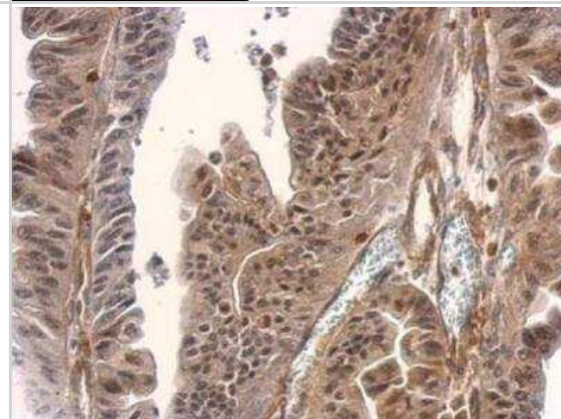
Western Blot: Smad3 Antibody [NBP2-20411] - Various whole cell extracts (30 ug) were separated by 10% SDS-PAGE, and the membrane was blotted with SMAD2 / SMAD3 antibody diluted at 1:5000. The HRP-conjugated anti-rabbit IgG antibody (NBP2-19301) was used to detect the primary antibody.



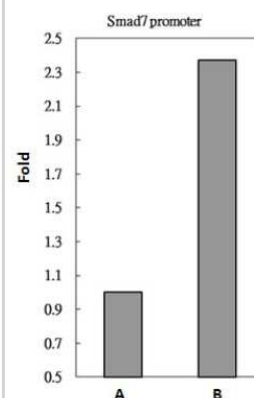
Immunocytochemistry/Immunofluorescence: SMAD3 Antibody [NBP2-20411] - Analysis of paraformaldehyde-fixed HeLa, using antibody at 1:200 dilution.



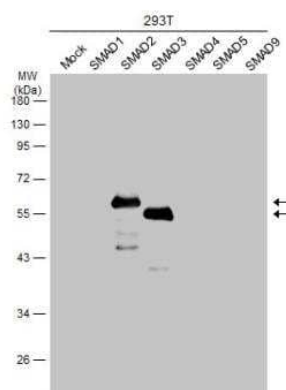
Immunohistochemistry-Paraffin: Smad3 Antibody [NBP2-20411] - Human gastric cancer. SMAD2 / SMAD3 antibody dilution: 1:500. Antigen Retrieval: Trilogy™ (EDTA based, pH 8.0) buffer, 15min



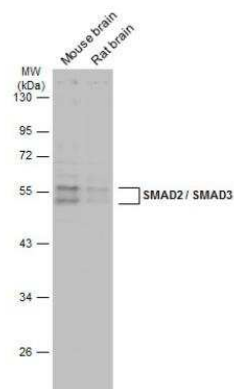
Chromatin Immunoprecipitation: SMAD3 Antibody [NBP2-20411] - Sample: HeLa whole cell lysate/extract A. 5 ug preimmune rabbit IgG B. 5 ug of SMAD3 antibody The precipitated DNA was detected by PCR with primer set targeting to smad7 promoter.



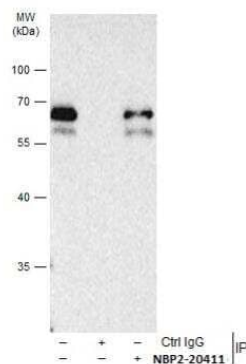
Western Blot: Smad3 Antibody [NBP2-20411] - Non-transfected (-) and transfected (+) 293T whole cell extracts (30 ug) were separated by 10% SDS-PAGE, and the membrane was blotted with SMAD2 / SMAD3 antibody diluted at 1:20000. The HRP-conjugated anti-rabbit IgG antibody (NBP2-19301) was used to detect the primary antibody.



**Western Blot: Smad3 Antibody [NBP2-20411] - Various tissue extracts** (50 ug) were separated by 10% SDS-PAGE, and the membrane was blotted with SMAD2 / SMAD3 antibody diluted at 1:5000. The HRP-conjugated anti-rabbit IgG antibody (NBP2-19301) was used to detect the primary antibody.



**Immunoprecipitation: Smad3 Antibody [NBP2-20411] - HeLa whole cell extracts** using 2 ug of SMAD2 / SMAD3 antibody. Western blot analysis was performed using SMAD2 / SMAD3 antibody. EasyBlot HRP-conjugated anti rabbit IgG antibody was used to detect the primary antibody.





### **Novus Biologicals USA**

10730 E. Briarwood Avenue  
Centennial, CO 80112  
USA  
Phone: 303.730.1950  
Toll Free: 1.888.506.6887  
Fax: 303.730.1966  
nb-customerservice@bio-techne.com

### **Bio-Techne Canada**

21 Canmotor Ave  
Toronto, ON M8Z 4E6  
Canada  
Phone: 905.827.6400  
Toll Free: 855.668.8722  
Fax: 905.827.6402  
canada.inquires@bio-techne.com

### **Bio-Techne Ltd**

19 Barton Lane  
Abingdon Science Park  
Abingdon, OX14 3NB, United Kingdom  
Phone: (44) (0) 1235 529449  
Free Phone: 0800 37 34 15  
Fax: (44) (0) 1235 533420  
info.EMEA@bio-techne.com

### **General Contact Information**

www.novusbio.com  
Technical Support: nb-technical@bio-techne.com  
Orders: nb-customerservice@bio-techne.com  
General: novus@novusbio.com

### **Products Related to NBP2-20411**

---

HAF008	Goat anti-Rabbit IgG Secondary Antibody [HRP]
NB7160	Goat anti-Rabbit IgG (H+L) Secondary Antibody [HRP]
NBP2-24891	Rabbit IgG Isotype Control
NBP1-30284	Recombinant Human Smad3 His Protein

---

### **Limitations**

This product is for research use only and is not approved for use in humans or in clinical diagnosis. Primary Antibodies are guaranteed for 1 year from date of receipt.

For more information on our 100% guarantee, please visit [www.novusbio.com/guarantee](http://www.novusbio.com/guarantee)

Earn gift cards/discounts by submitting a review: [www.novusbio.com/reviews/submit/NBP2-20411](http://www.novusbio.com/reviews/submit/NBP2-20411)

Earn gift cards/discounts by submitting a publication using this product:  
[www.novusbio.com/publications](http://www.novusbio.com/publications)

