

Product Datasheet

Endophilin A1/SH3GL2 Antibody

NBP2-20345

Unit Size: 0.1 ml

Aliquot and store at -20C or -80C. Avoid freeze-thaw cycles.

www.novusbio.com



technical@novusbio.com

Protocols, Publications, Related Products, Reviews, Research Tools and Images at:
www.novusbio.com/NBP2-20345

Updated 7/25/2024 v.20.1

Earn rewards for product
reviews and publications.

Submit a publication at www.novusbio.com/publications

Submit a review at www.novusbio.com/reviews/destination/NBP2-20345



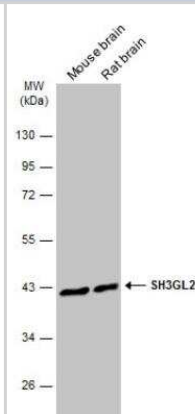
NBP2-20345**Endophilin A1/SH3GL2 Antibody**

Product Information	
Unit Size	0.1 ml
Concentration	Concentrations vary lot to lot. See vial label for concentration. If unlisted please contact technical services.
Storage	Aliquot and store at -20C or -80C. Avoid freeze-thaw cycles.
Clonality	Polyclonal
Preservative	0.01% Thimerosal
Isotype	IgG
Purity	Immunogen affinity purified
Buffer	PBS (pH 7), 20% Glycerol, 1% BSA
Target Molecular Weight	40 kDa
Product Description	
Host	Rabbit
Gene ID	6456
Gene Symbol	SH3GL2
Species	Mouse, Rat
Reactivity Notes	Xenopus laevis (87%), Rabbit (87%).
Immunogen	Recombinant protein encompassing a sequence within the center region of human SH3GL2. The exact sequence is proprietary.
Product Application Details	
Applications	Western Blot, Immunocytochemistry/ Immunofluorescence
Recommended Dilutions	Western Blot 1:5000-1:20000, Immunocytochemistry/ Immunofluorescence 1:100-1:1000

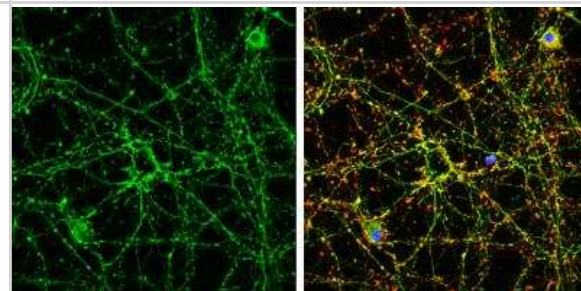


Images

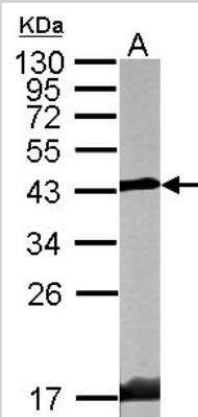
Western Blot: Endophilin A1/SH3GL2 Antibody [NBP2-20345] - Various tissue extracts (50 ug) were separated by 10% SDS-PAGE, and the membrane was blotted with SH3GL2 antibody [N1C1] diluted at 1:10000. The HRP-conjugated anti-rabbit IgG antibody was used to detect the primary antibody.



Immunocytochemistry/Immunofluorescence: Endophilin A1/SH3GL2 Antibody [NBP2-20345] - SH3GL2 antibody [N1C1] detects SH3GL2 protein by immunofluorescent analysis. Sample: DIV9 rat E18 primary cortical neurons cells were fixed in 4% paraformaldehyde at RT for 15 min. Green: SH3GL2 stained by SH3GL2 antibody [N1C1] diluted at 1:500. Red: beta Tubulin 3/ Tuj1, stained by beta Tubulin 3/ Tuj1 antibody [GT1338] diluted at 1:500. Blue: Fluoroshield with DAPI.



Western Blot: Endophilin A1/SH3GL2 Antibody [NBP2-20345] - Sample (20 ug of whole cell lysate) A: mouse brain 10% SDS PAGE gel, diluted at 1:10000.





Novus Biologicals USA

10730 E. Briarwood Avenue
Centennial, CO 80112
USA
Phone: 303.730.1950
Toll Free: 1.888.506.6887
Fax: 303.730.1966
nb-customerservice@bio-techne.com

Bio-Techne Canada

21 Canmotor Ave
Toronto, ON M8Z 4E6
Canada
Phone: 905.827.6400
Toll Free: 855.668.8722
Fax: 905.827.6402
canada.inquires@bio-techne.com

Bio-Techne Ltd

19 Barton Lane
Abingdon Science Park
Abingdon, OX14 3NB, United Kingdom
Phone: (44) (0) 1235 529449
Free Phone: 0800 37 34 15
Fax: (44) (0) 1235 533420
info.EMEA@bio-techne.com

General Contact Information

www.novusbio.com
Technical Support: nb-technical@bio-techne.com
Orders: nb-customerservice@bio-techne.com
General: novus@novusbio.com

Limitations

This product is for research use only and is not approved for use in humans or in clinical diagnosis. Primary Antibodies are guaranteed for 1 year from date of receipt.

For more information on our 100% guarantee, please visit www.novusbio.com/guarantee

Earn gift cards/discounts by submitting a review: www.novusbio.com/reviews/submit/NBP2-20345

Earn gift cards/discounts by submitting a publication using this product:
www.novusbio.com/publications

