

# Product Datasheet

## SETDB1 Antibody NBP2-20322

Unit Size: 0.1 ml

Aliquot and store at -20C or -80C. Avoid freeze-thaw cycles.

[www.novusbio.com](http://www.novusbio.com)



[technical@novusbio.com](mailto:technical@novusbio.com)

**Reviews: 4 Publications: 2**

Protocols, Publications, Related Products, Reviews, Research Tools and Images at:  
[www.novusbio.com/NBP2-20322](http://www.novusbio.com/NBP2-20322)

Updated 6/25/2024 v.20.1

**Earn rewards for product  
reviews and publications.**

Submit a publication at [www.novusbio.com/publications](http://www.novusbio.com/publications)

Submit a review at [www.novusbio.com/reviews/destination/NBP2-20322](http://www.novusbio.com/reviews/destination/NBP2-20322)



**NBP2-20322****SETDB1 Antibody****Product Information**

<b>Unit Size</b>	0.1 ml
<b>Concentration</b>	Concentrations vary lot to lot. See vial label for concentration. If unlisted please contact technical services.
<b>Storage</b>	Aliquot and store at -20C or -80C. Avoid freeze-thaw cycles.
<b>Clonality</b>	Polyclonal
<b>Preservative</b>	0.025% Proclin 300
<b>Isotype</b>	IgG
<b>Purity</b>	Immunogen affinity purified
<b>Buffer</b>	PBS (pH 7), 20% Glycerol
<b>Target Molecular Weight</b>	143 kDa

**Product Description**

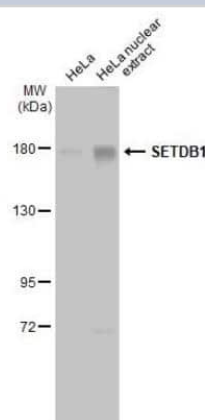
<b>Host</b>	Rabbit
<b>Gene ID</b>	9869
<b>Gene Symbol</b>	SETDB1
<b>Species</b>	Human, Mouse
<b>Immunogen</b>	Recombinant protein encompassing a sequence within the center region of human SETDB1. The exact sequence is proprietary.

**Product Application Details**

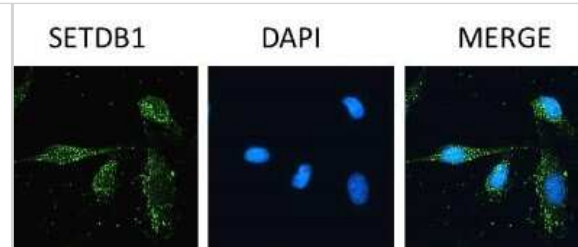
<b>Applications</b>	Western Blot, Immunocytochemistry/ Immunofluorescence, Immunohistochemistry, Immunohistochemistry-Paraffin, Immunoprecipitation, Proximity Ligation Assay, Chromatin Immunoprecipitation (ChIP)
<b>Recommended Dilutions</b>	Western Blot 1:500-1:3000, Immunohistochemistry Assay dependent, Immunocytochemistry/ Immunofluorescence Assay dependent, Immunoprecipitation 1:100-1:500, Immunohistochemistry-Paraffin Assay dependent, Proximity Ligation Assay Reported in scientific literature (PMID:31682228), Chromatin Immunoprecipitation (ChIP) Assay dependent

**Images**

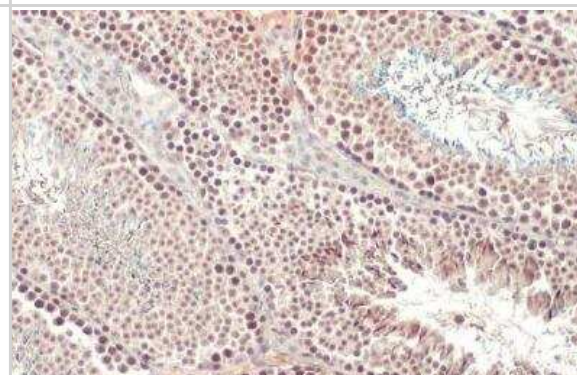
Western Blot: SETDB1 Antibody [NBP2-20322] - HeLa whole cell and nuclear extracts (30 ug) were separated by 5% SDS-PAGE, and the membrane was blotted with SETDB1 antibody [N2C1], Internal diluted at 1:1000. The HRP-conjugated anti-rabbit IgG antibody (NBP2-19301) was used to detect the primary antibody.



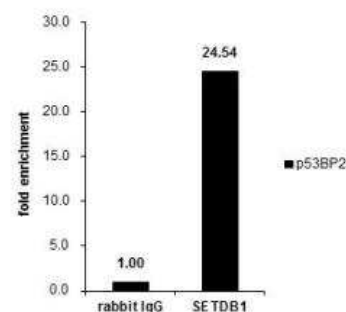
**Immunocytochemistry: SETDB1 Antibody [NBP2-20322] -**  
**Paraformaldehyde Fixed Human Dermal Microvascular Endothelial Cells**  
 were immunostained with 1:100 dilution of pAb. Image submitted by a  
 verified customer review.



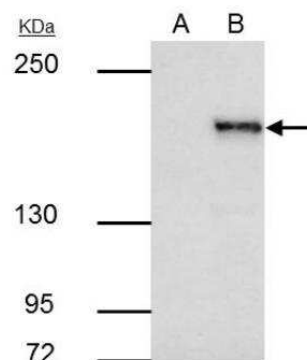
**Immunohistochemistry-Paraffin: SETDB1 Antibody [NBP2-20322] -**  
**Mouse testis.** SETDB1 stained by SETDB1 antibody [N2C1], Internal  
 diluted at 1:500. Antigen Retrieval: Citrate buffer, pH 6.0, 15 min.



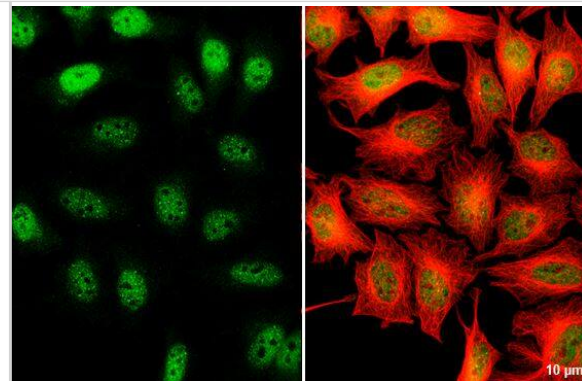
**Chromatin Immunoprecipitation (ChIP): SETDB1 Antibody [NBP2-20322]**  
**- Cross-linked ChIP was performed with HeLa chromatin extract and 5**  
**ug of either control rabbit IgG or anti-SETDB1 antibody.**



**Immunoprecipitation: SETDB1 Antibody [NBP2-20322] - HeLa nuclear**  
**extract A. Control with 4 ug of preimmune Rabbit IgG B.**  
**Immunoprecipitation of SETDB1 protein by 4 ug SETDB1 antibody**  
**[N2C1], Internal 5 % SDS-PAGE The immunoprecipitated SETDB1**  
**protein was detected by SETDB1 antibody [N2C1], Internal diluted at**  
**1:1000. [EasyBlot anti-rabbit IgG was used as a secondary reagent]**



ICC/IF-SETDB1 Antibody [NBP2-20322] - HeLa cells were fixed in 4% paraformaldehyde at RT for 15 min. Green: SETDB1 stained by SETDB1 antibody [N2C1], Internal diluted at 1:500. Red: alpha Tubulin, a cytoskeleton marker, stained by alpha Tubulin antibody [114] diluted at 1:1000. Scale bar= 10um.



## Publications

Lin J, Guo D, Liu H et al. The SETDB1-TRIM28 Complex Suppresses Antitumor Immunity Cancer Immunology Research 2021-12-01 [PMID: 34848497] (IHC)

Roy A, Ghosh A, Kumar B, Chandran B IFI16, a nuclear innate immune DNA sensor, mediates epigenetic silencing of herpesvirus genomes by its association with H3K9 methyltransferases SUV39H1 and GLP Elife 2019-11-04 [PMID: 31682228] (WB, IP, Chemotaxis, ICC/IF, PLA, Human)



### **Novus Biologicals USA**

10730 E. Briarwood Avenue  
Centennial, CO 80112  
USA  
Phone: 303.730.1950  
Toll Free: 1.888.506.6887  
Fax: 303.730.1966  
nb-customerservice@bio-techne.com

### **Bio-Techne Canada**

21 Canmotor Ave  
Toronto, ON M8Z 4E6  
Canada  
Phone: 905.827.6400  
Toll Free: 855.668.8722  
Fax: 905.827.6402  
canada.inquires@bio-techne.com

### **Bio-Techne Ltd**

19 Barton Lane  
Abingdon Science Park  
Abingdon, OX14 3NB, United Kingdom  
Phone: (44) (0) 1235 529449  
Free Phone: 0800 37 34 15  
Fax: (44) (0) 1235 533420  
info.EMEA@bio-techne.com

### **General Contact Information**

[www.novusbio.com](http://www.novusbio.com)  
Technical Support: nb-technical@bio-techne.com  
Orders: nb-customerservice@bio-techne.com  
General: novus@novusbio.com

### **Products Related to NBP2-20322**

---

HAF008	Goat anti-Rabbit IgG Secondary Antibody [HRP]
NB7160	Goat anti-Rabbit IgG (H+L) Secondary Antibody [HRP]
NBP2-24891	Rabbit IgG Isotype Control
H00009869-Q02-10ug	Recombinant Human SETDB1 GST (N-Term) Protein

---

### **Limitations**

This product is for research use only and is not approved for use in humans or in clinical diagnosis. Primary Antibodies are guaranteed for 1 year from date of receipt.

For more information on our 100% guarantee, please visit [www.novusbio.com/guarantee](http://www.novusbio.com/guarantee)

Earn gift cards/discounts by submitting a review: [www.novusbio.com/reviews/submit/NBP2-20322](http://www.novusbio.com/reviews/submit/NBP2-20322)

Earn gift cards/discounts by submitting a publication using this product:  
[www.novusbio.com/publications](http://www.novusbio.com/publications)

