

Product Datasheet

SERCA2 ATPase Antibody

NBP2-20305

Unit Size: 0.1 ml

Aliquot and store at -20C or -80C. Avoid freeze-thaw cycles.

www.novusbio.com



technical@novusbio.com

Publications: 1

Protocols, Publications, Related Products, Reviews, Research Tools and Images at:
www.novusbio.com/NBP2-20305

Updated 3/18/2020 v.20.1

Earn rewards for product
reviews and publications.

Submit a publication at www.novusbio.com/publications

Submit a review at www.novusbio.com/reviews/destination/NBP2-20305



NBP2-20305**SERCA2 ATPase Antibody****Product Information**

Unit Size	0.1 ml
Concentration	Concentrations vary lot to lot. See vial label for concentration. If unlisted please contact technical services.
Storage	Aliquot and store at -20C or -80C. Avoid freeze-thaw cycles.
Clonality	Polyclonal
Preservative	0.01% Thimerosal
Isotype	IgG
Purity	Immunogen affinity purified
Buffer	PBS (pH 7), 20% Glycerol, 1% BSA
Target Molecular Weight	115 kDa

Product Description

Host	Rabbit
Gene ID	488
Gene Symbol	ATP2A2
Species	Human, Mouse, Rat
Reactivity Notes	Expected cross reactivity based on sequence homology: Xenopus laevis (94%).
Immunogen	Recombinant protein encompassing a sequence within the center region of human SERCA2 ATPase. The exact sequence is proprietary.

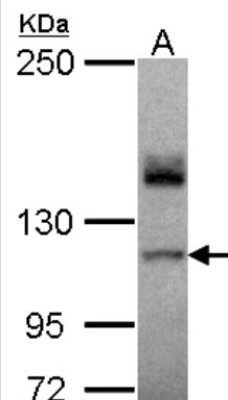
Product Application Details

Applications	Western Blot, Immunohistochemistry, Immunohistochemistry-Paraffin
Recommended Dilutions	Western Blot 1:500-1:3000, Immunohistochemistry 1:100-1:1000, Immunohistochemistry-Paraffin 1:100-1:1000

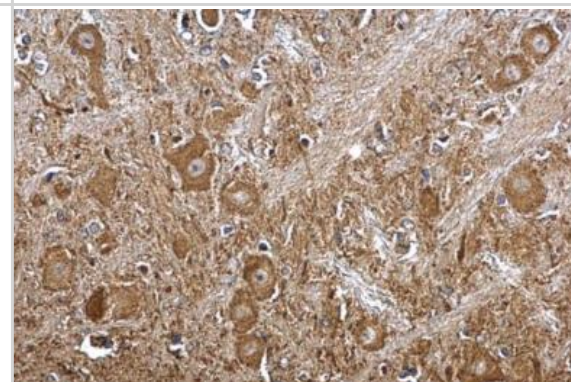


Images

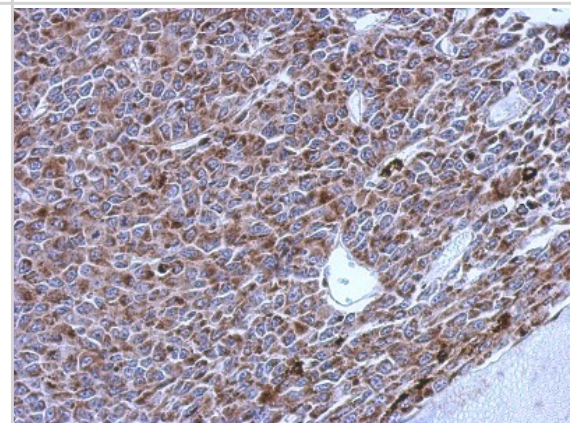
Western Blot: SERCA2 ATPase Antibody [NBP2-20305] - Sample (30 ug of whole cell lysate) A: A431 5% SDS PAGE gel, diluted at 1:2000.



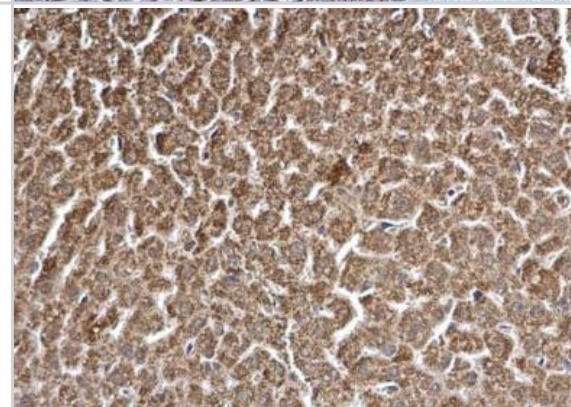
Immunohistochemistry-Paraffin: SERCA2 ATPase Antibody [NBP2-20305] - Paraffin-embedded rat brain stem dilution: 1:500.



Immunohistochemistry-Paraffin: SERCA2 ATPase Antibody [NBP2-20305] - Immunohistochemical analysis of paraffin-embedded BT483 xenograft, using antibody at 1:500 dilution.



Immunohistochemistry-Paraffin: SERCA2 ATPase Antibody [NBP2-20305] - Paraffin-embedded mouse liver dilution: 1:500.



Publications

Shaan A, Carpenter G, Proctor G. Inducible nitric oxide synthase-mediated injury in a mouse model of acute salivary gland dysfunction. Nitric Oxide 2018 Jun 7 [PMID: 29885902] (Mouse)



Novus Biologicals USA

10730 E. Briarwood Avenue
Centennial, CO 80112
USA
Phone: 303.730.1950
Toll Free: 1.888.506.6887
Fax: 303.730.1966
novus@novusbio.com

Novus Biologicals Canada

461 North Service Road West, Unit B37
Oakville, ON L6M 2V5
Canada
Phone: 905.827.6400
Toll Free: 855.668.8722
Fax: 905.827.6402
canada@novusbio.com

Novus Biologicals Europe

19 Barton Lane
Abingdon Science Park
Abingdon, OX14 3NB, United Kingdom
Phone: (44) (0) 1235 529449
Free Phone: 0800 37 34 15
Fax: (44) (0) 1235 533420
info@bio-techne.com

General Contact Information

www.novusbio.com
Technical Support: technical@novusbio.com
Orders: orders@novusbio.com
General: novus@novusbio.com

Limitations

This product is for research use only and is not approved for use in humans or in clinical diagnosis. Primary Antibodies are guaranteed for 1 year from date of receipt.

For more information on our 100% guarantee, please visit www.novusbio.com/guarantee

Earn gift cards/discounts by submitting a review: www.novusbio.com/reviews/submit/NBP2-20305

Earn gift cards/discounts by submitting a publication using this product:
www.novusbio.com/publications

