

# Product Datasheet

## RelB Antibody NBP2-20123

Unit Size: 0.1 ml

Aliquot and store at -20C or -80C. Avoid freeze-thaw cycles.

[www.novusbio.com](http://www.novusbio.com)



[technical@novusbio.com](mailto:technical@novusbio.com)

### Publications: 1

Protocols, Publications, Related Products, Reviews, Research Tools and Images at:  
[www.novusbio.com/NBP2-20123](http://www.novusbio.com/NBP2-20123)

Updated 9/9/2025 v.20.1

Earn rewards for product  
reviews and publications.

Submit a publication at [www.novusbio.com/publications](http://www.novusbio.com/publications)

Submit a review at [www.novusbio.com/reviews/destination/NBP2-20123](http://www.novusbio.com/reviews/destination/NBP2-20123)



**NBP2-20123**

RelB Antibody

**Product Information**

<b>Unit Size</b>	0.1 ml
<b>Concentration</b>	Concentrations vary lot to lot. See vial label for concentration. If unlisted please contact technical services.
<b>Storage</b>	Aliquot and store at -20C or -80C. Avoid freeze-thaw cycles.
<b>Clonality</b>	Polyclonal
<b>Preservative</b>	0.025% Proclin 300
<b>Isotype</b>	IgG
<b>Purity</b>	Antigen Affinity-purified
<b>Buffer</b>	PBS (pH 7), 20% Glycerol, 1% BSA
<b>Target Molecular Weight</b>	62 kDa

**Product Description**

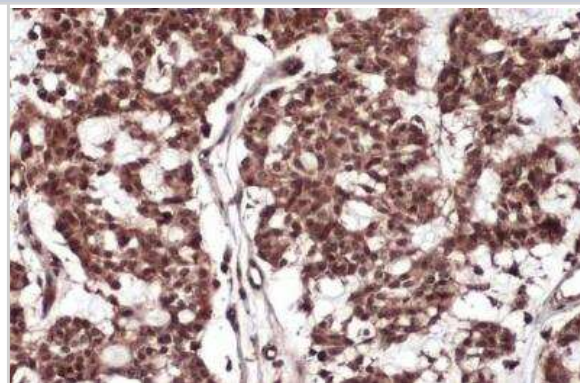
<b>Description</b>	Novus Biologicals Rabbit RelB Antibody (NBP2-20123) is a polyclonal antibody validated for use in IHC, WB, IP and ChIP. Anti-RelB Antibody: Cited in 1 publication. All Novus Biologicals antibodies are covered by our 100% guarantee.
<b>Host</b>	Rabbit
<b>Gene ID</b>	5971
<b>Gene Symbol</b>	RELB
<b>Species</b>	Human, Mouse
<b>Immunogen</b>	Recombinant protein encompassing a sequence within the C-terminus region of human RelB. The exact sequence is proprietary.

**Product Application Details**

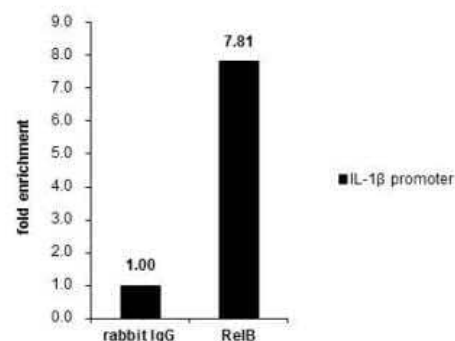
<b>Applications</b>	Western Blot, Immunohistochemistry-Paraffin, Immunohistochemistry, Immunoprecipitation, Chromatin Immunoprecipitation (ChIP)
<b>Recommended Dilutions</b>	Western Blot 1:1000-1:10000, Immunohistochemistry 1:100-1:1000, Immunoprecipitation 1:100-1:500, Immunohistochemistry-Paraffin 1:100-1:1000, Chromatin Immunoprecipitation (ChIP)
<b>Application Notes</b>	Chip assay-Assay dependent

**Images**

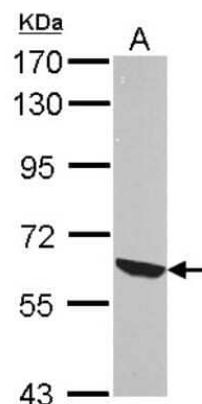
Immunohistochemistry-Paraffin: RelB Antibody [NBP2-20123] - Human breast carcinoma. RelB stained by RelB antibody diluted at 1:500. Antigen Retrieval: Citrate buffer, pH 6.0, 15 min.



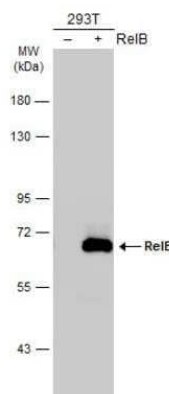
**Chromatin Immunoprecipitation: RelB Antibody [NBP2-20123]** - Cross-linked ChIP was performed with THP-1 chromatin extract treated with LPS (1.0 ug/ml for 3 h) and 5 ug of either normal rabbit IgG or anti-RelB antibody. The precipitated DNA was detected by PCR with primer set targeting to IL-1 beta promoter.



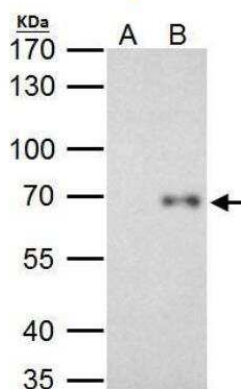
**Western Blot: Rel B Antibody [NBP2-20123]** - Sample (30 ug of whole cell lysate) A: NIH-3T3 7.5% SDS PAGE gel, diluted at 1:10000.



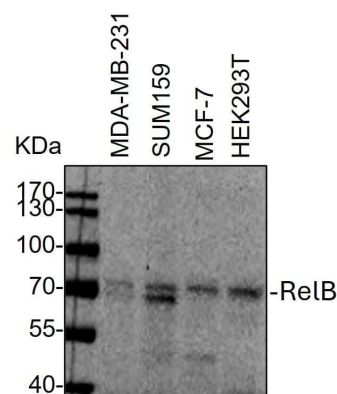
**Western Blot: RelB Antibody [NBP2-20123]** - Non-transfected (-) and transfected (+) 293T whole cell extracts (30 ug) were separated by 7.5% SDS-PAGE, and the membrane was blotted with RelB antibody diluted at 1:5000. The HRP-conjugated anti-rabbit IgG antibody (NBP2-19301) was used to detect the primary antibody.



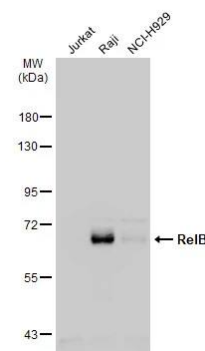
**Immunoprecipitation: RelB Antibody [NBP2-20123]** - HeLa whole cell lysate/extract A. Control with 2 ug of preimmune rabbit IgG B. Immunoprecipitation of RelB protein by 2 ug of RelB antibody 7.5% SDS-PAGE The immunoprecipitated RelB protein was detected by RelB antibody (diluted at 1:1000. EasyBlot anti-rabbit IgG was used as a secondary reagent.



Western Blot: Rabbit Polyclonal RelB Antibody [NBP2-20123] - Whole cell lysates from MDA-MB-231, SUM159, MCF-7 and HEK293T cells were loaded with 50 ug/lane. 10% SDS-PAGE. RRS1 Antibody (NBP2-49323) was used for primary antibody: 1:1000, 4C, overnight. Image from a verified customer review.



Western Blot: RelB Antibody [NBP2-20123] - Various whole cell extracts (30 ug) were separated by 7.5% SDS-PAGE, and the membrane was blotted with RelB antibody (NBP2-20123) diluted at 1:1000. The HRP-conjugated anti-rabbit IgG antibody was used to detect the primary antibody.



## Publications

Samanta D, Huang T, Shah R et al. BIRC2 Expression Impairs Anti-Cancer Immunity and Immunotherapy Efficacy Cell Rep [PMID: 32846130] (WB, Mouse)

Details:

Citation using the PE format of this antibody.



### **Novus Biologicals USA**

10730 E. Briarwood Avenue  
Centennial, CO 80112  
USA  
Phone: 303.730.1950  
Toll Free: 1.888.506.6887  
Fax: 303.730.1966  
nb-customerservice@bio-techne.com

### **Bio-Techne Canada**

21 Canmotor Ave  
Toronto, ON M8Z 4E6  
Canada  
Phone: 905.827.6400  
Toll Free: 855.668.8722  
Fax: 905.827.6402  
canada.inquires@bio-techne.com

### **Bio-Techne Ltd**

19 Barton Lane  
Abingdon Science Park  
Abingdon, OX14 3NB, United Kingdom  
Phone: (44) (0) 1235 529449  
Free Phone: 0800 37 34 15  
Fax: (44) (0) 1235 533420  
info.EMEA@bio-techne.com

### **General Contact Information**

[www.novusbio.com](http://www.novusbio.com)  
Technical Support: nb-technical@bio-techne.com  
Orders: nb-customerservice@bio-techne.com  
General: novus@novusbio.com

### **Products Related to NBP2-20123**

---

HAF008	Goat anti-Rabbit IgG Secondary Antibody [HRP]
NB7160	Goat anti-Rabbit IgG (H+L) Secondary Antibody [HRP]
NBP2-24891	Rabbit IgG Isotype Control
H00005971-P01-10ug	Recombinant Human RelB GST (N-Term) Protein

---

### **Limitations**

This product is for research use only and is not approved for use in humans or in clinical diagnosis. Primary Antibodies are guaranteed for 1 year from date of receipt.

For more information on our 100% guarantee, please visit [www.novusbio.com/guarantee](http://www.novusbio.com/guarantee)

Earn gift cards/discounts by submitting a review: [www.novusbio.com/reviews/submit/NBP2-20123](http://www.novusbio.com/reviews/submit/NBP2-20123)

Earn gift cards/discounts by submitting a publication using this product:  
[www.novusbio.com/publications](http://www.novusbio.com/publications)

