

# Product Datasheet

## Pyruvate Dehydrogenase E1 beta subunit Antibody NBP2-20024

Unit Size: 0.1 ml

Aliquot and store at -20C or -80C. Avoid freeze-thaw cycles.

[www.novusbio.com](http://www.novusbio.com)



[technical@novusbio.com](mailto:technical@novusbio.com)

### Publications: 1

Protocols, Publications, Related Products, Reviews, Research Tools and Images at:  
[www.novusbio.com/NBP2-20024](http://www.novusbio.com/NBP2-20024)

Updated 10/23/2024 v.20.1

Earn rewards for product  
reviews and publications.

Submit a publication at [www.novusbio.com/publications](http://www.novusbio.com/publications)

Submit a review at [www.novusbio.com/reviews/destination/NBP2-20024](http://www.novusbio.com/reviews/destination/NBP2-20024)



**NBP2-20024****Pyruvate Dehydrogenase E1 beta subunit Antibody**

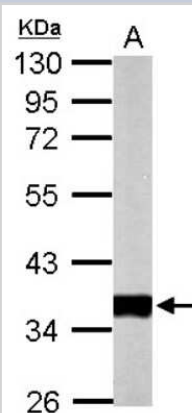
Product Information	
Unit Size	0.1 ml
Concentration	Concentrations vary lot to lot. See vial label for concentration. If unlisted please contact technical services.
Storage	Aliquot and store at -20C or -80C. Avoid freeze-thaw cycles.
Clonality	Polyclonal
Preservative	0.01% Thimerosal
Isotype	IgG
Purity	Antigen Affinity-purified
Buffer	PBS (pH 7), 20% Glycerol, 1% BSA
Target Molecular Weight	39 kDa

Product Description	
Host	Rabbit
Gene ID	5162
Gene Symbol	PDHB
Species	Human, Mouse, Rat
Immunogen	Recombinant protein encompassing a sequence within the center region of human Pyruvate Dehydrogenase E1 beta subunit. The exact sequence is proprietary.

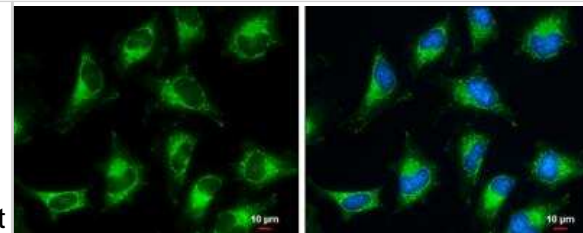
Product Application Details	
Applications	Western Blot, Immunocytochemistry/ Immunofluorescence, Immunohistochemistry, Immunohistochemistry-Paraffin
Recommended Dilutions	Western Blot 1:1000-1:10000, Immunohistochemistry 10 - 1:500, Immunocytochemistry/ Immunofluorescence 1:100-1:1000, Immunohistochemistry-Paraffin 1:100-1:1000

**Images**

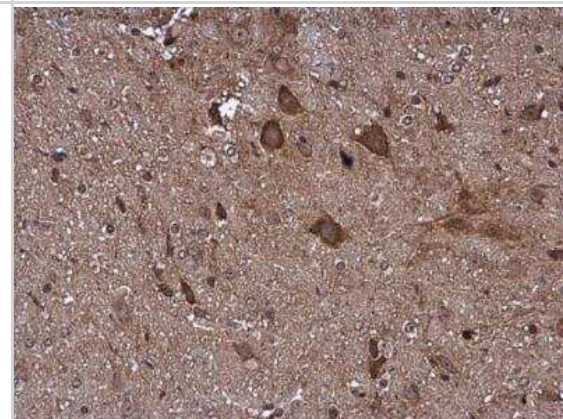
Western Blot: Pyruvate Dehydrogenase E1 beta subunit Antibody [NBP2-20024] - Sample (50 ug of whole cell lysate) A: Mouse Heart, 10% SDS PAGE gel, diluted at 1:10000.



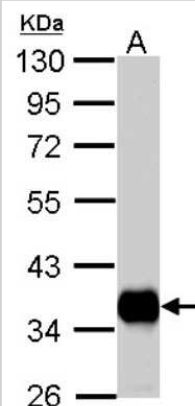
**Immunocytochemistry/Immunofluorescence:** Pyruvate Dehydrogenase E1 beta subunit Antibody [NBP2-20024] - Pyruvate Dehydrogenase E1 beta subunit antibody detects Pyruvate Dehydrogenase E1 beta subunit protein at mitochondria by immunofluorescent analysis. Sample: HeLa cells were fixed in ice-cold MeOH for 5 min. Green: Pyruvate Dehydrogenase E1 beta subunit protein stained by Pyruvate Dehydrogenase E1 beta subunit antibody diluted at 1:500. Blue: Hoechst 33342 staining. Scale bar = 10  $\mu$ m.



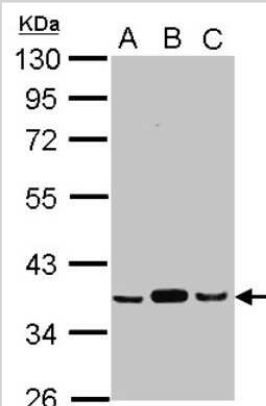
**Immunohistochemistry-Paraffin:** Pyruvate Dehydrogenase E1 beta subunit Antibody [NBP2-20024] - Pyruvate Dehydrogenase E1 beta subunit antibody detects Pyruvate Dehydrogenase E1 beta subunit protein at cytoplasm in mouse brain by immunohistochemical analysis. Sample: Paraffin-embedded mouse brain. Pyruvate Dehydrogenase E1 beta subunit antibody diluted at 1:500. Antigen Retrieval: Citrate buffer, pH 6.0, 15 min



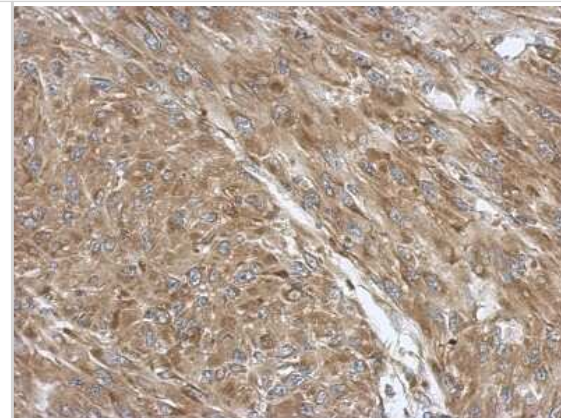
**Western Blot:** Pyruvate Dehydrogenase E1 beta subunit Antibody [NBP2-20024] - A. 50  $\mu$ g rat heart lysate/extract 10 % SDS-PAGE Pyruvate Dehydrogenase E1 beta subunit antibody dilution: 1:5000.



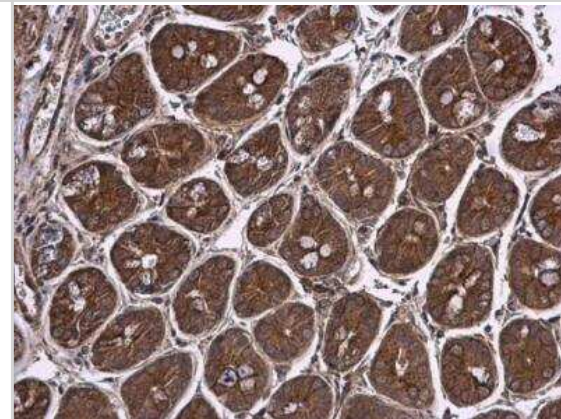
**Western Blot:** Pyruvate Dehydrogenase E1 beta subunit Antibody [NBP2-20024] - Sample (30  $\mu$ g of whole cell lysate) A: A549 B: H1299 C: HCT116 10% SDS PAGE gel, diluted at 1:1000.



Immunohistochemistry-Paraffin: Pyruvate Dehydrogenase E1 beta subunit Antibody [NBP2-20024] - Immunohistochemical analysis of paraffin-embedded U87 xenograft, using antibody at 1:500 dilution.



Immunohistochemistry-Paraffin: Pyruvate Dehydrogenase E1 beta subunit Antibody [NBP2-20024] - Pyruvate Dehydrogenase E1 beta subunit antibody detects Pyruvate Dehydrogenase E1 beta subunit protein at cytoplasm in mouse intestine by immunohistochemical analysis. Sample: Paraffin-embedded mouse intestine. Pyruvate Dehydrogenase E1 beta subunit antibody diluted at 1:500. Antigen Retrieval: Citrate buffer, pH 6.0, 15 min



## Publications

Grimm M, Calgeer B, Teriete P et al. Targeting thiamine-dependent enzymes for metabolic therapies in oral squamous cell carcinoma? Clin Transl Oncol. 2015-07-16 [PMID: 26179749] (IHC-P, Human)



### **Novus Biologicals USA**

10730 E. Briarwood Avenue  
Centennial, CO 80112  
USA  
Phone: 303.730.1950  
Toll Free: 1.888.506.6887  
Fax: 303.730.1966  
nb-customerservice@bio-techne.com

### **Bio-Techne Canada**

21 Canmotor Ave  
Toronto, ON M8Z 4E6  
Canada  
Phone: 905.827.6400  
Toll Free: 855.668.8722  
Fax: 905.827.6402  
canada.inquires@bio-techne.com

### **Bio-Techne Ltd**

19 Barton Lane  
Abingdon Science Park  
Abingdon, OX14 3NB, United Kingdom  
Phone: (44) (0) 1235 529449  
Free Phone: 0800 37 34 15  
Fax: (44) (0) 1235 533420  
info.EMEA@bio-techne.com

### **General Contact Information**

www.novusbio.com  
Technical Support: nb-technical@bio-techne.com  
Orders: nb-customerservice@bio-techne.com  
General: novus@novusbio.com

### **Products Related to NBP2-20024**

---

HAF008	Goat anti-Rabbit IgG Secondary Antibody [HRP]
NB7160	Goat anti-Rabbit IgG (H+L) Secondary Antibody [HRP]
NBP2-24891	Rabbit IgG Isotype Control
H00005162-P01-10ug	Recombinant Human Pyruvate Dehydrogenase E1 beta subunit GST (N-Term) Protein

---

### **Limitations**

This product is for research use only and is not approved for use in humans or in clinical diagnosis. Primary Antibodies are guaranteed for 1 year from date of receipt.

For more information on our 100% guarantee, please visit [www.novusbio.com/guarantee](http://www.novusbio.com/guarantee)

Earn gift cards/discounts by submitting a review: [www.novusbio.com/reviews/submit/NBP2-20024](http://www.novusbio.com/reviews/submit/NBP2-20024)

Earn gift cards/discounts by submitting a publication using this product:  
[www.novusbio.com/publications](http://www.novusbio.com/publications)

