

# Product Datasheet

## Pax6 Antibody NBP2-19711

Unit Size: 0.1 ml

Aliquot and store at -20C or -80C. Avoid freeze-thaw cycles.

[www.novusbio.com](http://www.novusbio.com)



[technical@novusbio.com](mailto:technical@novusbio.com)

### Publications: 3

Protocols, Publications, Related Products, Reviews, Research Tools and Images at:  
[www.novusbio.com/NBP2-19711](http://www.novusbio.com/NBP2-19711)

Updated 10/23/2024 v.20.1

Earn rewards for product  
reviews and publications.

Submit a publication at [www.novusbio.com/publications](http://www.novusbio.com/publications)

Submit a review at [www.novusbio.com/reviews/destination/NBP2-19711](http://www.novusbio.com/reviews/destination/NBP2-19711)



**NBP2-19711****Pax6 Antibody****Product Information**

<b>Unit Size</b>	0.1 ml
<b>Concentration</b>	Concentrations vary lot to lot. See vial label for concentration. If unlisted please contact technical services.
<b>Storage</b>	Aliquot and store at -20C or -80C. Avoid freeze-thaw cycles.
<b>Clonality</b>	Polyclonal
<b>Preservative</b>	0.025% Proclin 300
<b>Isotype</b>	IgG
<b>Purity</b>	Antigen Affinity-purified
<b>Buffer</b>	PBS (pH 7), 20% Glycerol
<b>Target Molecular Weight</b>	47 kDa

**Product Description**

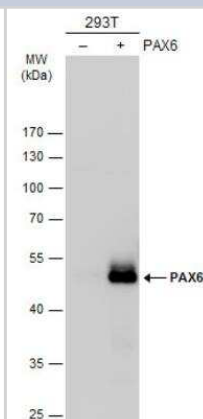
<b>Host</b>	Rabbit
<b>Gene ID</b>	5080
<b>Gene Symbol</b>	PAX6
<b>Species</b>	Human, Mouse, Rat
<b>Reactivity Notes</b>	Xenopus laevis (94%).
<b>Marker</b>	Neural Marker
<b>Immunogen</b>	Recombinant protein encompassing a sequence within the center region of human Pax6. The exact sequence is proprietary.

**Product Application Details**

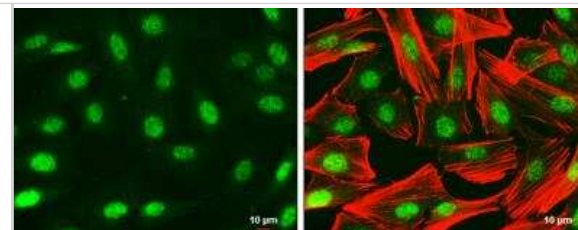
<b>Applications</b>	Western Blot, Immunocytochemistry/ Immunofluorescence, Immunohistochemistry, Immunohistochemistry-Frozen, Immunohistochemistry-Paraffin, Immunoprecipitation
<b>Recommended Dilutions</b>	Western Blot 1:500-1:3000, Immunohistochemistry 1:100-1:1000, Immunocytochemistry/ Immunofluorescence 1:100-1:1000, Immunoprecipitation 1:1000-1:1000, Immunohistochemistry-Paraffin 1:100-1:1000, Immunohistochemistry-Frozen 1:100-1:1000

**Images**

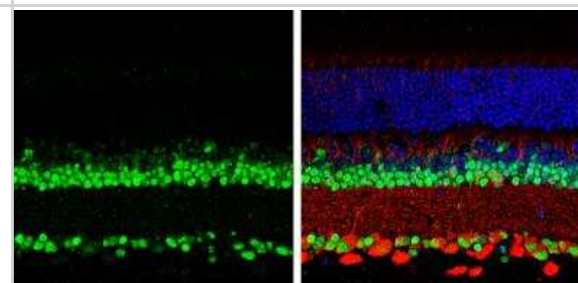
Western Blot: Pax6 Antibody [NBP2-19711] - Non-transfected (-) and transfected (+) 293T whole cell extracts (30 ug) were separated by 10% SDS-PAGE, and the membrane was blotted with PAX6 antibody diluted at 1:1000. The HRP-conjugated anti-rabbit IgG antibody (NBP2-19301) was used to detect the primary antibody.



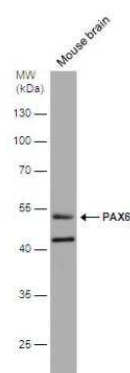
**Immunocytochemistry/Immunofluorescence: Pax6 Antibody [NBP2-19711]** - SK-N-SH cells were fixed in 4% paraformaldehyde at RT for 15 min. Green: PAX6 protein stained by PAX6 antibody diluted at 1:500. Red: Phalloidin, a cytoskeleton marker, diluted at 1:50. Scale bar = 10  $\mu$ m.



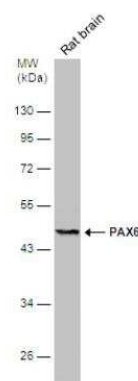
**Immunohistochemistry-Paraffin: Pax6 Antibody [NBP2-19711]** - Mouse retina. Green: PAX6 protein stained by PAX6 antibody diluted at 1:250. Red: beta Tubulin 3/ Tuj1, stained by beta Tubulin 3/ Tuj1 antibody [1338] diluted at 1:500. Blue: Fluoroshield with DAPI. Antigen Retrieval: Citrate buffer, pH 6.0, 15 min



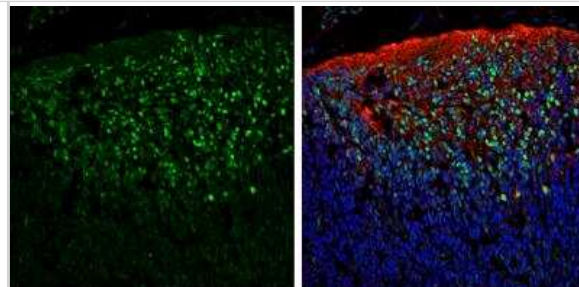
**Western Blot: Pax6 Antibody [NBP2-19711]** - Mouse tissue extract (50  $\mu$ g) was separated by 10% SDS-PAGE, and the membrane was blotted with PAX6 antibody diluted at 1:1000. The HRP-conjugated anti-rabbit IgG antibody (NBP2-19301) was used to detect the primary antibody.



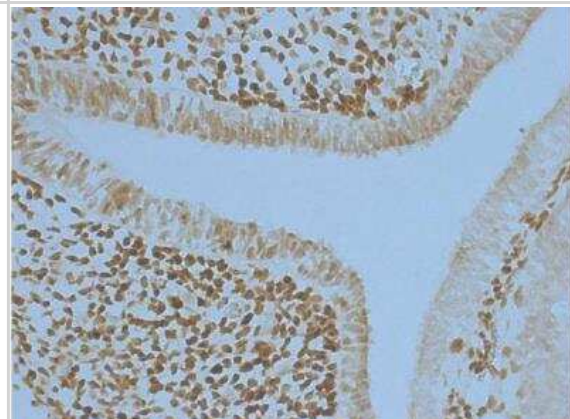
**Western Blot: Pax6 Antibody [NBP2-19711]** - Rat tissue extract (50  $\mu$ g) was separated by 10% SDS-PAGE, and the membrane was blotted with PAX6 antibody diluted at 1:500. The HRP-conjugated anti-rabbit IgG antibody (NBP2-19301) was used to detect the primary antibody.



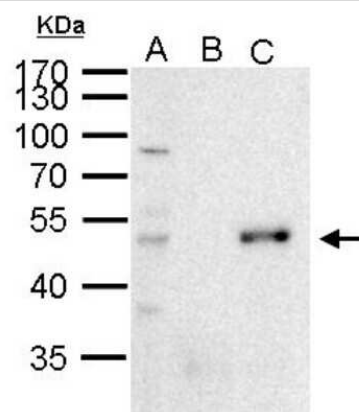
Immunohistochemistry-Frozen: Pax6 Antibody [NBP2-19711] - Frozen sectioned E13.5 Rat brain. Green: PAX6 protein stained by PAX6 antibody diluted at 1:250. Red: beta Tubulin 3/ TUJ1, a mature neuron marker, stained by beta Tubulin 3/ TUJ1 antibody [11710] (NBP2-43559) diluted at 1:500. Blue: Fluoroshield with DAPI.



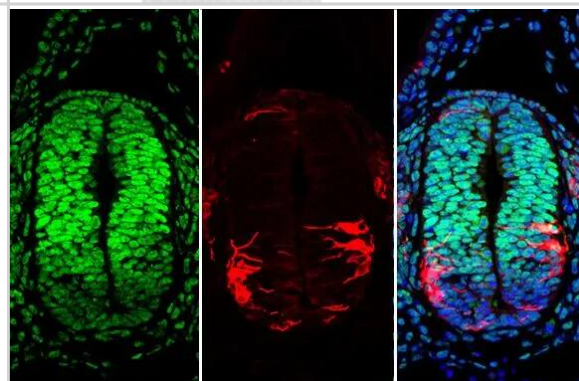
Immunohistochemistry-Frozen: Pax6 Antibody [NBP2-19711] - Frozen section of embryonic mouse brain (mE12.5). PAX6 antibody diluted at 1:250.



Immunoprecipitation: PAX6 Antibody [NBP2-19711] - Sample: 1000 ug 293T whole cell lysate/extract A. 50 ug 293T whole cell lysate/extract B. Control with 2 ug of preimmune rabbit IgG C. Immunoprecipitation of PAX6 protein by 2 ug of PAX6 antibody 10% SDS-PAGE The immunoprecipitated PAX6 protein was detected by PAX6 antibody diluted at 1:1000. anti-rabbit IgG was used as a secondary reagent.

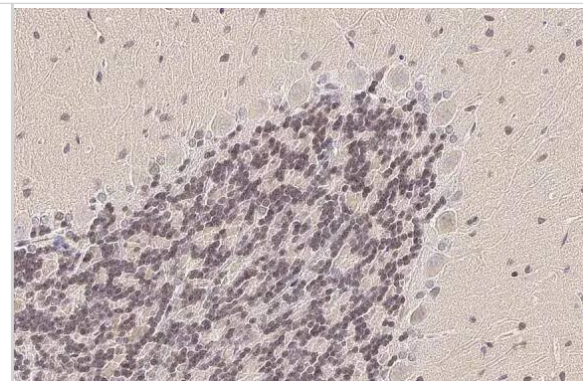


Immunohistochemistry-Paraffin: Pax6 Antibody [NBP2-19711] - Pax6 antibody detects Pax6 protein at nucleus by immunohistochemical analysis. Sample: Paraffin-embedded mouse E10.5 embryo. Green: Pax6 stained by Pax6 antibody (NBP2-19711) diluted at 1:250. Red: beta Tubulin 3/ Tuj1, a cytoskeleton marker, stained by beta Tubulin 3/ Tuj1 antibody [GT11710] diluted at 1:500. Blue: Fluoroshield with DAPI. Antigen Retrieval: Citrate buffer, pH 6.0, 15 min

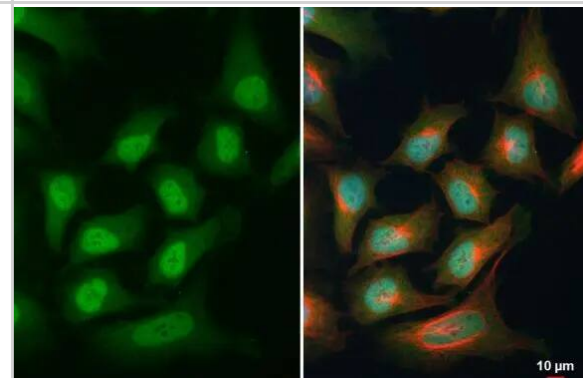




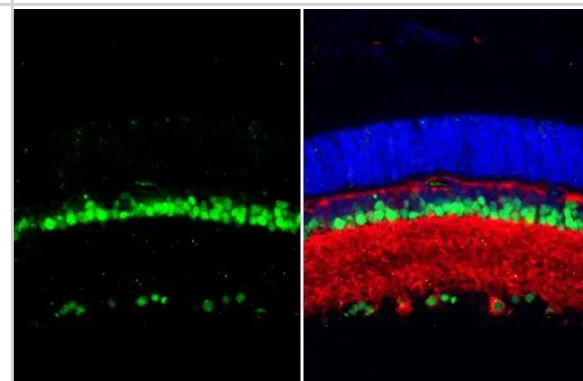
**Immunohistochemistry-Paraffin: Pax6 Antibody [NBP2-19711]** - Pax6 antibody detects Pax6 protein at nucleus by immunohistochemical analysis. Sample: Paraffin-embedded rat cerebellum. Pax6 stained by Pax6 antibody (NBP2-19711) diluted at 1:500. Antigen Retrieval: Citrate buffer, pH 6.0, 15 min



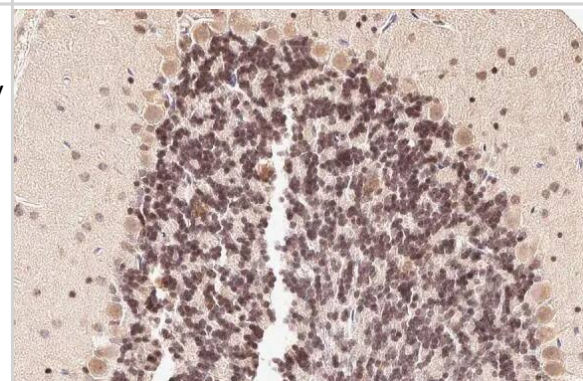
**Immunocytochemistry/ Immunofluorescence: Pax6 Antibody [NBP2-19711]** - Pax6 antibody detects Pax6 protein at cytoplasm and nucleus by immunofluorescent analysis. Sample: HeLa cells were fixed in 4% paraformaldehyde at RT for 15 min. Green: Pax6 stained by Pax6 antibody (NBP2-19711) diluted at 1:500. Red: alpha Tubulin, a cytoskeleton marker, stained by alpha Tubulin antibody [GT114] diluted at 1:1000. Blue: Fluoroshield with DAPI .



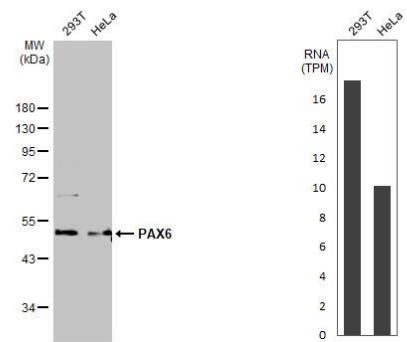
**Immunohistochemistry-Paraffin: Pax6 Antibody [NBP2-19711]** - Pax6 antibody detects Pax6 protein at nucleus by immunohistochemical analysis. Sample: Paraffin-embedded rat eye. Green: Pax6 stained by Pax6 antibody (NBP2-19711) diluted at 1:250. Red: beta Tubulin 3/ Tuj1, a neural marker, stained by beta Tubulin 3/ Tuj1 antibody [GT11710] diluted at 1:500. Blue: Fluoroshield with DAPI . Antigen Retrieval: Citrate buffer, pH 6.0, 15 min



**Immunohistochemistry-Paraffin: Pax6 Antibody [NBP2-19711]** - Pax6 antibody detects Pax6 protein at nucleus by immunohistochemical analysis. Sample: Paraffin-embedded mouse cerebellum. Pax6 stained by Pax6 antibody (NBP2-19711) diluted at 1:500. Antigen Retrieval: Citrate buffer, pH 6.0, 15 min



Western Blot: Pax6 Antibody [NBP2-19711] - Various whole cell extracts (30 ug) were separated by 10% SDS-PAGE, and the membrane was blotted with PAX6 antibody diluted at 1:1000. The HRP-conjugated anti-rabbit IgG antibody was used to detect the primary antibody. Corresponding RNA expression data for the same cell lines are based on Human Protein Atlas program.



## Publications

Larrigan S, Joshi SV, Mattar P Divergent phenotypes in constitutive versus conditional mutant mouse models of Sifrim-Hitz-Weiss syndrome Human molecular genetics 2023-09-21 [PMID: 37738575]

Larrigan S, Joshi S, Mattar P Divergent phenotypes in germline versus conditional mutant mouse models of Sifrim-Hitz-Weiss Syndrome bioRxiv 2023-02-16 (IHC-Fr, Mouse)

Wen Y, Jin S. Production of neural stem cells from human pluripotent stem cells J. Biotechnol. 2014-08-20 [PMID: 25150215]



### **Novus Biologicals USA**

10730 E. Briarwood Avenue  
Centennial, CO 80112  
USA  
Phone: 303.730.1950  
Toll Free: 1.888.506.6887  
Fax: 303.730.1966  
nb-customerservice@bio-techne.com

### **Bio-Techne Canada**

21 Canmotor Ave  
Toronto, ON M8Z 4E6  
Canada  
Phone: 905.827.6400  
Toll Free: 855.668.8722  
Fax: 905.827.6402  
canada.inquires@bio-techne.com

### **Bio-Techne Ltd**

19 Barton Lane  
Abingdon Science Park  
Abingdon, OX14 3NB, United Kingdom  
Phone: (44) (0) 1235 529449  
Free Phone: 0800 37 34 15  
Fax: (44) (0) 1235 533420  
info.EMEA@bio-techne.com

### **General Contact Information**

www.novusbio.com  
Technical Support: nb-technical@bio-techne.com  
Orders: nb-customerservice@bio-techne.com  
General: novus@novusbio.com

### **Products Related to NBP2-19711**

---

HAF008	Goat anti-Rabbit IgG Secondary Antibody [HRP]
NB7160	Goat anti-Rabbit IgG (H+L) Secondary Antibody [HRP]
NBP2-24891	Rabbit IgG Isotype Control
H00005080-P01-10ug	Recombinant Human Pax6 GST (N-Term) Protein

---

### **Limitations**

This product is for research use only and is not approved for use in humans or in clinical diagnosis. Primary Antibodies are guaranteed for 1 year from date of receipt.

For more information on our 100% guarantee, please visit [www.novusbio.com/guarantee](http://www.novusbio.com/guarantee)

Earn gift cards/discounts by submitting a review: [www.novusbio.com/reviews/submit/NBP2-19711](http://www.novusbio.com/reviews/submit/NBP2-19711)

Earn gift cards/discounts by submitting a publication using this product:  
[www.novusbio.com/publications](http://www.novusbio.com/publications)

