

Product Datasheet

NDUFAB1 Antibody NBP2-19502

Unit Size: 0.1 ml

Aliquot and store at -20C or -80C. Avoid freeze-thaw cycles.

www.novusbio.com



technical@novusbio.com

Protocols, Publications, Related Products, Reviews, Research Tools and Images at:
www.novusbio.com/NBP2-19502

Updated 11/30/2022 v.20.1

Earn rewards for product
reviews and publications.

Submit a publication at www.novusbio.com/publications

Submit a review at www.novusbio.com/reviews/destination/NBP2-19502



NBP2-19502**NDUFAB1 Antibody****Product Information**

Unit Size	0.1 ml
Concentration	Concentrations vary lot to lot. See vial label for concentration. If unlisted please contact technical services.
Storage	Aliquot and store at -20C or -80C. Avoid freeze-thaw cycles.
Clonality	Polyclonal
Preservative	0.01% Thimerosal
Isotype	IgG
Purity	Immunogen affinity purified
Buffer	PBS (pH 7), 20% Glycerol, 1% BSA
Target Molecular Weight	17 kDa

Product Description

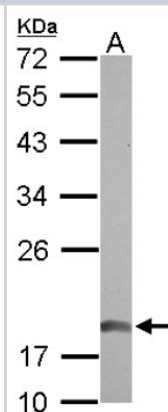
Host	Rabbit
Gene ID	4706
Gene Symbol	NDUFAB1
Species	Human, Mouse, Rat
Immunogen	Recombinant protein encompassing a sequence within the center region of human NDUFAB1. The exact sequence is proprietary.

Product Application Details

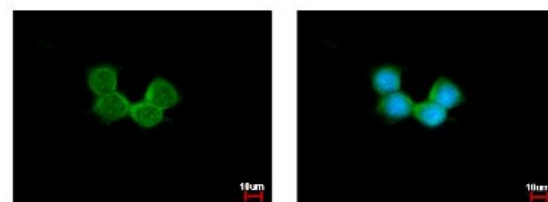
Applications	Western Blot, Immunocytochemistry/Immunofluorescence, Immunohistochemistry, Immunohistochemistry-Paraffin
Recommended Dilutions	Western Blot 1:1000-1:10000, Immunohistochemistry 10 - 1:500, Immunocytochemistry/Immunofluorescence 1:100-1:1000, Immunohistochemistry-Paraffin 1:100-1:1000

Images

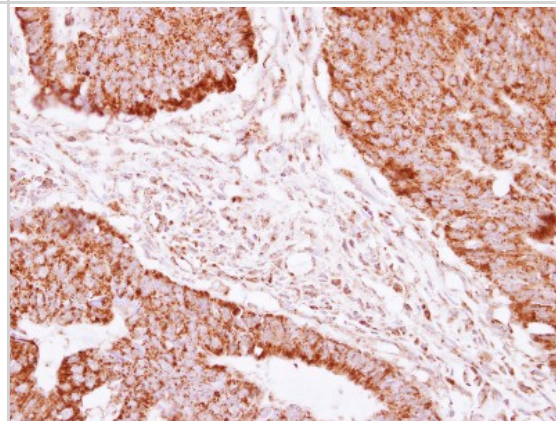
Western Blot: NDUFAB1 Antibody [NBP2-19502] - Sample (30 ug of whole cell lysate) A: 293T 12% SDS PAGE gel, diluted at 1:1000.



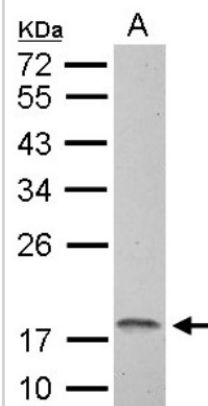
Immunocytochemistry/Immunofluorescence: NDUFAB1 Antibody [NBP2-19502] - Sample: A431 cells were fixed in iced-cold MeOH for 5 min. Green: NDUFAB1 protein stained by NDUFAB1 antibody diluted at 1:500. Blue: Hoechst 33342 staining.



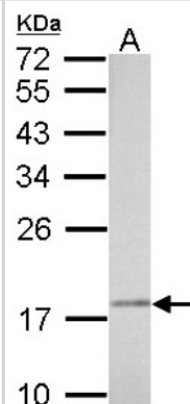
Immunohistochemistry-Paraffin: NDUFAB1 Antibody [NBP2-19502] - Immunohistochemical analysis of paraffin-embedded Colon ca, using antibody at 1:250 dilution.



Western Blot: NDUFAB1 Antibody [NBP2-19502] - 30 ug C8D30 whole cell lysate/extract 12 % SDS-PAGE NDUFAB1 antibody dilution: 1:1000.



Western Blot: NDUFAB1 Antibody [NBP2-19502] - 30 ug PC-12 whole cell lysate/extract 12 % SDS-PAGE NDUFAB1 antibody dilution: 1:5000.





Novus Biologicals USA

10730 E. Briarwood Avenue
Centennial, CO 80112
USA

Phone: 303.730.1950
Toll Free: 1.888.506.6887
Fax: 303.730.1966
novus@novusbio.com

Bio-Techne Canada

21 Canmotor Ave
Toronto, ON M8Z 4E6
Canada

Phone: 905.827.6400
Toll Free: 855.668.8722
Fax: 905.827.6402
canada.inquires@bio-techne.com

Bio-Techne Ltd

19 Barton Lane
Abingdon Science Park
Abingdon, OX14 3NB, United Kingdom
Phone: (44) (0) 1235 529449
Free Phone: 0800 37 34 15
Fax: (44) (0) 1235 533420
info.EMEA@bio-techne.com

General Contact Information

www.novusbio.com
Technical Support: technical@novusbio.com
Orders: orders@novusbio.com
General: novus@novusbio.com

Limitations

This product is for research use only and is not approved for use in humans or in clinical diagnosis. Primary Antibodies are guaranteed for 1 year from date of receipt.

For more information on our 100% guarantee, please visit www.novusbio.com/guarantee

Earn gift cards/discounts by submitting a review: www.novusbio.com/reviews/submit/NBP2-19502

Earn gift cards/discounts by submitting a publication using this product:
www.novusbio.com/publications

