

Product Datasheet

Lamin A + C Antibody NBP2-19323

Unit Size: 0.1 ml

Aliquot and store at -20C or -80C. Avoid freeze-thaw cycles.

www.novusbio.com



technical@novusbio.com

Protocols, Publications, Related Products, Reviews, Research Tools and Images at:
www.novusbio.com/NBP2-19323

Updated 10/23/2024 v.20.1

Earn rewards for product
reviews and publications.

Submit a publication at www.novusbio.com/publications

Submit a review at www.novusbio.com/reviews/destination/NBP2-19323



NBP2-19323**Lamin A + C Antibody****Product Information**

Unit Size	0.1 ml
Concentration	Concentrations vary lot to lot. See vial label for concentration. If unlisted please contact technical services.
Storage	Aliquot and store at -20C or -80C. Avoid freeze-thaw cycles.
Clonality	Polyclonal
Preservative	0.01% Thimerosal
Isotype	IgG
Purity	Antigen Affinity-purified
Buffer	0.1M Tris (pH 7), 0.1M Glycine, 20% Glycerol
Target Molecular Weight	74 kDa

Product Description

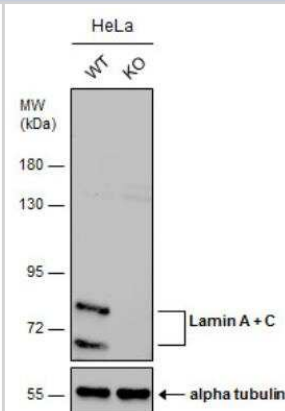
Host	Rabbit
Gene ID	4000
Gene Symbol	LMNA
Species	Human, Mouse
Reactivity Notes	Chimpanzee (99%), Rat (89%).
Marker	Nuclear Envelope Marker
Immunogen	Recombinant protein encompassing a sequence within the center region of human Lamin A + C. The exact sequence is proprietary.

Product Application Details

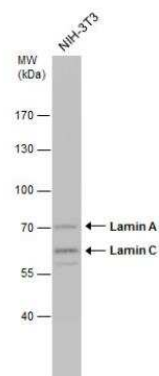
Applications	Western Blot, Immunocytochemistry/ Immunofluorescence, Immunohistochemistry, Immunohistochemistry-Paraffin, Immunoprecipitation, Knockout Validated
Recommended Dilutions	Western Blot 1:500-1:10000, Immunohistochemistry 1:100-1:1000, Immunocytochemistry/ Immunofluorescence 1:100-1:1000, Immunoprecipitation 1:66-1:500, Immunohistochemistry-Paraffin 1:100-1:1000, Knockout Validated

Images

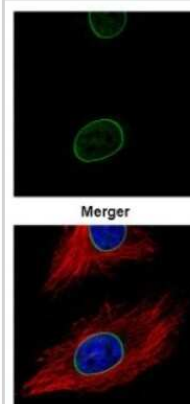
Knockout Validated: Lamin A + C Antibody [NBP2-19323] - Wild-type (WT) and Lamin A + C knockout (KO) HeLa cell extracts (30 ug) were separated by 7.5% SDS-PAGE, and the membrane was blotted with Lamin A + C antibody. HRP-conjugated anti-rabbit IgG antibody was used to detect the primary antibody, and the signal was developed with Trident ECL plus-Enhanced.



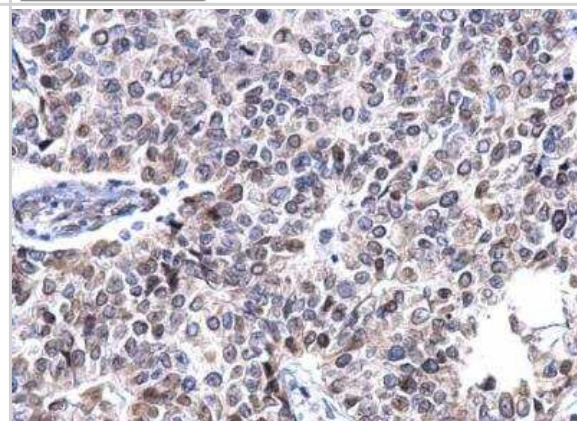
Western Blot: Lamin A + C Antibody [NBP2-19323] - Whole cell extract (30 ug) was separated by 7.5% SDS-PAGE, and the membrane was blotted with Lamin A + C antibody diluted at 1:1000.



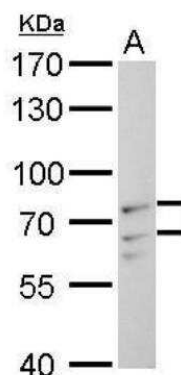
Immunocytochemistry/Immunofluorescence: Lamin A + C Antibody [NBP2-19323] - Confocal immunofluorescence analysis of methanol-fixed HeLa, using Lamin A/C antibody (Green) at 1:500 dilution. Alpha-tubulin filaments are labeled with Alpha-tubulin antibody (Red) at 1:500. The top panel shows the Lamin A/C (green) and the bottom panel shows the merged image with Alpha-tubulin (red) and DAPI (blue) nuclear staining.



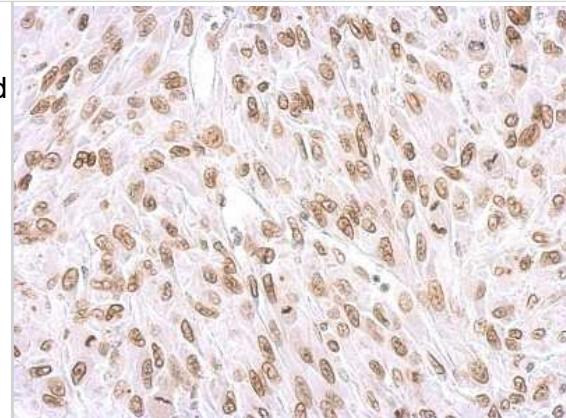
Immunohistochemistry-Paraffin: Lamin A + C Antibody [NBP2-19323] - Paraffin-embedded human breast carcinoma. Lamin A + C antibody dilution: 1:500. The image shows brown staining for Lamin A/C in the nuclei of carcinoma cells.



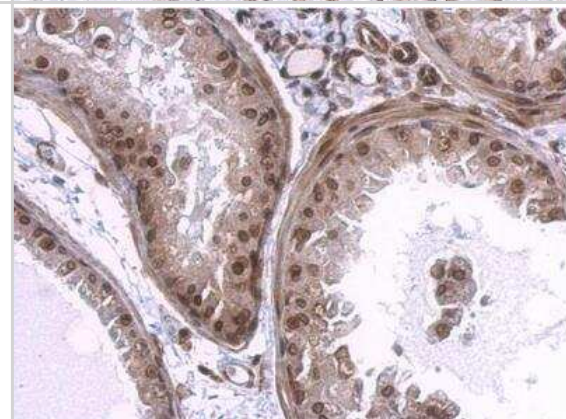
Western Blot: Lamin A + C Antibody [NBP2-19323] - A. 30 ug C2C12 whole cell lysate/extract 7.5 % SDS-PAGE Lamin A + C antibody dilution: 1:1000



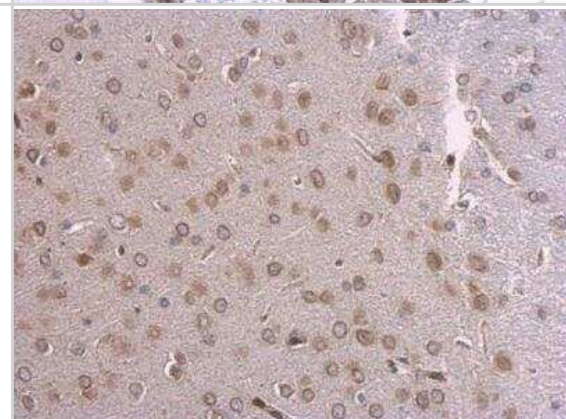
Immunohistochemistry-Paraffin: Lamin A + C Antibody [NBP2-19323] - Lamin A/C antibody detects LMNA protein at membrane on U87 xenograft by immunohistochemical analysis. Sample: Paraffin-embedded U87 xenograft. Lamin A/C antibody dilution: 1:500.



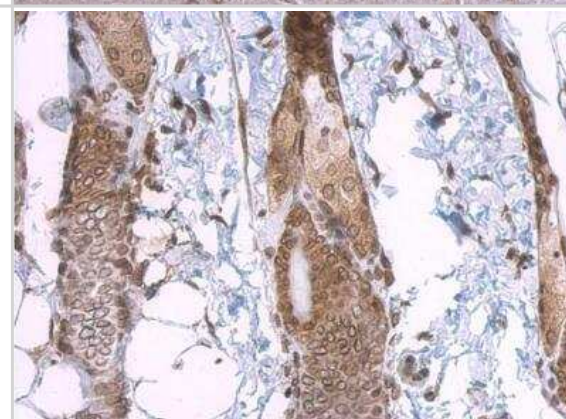
Immunohistochemistry-Paraffin: Lamin A + C Antibody [NBP2-19323] - Paraffin-embedded mouse prostate. Lamin A + C antibody dilution: 1:500.



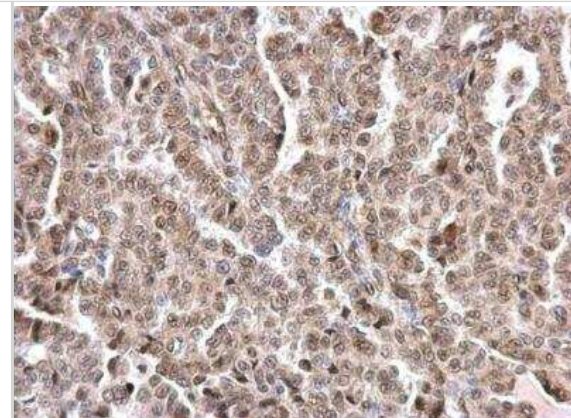
Immunohistochemistry-Paraffin: Lamin A + C Antibody [NBP2-19323] - Paraffin-embedded mouse fore brain. Lamin A + C antibody dilution: 1:500.



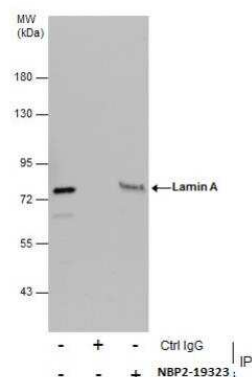
Immunohistochemistry-Paraffin: Lamin A + C Antibody [NBP2-19323] - Paraffin-embedded mouse skin. Lamin A + C antibody dilution: 1:500.



Immunohistochemistry-Paraffin: Lamin A + C Antibody [NBP2-19323] - Paraffin-embedded human endometrial carcinoma. Lamin A + C antibody dilution: 1:500.



Immunoprecipitation: Lamin A + C Antibody [NBP2-19323] - Immunoprecipitation of Lamin A + C protein from HeLa whole cell extracts using 5 ug of Lamin A + C antibody. Western blot analysis was performed using Lamin A + C antibody. EasyBlot anti-Rabbit IgG was used as a secondary reagent.





Novus Biologicals USA

10730 E. Briarwood Avenue
Centennial, CO 80112
USA
Phone: 303.730.1950
Toll Free: 1.888.506.6887
Fax: 303.730.1966
nb-customerservice@bio-techne.com

Bio-Techne Canada

21 Canmotor Ave
Toronto, ON M8Z 4E6
Canada
Phone: 905.827.6400
Toll Free: 855.668.8722
Fax: 905.827.6402
canada.inquires@bio-techne.com

Bio-Techne Ltd

19 Barton Lane
Abingdon Science Park
Abingdon, OX14 3NB, United Kingdom
Phone: (44) (0) 1235 529449
Free Phone: 0800 37 34 15
Fax: (44) (0) 1235 533420
info.EMEA@bio-techne.com

General Contact Information

www.novusbio.com
Technical Support: nb-technical@bio-techne.com
Orders: nb-customerservice@bio-techne.com
General: novus@novusbio.com

Products Related to NBP2-19323

HAF008	Goat anti-Rabbit IgG Secondary Antibody [HRP]
NB7160	Goat anti-Rabbit IgG (H+L) Secondary Antibody [HRP]
NBP2-24891	Rabbit IgG Isotype Control
H00004000-P01-2ug	Recombinant Human Lamin A + C GST (N-Term) Protein

Limitations

This product is for research use only and is not approved for use in humans or in clinical diagnosis. Primary Antibodies are guaranteed for 1 year from date of receipt.

For more information on our 100% guarantee, please visit www.novusbio.com/guarantee

Earn gift cards/discounts by submitting a review: www.novusbio.com/reviews/submit/NBP2-19323

Earn gift cards/discounts by submitting a publication using this product:
www.novusbio.com/publications

