

Product Datasheet

MCM2 Antibody NBP2-17238

Unit Size: 0.1 ml

Aliquot and store at -20C or -80C. Avoid freeze-thaw cycles.

www.novusbio.com



technical@novusbio.com

Protocols, Publications, Related Products, Reviews, Research Tools and Images at:
www.novusbio.com/NBP2-17238

Updated 7/17/2023 v.20.1

Earn rewards for product
reviews and publications.

Submit a publication at www.novusbio.com/publications

Submit a review at www.novusbio.com/reviews/destination/NBP2-17238



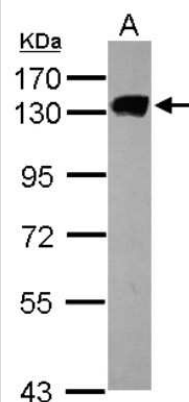
NBP2-17238**MCM2 Antibody**

Product Information	
Unit Size	0.1 ml
Concentration	Concentrations vary lot to lot. See vial label for concentration. If unlisted please contact technical services.
Storage	Aliquot and store at -20C or -80C. Avoid freeze-thaw cycles.
Clonality	Polyclonal
Preservative	0.01% Thimerosal
Isotype	IgG
Purity	Immunogen affinity purified
Buffer	PBS (pH 7), 20% Glycerol, 1% BSA
Target Molecular Weight	102 kDa
Product Description	
Host	Rabbit
Gene ID	4171
Gene Symbol	MCM2
Species	Human
Reactivity Notes	Chicken (81%).
Immunogen	Recombinant protein encompassing a sequence within the N-terminus region of human MCM2. The exact sequence is proprietary.
Product Application Details	
Applications	Western Blot, Immunocytochemistry/Immunofluorescence, Immunoprecipitation
Recommended Dilutions	Western Blot 1:500-1:3000, Immunocytochemistry/Immunofluorescence 1:100-1:1000, Immunoprecipitation 1:100-1:500

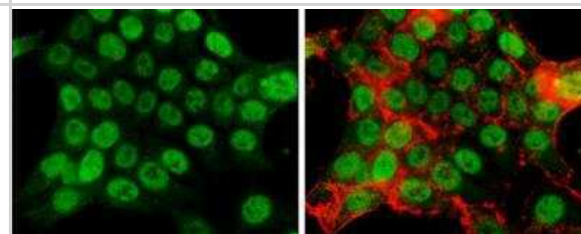


Images

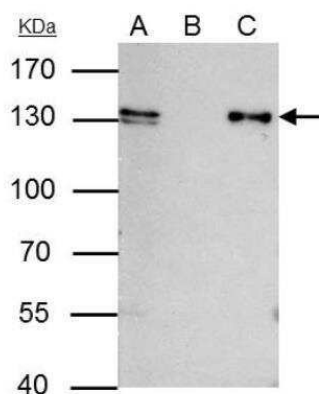
Western Blot: MCM2 Antibody [NBP2-17238] - Sample (30 ug of whole cell lysate) A: HCT116 7. 5% SDS PAGE gel, diluted at 1:1000.



Immunocytochemistry/Immunofluorescence: MCM2 Antibody [NBP2-17238] - HCT116 cells were fixed in 4% paraformaldehyde at RT for 15 min. Green: MCM2 protein stained by MCM2 antibody [N1N2], N-term diluted at 1:500. Red: phalloidin, a cytoskeleton marker, diluted at 1:50.



Immunoprecipitation: MCM2 Antibody [NBP2-17238] - IP samples: HCT-116 whole cell extract A. 40 ug HCT-116 whole cell extract B. Control with 4 ug of preimmune Rabbit IgG C. Immunoprecipitation of MCM2 protein by 4 ug MCM2 antibody [N1N2], N-term 7.5 % SDS-PAGE The immunoprecipitated MCM2 protein was detected by MCM2 antibody [N1N2], N-term diluted at 1:500. [EasyBlot anti-rabbit IgG was used as a secondary reagent]





Novus Biologicals USA

10730 E. Briarwood Avenue
Centennial, CO 80112
USA
Phone: 303.730.1950
Toll Free: 1.888.506.6887
Fax: 303.730.1966
novus@novusbio.com

Bio-Techne Canada

21 Canmotor Ave
Toronto, ON M8Z 4E6
Canada
Phone: 905.827.6400
Toll Free: 855.668.8722
Fax: 905.827.6402
canada.inquires@bio-techne.com

Bio-Techne Ltd

19 Barton Lane
Abingdon Science Park
Abingdon, OX14 3NB, United Kingdom
Phone: (44) (0) 1235 529449
Free Phone: 0800 37 34 15
Fax: (44) (0) 1235 533420
info.EMEA@bio-techne.com

General Contact Information

www.novusbio.com
Technical Support: technical@novusbio.com
Orders: orders@novusbio.com
General: novus@novusbio.com

Limitations

This product is for research use only and is not approved for use in humans or in clinical diagnosis. Primary Antibodies are guaranteed for 1 year from date of receipt.

For more information on our 100% guarantee, please visit www.novusbio.com/guarantee

Earn gift cards/discounts by submitting a review: www.novusbio.com/reviews/submit/NBP2-17238

Earn gift cards/discounts by submitting a publication using this product:
www.novusbio.com/publications

