

Product Datasheet

Max Antibody NBP2-17233

Unit Size: 0.1 ml

Aliquot and store at -20C or -80C. Avoid freeze-thaw cycles.

www.novusbio.com



technical@novusbio.com

Protocols, Publications, Related Products, Reviews, Research Tools and Images at:
www.novusbio.com/NBP2-17233

Updated 10/23/2024 v.20.1

Earn rewards for product
reviews and publications.

Submit a publication at www.novusbio.com/publications

Submit a review at www.novusbio.com/reviews/destination/NBP2-17233



NBP2-17233

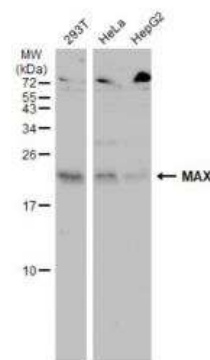
Max Antibody

Product Information	
Unit Size	0.1 ml
Concentration	Concentrations vary lot to lot. See vial label for concentration. If unlisted please contact technical services.
Storage	Aliquot and store at -20C or -80C. Avoid freeze-thaw cycles.
Clonality	Polyclonal
Preservative	0.025% Proclin 300
Isotype	IgG
Purity	Antigen Affinity-purified
Buffer	PBS (pH 7), 20% Glycerol
Target Molecular Weight	18 kDa
Product Description	
Host	Rabbit
Gene ID	4149
Gene Symbol	MAX
Species	Human
Reactivity Notes	Zebrafish (83%), Xenopus laevis (87%).
Immunogen	Recombinant protein encompassing a sequence within the center region of human Max. The exact sequence is proprietary.
Product Application Details	
Applications	Western Blot, Immunoprecipitation, Knockout Validated
Recommended Dilutions	Western Blot 1:500-1:3000, Immunoprecipitation 1:100-1:500, Knockout Validated

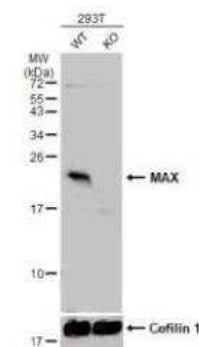


Images

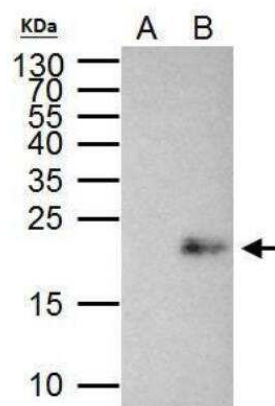
Western Blot: Max Antibody [NBP2-17233] - Various whole cell extracts (30 ug) were separated by 15% SDS-PAGE, and the membrane was blotted with MAX antibody diluted at 1:500. The HRP-conjugated anti-rabbit IgG antibody (NBP2-19301) was used to detect the primary antibody, and the signal was developed with Trident ECL plus-Enhanced.



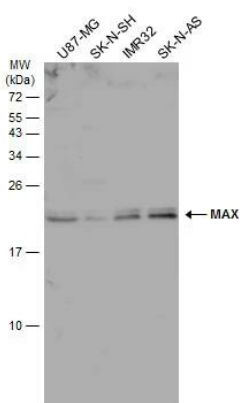
Western Blot: Max Antibody [NBP2-17233] - Wild-type (WT) and MAX knockout (KO) 293T cell extracts (30 ug) were separated by 15% SDS-PAGE, and the membrane was blotted with MAX antibody diluted at 1:500. HRP-conjugated anti-rabbit IgG antibody was used to detect the primary antibody.



Immunoprecipitation: Max Antibody [NBP2-17233] - IP Sample: 293T whole cell lysate/extract A. Control with 2 ug of preimmune rabbit IgG B. Immunoprecipitation of MAX protein by 2 ug of MAX antibody 15% SDS-PAGE The immunoprecipitated MAX protein was detected by MAX antibody diluted at 1:1000. EasyBlot anti-rabbit IgG was used as a secondary reagent.



Western Blot: Max Antibody [NBP2-17233] - Various whole cell extracts (30 ug) were separated by 15% SDS-PAGE, and the membrane was blotted with Max antibody (NBP2-17233) diluted at 1:500. The HRP-conjugated anti-rabbit IgG antibody was used to detect the primary antibody.





Novus Biologicals USA

10730 E. Briarwood Avenue
Centennial, CO 80112
USA
Phone: 303.730.1950
Toll Free: 1.888.506.6887
Fax: 303.730.1966
nb-customerservice@bio-techne.com

Bio-Techne Canada

21 Canmotor Ave
Toronto, ON M8Z 4E6
Canada
Phone: 905.827.6400
Toll Free: 855.668.8722
Fax: 905.827.6402
canada.inquires@bio-techne.com

Bio-Techne Ltd

19 Barton Lane
Abingdon Science Park
Abingdon, OX14 3NB, United Kingdom
Phone: (44) (0) 1235 529449
Free Phone: 0800 37 34 15
Fax: (44) (0) 1235 533420
info.EMEA@bio-techne.com

General Contact Information

www.novusbio.com
Technical Support: nb-technical@bio-
techne.com
Orders: nb-customerservice@bio-techne.com
General: novus@novusbio.com

Products Related to NBP2-17233

HAF008	Goat anti-Rabbit IgG Secondary Antibody [HRP]
NB7160	Goat anti-Rabbit IgG (H+L) Secondary Antibody [HRP]
NBP2-24891	Rabbit IgG Isotype Control
NBP1-44497	Recombinant Human Max His Protein

Limitations

This product is for research use only and is not approved for use in humans or in clinical diagnosis. Primary Antibodies are guaranteed for 1 year from date of receipt.

For more information on our 100% guarantee, please visit www.novusbio.com/guarantee

Earn gift cards/discounts by submitting a review: www.novusbio.com/reviews/submit/NBP2-17233

Earn gift cards/discounts by submitting a publication using this product:
www.novusbio.com/publications

