

Product Datasheet

KLF4 Antibody NBP2-17070

Unit Size: 0.1 ml

Aliquot and store at -20C or -80C. Avoid freeze-thaw cycles.

www.novusbio.com



technical@novusbio.com

Publications: 1

Protocols, Publications, Related Products, Reviews, Research Tools and Images at:
www.novusbio.com/NBP2-17070

Updated 7/25/2024 v.20.1

Earn rewards for product
reviews and publications.

Submit a publication at www.novusbio.com/publications

Submit a review at www.novusbio.com/reviews/destination/NBP2-17070



NBP2-17070**KLF4 Antibody****Product Information**

Unit Size	0.1 ml
Concentration	Concentrations vary lot to lot. See vial label for concentration. If unlisted please contact technical services.
Storage	Aliquot and store at -20C or -80C. Avoid freeze-thaw cycles.
Clonality	Polyclonal
Preservative	0.025% Proclin 300
Isotype	IgG
Purity	Immunogen affinity purified
Buffer	PBS (pH 7), 20% Glycerol, 1% BSA
Target Molecular Weight	55 kDa

Product Description

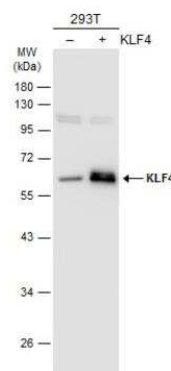
Host	Rabbit
Gene ID	9314
Gene Symbol	KLF4
Species	Human, Mouse, Rat
Reactivity Notes	Cat (100%), <i>Xenopus laevis</i> (86%).
Immunogen	Recombinant protein encompassing a sequence within the C-terminus region of human KLF4. The exact sequence is proprietary.

Product Application Details

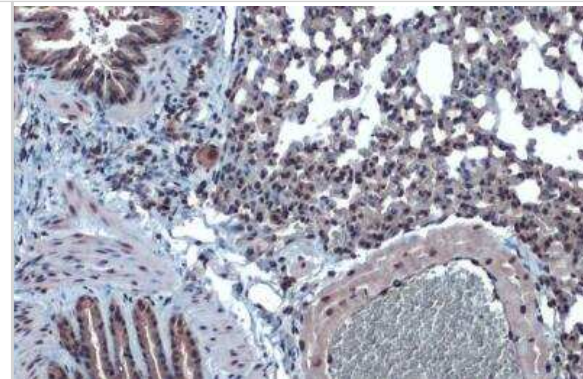
Applications	Western Blot, Flow Cytometry, Immunocytochemistry/ Immunofluorescence, Immunohistochemistry-Paraffin, Immunoprecipitation
Recommended Dilutions	Western Blot 1:500-1:3000, Flow Cytometry 1:50-1:200, Immunocytochemistry/ Immunofluorescence, Immunoprecipitation 1:100-1:500, Immunohistochemistry-Paraffin
Application Notes	ICC/IF Assay-dependent dilution

Images

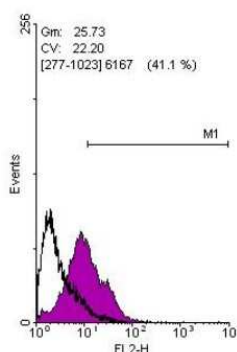
Western Blot: KLF4 Antibody [NBP2-17070] - Non-transfected (-) and transfected (+) 293T whole cell extracts (30 ug) were separated by 10% SDS-PAGE, and the membrane was blotted with KLF4 antibody diluted at 1:1000. The HRP-conjugated anti-rabbit IgG antibody (NBP2-19301) was used to detect the primary antibody..



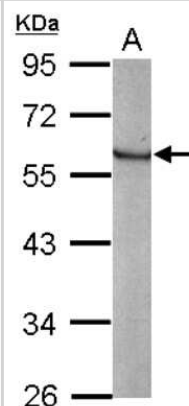
Immunohistochemistry-Paraffin: KLF4 Antibody [NBP2-17070] - Mouse lung. KLF4 stained by KLF4 antibody diluted at 1:1000. Antigen Retrieval: Citrate buffer, pH 6.0, 15 min.



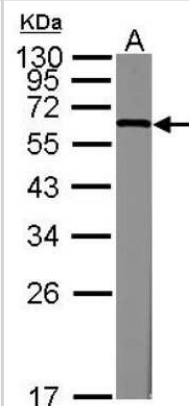
Flow Cytometry: KLF4 Antibody [NBP2-17070] - Human embryonic stem cells, staining with KLF4 antibody at 1:100 dilution (purple) or rabbit IgG (black).



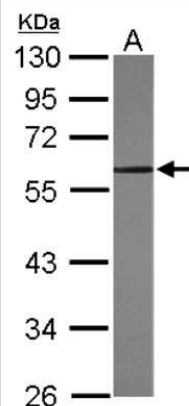
Western Blot: KLF4 Antibody [NBP2-17070] - Sample (20 ug of whole cell lysate) A: human ESC 10% SDS PAGE gel, diluted at 1:3000.



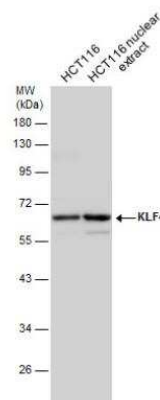
Western Blot: KLF4 Antibody [NBP2-17070] - Sample (20 ug of whole cell lysate) A: mouse ESC 12% SDS PAGE gel, diluted at 1:3000.



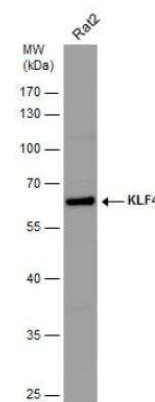
Western Blot: KLF4 Antibody [NBP2-17070] - Sample (30 ug of whole cell lysate) A: NIH-3T3 10% SDS PAGE gel, diluted at 1:5000.



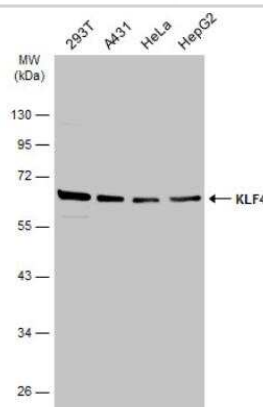
Western Blot: KLF4 Antibody [NBP2-17070] - HCT116 whole cell and nuclear extracts (30 ug) were separated by 10% SDS-PAGE, and the membrane was blotted with KLF4 antibody diluted at 1:2000.



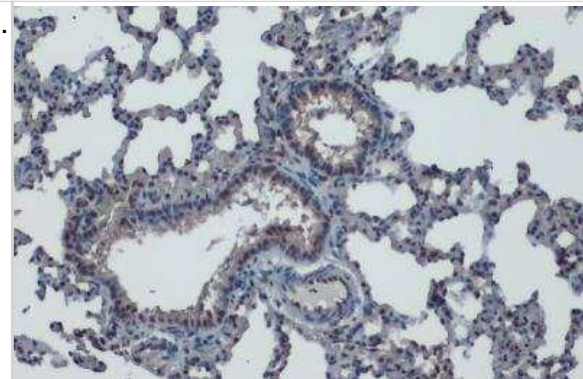
Western Blot: KLF4 Antibody [NBP2-17070] - Whole cell extract (30 ug) was separated by 10% SDS-PAGE, and the membrane was blotted with KLF4 antibody diluted at 1:5000.



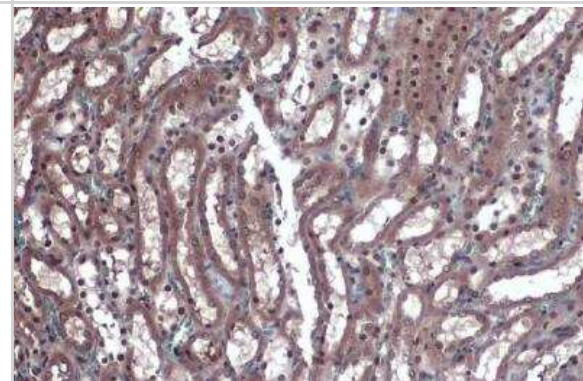
Western Blot: KLF4 Antibody [NBP2-17070] - Various whole cell extracts (30 ug) were separated by 10% SDS-PAGE, and the membrane was blotted with KLF4 antibody diluted at 1:5000. The HRP-conjugated anti-rabbit IgG antibody (NBP2-19301) was used to detect the primary antibody



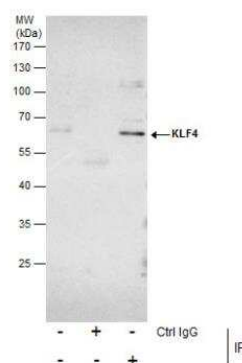
Immunohistochemistry-Paraffin: KLF4 Antibody [NBP2-17070] - Rat lung. KLF4 stained by KLF4 antibody diluted at 1:1000. Antigen Retrieval: Citrate buffer, pH 6.0, 15 min.



Immunohistochemistry-Paraffin: KLF4 Antibody [NBP2-17070] - Rat kidney. KLF4 stained by KLF4 antibody diluted at 1:1000. Antigen Retrieval: Citrate buffer, pH 6.0, 15 min.



Immunoprecipitation: KLF4 Antibody [NBP2-17070] - Immunoprecipitation of KLF4 protein from HeLa whole cell extracts using 5 ug of KLF4 antibody. Western blot analysis was performed using KLF4 antibody EasyBlot anti-Rabbit IgG) was used as a secondary reagent.



Publications

Ogunsina O, Banerjee R, Knauer LA, Yang Y. Pharmacological inhibition of FOXO1 promotes lymphatic valve growth in a congenital lymphedema mouse model *Frontiers in Cell and Developmental Biology* 2023-01-05 [PMID: 36742198] (WB)



Novus Biologicals USA

10730 E. Briarwood Avenue
Centennial, CO 80112
USA
Phone: 303.730.1950
Toll Free: 1.888.506.6887
Fax: 303.730.1966
nb-customerservice@bio-techne.com

Bio-Techne Canada

21 Canmotor Ave
Toronto, ON M8Z 4E6
Canada
Phone: 905.827.6400
Toll Free: 855.668.8722
Fax: 905.827.6402
canada.inquires@bio-techne.com

Bio-Techne Ltd

19 Barton Lane
Abingdon Science Park
Abingdon, OX14 3NB, United Kingdom
Phone: (44) (0) 1235 529449
Free Phone: 0800 37 34 15
Fax: (44) (0) 1235 533420
info.EMEA@bio-techne.com

General Contact Information

www.novusbio.com
Technical Support: nb-technical@bio-techne.com
Orders: nb-customerservice@bio-techne.com
General: novus@novusbio.com

Limitations

This product is for research use only and is not approved for use in humans or in clinical diagnosis. Primary Antibodies are guaranteed for 1 year from date of receipt.

For more information on our 100% guarantee, please visit www.novusbio.com/guarantee

Earn gift cards/discounts by submitting a review: www.novusbio.com/reviews/submit/NBP2-17070

Earn gift cards/discounts by submitting a publication using this product:
www.novusbio.com/publications

