

# Product Datasheet

## HIST1H3A Antibody NBP2-16841

Unit Size: 0.1 ml

Aliquot and store at -20C or -80C. Avoid freeze-thaw cycles.

[www.novusbio.com](http://www.novusbio.com)



[technical@novusbio.com](mailto:technical@novusbio.com)

Protocols, Publications, Related Products, Reviews, Research Tools and Images at:  
[www.novusbio.com/NBP2-16841](http://www.novusbio.com/NBP2-16841)

Updated 9/9/2025 v.20.1

Earn rewards for product  
reviews and publications.

Submit a publication at [www.novusbio.com/publications](http://www.novusbio.com/publications)

Submit a review at [www.novusbio.com/reviews/destination/NBP2-16841](http://www.novusbio.com/reviews/destination/NBP2-16841)



**NBP2-16841****HIST1H3A Antibody****Product Information**

<b>Unit Size</b>	0.1 ml
<b>Concentration</b>	Concentrations vary lot to lot. See vial label for concentration. If unlisted please contact technical services.
<b>Storage</b>	Aliquot and store at -20C or -80C. Avoid freeze-thaw cycles.
<b>Clonality</b>	Polyclonal
<b>Preservative</b>	0.025% Proclin 300
<b>Isotype</b>	IgG
<b>Purity</b>	Antigen Affinity-purified
<b>Buffer</b>	PBS (pH 7), 20% Glycerol, 1% BSA
<b>Target Molecular Weight</b>	15 kDa

**Product Description**

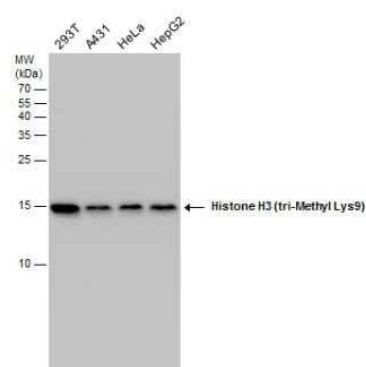
<b>Description</b>	Novus Biologicals Rabbit HIST1H3A Antibody (NBP2-16841) is a polyclonal antibody validated for use in IHC, WB, ICC/IF, IP and ChIP. All Novus Biologicals antibodies are covered by our 100% guarantee.
<b>Host</b>	Rabbit
<b>Gene ID</b>	8350
<b>Gene Symbol</b>	H3C1
<b>Species</b>	Human, Mouse, Rat, Canine
<b>Reactivity Notes</b>	Chimpanzee (100%).
<b>Immunogen</b>	Carrier-protein conjugated synthetic peptide surrounding tri-methyl Lys9 of human HIST1H3A. The exact sequence is proprietary.

**Product Application Details**

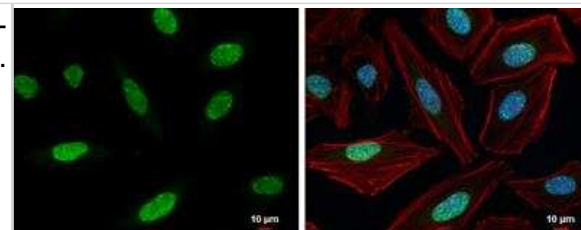
<b>Applications</b>	Western Blot, Immunohistochemistry-Paraffin, Electron Microscopy, Immunocytochemistry/ Immunofluorescence, Immunohistochemistry, Immunoprecipitation, Chromatin Immunoprecipitation (ChIP)
<b>Recommended Dilutions</b>	Western Blot 1:500-1:3000, Immunohistochemistry 1:100-1:1000, Immunocytochemistry/ Immunofluorescence 1:100-1:1000, Immunoprecipitation 1:100-1:1000, Immunohistochemistry-Paraffin 1:100-1:1000, Electron Microscopy, Chromatin Immunoprecipitation (ChIP) 1:10-1:500

**Images**

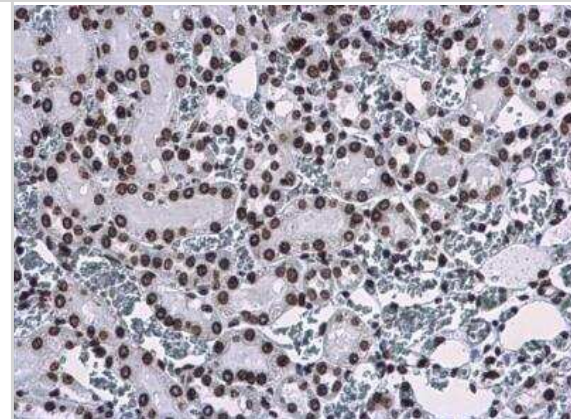
Western Blot: HIST1H3A Antibody [NBP2-16841] - Various whole cell extracts (30 ug) were separated by 15% SDS-PAGE, and the membrane was blotted with Histone H3 (tri-Methyl Lys9) antibody diluted at a dilution of 1:1000. The HRP-conjugated anti-rabbit IgG antibody (NBP2-19301) was used to detect the primary antibody.



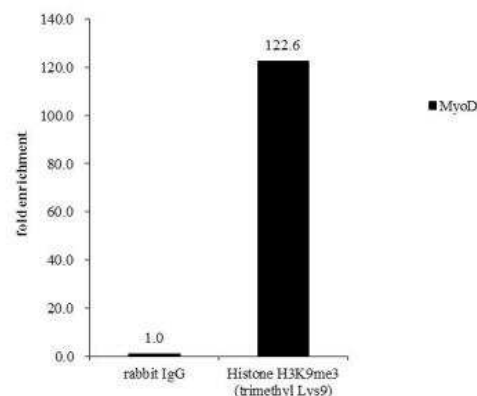
**Immunocytochemistry/Immunofluorescence:** HIST1H3A Antibody [NBP2-16841] - HeLa cells were fixed in 4% paraformaldehyde at RT for 15 min. Green: Histone H3K9me3 (trimethyl Lys9) protein stained by Histone H3K9me3 (trimethyl Lys9) antibody diluted at 1:500. Red: Phalloidin, a cytoskeleton marker, diluted at 1:200. Blue: Hoechst 33342 staining. Scale bar = 10  $\mu$ m.



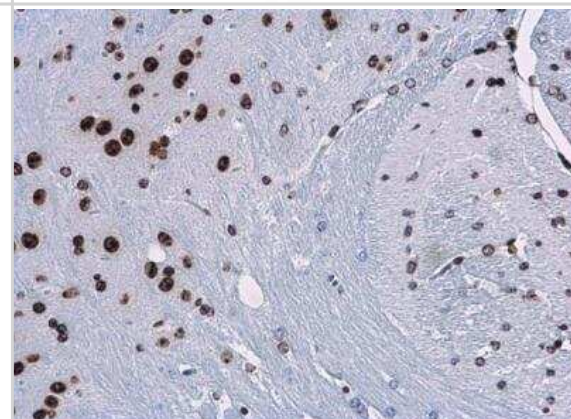
**Immunohistochemistry-Paraffin:** HIST1H3A Antibody [NBP2-16841] - Paraffin-embedded rat kidney. Histone H3K9me3 (trimethyl Lys9) antibody diluted at 1:500.



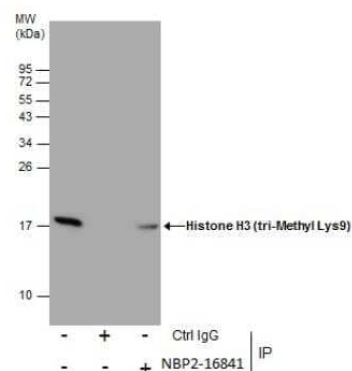
**Chromatin Immunoprecipitation:** HIST1H3A Antibody [NBP2-16841] - Cross-linked ChIP was performed with HepG2 chromatin extract and 5  $\mu$ g of either normal rabbit IgG or anti-Histone H3K9me3 (trimethyl Lys9) antibody. The precipitated DNA was detected by PCR with primer set targeting to MyoD



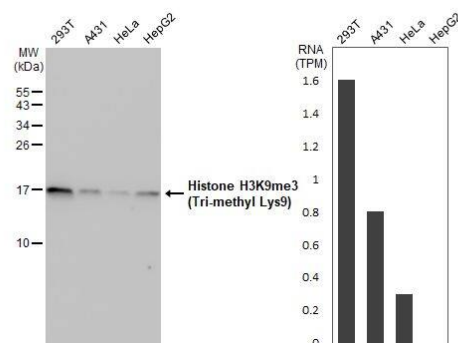
**Immunohistochemistry-Paraffin:** HIST1H3A Antibody [NBP2-16841] - Paraffin-embedded mouse brain. Histone H3K9me3 (trimethyl Lys9) antibody diluted at 1:500.



**Immunoprecipitation: HIST1H3A Antibody [NBP2-16841] -**  
**Immunoprecipitation of Histone H3 (tri-Methyl Lys9) protein from 293T**  
 whole cell extracts using 5 ug of Histone H3 (tri-Methyl Lys9). Western  
 blot analysis was performed using Histone H3 (tri-Methyl Lys9). EasyBlot  
 anti-Rabbit IgG was used as a secondary reagent.



**Western Blot: HIST1H3A Antibody [NBP2-16841] - Various whole cell**  
**extracts (30 ug) were separated by 15% SDS-PAGE, and the membrane**  
**was blotted with Histone H3K9me3 (Tri-methyl Lys9) antibody diluted at**  
**1:1000. The HRP-conjugated anti-rabbit IgG antibody was used to detect**  
**the primary antibody. Corresponding RNA expression data for the same**  
**cell lines are based on Human Protein Atlas program.**





### **Novus Biologicals USA**

10730 E. Briarwood Avenue  
Centennial, CO 80112  
USA  
Phone: 303.730.1950  
Toll Free: 1.888.506.6887  
Fax: 303.730.1966  
nb-customerservice@bio-techne.com

### **Bio-Techne Canada**

21 Canmotor Ave  
Toronto, ON M8Z 4E6  
Canada  
Phone: 905.827.6400  
Toll Free: 855.668.8722  
Fax: 905.827.6402  
canada.inquires@bio-techne.com

### **Bio-Techne Ltd**

19 Barton Lane  
Abingdon Science Park  
Abingdon, OX14 3NB, United Kingdom  
Phone: (44) (0) 1235 529449  
Free Phone: 0800 37 34 15  
Fax: (44) (0) 1235 533420  
info.EMEA@bio-techne.com

### **General Contact Information**

www.novusbio.com  
Technical Support: nb-technical@bio-techne.com  
Orders: nb-customerservice@bio-techne.com  
General: novus@novusbio.com

### **Products Related to NBP2-16841**

---

HAF008	Goat anti-Rabbit IgG Secondary Antibody [HRP]
NB7160	Goat anti-Rabbit IgG (H+L) Secondary Antibody [HRP]
NBP2-24891	Rabbit IgG Isotype Control
NBP2-06572	HIST2H3C Overexpression Lysate

---

### **Limitations**

This product is for research use only and is not approved for use in humans or in clinical diagnosis. Primary Antibodies are guaranteed for 1 year from date of receipt.

For more information on our 100% guarantee, please visit [www.novusbio.com/guarantee](http://www.novusbio.com/guarantee)

Earn gift cards/discounts by submitting a review: [www.novusbio.com/reviews/submit/NBP2-16841](http://www.novusbio.com/reviews/submit/NBP2-16841)

Earn gift cards/discounts by submitting a publication using this product:  
[www.novusbio.com/publications](http://www.novusbio.com/publications)

