

Product Datasheet

Fast skeletal myosin light chain 1 Antibody NBP2-16433

Unit Size: 0.1 ml

Aliquot and store at -20C or -80C. Avoid freeze-thaw cycles.

www.novusbio.com



technical@novusbio.com

Protocols, Publications, Related Products, Reviews, Research Tools and Images at:
www.novusbio.com/NBP2-16433

Updated 10/23/2024 v.20.1

Earn rewards for product
reviews and publications.

Submit a publication at www.novusbio.com/publications

Submit a review at www.novusbio.com/reviews/destination/NBP2-16433

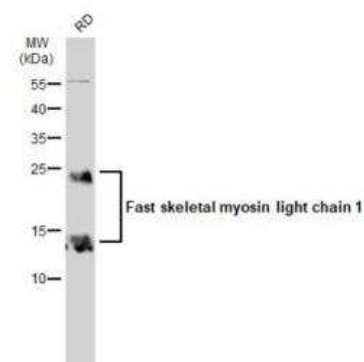


NBP2-16433**Fast skeletal myosin light chain 1 Antibody**

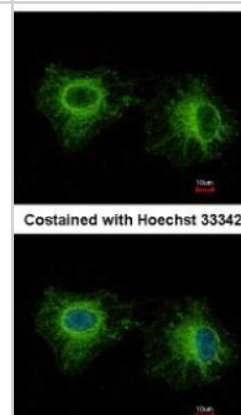
Product Information	
Unit Size	0.1 ml
Concentration	Concentrations vary lot to lot. See vial label for concentration. If unlisted please contact technical services.
Storage	Aliquot and store at -20C or -80C. Avoid freeze-thaw cycles.
Clonality	Polyclonal
Preservative	0.025% Proclin 300
Isotype	IgG
Purity	Antigen Affinity-purified
Buffer	PBS, 1% BSA, 20% Glycerol
Target Molecular Weight	21 kDa
Product Description	
Host	Rabbit
Gene ID	4632
Gene Symbol	MYL1
Species	Human, Mouse, Rat
Reactivity Notes	Immunogen displays the following percentage of sequence identity for non-tested species: Chicken (82%).
Immunogen	Recombinant protein encompassing a sequence within the center region of human Fast skeletal myosin light chain 1. The exact sequence is proprietary.
Product Application Details	
Applications	Western Blot, Immunocytochemistry/ Immunofluorescence
Recommended Dilutions	Western Blot 1:1000-1:10000, Immunocytochemistry/ Immunofluorescence 1:100-1:1000

Images

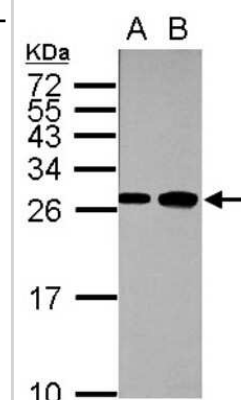
Western Blot: Fast skeletal myosin light chain 1 Antibody [NBP2-16433] - RD whole cell extract (30 ug) was separated by 15% SDS-PAGE, and the membrane was blotted with Fast skeletal myosin light chain 1 antibody diluted at 1:1000. The HRP-conjugated anti-rabbit IgG antibody (NBP2-19301) was used to detect the primary antibody.



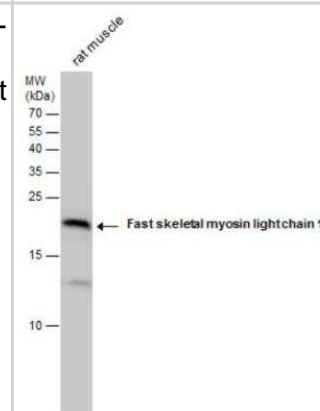
Immunocytochemistry/Immunofluorescence: Fast skeletal myosin light chain 1 Antibody [NBP2-16433] - Analysis of paraformaldehyde-fixed HeLa, using antibody at 1:500 dilution.



Western Blot: Fast skeletal myosin light chain 1 Antibody [NBP2-16433] - Sample (whole cell lysate) A: 1ug mouse heart, B: 5ug mouse heart, 15% SDS PAGE gel, diluted at 1:10000.



Western Blot: Fast skeletal myosin light chain 1 Antibody [NBP2-16433] - Rat tissue extracts (1 ug) was separated by 15 % SDS-PAGE, and the membrane was blotted with Fast skeletal myosin light chain 1 antibody at a dilution of 1:20000.





Novus Biologicals USA

10730 E. Briarwood Avenue
Centennial, CO 80112
USA
Phone: 303.730.1950
Toll Free: 1.888.506.6887
Fax: 303.730.1966
nb-customerservice@bio-techne.com

Bio-Techne Canada

21 Canmotor Ave
Toronto, ON M8Z 4E6
Canada
Phone: 905.827.6400
Toll Free: 855.668.8722
Fax: 905.827.6402
canada.inquires@bio-techne.com

Bio-Techne Ltd

19 Barton Lane
Abingdon Science Park
Abingdon, OX14 3NB, United Kingdom
Phone: (44) (0) 1235 529449
Free Phone: 0800 37 34 15
Fax: (44) (0) 1235 533420
info.EMEA@bio-techne.com

General Contact Information

www.novusbio.com
Technical Support: nb-technical@bio-techne.com
Orders: nb-customerservice@bio-techne.com
General: novus@novusbio.com

Products Related to NBP2-16433

HAF008	Goat anti-Rabbit IgG Secondary Antibody [HRP]
NB7160	Goat anti-Rabbit IgG (H+L) Secondary Antibody [HRP]
NBP2-24891	Rabbit IgG Isotype Control
H00004632-P01-10ug	Recombinant Human Fast skeletal myosin light chain 1 GST (N-Term) Protein

Limitations

This product is for research use only and is not approved for use in humans or in clinical diagnosis. Primary Antibodies are guaranteed for 1 year from date of receipt.

For more information on our 100% guarantee, please visit www.novusbio.com/guarantee

Earn gift cards/discounts by submitting a review: www.novusbio.com/reviews/submit/NBP2-16433

Earn gift cards/discounts by submitting a publication using this product:
www.novusbio.com/publications

