

Product Datasheet

COBRA1 Antibody NBP2-15935

Unit Size: 0.1 ml

Aliquot and store at -20C or -80C. Avoid freeze-thaw cycles.

www.novusbio.com



technical@novusbio.com

Protocols, Publications, Related Products, Reviews, Research Tools and Images at:
www.novusbio.com/NBP2-15935

Updated 10/23/2024 v.20.1

Earn rewards for product
reviews and publications.

Submit a publication at www.novusbio.com/publications

Submit a review at www.novusbio.com/reviews/destination/NBP2-15935



NBP2-15935

COBRA1 Antibody

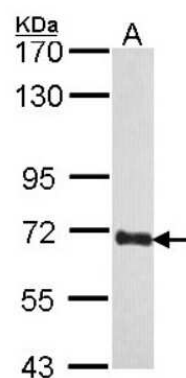
Product Information	
Unit Size	0.1 ml
Concentration	Concentrations vary lot to lot. See vial label for concentration. If unlisted please contact technical services.
Storage	Aliquot and store at -20C or -80C. Avoid freeze-thaw cycles.
Clonality	Polyclonal
Preservative	0.01% Thimerosal
Isotype	IgG
Purity	Antigen Affinity-purified
Buffer	PBS (pH 7), 40% Glycerol
Target Molecular Weight	66 kDa

Product Description	
Host	Rabbit
Gene ID	25920
Gene Symbol	COBRA1
Species	Human, Mouse
Reactivity Notes	Immunogen displays the following percentage of sequence identity for non-tested species: <i>Xenopus laevis</i> (85%), Zebrafish (86%), <i>Xenopus tropicalis</i> (86%).
Immunogen	Recombinant protein encompassing a sequence within the center region of human COBRA1. The exact sequence is proprietary.

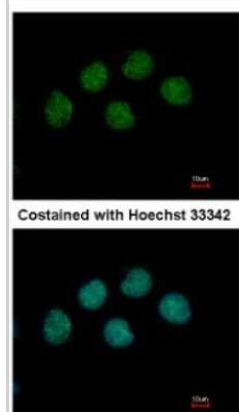
Product Application Details	
Applications	Western Blot, Immunocytochemistry/ Immunofluorescence, Immunohistochemistry, Immunohistochemistry-Paraffin
Recommended Dilutions	Western Blot 1:500-1:3000, Immunohistochemistry 10 - 1:500, Immunocytochemistry/ Immunofluorescence 1:100-1:1000, Immunohistochemistry-Paraffin 1:100-1:1000

Images

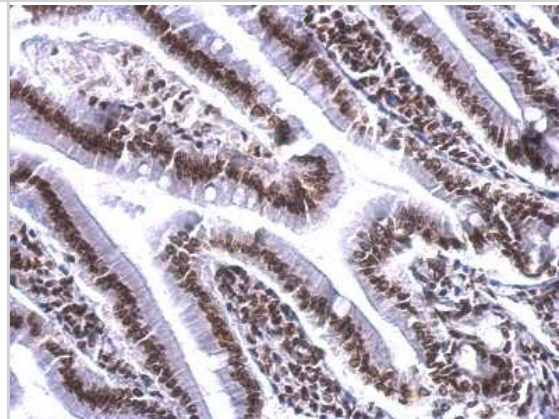
Western Blot: COBRA1 Antibody [NBP2-15935] - Sample (30 ug of whole cell lysate) A: H1299 5% SDS PAGE gel, diluted at 1:1000.



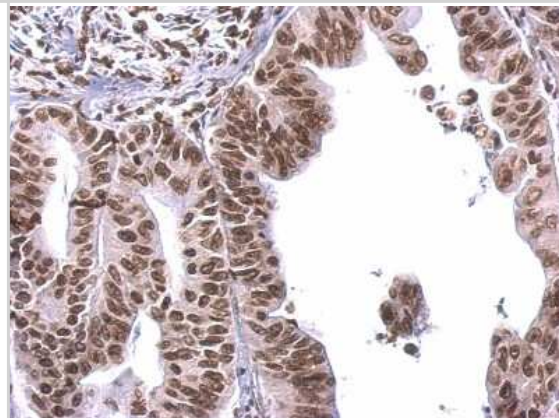
Immunocytochemistry/Immunofluorescence: COBRA1 Antibody [NBP2-15935] - Immunofluorescence analysis of methanol-fixed H1299, using antibody at 1:500 dilution.



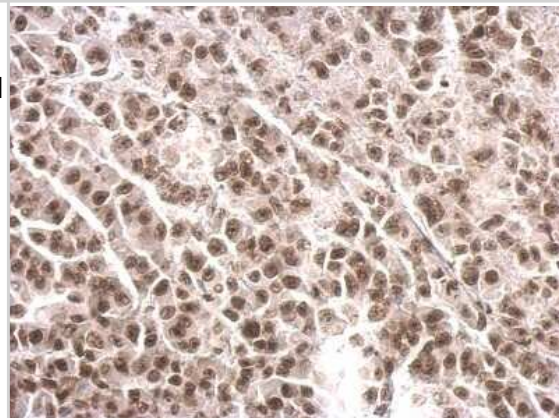
Immunohistochemistry-Paraffin: COBRA1 Antibody [NBP2-15935] - Antibody detects COBRA1 protein at nucleus on mouse intestine by immunohistochemical analysis. Sample: Paraffin-embedded mouse intestine. COBRA1 antibody dilution: 1:500.



Immunohistochemistry-Paraffin: COBRA1 Antibody [NBP2-15935] - Nucleus on gastric carcinoma; antibody dilution: 1:500.



Immunohistochemistry-Paraffin: COBRA1 Antibody [NBP2-15935] - COBRA1 antibody detects COBRA1 protein at nucleus on HBL435 xenograft by immunohistochemical analysis. Sample: Paraffin-embedded HBL435 xenograft. COBRA1 antibody dilution: 1:500.





Novus Biologicals USA

10730 E. Briarwood Avenue
Centennial, CO 80112
USA
Phone: 303.730.1950
Toll Free: 1.888.506.6887
Fax: 303.730.1966
nb-customerservice@bio-techne.com

Bio-Techne Canada

21 Canmotor Ave
Toronto, ON M8Z 4E6
Canada
Phone: 905.827.6400
Toll Free: 855.668.8722
Fax: 905.827.6402
canada.inquires@bio-techne.com

Bio-Techne Ltd

19 Barton Lane
Abingdon Science Park
Abingdon, OX14 3NB, United Kingdom
Phone: (44) (0) 1235 529449
Free Phone: 0800 37 34 15
Fax: (44) (0) 1235 533420
info.EMEA@bio-techne.com

General Contact Information

www.novusbio.com
Technical Support: nb-technical@bio-techne.com
Orders: nb-customerservice@bio-techne.com
General: novus@novusbio.com

Products Related to NBP2-15935

HAF008	Goat anti-Rabbit IgG Secondary Antibody [HRP]
NB7160	Goat anti-Rabbit IgG (H+L) Secondary Antibody [HRP]
NBP2-24891	Rabbit IgG Isotype Control
H00025920-P01-10ug	Recombinant Human COBRA1 GST (N-Term) Protein

Limitations

This product is for research use only and is not approved for use in humans or in clinical diagnosis. Primary Antibodies are guaranteed for 1 year from date of receipt.

For more information on our 100% guarantee, please visit www.novusbio.com/guarantee

Earn gift cards/discounts by submitting a review: www.novusbio.com/reviews/submit/NBP2-15935

Earn gift cards/discounts by submitting a publication using this product:
www.novusbio.com/publications

