

Product Datasheet

CHL-1/L1CAM-2 Antibody NBP2-15885

Unit Size: 0.1 ml

Aliquot and store at -20C or -80C. Avoid freeze-thaw cycles.

www.novusbio.com



technical@novusbio.com

Protocols, Publications, Related Products, Reviews, Research Tools and Images at:
www.novusbio.com/NBP2-15885

Updated 4/1/2018 v.20.1

Earn rewards for product
reviews and publications.

Submit a publication at www.novusbio.com/publications

Submit a review at www.novusbio.com/reviews/destination/NBP2-15885

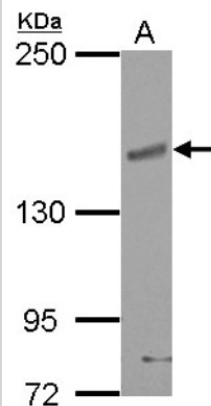


NBP2-15885**CHL-1/L1CAM-2 Antibody**

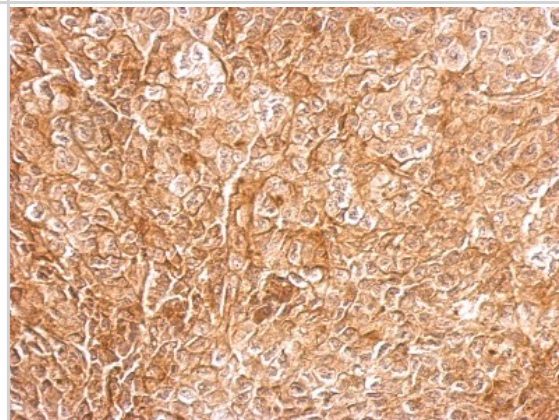
Product Information	
Unit Size	0.1 ml
Concentration	Concentrations vary lot to lot. See vial label for concentration. If unlisted please contact technical services.
Storage	Aliquot and store at -20C or -80C. Avoid freeze-thaw cycles.
Clonality	Polyclonal
Preservative	0.01% Thimerosal
Purity	Immunogen affinity purified
Buffer	PBS (pH 7.0), 1.0% BSA and 20% Glycerol
Target Molecular Weight	137 kDa
Product Description	
Host	Rabbit
Gene ID	10752
Gene Symbol	CHL1
Species	Human
Reactivity Notes	Human.
Immunogen	Recombinant protein encompassing a sequence within the C-terminus region of human CHL1. The exact sequence is proprietary.
Product Application Details	
Applications	Western Blot, Immunohistochemistry, Immunohistochemistry-Paraffin
Recommended Dilutions	Western Blot 1:500-1:3000, Immunohistochemistry 1:10-1:500, Immunohistochemistry-Paraffin 1:100-1:1000
Application Notes	suggested antigen retrieval using heat mediated 10mM Citrate buffer (pH6.0) or Tris-EDTA buffer (pH8.0)

Images

Western Blot: CHL1 Antibody [NBP2-15885] - Sample (30 ug of whole cell lysate) A: U87-MG 5% SDS PAGE gel, diluted at 1:1000.



Immunohistochemistry-Paraffin: CHL1 Antibody [NBP2-15885] - Cytosol on D54MG xenograft; antibody dilution: 1:500.





Novus Biologicals USA

10730 E. Briarwood Avenue
Centennial, CO 80112
USA

Phone: 303.730.1950
Toll Free: 1.888.506.6887
Fax: 303.730.1966
novus@novusbio.com

Novus Biologicals Canada

461 North Service Road West, Unit B37
Oakville, ON L6M 2V5
Canada

Phone: 905.827.6400
Toll Free: 855.668.8722
Fax: 905.827.6402
canada@novusbio.com

Novus Biologicals Europe

19 Barton Lane
Abingdon Science Park
Abingdon, OX14 3NB, United Kingdom

Phone: (44) (0) 1235 529449
Free Phone: 0800 37 34 15
Fax: (44) (0) 1235 533420
info@bio-techne.com

General Contact Information

www.novusbio.com
Technical Support: technical@novusbio.com
Orders: orders@novusbio.com
General: novus@novusbio.com

Limitations

This product is for research use only and is not approved for use in humans or in clinical diagnosis. Primary Antibodies are guaranteed for 1 year from date of receipt.

For more information on our 100% guarantee, please visit www.novusbio.com/guarantee

Earn gift cards/discounts by submitting a review: www.novusbio.com/reviews/submit/NBP2-15885

Earn gift cards/discounts by submitting a publication using this product:
www.novusbio.com/publications

