

Product Datasheet

PD-L1 Antibody NBP2-15791

Unit Size: 0.1 ml

Aliquot and store at -20C or -80C. Avoid freeze-thaw cycles.

www.novusbio.com



technical@novusbio.com

Publications: 3

Protocols, Publications, Related Products, Reviews, Research Tools and Images at:
www.novusbio.com/NBP2-15791

Updated 10/23/2024 v.20.1

Earn rewards for product
reviews and publications.

Submit a publication at www.novusbio.com/publications

Submit a review at www.novusbio.com/reviews/destination/NBP2-15791



NBP2-15791**PD-L1 Antibody****Product Information**

Unit Size	0.1 ml
Concentration	Concentrations vary lot to lot. See vial label for concentration. If unlisted please contact technical services.
Storage	Aliquot and store at -20C or -80C. Avoid freeze-thaw cycles.
Clonality	Polyclonal
Preservative	0.025% Proclin 300
Isotype	IgG
Purity	Antigen Affinity-purified
Buffer	PBS, 20% Glycerol
Target Molecular Weight	33 kDa

Product Description

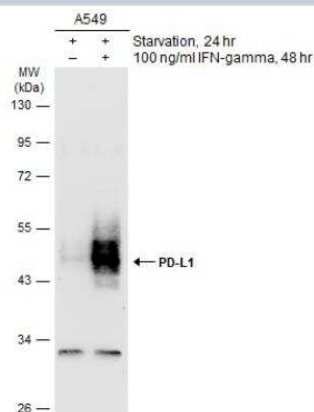
Host	Rabbit
Gene ID	29126
Gene Symbol	CD274
Species	Human
Immunogen	Carrier-protein conjugated synthetic peptide encompassing a sequence within the C-terminus region of human PD-L1. The exact sequence is proprietary.

Product Application Details

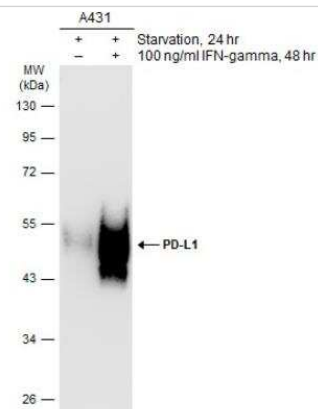
Applications	Western Blot, Flow Cytometry, Immunocytochemistry/ Immunofluorescence, Immunohistochemistry, Immunohistochemistry-Frozen, Immunohistochemistry-Paraffin
Recommended Dilutions	Western Blot 1:500-1:3000, Flow Cytometry Assay-dependent dilution, Immunohistochemistry, Immunocytochemistry/ Immunofluorescence 1:100-1:1000, Immunohistochemistry-Paraffin 1:100-1:1000, Immunohistochemistry-Frozen Assay dependent

Images

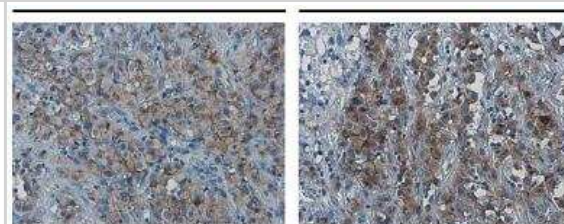
Western Blot: PD-L1 Antibody [NBP2-15791] - PD-L1/B7-H1 Antibody [NBP2-15791] - Untreated (-) and treated (+) A549 whole cell extracts (30 ug) were separated by 10% SDS-PAGE, and the membranes were blotted with PD-L1 antibody. The HRP-conjugated anti-rabbit IgG antibody (NBP2-19301) was used to detect the primary antibody.



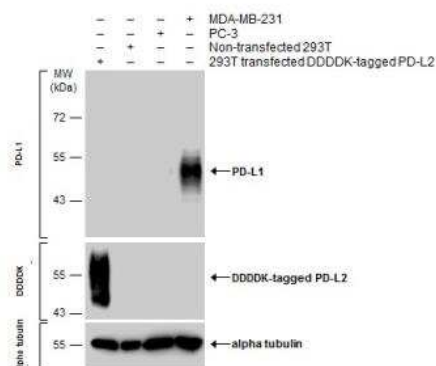
Western Blot: PD-L1 Antibody [NBP2-15791] - PD-L1/B7-H1 Antibody [NBP2-15791] - Untreated (-) and treated (+) A431 whole cell extracts (30 ug) were separated by 10% SDS-PAGE, and the membranes were blotted with PD-L1 antibody. The HRP-conjugated anti-rabbit IgG antibody (NBP2-19301) was used to detect the primary antibody.



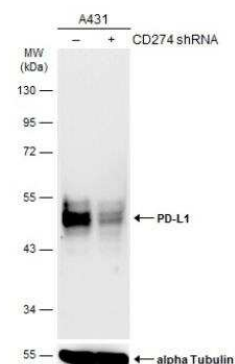
Immunohistochemistry-Paraffin: PD-L1/B7-H1 Antibody [NBP2-15791] - PD-L1 antibody detects PD-L1 protein at cell membrane in human ovarian carcinoma by immunohistochemical analysis. Antibodies: PD-L1 antibody, and competitor's antibody.



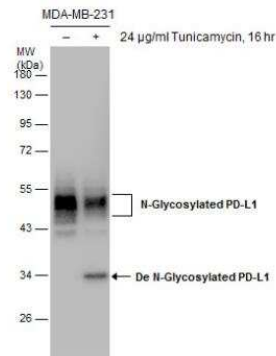
Western Blot: PD-L1/B7-H1 Antibody [NBP2-15791] - Various whole cell extracts were separated by 10% SDS-PAGE, and the membranes were blotted with PD-L1 antibody diluted at 1:600 and with DDDDK tag antibody (NBP2-43574) diluted at 1:3000 to detect DDDDK-tagged PD-L2. The HRP-conjugated anti-rabbit IgG antibody (NBP2-19301) was used to detect the primary antibody.



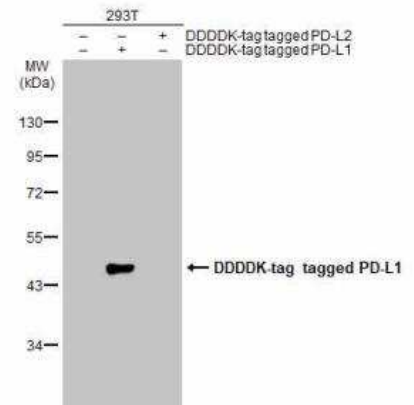
Western Blot: PD-L1 Antibody [NBP2-15791] - PD-L1/B7-H1 Antibody [NBP2-15791] - Non-transfected (-) and transfected (+) A431 whole cell extracts (30 ug) were separated by 10% SDS-PAGE, and the membrane was blotted with PD-L1 antibody. HRP-conjugated anti-rabbit IgG antibody (NBP2-19301) was used to detect the primary antibody.



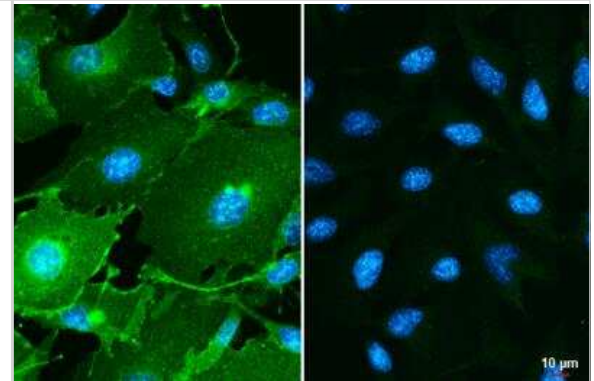
Western Blot: PD-L1/B7-H1 Antibody [NBP2-15791] - Untreated (-) and treated (+) MDA-MB-231 whole cell extracts (30 ug) were separated by 10% SDS-PAGE, and the membrane was blotted with PD-L1 antibody.



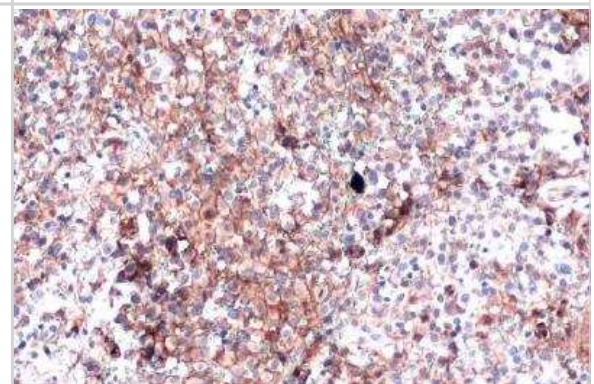
Western Blot: PD-L1 Antibody [NBP2-15791] - Non-transfected (-) and transfected (+) 293T whole cell extracts (30 ug) were separated by 10% SDS-PAGE, and the membrane was blotted with PD-L1 antibody diluted at 1:1000. The HRP-conjugated anti-rabbit IgG antibody (NBP2-19301) was used to detect the primary antibody, and the signal was developed with Trident ECL plus-Enhanced.



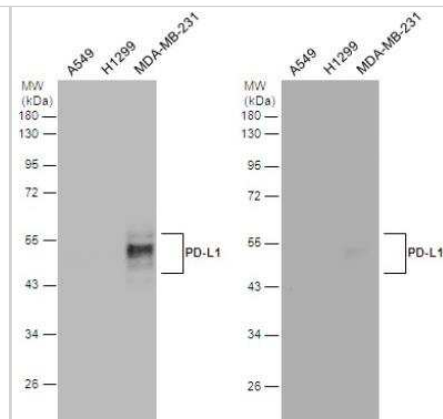
Immunocytochemistry/Immunofluorescence: PD-L1 Antibody [NBP2-15791] - MDA-MB-231 (left) and HeLa (right) cells were fixed in ice-cold MeOH for 5 min. Green: PD-L1 stained by PD-L1 antibody diluted at 1:500. Blue: Hoechst 33342 staining. Scale bar= 10 µm.



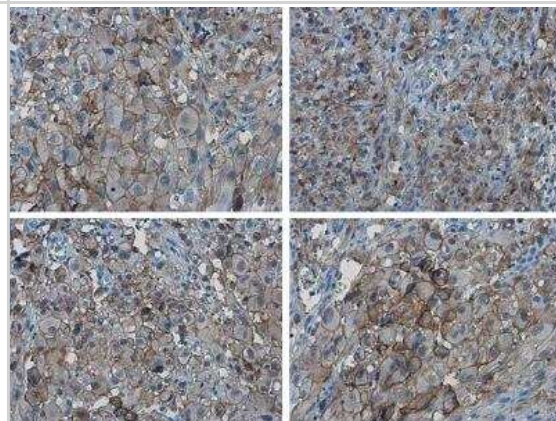
Immunohistochemistry-Paraffin: PD-L1 Antibody [NBP2-15791] - Human ovarian cancer. PD-L1 stained by PD-L1 antibody diluted at 1:4000. Antigen Retrieval: Citrate buffer, pH 6.0, 15 min.



Western Blot: PD-L1 Antibody [NBP2-15791] - PD-L1/B7-H1 Antibody [NBP2-15791] - Various whole cell extracts (30 ug) were separated by 12% SDS-PAGE, and the membranes were blotted with PD-L1 antibody. HRP-conjugated anti-rabbit IgG antibody was used to detect the primary antibody. NBP2-15791 on the left and competitor's antibody on the right.

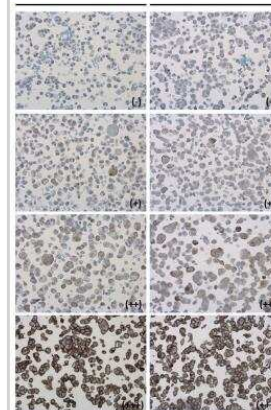


Immunohistochemistry-Paraffin: PD-L1/B7-H1 Antibody [NBP2-15791] - PD-L1 protein at cell membrane in human ovarian carcinoma by immunohistochemical analysis. Sample: Paraffin-embedded human ovarian carcinoma. PD-L1 antibody diluted at 1:1000.

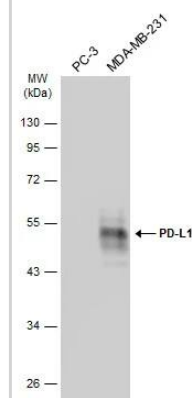


Immunohistochemistry-Paraffin: PD-L1 Antibody [NBP2-15791] - Detection of cell membranes in PD-L1 protein-expressing cell lines by immunohistochemical analysis. Antibodies: PD-L1 antibody, and competitor's antibody.

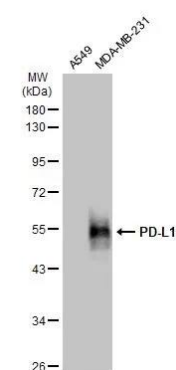
Samples: Negative (-), low positive (+), intermediate positive (++) and strong positive (+++) cell line cores assessed using Quantitative Digital Pathology.



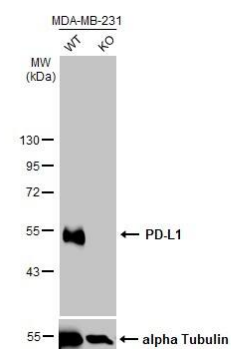
Western Blot: PD-L1 Antibody [NBP2-15791] - Various whole cell extracts (30 ug) were separated by 10% SDS-PAGE, and the membrane was blotted with PD-L1 antibody (NBP2-15791) diluted at 1:2000. The HRP-conjugated anti-rabbit IgG antibody was used to detect the primary antibody, and the signal was developed with Trident ECL plus-Enhanced.



Western Blot: PD-L1 Antibody [NBP2-15791] - Various whole cell extracts (30 ug) were separated by 10% SDS-PAGE, and the membrane was blotted with PD-L1 antibody (NBP2-15791) diluted at 1:2000. The HRP-conjugated anti-rabbit IgG antibody was used to detect the primary antibody.



Western Blot: PD-L1 Antibody [NBP2-15791] - Wild-type (WT) and PD-L1 knockout (KO) MDA-MB-231 cell extracts (30 ug) were separated by 10% SDS-PAGE, and the membrane was blotted with PD-L1 antibody diluted at 1:4000. The HRP-conjugated anti-rabbit IgG antibody was used to detect the primary antibody.



Publications

Bu J, Jeong W, Jafari R et al. Bimodal liquid biopsy for cancer immunotherapy based on peptide engineering and nanoscale analysis Biosensors and Bioelectronics 2022-06-01 [PMID: 35679646]

Di Tinco R, Bertani G, Pisciotto A et al. Role of PD-L1 in licensing immunoregulatory function of dental pulp mesenchymal stem cells Stem cell research & therapy 2021-12-04 [PMID: 34863286] (IHC-P, WB, ICC/IF, Human)

Samman DME, Mahdy MME, Cousha HS Et al. Immunohistochemical expression of programmed death-ligand 1 and CD8 in glioblastomas Journal of pathology and translational medicine 2021-10-14 [PMID: 34638219] (IHC-P, Human)



Novus Biologicals USA

10730 E. Briarwood Avenue
Centennial, CO 80112
USA
Phone: 303.730.1950
Toll Free: 1.888.506.6887
Fax: 303.730.1966
nb-customerservice@bio-techne.com

Bio-Techne Canada

21 Canmotor Ave
Toronto, ON M8Z 4E6
Canada
Phone: 905.827.6400
Toll Free: 855.668.8722
Fax: 905.827.6402
canada.inquires@bio-techne.com

Bio-Techne Ltd

19 Barton Lane
Abingdon Science Park
Abingdon, OX14 3NB, United Kingdom
Phone: (44) (0) 1235 529449
Free Phone: 0800 37 34 15
Fax: (44) (0) 1235 533420
info.EMEA@bio-techne.com

General Contact Information

www.novusbio.com
Technical Support: nb-technical@bio-techne.com
Orders: nb-customerservice@bio-techne.com
General: novus@novusbio.com

Products Related to NBP2-15791

HAF008	Goat anti-Rabbit IgG Secondary Antibody [HRP]
NB7160	Goat anti-Rabbit IgG (H+L) Secondary Antibody [HRP]
NBP2-24891	Rabbit IgG Isotype Control
NBP1-76769PEP-0.1mg	PD-L1 Antibody Blocking Peptide

Limitations

This product is for research use only and is not approved for use in humans or in clinical diagnosis. Primary Antibodies are guaranteed for 1 year from date of receipt.

For more information on our 100% guarantee, please visit www.novusbio.com/guarantee

Earn gift cards/discounts by submitting a review: www.novusbio.com/reviews/submit/NBP2-15791

Earn gift cards/discounts by submitting a publication using this product:
www.novusbio.com/publications

