

# Product Datasheet

## Carboxypeptidase E/CPE Antibody - BSA Free NBP2-15699

Unit Size: 0.1 ml

Aliquot and store at -20C or -80C. Avoid freeze-thaw cycles.

[www.novusbio.com](http://www.novusbio.com)



[technical@novusbio.com](mailto:technical@novusbio.com)

**Reviews: 1 Publications: 1**

Protocols, Publications, Related Products, Reviews, Research Tools and Images at:  
[www.novusbio.com/NBP2-15699](http://www.novusbio.com/NBP2-15699)

Updated 9/9/2025 v.20.1

**Earn rewards for product  
reviews and publications.**

Submit a publication at [www.novusbio.com/publications](http://www.novusbio.com/publications)

Submit a review at [www.novusbio.com/reviews/destination/NBP2-15699](http://www.novusbio.com/reviews/destination/NBP2-15699)



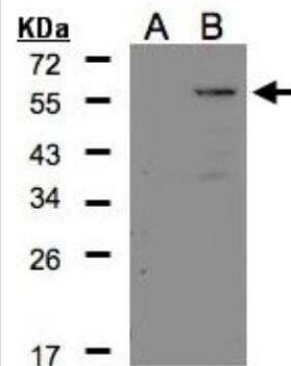
**NBP2-15699****Carboxypeptidase E/CPE Antibody - BSA Free**

<b>Product Information</b>	
<b>Unit Size</b>	0.1 ml
<b>Concentration</b>	Concentrations vary lot to lot. See vial label for concentration. If unlisted please contact technical services.
<b>Storage</b>	Aliquot and store at -20C or -80C. Avoid freeze-thaw cycles.
<b>Clonality</b>	Polyclonal
<b>Preservative</b>	0.01% Thimerosal
<b>Isotype</b>	IgG
<b>Purity</b>	Antigen Affinity-purified
<b>Buffer</b>	0.1M Tris (pH 7), 0.1M Glycine, 10% Glycerol
<b>Target Molecular Weight</b>	53 kDa
<b>Product Description</b>	
<b>Description</b>	Novus Biologicals Rabbit Carboxypeptidase E/CPE Antibody - BSA Free (NBP2-15699) is a polyclonal antibody validated for use in IHC, WB and ICC/IF. Anti-Carboxypeptidase E/CPE Antibody: Cited in 1 publication. All Novus Biologicals antibodies are covered by our 100% guarantee.
<b>Host</b>	Rabbit
<b>Gene ID</b>	1363
<b>Gene Symbol</b>	CPE
<b>Species</b>	Human, Mouse, Rat
<b>Reactivity Notes</b>	Zebrafish (85%), Xenopus laevis (83%). Rat reactivity reported from a verified customer review.
<b>Immunogen</b>	Recombinant protein encompassing a sequence within the center region of human Carboxypeptidase E/CPE. The exact sequence is proprietary.
<b>Product Application Details</b>	
<b>Applications</b>	Western Blot, Immunohistochemistry-Paraffin, Immunocytochemistry/Immunofluorescence, Immunohistochemistry, Immunohistochemistry-Frozen
<b>Recommended Dilutions</b>	Western Blot 1:500-1:10000, Immunohistochemistry 1:100-1:1000, Immunocytochemistry/ Immunofluorescence, Immunohistochemistry-Paraffin 1:100-1:1000, Immunohistochemistry-Frozen
<b>Application Notes</b>	Use in ICC/IF was reported in scientific literature (PMID: 28978054). Immunohistochemistry-Frozen from a verified customer review.

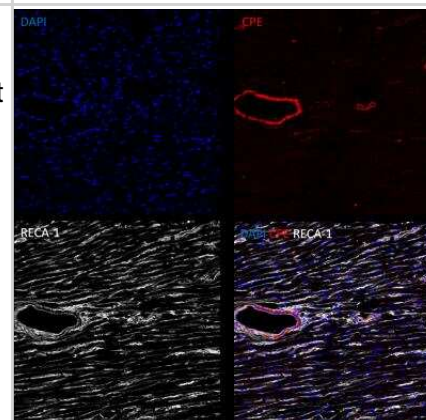


## Images

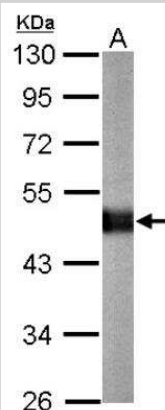
Western Blot: Carboxypeptidase E/CPE Antibody [NBP2-15699] - Analysis of CPE expression in transfected 293T cell line by CPE polyclonal antibody. A: Non-transfected lysate. B: CPE transfected lysate. 12% SDS PAGE gel, diluted at 1:500.



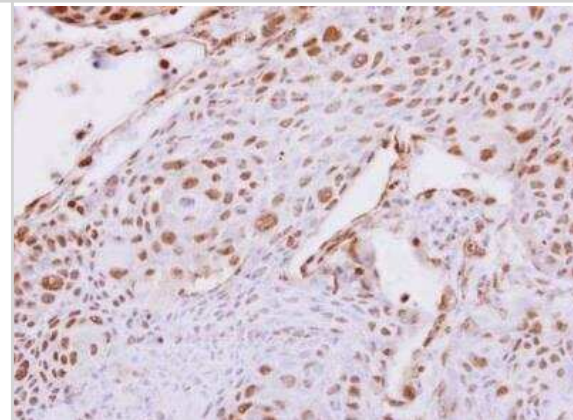
Immunohistochemistry-Frozen: Carboxypeptidase E/CPE Antibody [NBP2-15699] - Representative dual-immunofluorescence staining of rat endothelial cell antigen-1 (RECA-1) and carboxypeptidase E (CPE) in rat heart frozen sections. Image from verified customer review.



Western Blot: Carboxypeptidase E/CPE Antibody [NBP2-15699] - Sample (20 ug of whole cell lysate) A: mouse brain 10% SDS PAGE gel, diluted at 1:10000.



Immunohistochemistry-Paraffin: Carboxypeptidase E/CPE Antibody [NBP2-15699] - Human breast cancer. Carboxypeptidase E antibody [N2C2], Internal dilution: 1:500. Antigen Retrieval: Trilogy™ (EDTA based, pH 8.0) buffer, 15min



## Publications

Iлина Elena I, Armento Angela, Sanchez Leticia Garea et al. Effects of soluble CPE on glioma cell migration are associated with mTOR activation and enhanced glucose flux. Oncotarget 2017-06-27 [PMID: 28978054] (ICC, Human)



### **Novus Biologicals USA**

10730 E. Briarwood Avenue  
Centennial, CO 80112  
USA  
Phone: 303.730.1950  
Toll Free: 1.888.506.6887  
Fax: 303.730.1966  
nb-customerservice@bio-techne.com

### **Bio-Techne Canada**

21 Canmotor Ave  
Toronto, ON M8Z 4E6  
Canada  
Phone: 905.827.6400  
Toll Free: 855.668.8722  
Fax: 905.827.6402  
canada.inquires@bio-techne.com

### **Bio-Techne Ltd**

19 Barton Lane  
Abingdon Science Park  
Abingdon, OX14 3NB, United Kingdom  
Phone: (44) (0) 1235 529449  
Free Phone: 0800 37 34 15  
Fax: (44) (0) 1235 533420  
info.EMEA@bio-techne.com

### **General Contact Information**

www.novusbio.com  
Technical Support: nb-technical@bio-techne.com  
Orders: nb-customerservice@bio-techne.com  
General: novus@novusbio.com

### **Products Related to NBP2-15699**

---

HAF008	Goat anti-Rabbit IgG Secondary Antibody [HRP]
NB7160	Goat anti-Rabbit IgG (H+L) Secondary Antibody [HRP]
NBP2-24891	Rabbit IgG Isotype Control
NBP2-33853PEP	Carboxypeptidase E/CPE Recombinant Protein Antigen

---

### **Limitations**

This product is for research use only and is not approved for use in humans or in clinical diagnosis. Primary Antibodies are guaranteed for 1 year from date of receipt.

For more information on our 100% guarantee, please visit [www.novusbio.com/guarantee](http://www.novusbio.com/guarantee)

Earn gift cards/discounts by submitting a review: [www.novusbio.com/reviews/submit/NBP2-15699](http://www.novusbio.com/reviews/submit/NBP2-15699)

Earn gift cards/discounts by submitting a publication using this product:  
[www.novusbio.com/publications](http://www.novusbio.com/publications)

