

# Product Datasheet

## Carboxypeptidase B1/CPB1 Antibody NBP2-15698

Unit Size: 0.1 ml

Aliquot and store at -20C or -80C. Avoid freeze-thaw cycles.

[www.novusbio.com](http://www.novusbio.com)



[technical@novusbio.com](mailto:technical@novusbio.com)

Protocols, Publications, Related Products, Reviews, Research Tools and Images at:  
[www.novusbio.com/NBP2-15698](http://www.novusbio.com/NBP2-15698)

Updated 9/8/2020 v.20.1

Earn rewards for product  
reviews and publications.

Submit a publication at [www.novusbio.com/publications](http://www.novusbio.com/publications)

Submit a review at [www.novusbio.com/reviews/destination/NBP2-15698](http://www.novusbio.com/reviews/destination/NBP2-15698)



**NBP2-15698****Carboxypeptidase B1/CPB1 Antibody**

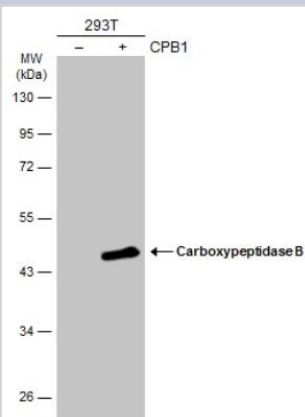
<b>Product Information</b>	
<b>Unit Size</b>	0.1 ml
<b>Concentration</b>	Concentrations vary lot to lot. See vial label for concentration. If unlisted please contact technical services.
<b>Storage</b>	Aliquot and store at -20C or -80C. Avoid freeze-thaw cycles.
<b>Clonality</b>	Polyclonal
<b>Preservative</b>	0.025% Proclin 300
<b>Isotype</b>	IgG
<b>Purity</b>	Immunogen affinity purified
<b>Buffer</b>	PBS (pH 7), 20% Glycerol
<b>Target Molecular Weight</b>	47 kDa

<b>Product Description</b>	
<b>Host</b>	Rabbit
<b>Gene ID</b>	1360
<b>Gene Symbol</b>	CPB1
<b>Species</b>	Human, Mouse, Rat
<b>Reactivity Notes</b>	Immunogen displays the following percentage of sequence identity for non-tested species: Canine (86%), Porcine (85%), Bovine (83%).
<b>Immunogen</b>	Recombinant protein encompassing a sequence within the center region of human Carboxypeptidase B. The exact sequence is proprietary.

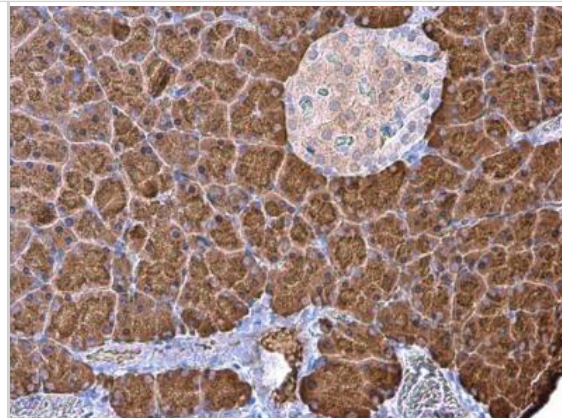
<b>Product Application Details</b>	
<b>Applications</b>	Western Blot, Immunohistochemistry, Immunohistochemistry-Paraffin
<b>Recommended Dilutions</b>	Western Blot 1:500-1:50000, Immunohistochemistry 1:100-1:1000, Immunohistochemistry-Paraffin 1:100-1:1000

**Images**

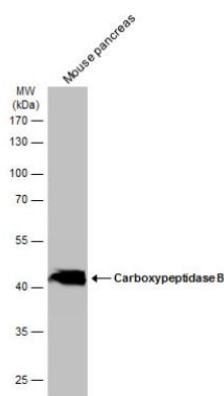
Western Blot: Carboxypeptidase B1/CPB1 Antibody [NBP2-15698] - Non-transfected (-) and transfected (+) 293T whole cell extracts (30 ug) were separated by 10% SDS-PAGE, and the membrane was blotted with Carboxypeptidase B antibody diluted at 1:5000. HRP-conjugated anti-rabbit IgG antibody was used to detect the primary antibody.



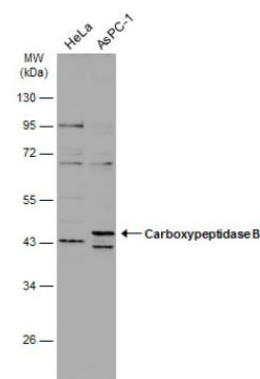
Immunohistochemistry-Paraffin: Carboxypeptidase B1/CPB1 Antibody [NBP2-15698] - Paraffin-embedded rat pancreas. Carboxypeptidase B antibody [N3C3] diluted at 1:1000.



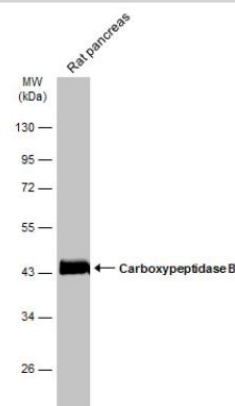
Western Blot: Carboxypeptidase B1/CPB1 Antibody [NBP2-15698] - Mouse tissue extract (50 ug) was separated by 10% SDS-PAGE, and the membrane was blotted with Carboxypeptidase B antibody [N3C3] diluted at 1:50000. The HRP-conjugated anti-rabbit IgG antibody (NBP2-19301) was used to detect the primary antibody.



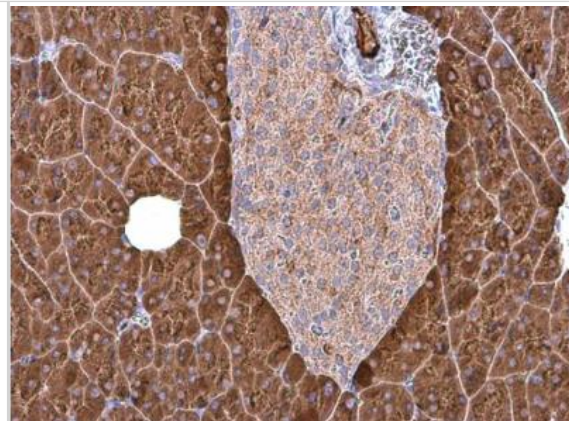
Western Blot: Carboxypeptidase B1/CPB1 Antibody [NBP2-15698] - Various whole cell extracts (30 ug) were separated by 10% SDS-PAGE, and the membrane was blotted with Carboxypeptidase B antibody [N3C3] diluted at 1:1000. The HRP-conjugated anti-rabbit IgG antibody (NBP2-19301) was used to detect the primary antibody.



Western Blot: Carboxypeptidase B1/CPB1 Antibody [NBP2-15698] - Rat tissue extract (50 ug) was separated by 10% SDS-PAGE, and the membrane was blotted with Carboxypeptidase B antibody [N3C3] diluted at 1:50000. The HRP-conjugated anti-rabbit IgG antibody (NBP2-19301) was used to detect the primary antibody.



Immunohistochemistry-Paraffin: Carboxypeptidase B1/CPB1 Antibody [NBP2-15698] - Paraffin-embedded mouse pancreas. Carboxypeptidase B antibody [N3C3] diluted at 1:1000.





### **Novus Biologicals USA**

10730 E. Briarwood Avenue  
Centennial, CO 80112  
USA

Phone: 303.730.1950  
Toll Free: 1.888.506.6887  
Fax: 303.730.1966  
novus@novusbio.com

### **Bio-Techne Canada**

21 Canmotor Ave  
Toronto, ON M8Z 4E6  
Canada

Phone: 905.827.6400  
Toll Free: 855.668.8722  
Fax: 905.827.6402  
canada.inquires@bio-techne.com

### **Bio-Techne Ltd**

19 Barton Lane  
Abingdon Science Park  
Abingdon, OX14 3NB, United Kingdom

Phone: (44) (0) 1235 529449  
Free Phone: 0800 37 34 15  
Fax: (44) (0) 1235 533420  
info.EMEA@bio-techne.com

### **General Contact Information**

www.novusbio.com  
Technical Support: technical@novusbio.com  
Orders: orders@novusbio.com  
General: novus@novusbio.com

### **Products Related to NBP2-15698**

---

HAF008	Goat anti-Rabbit IgG Secondary Antibody [HRP (Horseradish Peroxidase)]
NB7156	Goat anti-Rabbit IgG (H+L) Secondary Antibody
NBP2-24891	Rabbit IgG Isotype Control
NBP2-38549PEP	Carboxypeptidase B1/CPB1 Recombinant Protein Antigen

---

### **Limitations**

This product is for research use only and is not approved for use in humans or in clinical diagnosis. Primary Antibodies are guaranteed for 1 year from date of receipt.

For more information on our 100% guarantee, please visit [www.novusbio.com/guarantee](http://www.novusbio.com/guarantee)

Earn gift cards/discounts by submitting a review: [www.novusbio.com/reviews/submit/NBP2-15698](http://www.novusbio.com/reviews/submit/NBP2-15698)

Earn gift cards/discounts by submitting a publication using this product:  
[www.novusbio.com/publications](http://www.novusbio.com/publications)

