

Product Datasheet

BIN1 Antibody - BSA Free NBP2-15587

Unit Size: 0.1 ml

Aliquot and store at -20C or -80C. Avoid freeze-thaw cycles.

www.novusbio.com



technical@novusbio.com

Protocols, Publications, Related Products, Reviews, Research Tools and Images at:
www.novusbio.com/NBP2-15587

Updated 2/23/2025 v.20.1

**Earn rewards for product
reviews and publications.**

Submit a publication at www.novusbio.com/publications

Submit a review at www.novusbio.com/reviews/destination/NBP2-15587



NBP2-15587

BIN1 Antibody - BSA Free

Product Information

Unit Size	0.1 ml
Concentration	Concentrations vary lot to lot. See vial label for concentration. If unlisted please contact technical services.
Storage	Aliquot and store at -20C or -80C. Avoid freeze-thaw cycles.
Clonality	Polyclonal
Preservative	0.025% Proclin 300
Isotype	IgG
Purity	Antigen Affinity-purified
Buffer	PBS, 20% Glycerol
Target Molecular Weight	65 kDa

Product Description

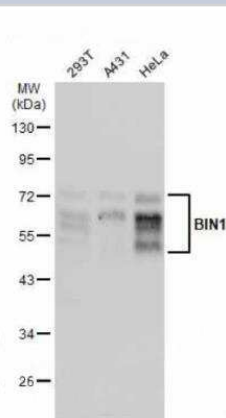
Host	Rabbit
Gene ID	274
Gene Symbol	BIN1
Species	Human, Mouse
Reactivity Notes	Immunogen displays the following percentage of sequence identity for non-tested species: <i>Xenopus laevis</i> (80%), Chicken (81%).
Immunogen	Recombinant protein encompassing a sequence within the center region of human BIN1. The exact sequence is proprietary.

Product Application Details

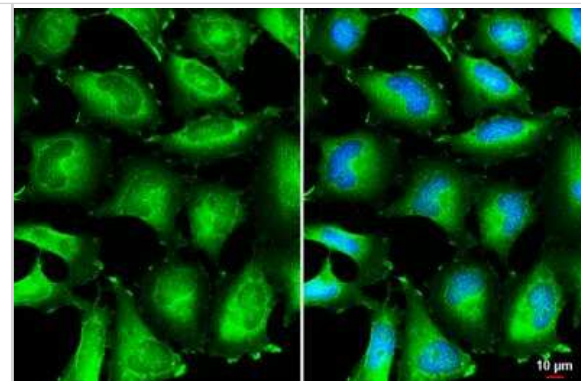
Applications	Western Blot, Immunohistochemistry-Paraffin, Immunocytochemistry/Immunofluorescence, Immunohistochemistry
Recommended Dilutions	Western Blot 1:500-1:3000, Immunohistochemistry 1:100-1:1000, Immunocytochemistry/ Immunofluorescence 1:100-1:1000, Immunohistochemistry-Paraffin 1:100-1:1000

Images

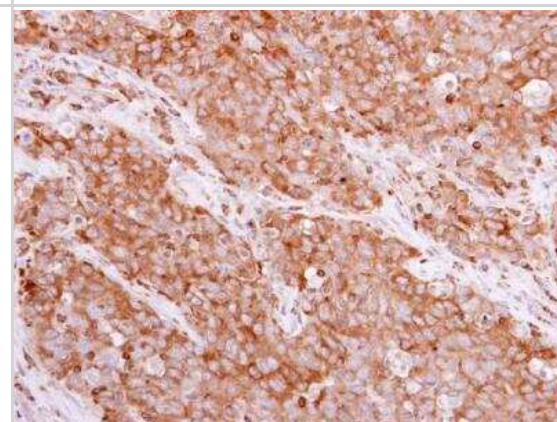
Western Blot: BIN1 Antibody [NBP2-15587] - Various whole cell extracts (30 ug) were separated by 10% SDS-PAGE, and the membranes were blotted with BIN1 antibody diluted at 1:1000. HRP-conjugated anti-rabbit IgG antibody was used to detect the primary antibody.



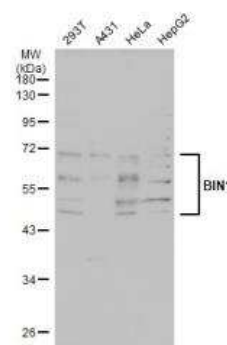
Immunocytochemistry/Immunofluorescence: BIN1 Antibody [NBP2-15587] - BIN1 antibody detects BIN1 protein at cytoplasm by immunofluorescent analysis. Sample: HeLa cells were fixed in 4% paraformaldehyde at RT for 15 min. Green: BIN1 stained by BIN1 antibody diluted at 1:500. Blue: Fluoroshield with DAPI. Scale bar= 10 μ m.



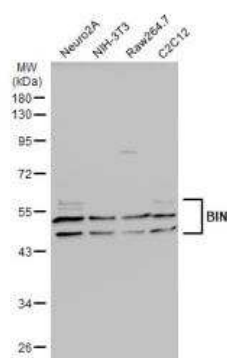
Immunohistochemistry-Paraffin: BIN1 Antibody [NBP2-15587] - BIN1 antibody detects BIN1 protein at cytoplasm in human papillary adenocarcinoma by immunohistochemical analysis. Sample: Paraffin-embedded human papillary adenocarcinoma. BIN1 antibody diluted at 1:500.



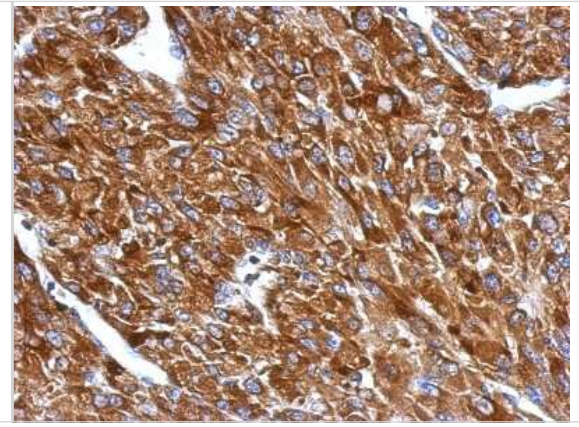
Western Blot: BIN1 Antibody [NBP2-15587] - Various whole cell extracts (30 μ g) were separated by 10% SDS-PAGE, and the membrane was blotted with BIN1 antibody diluted at 1:1000. HRP-conjugated anti-rabbit IgG antibody was used to detect the primary antibody.



Western Blot: BIN1 Antibody [NBP2-15587] - Various whole cell extracts (30 μ g) were separated by 10% SDS-PAGE, and the membrane was blotted with BIN1 antibody diluted at 1:2000. HRP-conjugated anti-rabbit IgG antibody was used to detect the primary antibody.



Immunohistochemistry-Paraffin: BIN1 Antibody [NBP2-15587] -
Immunohistochemical analysis of paraffin-embedded U87 xenograft,
using antibody at 1:500 dilution.





Novus Biologicals USA

10730 E. Briarwood Avenue
Centennial, CO 80112
USA
Phone: 303.730.1950
Toll Free: 1.888.506.6887
Fax: 303.730.1966
nb-customerservice@bio-techne.com

Bio-Techne Canada

21 Canmotor Ave
Toronto, ON M8Z 4E6
Canada
Phone: 905.827.6400
Toll Free: 855.668.8722
Fax: 905.827.6402
canada.inquires@bio-techne.com

Bio-Techne Ltd

19 Barton Lane
Abingdon Science Park
Abingdon, OX14 3NB, United Kingdom
Phone: (44) (0) 1235 529449
Free Phone: 0800 37 34 15
Fax: (44) (0) 1235 533420
info.EMEA@bio-techne.com

General Contact Information

www.novusbio.com
Technical Support: nb-technical@bio-techne.com
Orders: nb-customerservice@bio-techne.com
General: novus@novusbio.com

Products Related to NBP2-15587

HAF008	Goat anti-Rabbit IgG Secondary Antibody [HRP]
NB7160	Goat anti-Rabbit IgG (H+L) Secondary Antibody [HRP]
NBP2-24891	Rabbit IgG Isotype Control
NBP1-45322-0.1mg	Recombinant Human BIN1 His Protein

Limitations

This product is for research use only and is not approved for use in humans or in clinical diagnosis. Primary Antibodies are guaranteed for 1 year from date of receipt.

For more information on our 100% guarantee, please visit www.novusbio.com/guarantee

Earn gift cards/discounts by submitting a review: www.novusbio.com/reviews/submit/NBP2-15587

Earn gift cards/discounts by submitting a publication using this product:
www.novusbio.com/publications

