

Product Datasheet

ATP6V1E1 Antibody NBP2-15520

Unit Size: 0.1 ml

Aliquot and store at -20C or -80C. Avoid freeze-thaw cycles.

www.novusbio.com



technical@novusbio.com

Publications: 1

Protocols, Publications, Related Products, Reviews, Research Tools and Images at:
www.novusbio.com/NBP2-15520

Updated 10/23/2024 v.20.1

Earn rewards for product
reviews and publications.

Submit a publication at www.novusbio.com/publications

Submit a review at www.novusbio.com/reviews/destination/NBP2-15520



NBP2-15520

ATP6V1E1 Antibody

Product Information

Unit Size	0.1 ml
Concentration	Concentrations vary lot to lot. See vial label for concentration. If unlisted please contact technical services.
Storage	Aliquot and store at -20C or -80C. Avoid freeze-thaw cycles.
Clonality	Polyclonal
Preservative	0.025% Proclin 300
Isotype	IgG
Purity	Antigen Affinity-purified
Buffer	PBS (pH 7), 20% Glycerol
Target Molecular Weight	26 kDa

Product Description

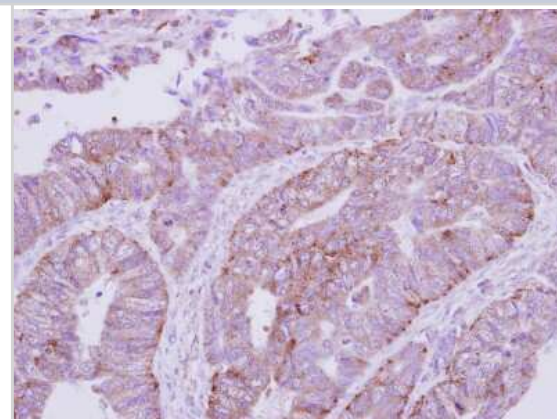
Host	Rabbit
Gene ID	529
Gene Symbol	ATP6V1E1
Species	Human, Mouse, Rat
Reactivity Notes	Opossum reactivity reported in scientific literature (PMID: 28720662).
Immunogen	Recombinant protein encompassing a sequence within the center region of human ATP6V1E1. The exact sequence is proprietary.

Product Application Details

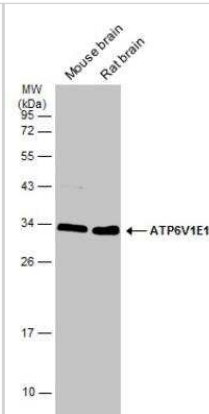
Applications	Western Blot, Immunocytochemistry/ Immunofluorescence, Immunohistochemistry, Immunohistochemistry-Paraffin
Recommended Dilutions	Western Blot 1:500-1:3000, Immunohistochemistry 10 - 1:500, Immunocytochemistry/ Immunofluorescence 1:100-1:1000, Immunohistochemistry-Paraffin 1:100-1:1000

Images

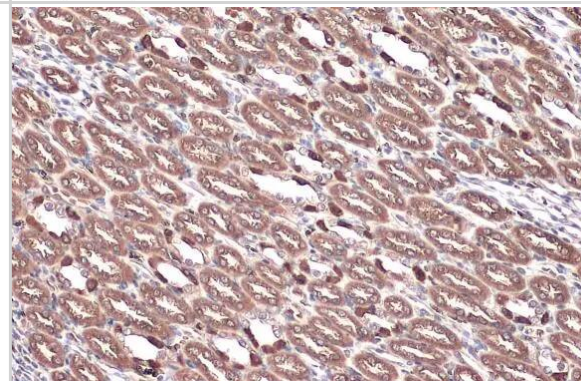
Immunohistochemistry-Paraffin: ATP6V1E1 Antibody [NBP2-15520] - Immunohistochemical analysis of paraffin-embedded Colon ca, using antibody at 1:250 dilution.



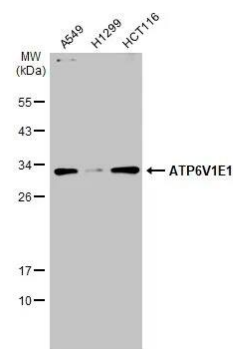
Western Blot: ATP6V1E1 Antibody [NBP2-15520] - Various tissue extracts (50 ug) were separated by 12% SDS-PAGE, and the membrane was blotted with ATP6V1E1 antibody diluted at 1:1000. HRP-conjugated anti-rabbit IgG antibody was used to detect the primary antibody.



Immunohistochemistry-Paraffin: ATP6V1E1 Antibody [NBP2-15520] - ATP6V1E1 antibody detects ATP6V1E1 protein at cell membrane and cytoplasm by immunohistochemical analysis. Sample: Paraffin-embedded mouse kidney. ATP6V1E1 stained by ATP6V1E1 antibody (NBP2-15520) diluted at 1:500. Antigen Retrieval: Citrate buffer, pH 6.0, 15 min

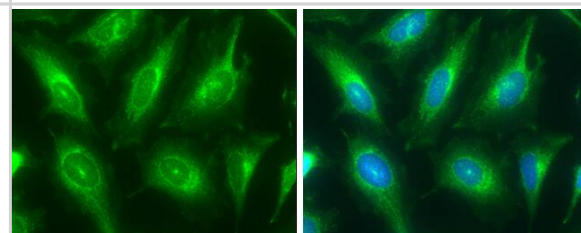


Western Blot: ATP6V1E1 Antibody [NBP2-15520] - Various whole cell extracts (30 ug) were separated by 12% SDS-PAGE, and the membrane was blotted with ATP6V1E1 antibody (NBP2-15520) diluted at 1:3000. The HRP-conjugated anti-rabbit IgG antibody was used to detect the primary antibody.

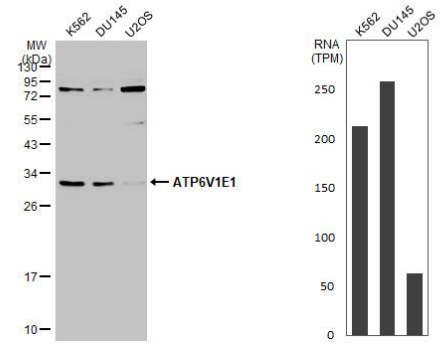


Immunocytochemistry/ Immunofluorescence: ATP6V1E1 Antibody [NBP2-15520] - ATP6V1E1 antibody detects ATP6V1E1 protein at cytoplasm by immunofluorescent analysis.

Sample: HeLa cells were fixed in ice-cold MeOH for 5 min.
Green: ATP6V1E1 protein stained by ATP6V1E1 antibody (NBP2-15520) diluted at 1:200.
Blue: Hoechst 33342 staining.



Western Blot: ATP6V1E1 Antibody [NBP2-15520] - Various whole cell extracts (30 ug) were separated by 12% SDS-PAGE, and the membrane was blotted with ATP6V1E1 antibody diluted at 1:3000. The HRP-conjugated anti-rabbit IgG antibody was used to detect the primary antibody. Corresponding RNA expression data for the same cell lines are based on Human Protein Atlas program.



Publications

Long KR, Shipman KE, Rbaibi Y et al. Proximal tubule apical endocytosis is modulated by fluid shear stress via an mTOR-dependent pathway Mol Biol Cell. 2017-09-14 [PMID: 28720662] (WB, Opossum)



Novus Biologicals USA

10730 E. Briarwood Avenue
Centennial, CO 80112
USA
Phone: 303.730.1950
Toll Free: 1.888.506.6887
Fax: 303.730.1966
nb-customerservice@bio-techne.com

Bio-Techne Canada

21 Canmotor Ave
Toronto, ON M8Z 4E6
Canada
Phone: 905.827.6400
Toll Free: 855.668.8722
Fax: 905.827.6402
canada.inquires@bio-techne.com

Bio-Techne Ltd

19 Barton Lane
Abingdon Science Park
Abingdon, OX14 3NB, United Kingdom
Phone: (44) (0) 1235 529449
Free Phone: 0800 37 34 15
Fax: (44) (0) 1235 533420
info.EMEA@bio-techne.com

General Contact Information

www.novusbio.com
Technical Support: nb-technical@bio-techne.com
Orders: nb-customerservice@bio-techne.com
General: novus@novusbio.com

Products Related to NBP2-15520

HAF008	Goat anti-Rabbit IgG Secondary Antibody [HRP]
NB7160	Goat anti-Rabbit IgG (H+L) Secondary Antibody [HRP]
NBP2-24891	Rabbit IgG Isotype Control
NBP2-14335PEP	ATP6V1E1 Recombinant Protein Antigen

Limitations

This product is for research use only and is not approved for use in humans or in clinical diagnosis. Primary Antibodies are guaranteed for 1 year from date of receipt.

For more information on our 100% guarantee, please visit www.novusbio.com/guarantee

Earn gift cards/discounts by submitting a review: www.novusbio.com/reviews/submit/NBP2-15520

Earn gift cards/discounts by submitting a publication using this product:
www.novusbio.com/publications

