

# Product Datasheet

## **Bcl-2 Antibody (100/D5) NBP2-15200-0.1mg**

Unit Size: 0.1 mg

Store at 4C.

[www.novusbio.com](http://www.novusbio.com)



[technical@novusbio.com](mailto:technical@novusbio.com)

**Publications: 11**

Protocols, Publications, Related Products, Reviews, Research Tools and Images at:  
[www.novusbio.com/NBP2-15200](http://www.novusbio.com/NBP2-15200)

Updated 8/21/2025 v.20.1

**Earn rewards for product  
reviews and publications.**

Submit a publication at [www.novusbio.com/publications](http://www.novusbio.com/publications)

Submit a review at [www.novusbio.com/reviews/destination/NBP2-15200](http://www.novusbio.com/reviews/destination/NBP2-15200)



**NBP2-15200-0.1mg**

Bcl-2 Antibody (100/D5)

Product Information	
Unit Size	0.1 mg
Concentration	0.2 mg/ml
Storage	Store at 4C.
Clonality	Monoclonal
Clone	100/D5
Preservative	0.05% Sodium Azide
Isotype	IgG1 Kappa
Purity	Protein A or G purified
Buffer	10 mM PBS with 0.05% BSA

Product Description	
Description	200ug/ml of antibody purified from Bioreactor Concentrate by Protein A or G. Prepared in 10 mM PBS with 0.05% BSA & 0.05% azide. Also available WITHOUT BSA & azide at 1.0 mg/ml. (NBP2-33315)  Antibody with azide - store at 2 to 8C. Antibody without azide - store at -20 to -80 C.
Host	Mouse
Gene ID	596
Gene Symbol	BCL2
Species	Human, Mouse (Negative), Rat (Negative)
Reactivity Notes	Does not react with Mouse or Rat.
Marker	Apoptosis & Follicular Lymphoma Marker
Specificity/Sensitivity	This antibody recognizes a protein of 25-26kDa, identified as the Bcl-2 alpha oncoprotein. It shows no cross-reaction with Bcl-x or Bax protein. Expression of Bcl-2 alpha oncoprotein inhibits the programmed cell death (apoptosis). In most follicular lymphomas, neoplastic germinal centers express high levels of Bcl-2 alpha protein, whereas the normal or hyperplastic germinal centers are negative. Consequently, this antibody is valuable when distinguishing between reactive and neoplastic follicular proliferation in lymph node biopsies. It may also be used in distinguishing between those follicular lymphomas that express Bcl-2 protein and the small number in which the neoplastic cells are Bcl-2 negative.
Immunogen	A synthetic peptide, aa41-54 (GAAPAPGIFSSQPG-Cys) of human Bcl-2 protein. (Uniprot: P10415 )

Product Application Details	
Applications	Western Blot, Immunohistochemistry-Paraffin, Flow Cytometry, Flow (Intracellular), Immunocytochemistry/ Immunofluorescence, Immunohistochemistry, Immunohistochemistry-Frozen, Immunoprecipitation, Multiplex Immunofluorescence
Recommended Dilutions	Western Blot 1-2 ug/ml, Flow Cytometry 1-2 ug/million cells, Immunohistochemistry, Immunocytochemistry/ Immunofluorescence 1-2 ug/ml, Immunoprecipitation, Immunohistochemistry-Paraffin 1-2 ug/ml, Immunohistochemistry-Frozen 0.5-1ug/ml, Flow (Intracellular), Multiplex Immunofluorescence 1:500

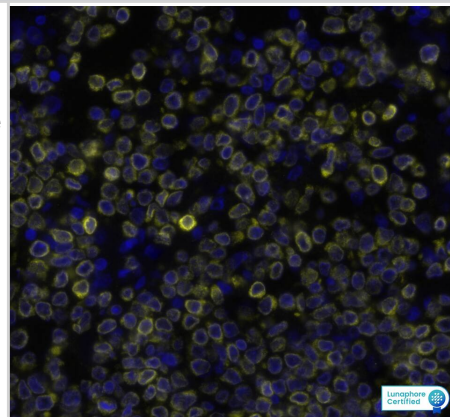


**Application Notes**

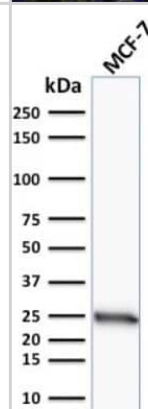
Use in IP reported in scientific literature (PMID:35304128)  
 Immunohistochemistry (Formalin-fixed): 1-2ug/ml for 30 minutes at RT. Staining of formalin-fixed tissues requires heating tissue sections in 10mM Tris with 1mM EDTA, pH 9.0, for 45 min at 95C followed by cooling at RT for 20 minutes. Optimal dilution for a specific application should be determined..

**Images**

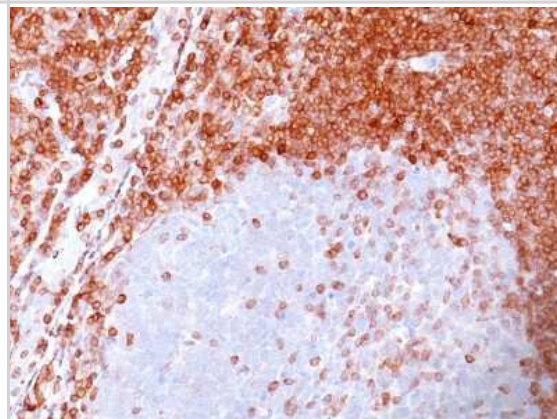
BCL2 was detected in immersion fixed paraffin-embedded sections of human Non-Hodgkin's Lymphoma using Mouse Anti-Human BCL2, Monoclonal Antibody (Catalog #NBP2-15200) at a 1:500 dilution at 37 ° Celsius for 4 minutes. Before incubation with the primary antibody, tissue underwent an all-in-one dewaxing and antigen retrieval preprocessing using PreTreatment Module (PT Module) and Dewax and HIER Buffer H (pH 9; EpreDia Catalog # TA-999-DHBH). Tissue was stained using the Alexa Fluor™ 647 Goat anti-Mouse IgG Secondary Antibody at 1:200 at 37 ° Celsius for 2 minutes. (Yellow; Lunaphore Catalog # [DR647MS](#)) and counterstained with DAPI (blue; Lunaphore Catalog # [DR100](#)). Specific staining was localized to the membrane. Protocol available in [COMET™ Panel Builder](#).



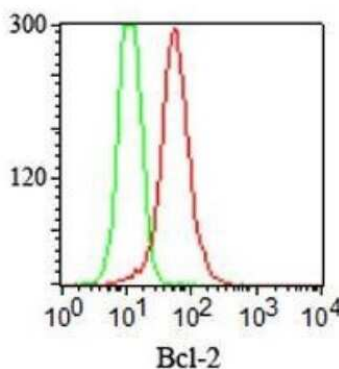
Western Blot: Bcl-2 Antibody (100/D5) [NBP2-15200] - Western Blot Analysis of human MCF-7 cell lysate using Bcl-2 Antibody (100/D5).



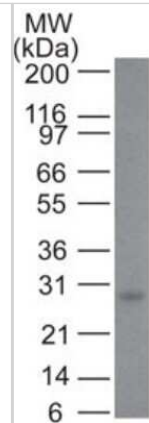
Immunohistochemistry-Paraffin: Bcl-2 Antibody (100/D5) [NBP2-15200] - Formalin-paraffin non-Hodgkin's lymphoma stained with Bcl-2 Ab (100/D5). Note nuclear membrane & cytoplasmic staining.



Flow Cytometry: Bcl-2 Antibody (100/D5) [NBP2-15200] - Intracellular staining of Bcl-2 in fixed and permeabilized Jurkat cells using Bcl-2 antibody (red) and isotype control (green) at 0.5 ug/10<sup>6</sup> cells.



Western Blot: Bcl-2 Antibody (100/D5) [NBP2-15200] - analysis of Bcl-2 in human skin using Bcl-2 antibody at 2 ug/ml.



## Publications

Sevinc SK, Karadeniz M, Sen A et al. Apoptotic and antiproliferative effects of *Urtica dioica* L. extract on K562 chronic myeloid leukemia cell line Indian Journal of Experimental Biology 2023-11-01 (WB)

Tian D, You X, Ye J et al. BMSCs overexpressing hBcl2 can resist myelin-induced apoptosis and promote repair after spinal cord injury in rats Research Square 2023-08-28 (IHC, ICC/IF, WB, Rat, Mouse)

Details:

WB dilution 1:100; ICC/IF dilution 1:100; IHC dilution 1:100

Kocyigit Sevinc S, Karadeniz M, Sen A et al. Biological Effects of *Urtica Dioica* Extract on K562 Chronic Myeloid Leukemia Cell Line SSRN Electronic Journal 2022-10-29 (WB, Human)

Mandic M, Misirkic Marjanovic M, Vucicevic L et al. MAP kinase-dependent autophagy controls phorbol myristate acetate-induced macrophage differentiation of HL-60 leukemia cells Life sciences 2022-05-15 [PMID: 35304128] (IP, Human)

Mega Tiber P, Kocyigit Sevinc S, Kilinc O, Orun O Biological effects of whole *Z.Officinale* extract on chronic myeloid leukemia cell line K562. Gene. 2019-04-15 [PMID: 30684525] (WB, Human)

Details:

Citation using the Azide free version of this antibody.

Pradhan N, Pratheek BM, Garai A et al. Induction of apoptosis by Fe(salen)Cl through caspase-dependent pathway specifically in tumor cells. Cell Biol. Int. 2014-05-07 [PMID: 24804954] (Flow Cytometry Control, Human)

Details:

Mouse splenocytes, human PBMC, Jurkat, EL4: Fig 5. GADPH was detected at ~36 kDa.

Kaur P, Kallakury BS, Sheehan CE et al. Survivin and Bcl-2 expression in prostatic adenocarcinomas. Arch Pathol Lab Med. 2004-01-01 [PMID: 14692814] (IHC-P)

Details:

IHC (paraffin): Prostate adenocarcinoma, Figs 2,3.

Kren L, Brazdil J, Hermanova M et al. Prognostic significance of anti-apoptosis proteins survivin and bcl-2 in non-small cell lung carcinomas: a clinicopathologic study of 102 cases. Appl Immunohistochem Mol Morphol. 2004-03-01 [PMID: 15163019] (IHC-P)

Details:

IHC (paraffin): lung cancer.

Moschovi M, Koulouki E, Stefanaki K et al. Prognostic significance of angiogenesis in relation to Ki-67, p-53, p-27, and bcl-2 expression in embryonal tumors. Pediatr Neurosurg. 2011-01-01 [PMID: 22309998] (IHC-P)

Details:

IHC (paraffin): Embryonal tumors, Table 1.

Tralongo V, Becchina G, Nagar C et al. Primary follicular lymphoma of the epididymis positive for t(14;18) (q32;q21)/IGH-BCL2 and negative for BCL2 protein expression: a case report. J Med Case Rep. 2012-01-18 [PMID: 22257663] (IHC-P)

Pezzella F, Tse AG, Cordell JL et al. Expression of the bcl-2 oncogene protein is not specific for the 14;18 chromosomal translocation. Am J Pathol. 1990-08-01 [PMID: 2201196] (ICC/IF, IHC-Fr, WB, IHC-P)

Details:

WB: Fig 1 (normal human spleen), the Bcl-2 alpha isoform was detected in both reducing and non-reducing conditions. IHC (frozen)/ IHC (paraffin)/ IF/ICC: Various human cell types and tissues: Figs 2,7 and Tables 1-3. See publication for specific staining



### **Novus Biologicals USA**

10730 E. Briarwood Avenue  
Centennial, CO 80112  
USA  
Phone: 303.730.1950  
Toll Free: 1.888.506.6887  
Fax: 303.730.1966  
nb-customerservice@bio-techne.com

### **Bio-Techne Canada**

21 Canmotor Ave  
Toronto, ON M8Z 4E6  
Canada  
Phone: 905.827.6400  
Toll Free: 855.668.8722  
Fax: 905.827.6402  
canada.inquires@bio-techne.com

### **Bio-Techne Ltd**

19 Barton Lane  
Abingdon Science Park  
Abingdon, OX14 3NB, United Kingdom  
Phone: (44) (0) 1235 529449  
Free Phone: 0800 37 34 15  
Fax: (44) (0) 1235 533420  
info.EMEA@bio-techne.com

### **General Contact Information**

[www.novusbio.com](http://www.novusbio.com)  
Technical Support: nb-technical@bio-techne.com  
Orders: nb-customerservice@bio-techne.com  
General: novus@novusbio.com

### **Products Related to NBP2-15200-0.1mg**

HAF007	Goat anti-Mouse IgG Secondary Antibody [HRP]
NB720-B	Rabbit anti-Mouse IgG (H+L) Secondary Antibody [Biotin]
NBP1-43319-0.5mg	Mouse IgG1 Kappa Isotype Control (P3.6.2.8.1)
NBP2-34889-100ug	Recombinant Human Bcl-2 Protein

### **Limitations**

This product is for research use only and is not approved for use in humans or in clinical diagnosis. Primary Antibodies are guaranteed for 1 year from date of receipt.

For more information on our 100% guarantee, please visit [www.novusbio.com/guarantee](http://www.novusbio.com/guarantee)

Earn gift cards/discounts by submitting a review: [www.novusbio.com/reviews/submit/NBP2-15200](http://www.novusbio.com/reviews/submit/NBP2-15200)

Earn gift cards/discounts by submitting a publication using this product:  
[www.novusbio.com/publications](http://www.novusbio.com/publications)

