

Product Datasheet

TET1 Antibody (1462) NBP2-15135

Unit Size: 0.1 ml

Aliquot and store at -20C or -80C. Avoid freeze-thaw cycles.

www.novusbio.com



technical@novusbio.com

Publications: 3

Protocols, Publications, Related Products, Reviews, Research Tools and Images at:
www.novusbio.com/NBP2-15135

Updated 10/23/2024 v.20.1

Earn rewards for product
reviews and publications.

Submit a publication at www.novusbio.com/publications

Submit a review at www.novusbio.com/reviews/destination/NBP2-15135



NBP2-15135

TET1 Antibody (1462)

Product Information

Unit Size	0.1 ml
Concentration	Concentrations vary lot to lot. See vial label for concentration. If unlisted please contact technical services.
Storage	Aliquot and store at -20C or -80C. Avoid freeze-thaw cycles.
Clonality	Monoclonal
Clone	1462
Preservative	No Preservative
Isotype	IgG2b
Purity	Protein G purified
Buffer	PBS
Target Molecular Weight	235 kDa

Product Description

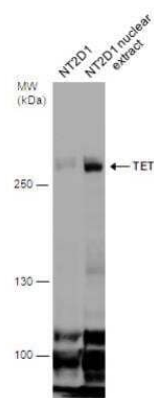
Host	Mouse
Gene ID	80312
Gene Symbol	TET1
Species	Human, Mouse, Rat
Reactivity Notes	Use in Rat reported in scientific literature (PMID:34874218) .
Immunogen	Recombinant protein encompassing a sequence within the center region of human TET1. The exact sequence is proprietary.

Product Application Details

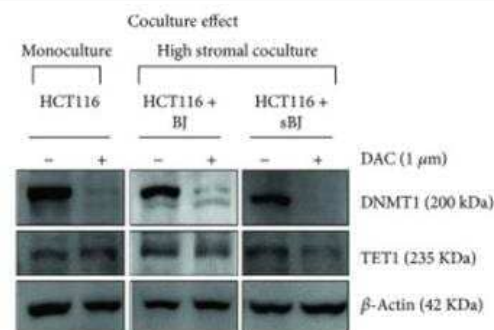
Applications	Western Blot, Immunocytochemistry/ Immunofluorescence, Immunohistochemistry, Immunohistochemistry-Paraffin, Chromatin Immunoprecipitation (ChIP), Knockdown Validated
Recommended Dilutions	Western Blot 1:500-1:3000, Immunohistochemistry 1:100-1:1000, Immunocytochemistry/ Immunofluorescence 1:100-1:1000, Immunohistochemistry-Paraffin 1:100-1:1000, Chromatin Immunoprecipitation (ChIP) 1:10-1:500, Knockdown Validated

Images

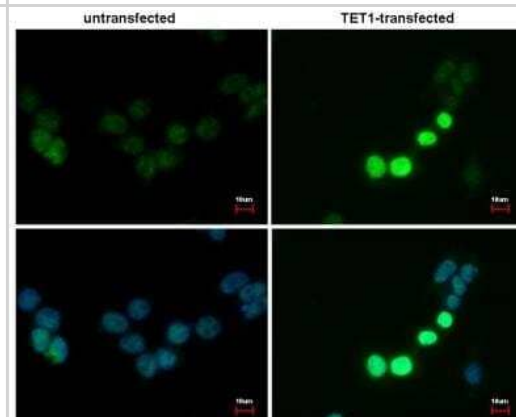
Western Blot: TET1 Antibody (1462) [NBP2-15135] - NT2D1 whole cell and nuclear extracts (30 ug) were separated by 5% SDS-PAGE, and the membrane was blotted with TET1 antibody [1462] diluted at 1:500.



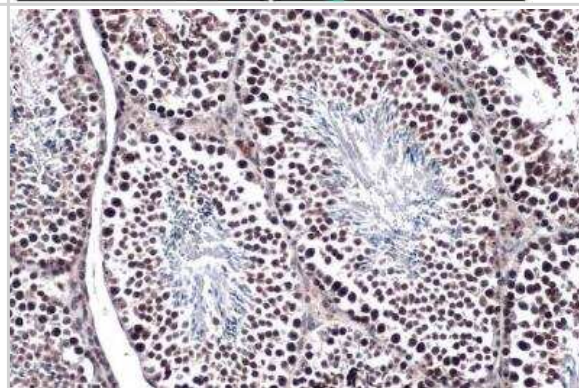
Western Blot: TET1 Antibody (1462) [NBP2-15135] - Representative western blots and densitometry analysis of TET1 levels in untreated or DAC-treated (a) HCT116 monocultures and cocultures with normal BJ or sBJ. Image collected and cropped by CiteAb from the following publication (<https://pubmed.ncbi.nlm.nih.gov/30158986>) licensed under a CC-BY license.



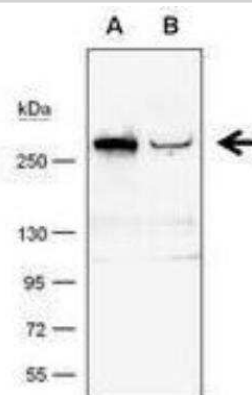
Immunocytochemistry/Immunofluorescence: TET1 Antibody (GT1462) [NBP2-15135] - detects TET1 protein at nucleus by immunofluorescent analysis. Sample: TET1-transfected (right) or untransfected (left) 293T cells were fixed in 4% paraformaldehyde for 15 min. Green: TET1 protein stained by TET1 antibody diluted at 1:1000. Blue: Hoechst 33342 staining. Scale bar = 10 μ m.



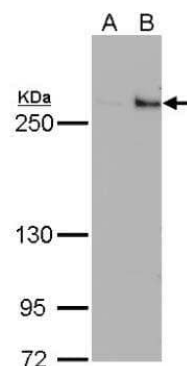
Immunohistochemistry-Paraffin: TET1 Antibody (1462) [NBP2-15135] - Mouse testis. TET1 stained by TET1 antibody [1462] diluted at 1:500. Antigen Retrieval: Citrate buffer, pH 6.0, 15 min.



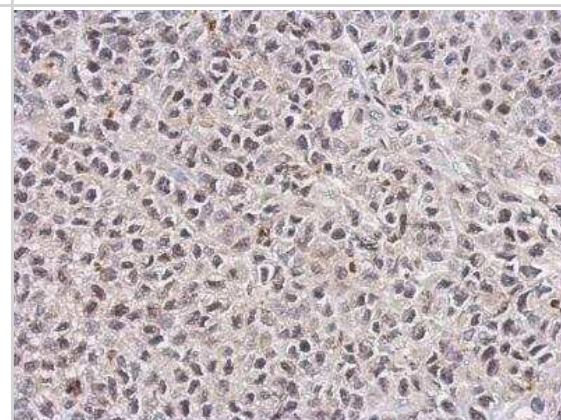
Western Blot: TET1 Antibody (GT1462) [NBP2-15135] - A. 50 μ g whole cell lysate/extract from 293T cells transfected with scramble siRNA. B. 50 μ g whole cell lysate/extract from TET1-knockdown 293T cells.



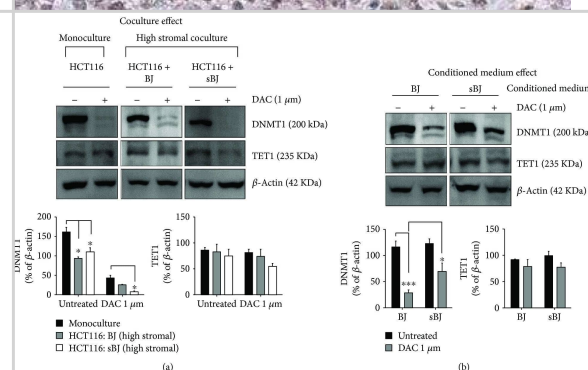
Western Blot: TET1 Antibody (1462) [NBP2-15135] - A. 30 ug 293T whole cell lysate/extract B. 30 ug whole cell lysate/extract of DDDDK-human TET1-transfected 293T cells 5 % SDS-PAGE TET1 antibody dilution: 1:500



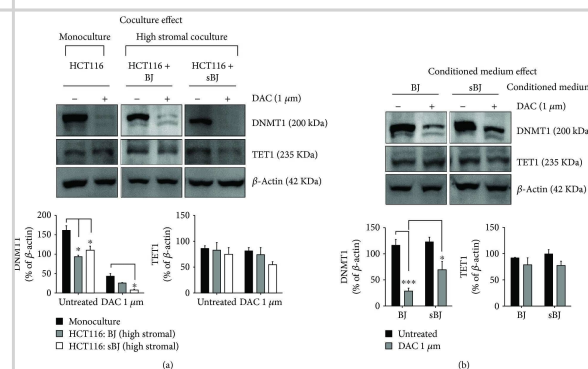
Immunohistochemistry-Paraffin: TET1 Antibody (1462) [NBP2-15135] - HeLa xenograft. TET1 antibody [1462] dilution: 1:100. Antigen Retrieval: Trilogy™ (EDTA based, pH 8.0) buffer, 15min.



Changes in the expression of DNMT1 and TET1. Representative western blots and densitometry analysis of DNMT1 and TET1 levels in untreated or DAC-treated (a) HCT116 monocultures and cocultures with normal BJ or sBJ and (b) HCT116 monocultures grown in conditioned medium from normal BJ or sBJ cells. DNMT1 and TET1 blots in (a) and (b) are taken from different gels. Data are mean \pm SEM, $n = 3$, $\square\square\square p < 0.001$, $\square p < 0.05$.



Western Blot: TET1 Antibody (1462) [NBP2-15135] - Changes in the expression of DNMT1 & TET1. Representative western blots & densitometry analysis of DNMT1 & TET1 levels in untreated or DAC-treated (a) HCT116 monocultures & cocultures with normal BJ or sBJ & (b) HCT116 monocultures grown in conditioned medium from normal BJ or sBJ cells. DNMT1 & TET1 blots in (a) & (b) are taken from different gels. Data are mean \pm SEM, $n = 3$, $\square\square\square p < 0.001$, $\square p < 0.05$. Image collected & cropped by CiteAb from the following publication (<https://pubmed.ncbi.nlm.nih.gov/30158986>), licensed under a CC-BY license. Not internally tested by Novus Biologicals.



Publications

Parik Kakani, Shruti Ganesh Dhamdhere, Deepak Pant, Rushikesh Joshi, Jharna Mishra, Atul Samaiya, Sanjeev Shukla Hypoxia-induced CTCF promotes EMT in breast cancer. Cell reports 2024-06-18 [PMID: 38900639]

Liu X, Cui H The palliative effects of folic acid on retinal microvessels in diabetic retinopathy via regulating the metabolism of DNA methylation and hydroxymethylation Bioengineered 2021-12-01 [PMID: 34874218] (Chemotaxis, Rat)

Agrawal K, Das V, Taborska N et al. Differential Regulation of Methylation-Regulating Enzymes by Senescent Stromal Cells Drives Colorectal Cancer Cell Response to DNA-Demethylating Epi-Drugs Stem Cells Int 2018-08-12 [PMID: 30158986] (WB, Human)





Novus Biologicals USA

10730 E. Briarwood Avenue
Centennial, CO 80112
USA
Phone: 303.730.1950
Toll Free: 1.888.506.6887
Fax: 303.730.1966
nb-customerservice@bio-techne.com

Bio-Techne Canada

21 Canmotor Ave
Toronto, ON M8Z 4E6
Canada
Phone: 905.827.6400
Toll Free: 855.668.8722
Fax: 905.827.6402
canada.inquires@bio-techne.com

Bio-Techne Ltd

19 Barton Lane
Abingdon Science Park
Abingdon, OX14 3NB, United Kingdom
Phone: (44) (0) 1235 529449
Free Phone: 0800 37 34 15
Fax: (44) (0) 1235 533420
info.EMEA@bio-techne.com

General Contact Information

www.novusbio.com
Technical Support: nb-technical@bio-techne.com
Orders: nb-customerservice@bio-techne.com
General: novus@novusbio.com

Products Related to NBP2-15135

HAF007	Goat anti-Mouse IgG Secondary Antibody [HRP]
NB720-B	Rabbit anti-Mouse IgG (H+L) Secondary Antibody [Biotin]
NBP2-27231	Mouse IgG2b Isotype Control (MPC-11)
NBP1-78966PEP	TET1 Antibody Blocking Peptide

Limitations

This product is for research use only and is not approved for use in humans or in clinical diagnosis. Primary Antibodies are guaranteed for 1 year from date of receipt.

For more information on our 100% guarantee, please visit www.novusbio.com/guarantee

Earn gift cards/discounts by submitting a review: www.novusbio.com/reviews/submit/NBP2-15135

Earn gift cards/discounts by submitting a publication using this product:
www.novusbio.com/publications

