

# Product Datasheet

## Scribble Antibody NBP2-15110

Unit Size: 0.1 ml

Aliquot and store at -20C or -80C. Avoid freeze-thaw cycles.

[www.novusbio.com](http://www.novusbio.com)



[technical@novusbio.com](mailto:technical@novusbio.com)

### Publications: 1

Protocols, Publications, Related Products, Reviews, Research Tools and Images at:  
[www.novusbio.com/NBP2-15110](http://www.novusbio.com/NBP2-15110)

Updated 10/23/2024 v.20.1

Earn rewards for product  
reviews and publications.

Submit a publication at [www.novusbio.com/publications](http://www.novusbio.com/publications)

Submit a review at [www.novusbio.com/reviews/destination/NBP2-15110](http://www.novusbio.com/reviews/destination/NBP2-15110)



**NBP2-15110**

Scribble Antibody

**Product Information**

|                                |  |
|--------------------------------|--|
| <b>Unit Size</b>               | 0.1 ml   |
| <b>Concentration</b>           | Concentrations vary lot to lot. See vial label for concentration. If unlisted please contact technical services. |
| <b>Storage</b>                 | Aliquot and store at -20C or -80C. Avoid freeze-thaw cycles.   |
| <b>Clonality</b>               | Polyclonal   |
| <b>Preservative</b>            | 0.025% Proclin 300   |
| <b>Isotype</b>                 | IgG  |
| <b>Purity</b>                  | Antigen Affinity-purified  |
| <b>Buffer</b>                  | PBS (pH 7), 20% Glycerol, 1% BSA   |
| <b>Target Molecular Weight</b> | 175 kDa  |

**Product Description**

|                    |   |
|--------------------|---|
| <b>Host</b>        | Rabbit  |
| <b>Gene ID</b>     | 23513   |
| <b>Gene Symbol</b> | SCRIB   |
| <b>Species</b>     | Human, Mouse  |
| <b>Immunogen</b>   | Carrier-protein conjugated synthetic peptide encompassing a sequence within the C-terminus region of human Scribble. The exact sequence is proprietary. |

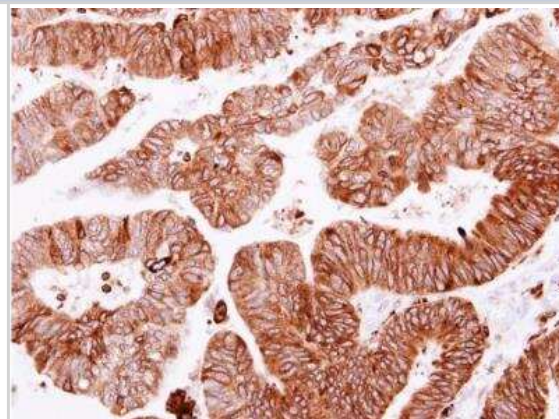
**Product Application Details**

|                              |  |
|------------------------------|--|
| <b>Applications</b>          | Western Blot, Immunohistochemistry, Immunohistochemistry-Paraffin  |
| <b>Recommended Dilutions</b> | Western Blot 1:500-1:3000, Immunohistochemistry 1:100-1:1000, Immunohistochemistry-Paraffin 1:100-1:1000 |

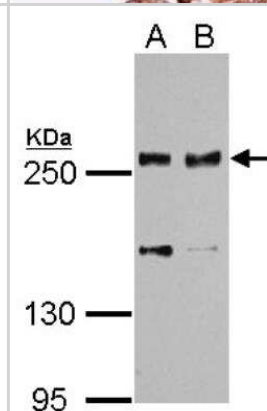


## Images

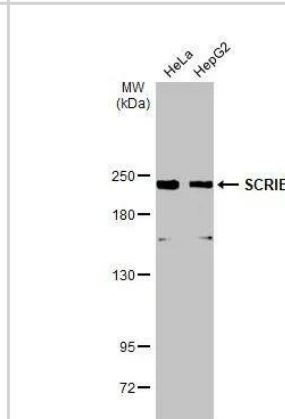
Immunohistochemistry-Paraffin: Scribble Antibody [NBP2-15110] - Human colon carcinoma. SCRIB antibody dilution: 1:250. Antigen Retrieval: Trilogy™ (EDTA based, pH 8.0) buffer, 15min.



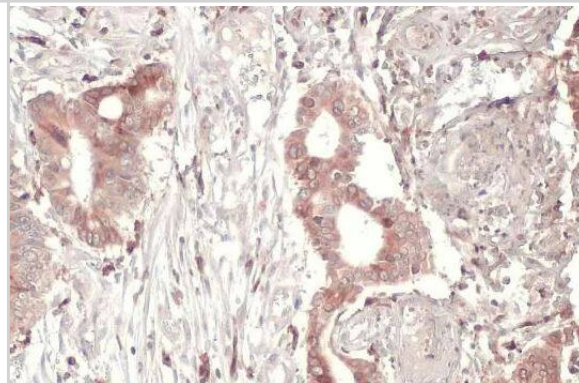
Western Blot: Scribble Antibody [NBP2-15110] - Sample (30 ug of whole cell lysate) A: NIH-3T3 B: JC 5% SDS PAGE; antibody diluted at 1:1000.



Western Blot: Scribble Antibody [NBP2-15110] -Various whole cell extracts (30 µg) were separated by 5% SDS-PAGE, and the membrane was blotted with SCRIB antibody diluted at 1:1000. The HRP-conjugated anti-rabbit IgG antibody (NBP2-19301) was used to detect the primary antibody.



Immunohistochemistry-Paraffin: Scribble Antibody [NBP2-15110] - Human colon cancer. SCRIB stained by SCRIB antibody diluted at 1:500. Antigen Retrieval: Citrate buffer, pH 6.0, 15 min



## Publications

Edamana S, Login FH, Riishede A et al. The cell polarity protein Scribble is downregulated by the water channel aquaporin-5 in breast cancer cells American journal of physiology. Cell physiology 2022-12-05 [PMID: 36468842]



### **Novus Biologicals USA**

10730 E. Briarwood Avenue  
Centennial, CO 80112  
USA  
Phone: 303.730.1950  
Toll Free: 1.888.506.6887  
Fax: 303.730.1966  
nb-customerservice@bio-techne.com

### **Bio-Techne Canada**

21 Canmotor Ave  
Toronto, ON M8Z 4E6  
Canada  
Phone: 905.827.6400  
Toll Free: 855.668.8722  
Fax: 905.827.6402  
canada.inquires@bio-techne.com

### **Bio-Techne Ltd**

19 Barton Lane  
Abingdon Science Park  
Abingdon, OX14 3NB, United Kingdom  
Phone: (44) (0) 1235 529449  
Free Phone: 0800 37 34 15  
Fax: (44) (0) 1235 533420  
info.EMEA@bio-techne.com

### **General Contact Information**

www.novusbio.com  
Technical Support: nb-technical@bio-  
techne.com  
Orders: nb-customerservice@bio-techne.com  
General: novus@novusbio.com

### **Products Related to NBP2-15110**

---

|               |   |
|---------------|---|
| HAF008        | Goat anti-Rabbit IgG Secondary Antibody [HRP]       |
| NB7160        | Goat anti-Rabbit IgG (H+L) Secondary Antibody [HRP] |
| NBP2-24891    | Rabbit IgG Isotype Control                          |
| NBP2-47286PEP | Scribble Recombinant Protein Antigen                |

---

### **Limitations**

This product is for research use only and is not approved for use in humans or in clinical diagnosis. Primary Antibodies are guaranteed for 1 year from date of receipt.

For more information on our 100% guarantee, please visit [www.novusbio.com/guarantee](http://www.novusbio.com/guarantee)

Earn gift cards/discounts by submitting a review: [www.novusbio.com/reviews/submit/NBP2-15110](http://www.novusbio.com/reviews/submit/NBP2-15110)

Earn gift cards/discounts by submitting a publication using this product:  
[www.novusbio.com/publications](http://www.novusbio.com/publications)

