

Product Datasheet

GCS1 Antibody NBP2-14967

Unit Size: 0.1 ml

Aliquot and store at -20C or -80C. Avoid freeze-thaw cycles.

www.novusbio.com



technical@novusbio.com

Reviews: 2 Publications: 1

Protocols, Publications, Related Products, Reviews, Research Tools and Images at:
www.novusbio.com/NBP2-14967

Updated 10/23/2024 v.20.1

**Earn rewards for product
reviews and publications.**

Submit a publication at www.novusbio.com/publications

Submit a review at www.novusbio.com/reviews/destination/NBP2-14967



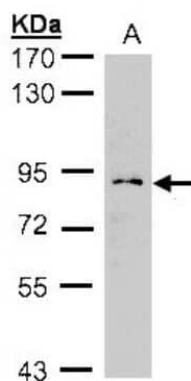
NBP2-14967**GCS1 Antibody**

Product Information	
Unit Size	0.1 ml
Concentration	Concentrations vary lot to lot. See vial label for concentration. If unlisted please contact technical services.
Storage	Aliquot and store at -20C or -80C. Avoid freeze-thaw cycles.
Clonality	Polyclonal
Preservative	0.01% Thimerosal
Isotype	IgG
Purity	Antigen Affinity-purified
Buffer	0.1M Tris-Glycine (pH7), 10% Glycerol
Target Molecular Weight	92 kDa
Product Description	
Host	Rabbit
Gene ID	7841
Gene Symbol	MOGS
Species	Human
Reactivity Notes	Mouse reactivity reported in scientific literature (PMID: 29465311).
Immunogen	Recombinant protein encompassing a sequence within the center region of human GCS1. The exact sequence is proprietary.
Product Application Details	
Applications	Western Blot, Immunocytochemistry/ Immunofluorescence, Immunoprecipitation, Knockdown Validated
Recommended Dilutions	Western Blot 1:500-1:3000, Immunocytochemistry/ Immunofluorescence Reported in scientific literature (PMID:29465311) , Immunoprecipitation Validated from a verified customer review. , Knockdown Validated Reported in scientific literature (PMID:29465311)

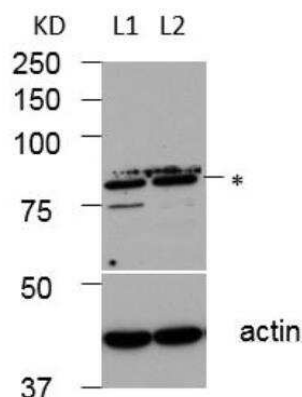


Images

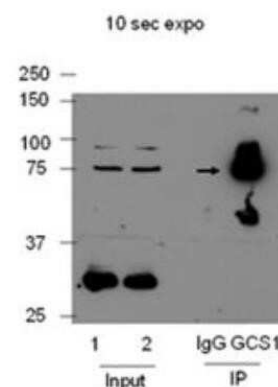
Western Blot: GCS1 Antibody [NBP2-14967] - (30 ug whole cell lysate) H12997. 5% SDS PAGE, antibody diluted at 1:1000.



Western Blot: GCS1 Antibody [NBP2-14967] - analysis of GCS1 in (L1) 100 ug of WT MEF cells and (L2) MEFs treated with GCS1 specific siRNA for 48 hours using anti-GCS1 antibody. * indicates the non-specific band recognized by the antibody. Image from verified customer review.



Immunoprecipitation: GCS1 Antibody [NBP2-14967] - Immunoprecipitation was performed by using 3ug of [NBP2-14967] in 2 mg whole cell lysate from WT MEF cells. The precipitated proteins were enriched with Protein A beads. The eluted proteins were analyzed through 12.5% SDS PAGE. Arrow indicates GCS1 band. Image from verified customer review.



Publications

Liu Y, Leslie PL, Jin A et al. p32 regulates ER stress and lipid homeostasis by down-regulating GCS1 expression FASEB J. 2018-07-20 [PMID: 29465311] (ICC/IF, IP, KD, WB, Mouse, Human)



Novus Biologicals USA

10730 E. Briarwood Avenue
Centennial, CO 80112
USA
Phone: 303.730.1950
Toll Free: 1.888.506.6887
Fax: 303.730.1966
nb-customerservice@bio-techne.com

Bio-Techne Canada

21 Canmotor Ave
Toronto, ON M8Z 4E6
Canada
Phone: 905.827.6400
Toll Free: 855.668.8722
Fax: 905.827.6402
canada.inquires@bio-techne.com

Bio-Techne Ltd

19 Barton Lane
Abingdon Science Park
Abingdon, OX14 3NB, United Kingdom
Phone: (44) (0) 1235 529449
Free Phone: 0800 37 34 15
Fax: (44) (0) 1235 533420
info.EMEA@bio-techne.com

General Contact Information

www.novusbio.com
Technical Support: nb-technical@bio-techne.com
Orders: nb-customerservice@bio-techne.com
General: novus@novusbio.com

Products Related to NBP2-14967

HAF008	Goat anti-Rabbit IgG Secondary Antibody [HRP]
NB7160	Goat anti-Rabbit IgG (H+L) Secondary Antibody [HRP]
NBP2-24891	Rabbit IgG Isotype Control
NBP1-81839PEP	GCS1 Recombinant Protein Antigen

Limitations

This product is for research use only and is not approved for use in humans or in clinical diagnosis. Primary Antibodies are guaranteed for 1 year from date of receipt.

For more information on our 100% guarantee, please visit www.novusbio.com/guarantee

Earn gift cards/discounts by submitting a review: www.novusbio.com/reviews/submit/NBP2-14967

Earn gift cards/discounts by submitting a publication using this product:
www.novusbio.com/publications

