

Product Datasheet

ETS2 Antibody NBP2-14951

Unit Size: 0.1 ml

Aliquot and store at -20C or -80C. Avoid freeze-thaw cycles.

www.novusbio.com



technical@novusbio.com

Protocols, Publications, Related Products, Reviews, Research Tools and Images at:
www.novusbio.com/NBP2-14951

Updated 5/1/2024 v.20.1

Earn rewards for product
reviews and publications.

Submit a publication at www.novusbio.com/publications

Submit a review at www.novusbio.com/reviews/destination/NBP2-14951



NBP2-14951

ETS2 Antibody

Product Information

Unit Size	0.1 ml
Concentration	Concentrations vary lot to lot. See vial label for concentration. If unlisted please contact technical services.
Storage	Aliquot and store at -20C or -80C. Avoid freeze-thaw cycles.
Clonality	Polyclonal
Preservative	0.025% Proclin 300
Isotype	IgG
Purity	Immunogen affinity purified
Buffer	PBS (pH 7), 20% Glycerol, 1% BSA
Target Molecular Weight	53 kDa

Product Description

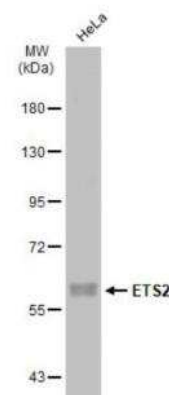
Host	Rabbit
Gene ID	2114
Gene Symbol	ETS2
Species	Human, Mouse, Rat
Reactivity Notes	Mouse (87%).
Immunogen	Recombinant protein encompassing a sequence within the center region of human ETS2. The exact sequence is proprietary.

Product Application Details

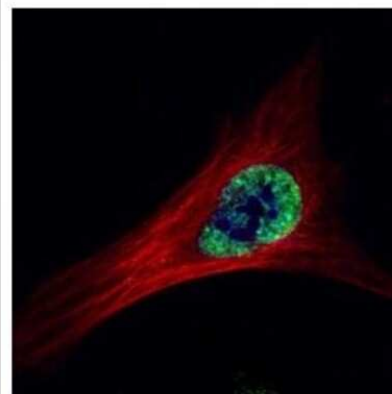
Applications	Western Blot, Immunocytochemistry/ Immunofluorescence, Immunohistochemistry, Immunohistochemistry-Paraffin, Immunoprecipitation, Chromatin Immunoprecipitation (ChIP)
Recommended Dilutions	Western Blot 1:500-1:3000, Immunohistochemistry 1:100-1:1000, Immunocytochemistry/ Immunofluorescence 1:100-1:1000, Immunoprecipitation 1:100-1:500, Immunohistochemistry-Paraffin 1:100-1:1000, Chromatin Immunoprecipitation (ChIP)
Application Notes	ChIP assay- Assay dependent

Images

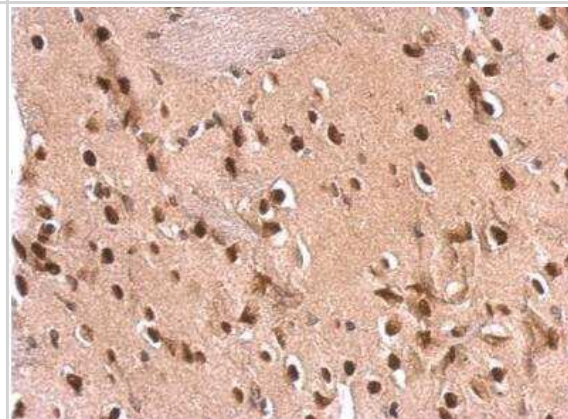
Western Blot: ETS2 Antibody [NBP2-14951] - Whole cell extract (30 ug) was separated by 7.5% SDS-PAGE, and the membrane was blotted with ETS2 antibody diluted at 1:500. The HRP-conjugated anti-rabbit IgG antibody (NBP2-19301) was used to detect the primary antibody.



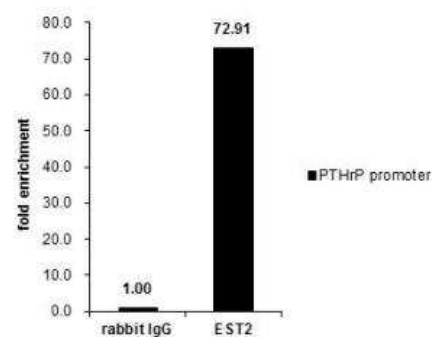
Immunocytochemistry/Immunofluorescence: ETS2 Antibody [NBP2-14951] - Paraformaldehyde-fixed HeLa, using ETS2 antibody (Green) at 1:500 dilution. Alpha-tubulin filaments were labeled with an alpha Tubulin antibody (Red) at 1:2000.



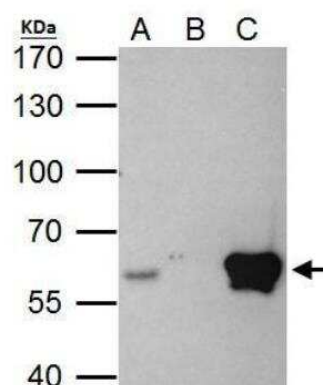
Immunohistochemistry-Paraffin: ETS2 Antibody [NBP2-14951] - Rat fore brain. ETS2 antibody dilution: 1:500. Antigen Retrieval: Trilogy™ (EDTA based, pH 8.0) buffer, 15min.



Chromatin Immunoprecipitation: ETS2 Antibody [NBP2-14951] - Cross-linked ChIP was performed with MCF-7 chromatin extract and 5 ug of either control rabbit IgG or anti-ETS2 antibody. The precipitated DNA was detected by PCR with primer set targeting to PTHrP promoter.



Immunoprecipitation: ETS2 Antibody [NBP2-14951] - HeLa whole cell lysate/extract A. 40 ug HeLa whole cell lysate/extract B. Control with 2 ug of preimmune rabbit IgG C. Immunoprecipitation of ETS2 protein by 2 ug of ETS2 antibody 7.5% SDS-PAGE The immunoprecipitated ETS2 protein was detected by ETS2 antibody diluted at 1:1000. EasyBlot anti-rabbit IgG was used as a secondary reagent.





Novus Biologicals USA

10730 E. Briarwood Avenue
Centennial, CO 80112
USA
Phone: 303.730.1950
Toll Free: 1.888.506.6887
Fax: 303.730.1966
nb-customerservice@bio-techne.com

Bio-Techne Canada

21 Canmotor Ave
Toronto, ON M8Z 4E6
Canada
Phone: 905.827.6400
Toll Free: 855.668.8722
Fax: 905.827.6402
canada.inquires@bio-techne.com

Bio-Techne Ltd

19 Barton Lane
Abingdon Science Park
Abingdon, OX14 3NB, United Kingdom
Phone: (44) (0) 1235 529449
Free Phone: 0800 37 34 15
Fax: (44) (0) 1235 533420
info.EMEA@bio-techne.com

General Contact Information

www.novusbio.com
Technical Support: nb-technical@bio-techne.com
Orders: nb-customerservice@bio-techne.com
General: novus@novusbio.com

Products Related to NBP2-14951

HAF008	Goat anti-Rabbit IgG Secondary Antibody [HRP]
NB7160	Goat anti-Rabbit IgG (H+L) Secondary Antibody [HRP]
NBP2-24891	Rabbit IgG Isotype Control
NBP2-51752-0.1mg	Recombinant Human ETS2 His Protein

Limitations

This product is for research use only and is not approved for use in humans or in clinical diagnosis. Primary Antibodies are guaranteed for 1 year from date of receipt.

For more information on our 100% guarantee, please visit www.novusbio.com/guarantee

Earn gift cards/discounts by submitting a review: www.novusbio.com/reviews/submit/NBP2-14951

Earn gift cards/discounts by submitting a publication using this product:
www.novusbio.com/publications

