

Product Datasheet

ETV5/ERM Antibody - BSA Free NBP2-14950

Unit Size: 0.1 ml

Aliquot and store at -20C or -80C. Avoid freeze-thaw cycles.

www.novusbio.com



technical@novusbio.com

Publications: 2

Protocols, Publications, Related Products, Reviews, Research Tools and Images at:
www.novusbio.com/NBP2-14950

Updated 9/9/2025 v.20.1

Earn rewards for product
reviews and publications.

Submit a publication at www.novusbio.com/publications

Submit a review at www.novusbio.com/reviews/destination/NBP2-14950



NBP2-14950

ETV5/ERM Antibody - BSA Free

Product Information

Unit Size	0.1 ml
Concentration	Concentrations vary lot to lot. See vial label for concentration. If unlisted please contact technical services.
Storage	Aliquot and store at -20C or -80C. Avoid freeze-thaw cycles.
Clonality	Polyclonal
Preservative	0.025% Proclin 300
Isotype	IgG
Purity	Antigen Affinity-purified
Buffer	PBS (pH 7), 20% Glycerol
Target Molecular Weight	58 kDa

Product Description

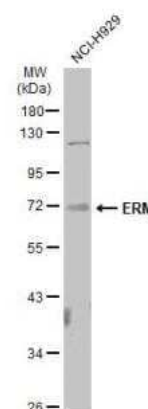
Description	Novus Biologicals Rabbit ETV5/ERM Antibody - BSA Free (NBP2-14950) is a polyclonal antibody validated for use in IHC, WB and ICC/IF. Anti-ETV5/ERM Antibody: Cited in 2 publications. All Novus Biologicals antibodies are covered by our 100% guarantee.
Host	Rabbit
Gene ID	2119
Gene Symbol	ETV5
Species	Human, Mouse
Reactivity Notes	Immunogen displays the following percentage of sequence identity for non-tested species: Chicken (88%).
Immunogen	Recombinant protein encompassing a sequence within the center region of human ETV5/ERM. The exact sequence is proprietary.

Product Application Details

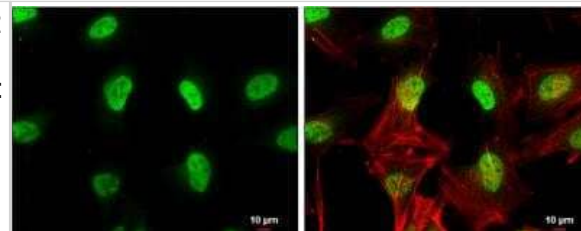
Applications	Western Blot, Immunohistochemistry-Paraffin, Immunocytochemistry/Immunofluorescence, Immunohistochemistry, Immunohistochemistry-Frozen
Recommended Dilutions	Western Blot 1:1000-1:10000, Immunohistochemistry 1:100-1:1000, Immunocytochemistry/ Immunofluorescence 1:100-1:1000, Immunohistochemistry-Paraffin 1:100-1:1000, Immunohistochemistry-Frozen
Application Notes	IHC-Fr Assay dependent

Images

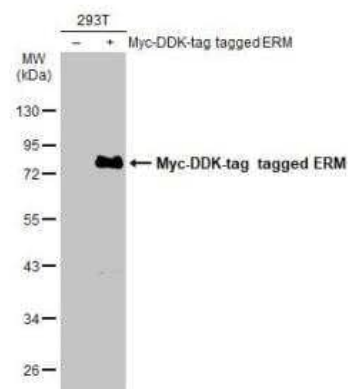
Western Blot: ETV5/ERM Antibody [NBP2-14950] - Whole cell extract (30 ug) was separated by 10% SDS-PAGE, and the membrane was blotted with ERM antibody diluted at 1:500. The HRP-conjugated anti-rabbit IgG antibody (NBP2-19301) was used to detect the primary antibody.



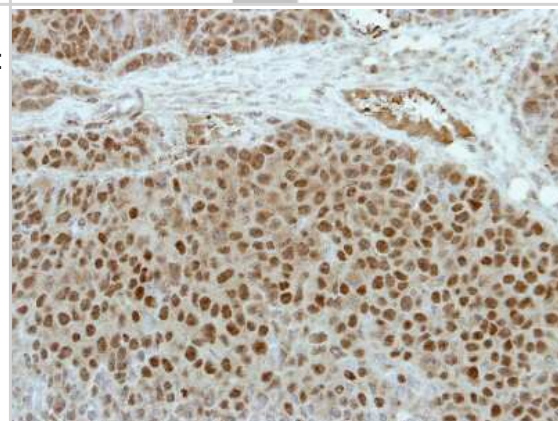
Immunocytochemistry/Immunofluorescence: ETV5/ERM Antibody [NBP2-14950] - HeLa cells were fixed in 4% paraformaldehyde at RT for 15 min. Green: ERM protein stained by ERM antibody diluted at 1:500. Red: Phalloidin, a cytoskeleton marker, diluted at 1:100. Blue: Hoechst 33342 staining. Scale bar = 10 μ m



Western Blot: ETV5/ERM Antibody [NBP2-14950] - Non-transfected (-) and transfected (+) 293T whole cell extracts (30 μ g) were separated by 10% SDS-PAGE, and the membrane was blotted with ERM antibody diluted at 1:5000. The HRP-conjugated anti-rabbit IgG antibody (NBP2-19301) was used to detect the primary antibody.



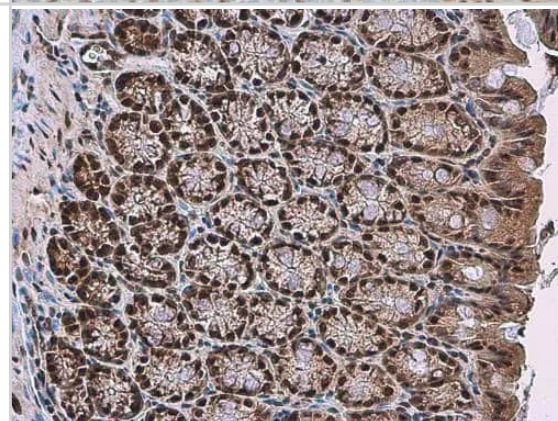
Immunohistochemistry-Paraffin: ETV5/ERM Antibody [NBP2-14950] - PC14 xenograft, using ERM antibody at 1:100 dilution. Antigen Retrieval: Trilogy™ (EDTA based, pH 8.0) buffer, 15min.



Immunohistochemistry-Paraffin: ETV5/ERM Antibody [NBP2-14950] - ETV5/ERM antibody detects ETV5/ERM protein at nucleus in mouse colon by immunohistochemical analysis.

Sample: Paraffin-embedded mouse colon.
ETV5/ERM antibody (NBP2-14950) diluted at 1:500.

Antigen Retrieval: Citrate buffer, pH 6.0, 15 min



Publications

Zhao J, Tang K, Jiang G et al. Dynamic transcriptomic and regulatory networks underpinning the transition from fetal primordial germ cells to spermatogonia in mice. Cell proliferation 2024-09-27 [PMID: 39329203]

Pan Y, Duron C, Bush EC et al. Graph complexity analysis identifies an ETV5 tumor-specific network in human and murine low-grade glioma PLoS ONE 2018-05-22 [PMID: 29787563] (IF/IHC, Mouse)



Novus Biologicals USA

10730 E. Briarwood Avenue
Centennial, CO 80112
USA

Phone: 303.730.1950

Toll Free: 1.888.506.6887

Fax: 303.730.1966

nb-customerservice@bio-techne.com

Bio-Techne Canada

21 Canmotor Ave
Toronto, ON M8Z 4E6
Canada

Phone: 905.827.6400

Toll Free: 855.668.8722

Fax: 905.827.6402

canada.inquires@bio-techne.com

Bio-Techne Ltd

19 Barton Lane
Abingdon Science Park
Abingdon, OX14 3NB, United Kingdom

Phone: (44) (0) 1235 529449

Free Phone: 0800 37 34 15

Fax: (44) (0) 1235 533420

info.EMEA@bio-techne.com

General Contact Information

www.novusbio.com

Technical Support: nb-technical@bio-techne.com

Orders: nb-customerservice@bio-techne.com

General: novus@novusbio.com

Products Related to NBP2-14950

HAF008	Goat anti-Rabbit IgG Secondary Antibody [HRP]
NB7160	Goat anti-Rabbit IgG (H+L) Secondary Antibody [HRP]
NBP2-24891	Rabbit IgG Isotype Control
H00002119-Q01-10ug	Recombinant Human ETV5/ERM GST (N-Term) Protein

Limitations

This product is for research use only and is not approved for use in humans or in clinical diagnosis. Primary Antibodies are guaranteed for 1 year from date of receipt.

For more information on our 100% guarantee, please visit www.novusbio.com/guarantee

Earn gift cards/discounts by submitting a review: www.novusbio.com/reviews/submit/NBP2-14950

Earn gift cards/discounts by submitting a publication using this product:

www.novusbio.com/publications

