

Product Datasheet

MISP1 Antibody NBP2-14390

Unit Size: 0.1 ml

Store at 4C short term. Aliquot and store at -20C long term. Avoid freeze-thaw cycles.

www.novusbio.com



technical@novusbio.com

Protocols, Publications, Related Products, Reviews, Research Tools and Images at:
www.novusbio.com/NBP2-14390

Updated 10/23/2024 v.20.1

Earn rewards for product
reviews and publications.

Submit a publication at www.novusbio.com/publications

Submit a review at www.novusbio.com/reviews/destination/NBP2-14390



NBP2-14390**MISP1 Antibody**

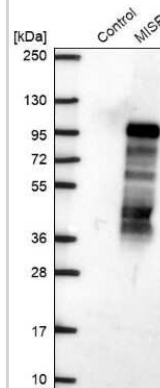
Product Information	
Unit Size	0.1 ml
Concentration	Concentrations vary lot to lot. See vial label for concentration. If unlisted please contact technical services.
Storage	Store at 4C short term. Aliquot and store at -20C long term. Avoid freeze-thaw cycles.
Clonality	Polyclonal
Preservative	0.02% Sodium Azide
Isotype	IgG
Purity	Immunogen affinity purified
Buffer	PBS (pH 7.2) and 40% Glycerol

Product Description	
Host	Rabbit
Gene ID	126353
Gene Symbol	MISP
Species	Human
Immunogen	This antibody was developed against a recombinant protein corresponding to the amino acids: SQASGITGSYSVSESPFFSPIHLHSNVAWTVEDPVDSAPPGQRKKEQWYAGIN PSDGINSEVLEAIRVTRHKNAMAERWESRIYASEDD

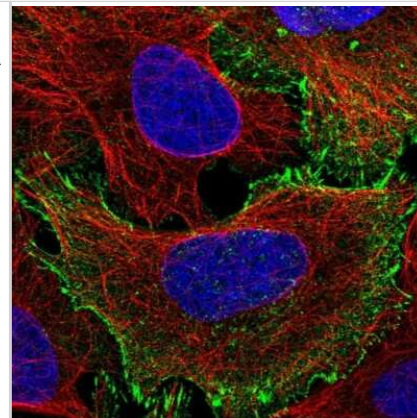
Product Application Details	
Applications	Western Blot, Immunocytochemistry/ Immunofluorescence, Immunohistochemistry, Immunohistochemistry-Paraffin
Recommended Dilutions	Western Blot 0.04-0.4 ug/ml, Immunohistochemistry 1:2500 - 1:5000, Immunocytochemistry/ Immunofluorescence 0.25-2 ug/ml, Immunohistochemistry-Paraffin 1:200-1:500
Application Notes	For IHC-Paraffin, HIER pH 6 retrieval is recommended. Immunocytochemistry/Immunofluorescence Fixation Permeabilization: Use PFA/Triton X-100.

Images

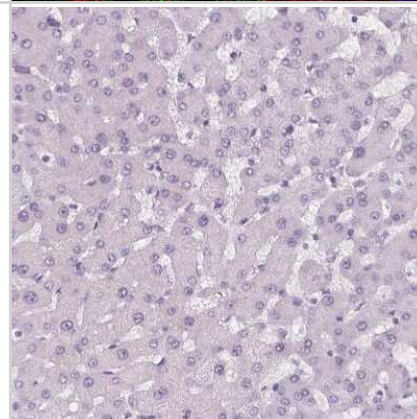
Western Blot: MISP1 Antibody [NBP2-14390] - Analysis in control (vector only transfected HEK293T lysate) and MISP over-expression lysate (Co-expressed with a C-terminal myc-DDK tag (3.1 kDa) in mammalian HEK293T cells).



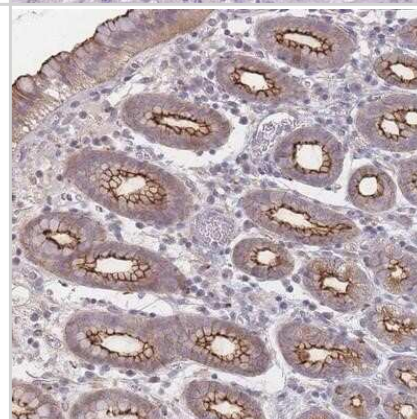
Immunocytochemistry/Immunofluorescence: MISP1 Antibody [NBP2-14390] - Staining of human cell line U-2 OS shows localization to plasma membrane and focal adhesion sites.



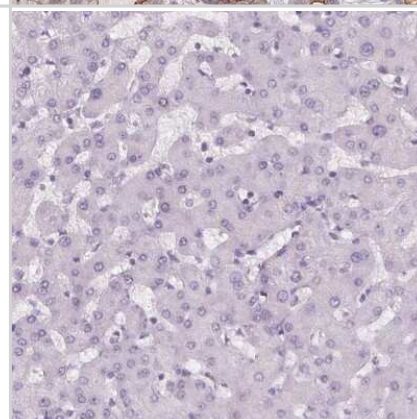
Immunohistochemistry-Paraffin: MISP1 Antibody [NBP2-14390] - Staining of human liver shows no positivity in hepatocytes as expected.



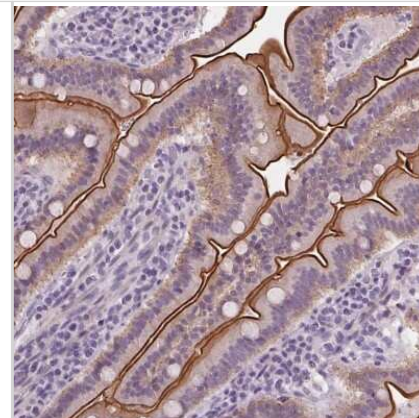
Immunohistochemistry-Paraffin: MISP1 Antibody [NBP2-14390] - Staining of human stomach, lower shows strong membranous and cytoplasmic positivity in glandular cells.



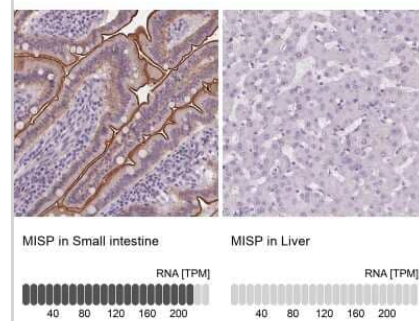
Immunohistochemistry-Paraffin: MISP1 Antibody [NBP2-14390] - Staining of human liver shows low expression as expected.



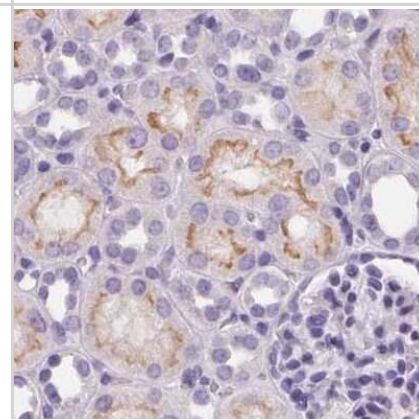
Immunohistochemistry-Paraffin: MISP1 Antibody [NBP2-14390] - Staining of human small intestine shows high expression.



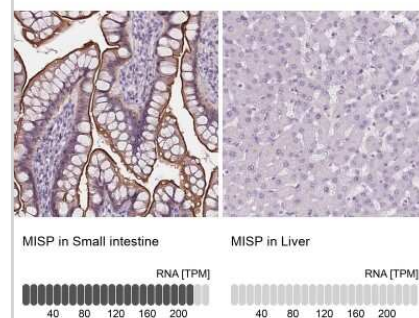
Immunohistochemistry-Paraffin: MISP1 Antibody [NBP2-14390] - Staining in human small intestine and liver tissues using anti-MISP antibody. Corresponding MISP RNA-seq data are presented for the same tissues.



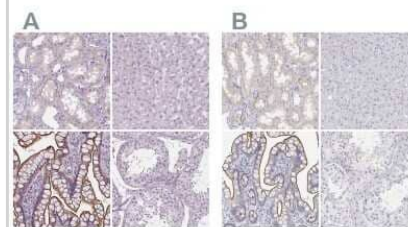
Immunohistochemistry-Paraffin: MISP1 Antibody [NBP2-14390] - Staining of human kidney.



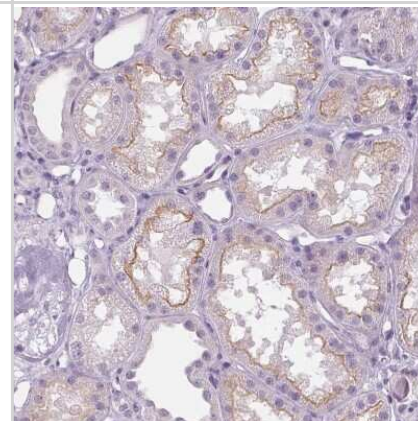
Immunohistochemistry-Paraffin: MISP1 Antibody [NBP2-14390] - Analysis in human small intestine and liver tissues. Corresponding MISP1 RNA-seq data are presented for the same tissues.



Immunohistochemistry-Paraffin: MISP1 Antibody [NBP2-14390] - Staining of human kidney, liver, small intestine and testis using Anti-MISP1 antibody NBP2-14390 (A) shows similar protein distribution across tissues to independent antibody NBP2-38955 (B).



Immunohistochemistry-Paraffin: MISP1 Antibody [NBP2-14390] - Staining of human kidney shows moderate positivity in luminal membrane in cells in tubules.





Novus Biologicals USA

10730 E. Briarwood Avenue
Centennial, CO 80112
USA
Phone: 303.730.1950
Toll Free: 1.888.506.6887
Fax: 303.730.1966
nb-customerservice@bio-techne.com

Bio-Techne Canada

21 Canmotor Ave
Toronto, ON M8Z 4E6
Canada
Phone: 905.827.6400
Toll Free: 855.668.8722
Fax: 905.827.6402
canada.inquires@bio-techne.com

Bio-Techne Ltd

19 Barton Lane
Abingdon Science Park
Abingdon, OX14 3NB, United Kingdom
Phone: (44) (0) 1235 529449
Free Phone: 0800 37 34 15
Fax: (44) (0) 1235 533420
info.EMEA@bio-techne.com

General Contact Information

www.novusbio.com
Technical Support: nb-technical@bio-techne.com
Orders: nb-customerservice@bio-techne.com
General: novus@novusbio.com

Products Related to NBP2-14390

NBP2-14390PEP	MISP1 Recombinant Protein Antigen
HAF008	Goat anti-Rabbit IgG Secondary Antibody [HRP]
NB7160	Goat anti-Rabbit IgG (H+L) Secondary Antibody [HRP]
NBP2-24891	Rabbit IgG Isotype Control

Limitations

This product is for research use only and is not approved for use in humans or in clinical diagnosis. Primary Antibodies are guaranteed for 1 year from date of receipt.

For more information on our 100% guarantee, please visit www.novusbio.com/guarantee

Earn gift cards/discounts by submitting a review: www.novusbio.com/reviews/submit/NBP2-14390

Earn gift cards/discounts by submitting a publication using this product:
www.novusbio.com/publications

