

Product Datasheet

GPT2 Antibody - BSA Free NBP2-14072

Unit Size: 0.1 ml

Store at 4C short term. Aliquot and store at -20C long term. Avoid freeze-thaw cycles.

www.novusbio.com



technical@novusbio.com

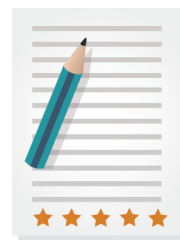
Protocols, Publications, Related Products, Reviews, Research Tools and Images at:
www.novusbio.com/NBP2-14072

Updated 4/13/2025 v.20.1

Earn rewards for product
reviews and publications.

Submit a publication at www.novusbio.com/publications

Submit a review at www.novusbio.com/reviews/destination/NBP2-14072



NBP2-14072

GPT2 Antibody - BSA Free

Product Information

Unit Size	0.1 ml
Concentration	Concentrations vary lot to lot. See vial label for concentration. If unlisted please contact technical services.
Storage	Store at 4C short term. Aliquot and store at -20C long term. Avoid freeze-thaw cycles.
Clonality	Polyclonal
Preservative	0.02% Sodium Azide
Isotype	IgG
Purity	Immunogen affinity purified
Buffer	PBS (pH 7.2) and 40% Glycerol

Product Description

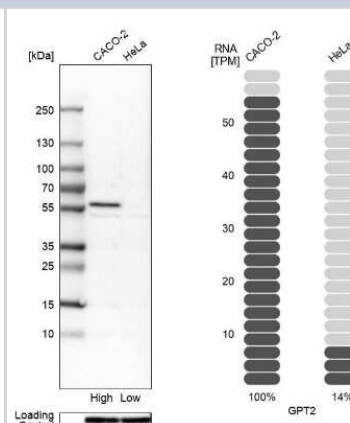
Host	Rabbit
Gene ID	84706
Gene Symbol	GPT2
Species	Human
Immunogen	This antibody was developed against Recombinant Protein corresponding to amino acids: PVSGQAAMDIVVNPPVAGEESFEQFSREKESVLGNLA

Product Application Details

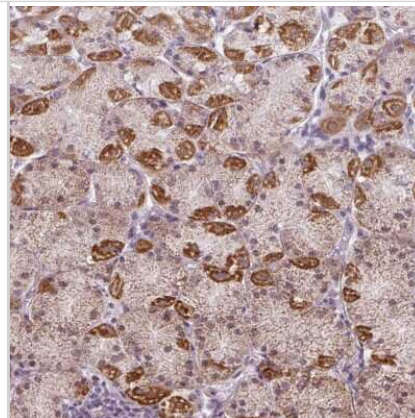
Applications	Western Blot, Simple Western, Immunohistochemistry, Immunohistochemistry-Paraffin
Recommended Dilutions	Western Blot 0.04-0.4 ug/ml, Simple Western 1:25, Immunohistochemistry 1:200 - 1:500, Immunohistochemistry-Paraffin 1:200 - 1:500
Application Notes	For IHC-Paraffin, HIER pH 6 retrieval is recommended. In Simple Western only 10 - 15 uL of the recommended dilution is used per data point. See Simple Western Antibody Database for Simple Western validation: Tested in HepG2 and h. Kidney lysates, separated by Size, antibody dilution of 1:25, apparent MW was 59 kDa

Images

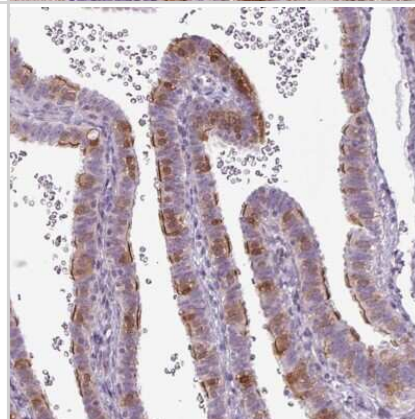
Western Blot: GPT2 Antibody [NBP2-14072] - Analysis in human cell lines Caco-2 and HeLa using anti-GPT2 antibody. Corresponding GPT2 RNA-seq data are presented for the same cell lines. Loading control: anti-GAPDH.



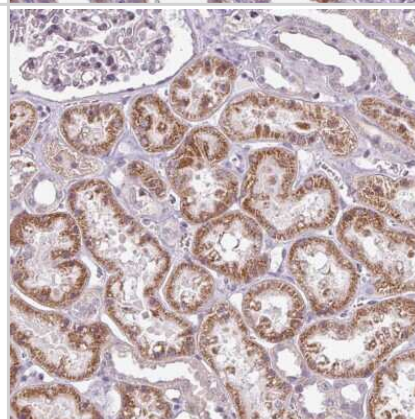
Immunohistochemistry-Paraffin: GPT2 Antibody [NBP2-14072] - Staining of human stomach shows moderate cytoplasmic positivity in parietal cells.



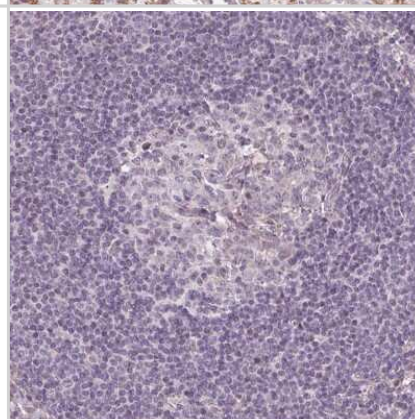
Immunohistochemistry-Paraffin: GPT2 Antibody [NBP2-14072] - Staining of human fallopian tube shows moderate cytoplasmic positivity in glandular cells.



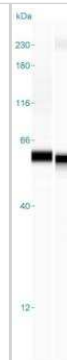
Immunohistochemistry-Paraffin: GPT2 Antibody [NBP2-14072] - Staining of human kidney shows moderate cytoplasmic positivity in cells in tubules.



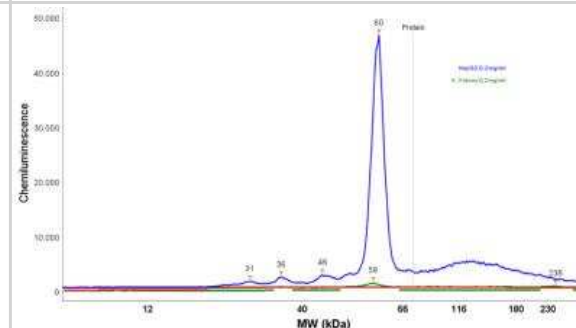
Immunohistochemistry-Paraffin: GPT2 Antibody [NBP2-14072] - Staining of human lymph node shows very weak positivity in lymphoid cells.



Simple Western: GPT2 Antibody [NBP2-14072] - Simple Western lane view shows a specific band for GPT2 in 0.2 mg/ml of HepG2 (left) and h. Kidney (right) lysate(s). This experiment was performed under reducing conditions using the 12-230 kDa separation system.



Simple Western: GPT2 Antibody [NBP2-14072] - Electropherogram image of the corresponding Simple Western lane view. GPT2 antibody was used at 1:25 dilution on HepG2 and h. Kidney lysate(s) respectively.





Novus Biologicals USA

10730 E. Briarwood Avenue
Centennial, CO 80112
USA
Phone: 303.730.1950
Toll Free: 1.888.506.6887
Fax: 303.730.1966
nb-customerservice@bio-techne.com

Bio-Techne Canada

21 Canmotor Ave
Toronto, ON M8Z 4E6
Canada
Phone: 905.827.6400
Toll Free: 855.668.8722
Fax: 905.827.6402
canada.inquires@bio-techne.com

Bio-Techne Ltd

19 Barton Lane
Abingdon Science Park
Abingdon, OX14 3NB, United Kingdom
Phone: (44) (0) 1235 529449
Free Phone: 0800 37 34 15
Fax: (44) (0) 1235 533420
info.EMEA@bio-techne.com

General Contact Information

www.novusbio.com
Technical Support: nb-technical@bio-techne.com
Orders: nb-customerservice@bio-techne.com
General: novus@novusbio.com

Products Related to NBP2-14072

NBP2-14072PEP	GPT2 Recombinant Protein Antigen
HAF008	Goat anti-Rabbit IgG Secondary Antibody [HRP]
NB7160	Goat anti-Rabbit IgG (H+L) Secondary Antibody [HRP]
NBP2-24891	Rabbit IgG Isotype Control

Limitations

This product is for research use only and is not approved for use in humans or in clinical diagnosis. Primary Antibodies are guaranteed for 1 year from date of receipt.

For more information on our 100% guarantee, please visit www.novusbio.com/guarantee

Earn gift cards/discounts by submitting a review: www.novusbio.com/reviews/submit/NBP2-14072

Earn gift cards/discounts by submitting a publication using this product:
www.novusbio.com/publications

