

Product Datasheet

CDP/CUTL1 Antibody - BSA Free NBP2-13883

Unit Size: 0.1 ml

Store at 4C short term. Aliquot and store at -20C long term. Avoid freeze-thaw cycles.

www.novusbio.com



technical@novusbio.com

Reviews: 2 Publications: 4

Protocols, Publications, Related Products, Reviews, Research Tools and Images at:
www.novusbio.com/NBP2-13883

Updated 9/9/2025 v.20.1

**Earn rewards for product
reviews and publications.**

Submit a publication at www.novusbio.com/publications

Submit a review at www.novusbio.com/reviews/destination/NBP2-13883



NBP2-13883

CDP/CUTL1 Antibody - BSA Free

Product Information	
Unit Size	0.1 ml
Concentration	Concentrations vary lot to lot. See vial label for concentration. If unlisted please contact technical services.
Storage	Store at 4C short term. Aliquot and store at -20C long term. Avoid freeze-thaw cycles.
Clonality	Polyclonal
Preservative	0.02% Sodium Azide
Isotype	IgG
Purity	Immunogen affinity purified
Buffer	PBS (pH 7.2), 40% Glycerol

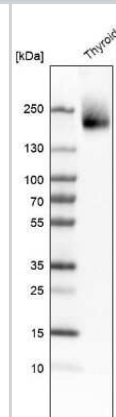
Product Description	
Description	Novus Biologicals Rabbit CDP/CUTL1 Antibody - BSA Free (NBP2-13883) is a polyclonal antibody validated for use in IHC and WB. Anti-CDP/CUTL1 Antibody: Cited in 4 publications. All Novus Biologicals antibodies are covered by our 100% guarantee.
Host	Rabbit
Gene ID	1523
Gene Symbol	CUX1
Species	Human, Mouse
Reactivity Notes	Mouse reactivity reported in scientific literature (PMID: 27471254) and verified customer review.
Immunogen	This antibody was developed against a recombinant protein corresponding to the amino acids: KSFQGEIDALSKRSKEAEAAFLNVYKRLIDVPDPVPALDLGQQLQLKVQRLHDI ETENQKLRETL EEYNKEFAEVKNQEVTIKALKEKIREYEQTLKNQAETIALEKEQ KLQNDFAEKERKLQETQMSTTSKLEEAHKVQSLQTALE

Product Application Details	
Applications	Western Blot, Immunohistochemistry-Frozen, Microarray, Chromatin Immunoprecipitation-exo-Seq
Recommended Dilutions	Western Blot 0.04 - 0.4 ug/ml, Immunohistochemistry-Frozen Validated from a verified customer review., Microarray Validated from a verified customer review., Chromatin Immunoprecipitation-exo-Seq 1-10ug per reaction

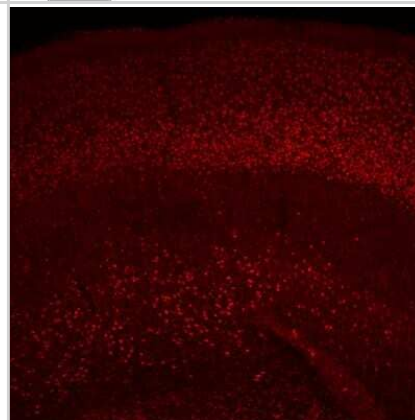


Images

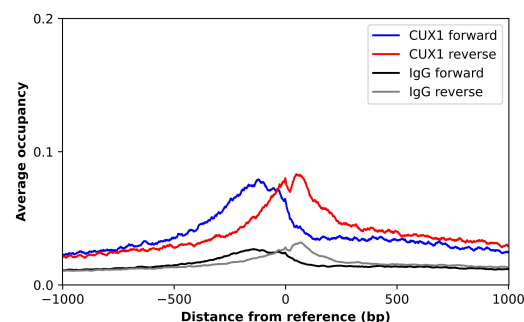
Western Blot: CDP/CUTL1 Antibody [NBP2-13883] - Analysis in human thyroid gland tissue.



Immunohistochemistry-Frozen: CDP/CUTL1 Antibody [NBP2-13883] - P15 mouse brain stained with CUTL1 antibody. IHC-Fr image submitted by a verified customer review.



ChIP-Exo-Seq composite graph for Anti-CUX1 (NBP2-13883) tested in K562 cells. Strand-specific reads (blue: forward, red: reverse) and IgG controls (black: forward, grey: reverse) are plotted against the distance from a composite set of reference binding sites. The antibody exhibits robust target enrichment compared to a non-specific IgG control and precisely reveals its structural organization around the binding site. Data generated by Prof. B. F. Pugh's Lab at Cornell University.



Publications

Virlogeux A, Scaramuzzino C, Lenoir S et al. Increasing brain palmitoylation rescues behavior and neuropathology in Huntington disease mice *Science Advances* 2021-04-02 [PMID: 33789888] (Mouse)

Li AM, Hill RA, Grutzendler J. Intravital Imaging of Neocortical Heterotopia Reveals Aberrant Axonal Pathfinding and Myelination around Ectopic Neurons *Cerebral Cortex* 2021-04-20 [PMID: 33877363] (Mouse)

Jossin Y, Lee M et al. Llg1 Connects Cell Polarity with Cell-Cell Adhesion in Embryonic Neural Stem Cells. *Dev Cell* 2017-05-06 [PMID: 28552558] (WB, Human)

Mestres I, Chuang JZ, Calegari F et al. SARA regulates neuronal migration during neocortical development through L1 trafficking. *Development*. 2016-09-01 [PMID: 27471254] (Mouse)



Novus Biologicals USA

10730 E. Briarwood Avenue
Centennial, CO 80112
USA
Phone: 303.730.1950
Toll Free: 1.888.506.6887
Fax: 303.730.1966
nb-customerservice@bio-techne.com

Bio-Techne Canada

21 Canmotor Ave
Toronto, ON M8Z 4E6
Canada
Phone: 905.827.6400
Toll Free: 855.668.8722
Fax: 905.827.6402
canada.inquires@bio-techne.com

Bio-Techne Ltd

19 Barton Lane
Abingdon Science Park
Abingdon, OX14 3NB, United Kingdom
Phone: (44) (0) 1235 529449
Free Phone: 0800 37 34 15
Fax: (44) (0) 1235 533420
info.EMEA@bio-techne.com

General Contact Information

www.novusbio.com
Technical Support: nb-technical@bio-techne.com
Orders: nb-customerservice@bio-techne.com
General: novus@novusbio.com

Products Related to NBP2-13883

NBP2-13883PEP	CDP/CUTL1 Recombinant Protein Antigen
HAF008	Goat anti-Rabbit IgG Secondary Antibody [HRP]
NB7160	Goat anti-Rabbit IgG (H+L) Secondary Antibody [HRP]
NBP2-24891	Rabbit IgG Isotype Control

Limitations

This product is for research use only and is not approved for use in humans or in clinical diagnosis. Primary Antibodies are guaranteed for 1 year from date of receipt.

For more information on our 100% guarantee, please visit www.novusbio.com/guarantee

Earn gift cards/discounts by submitting a review: www.novusbio.com/reviews/submit/NBP2-13883

Earn gift cards/discounts by submitting a publication using this product:
www.novusbio.com/publications

