

# Product Datasheet

## WEHI-3 Whole Cell Lysate NBP2-13176

Unit Size: 0.25 mg

Store at -80C. Avoid freeze-thaw cycles.

[www.novusbio.com](http://www.novusbio.com)



[technical@novusbio.com](mailto:technical@novusbio.com)

Protocols, Publications, Related Products, Reviews, Research Tools and Images at:  
[www.novusbio.com/NBP2-13176](http://www.novusbio.com/NBP2-13176)

Updated 10/23/2024 v.20.1

Earn rewards for product  
reviews and publications.

Submit a publication at [www.novusbio.com/publications](http://www.novusbio.com/publications)

Submit a review at [www.novusbio.com/reviews/destination/NBP2-13176](http://www.novusbio.com/reviews/destination/NBP2-13176)



**NBP2-13176****WEHI-3 Whole Cell Lysate**

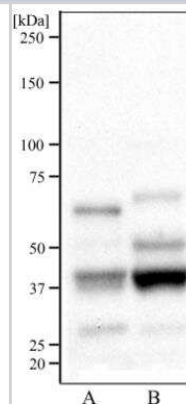
<b>Product Information</b>	
<b>Unit Size</b>	0.25 mg
<b>Concentration</b>	2.5 mg/ml
<b>Storage</b>	Store at -80C. Avoid freeze-thaw cycles.
<b>Buffer</b>	Standard RIPA buffer including protease and phosphatase inhibitors and 0.1% SDS diluted in 1X Laemmli Sample Buffer [62.5mM Tris HCl, 25% Glycerol, 2% SDS, 0.01% bromophenol blue, pH 6.8]. Denaturing agents have not been added.

<b>Product Description</b>	
<b>Species</b>	Mouse
<b>Lysate Type</b>	Cell
<b>Lysate Tissue</b>	Blood Lymph
<b>Lysate Protein State</b>	Native
<b>Lysate Subcellular Fraction</b>	Whole

<b>Product Application Details</b>	
<b>Applications</b>	SDS-Page
<b>Recommended Dilutions</b>	SDS-Page

**Images**

Western Blot: WEHI-3 Whole Cell Lysate [NBP2-13176] - Western blot analysis using WEHI-3 whole cell lysate [NBP2-13176] (A) and HUVEC cell lysate (B). Primary antibody Beta actin (NB600-503) was used.





### **Novus Biologicals USA**

10730 E. Briarwood Avenue  
Centennial, CO 80112  
USA  
Phone: 303.730.1950  
Toll Free: 1.888.506.6887  
Fax: 303.730.1966  
nb-customerservice@bio-techne.com

### **Bio-Techne Canada**

21 Canmotor Ave  
Toronto, ON M8Z 4E6  
Canada  
Phone: 905.827.6400  
Toll Free: 855.668.8722  
Fax: 905.827.6402  
canada.inquires@bio-techne.com

### **Bio-Techne Ltd**

19 Barton Lane  
Abingdon Science Park  
Abingdon, OX14 3NB, United Kingdom  
Phone: (44) (0) 1235 529449  
Free Phone: 0800 37 34 15  
Fax: (44) (0) 1235 533420  
info.EMEA@bio-techne.com

### **General Contact Information**

www.novusbio.com  
Technical Support: nb-technical@bio-  
techne.com  
Orders: nb-customerservice@bio-techne.com  
General: novus@novusbio.com

### **Limitations**

This product is for research use only and is not approved for use in humans or in clinical diagnosis.  
Lysates are guaranteed for 6 months from date of receipt.

For more information on our 100% guarantee, please visit [www.novusbio.com/guarantee](http://www.novusbio.com/guarantee)

Earn gift cards/discounts by submitting a review: [www.novusbio.com/reviews/submit/NBP2-13176](http://www.novusbio.com/reviews/submit/NBP2-13176)

Earn gift cards/discounts by submitting a publication using this product:  
[www.novusbio.com/publications](http://www.novusbio.com/publications)

