

Product Datasheet

SPRY2 Antibody - BSA Free

NBP2-13158

Unit Size: 0.1 mg

Store at -20C short term. Aliquot and store at -80C long term. Avoid freeze-thaw cycles.

www.novusbio.com



technical@novusbio.com

Publications: 1

Protocols, Publications, Related Products, Reviews, Research Tools and Images at:
www.novusbio.com/NBP2-13158

Updated 2/23/2025 v.20.1

Earn rewards for product
reviews and publications.

Submit a publication at www.novusbio.com/publications

Submit a review at www.novusbio.com/reviews/destination/NBP2-13158



NBP2-13158

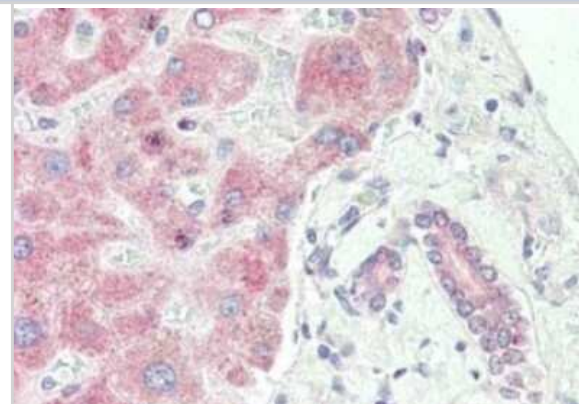
SPRY2 Antibody - BSA Free

| Product Information | |
|-----------------------------|--|
| Unit Size | 0.1 mg |
| Concentration | Please see the vial label for concentration. If unlisted please contact technical services. |
| Storage | Store at -20C short term. Aliquot and store at -80C long term. Avoid freeze-thaw cycles. |
| Clonality | Polyclonal |
| Preservative | 0.01% Sodium Azide |
| Isotype | IgG |
| Purity | Immunogen affinity purified |
| Buffer | 0.02 M Potassium Phosphate, 0.15 M Sodium Chloride, pH 7.2 |
| Product Description | |
| Description | <p>This antibody was affinity purified from monospecific antiserum by immunoaffinity chromatography</p> <p>Store vial at -20C prior to opening. Aliquot contents and freeze at -20C or below for extended storage. Avoid cycles of freezing and thawing. Centrifuge product if not completely clear after standing at room temperature. This product is stable for several weeks at 4C as an undiluted liquid. Dilute only prior to immediate use.</p> |
| Host | Rabbit |
| Gene ID | 10253 |
| Gene Symbol | SPRY2 |
| Species | Human |
| Reactivity Notes | A BLAST analysis was used to suggest reactivity with SPRY2 from human, monkey, and orangutan based on a 100% homology with the immunizing sequence. Cross-reactivity with Sprouty2 from other sources has not been determined. |
| Immunogen | SPRY2 Antibody was purified from monospecific rabbit antiserum prepared via repeated immunizations with peptide corresponding to an internal region of human sprouty-2. (Uniprot: O43597) |
| Product Application Details | |
| Applications | Western Blot, ELISA, Immunocytochemistry/ Immunofluorescence, Immunohistochemistry, Immunohistochemistry-Paraffin |
| Recommended Dilutions | Western Blot 1:500-1:5000, ELISA 1:100-1:2000, Immunohistochemistry 10 ug/ml, Immunocytochemistry/ Immunofluorescence 1:10-1:500, Immunohistochemistry-Paraffin 10 ug/ml |
| Application Notes | This product has been tested by ELISA, Immunofluorescence, Immunohistochemistry, and is suitable for western blotting. Specific conditions for reactivity should be optimized by the end user. |

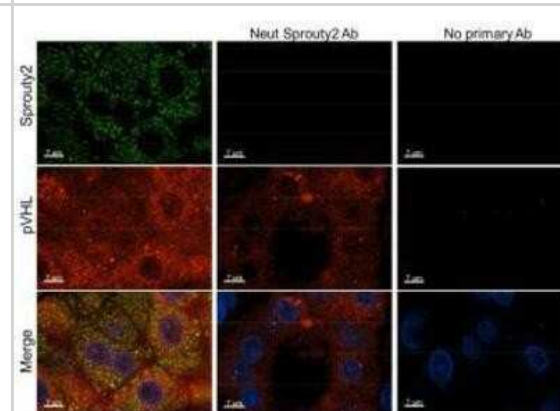


Images

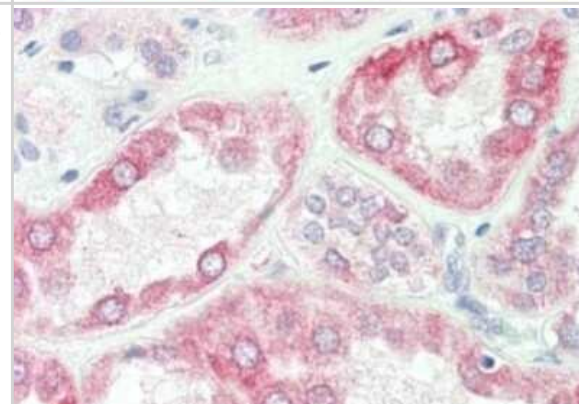
Immunohistochemistry: SPRY2 Antibody [NBP2-13158] - Tissue: liver. Fixation: formalin fixed paraffin embedded. Primary antibody: Anti-sprouty 2 at 10 ug/mL for 1 h at RT. Secondary antibody: Peroxidase rabbit secondary antibody at 1:10,000 for 45 min at RT. Staining: Sprouty-2 as precipitated red signal with hematoxylin purple nuclear counterstain.



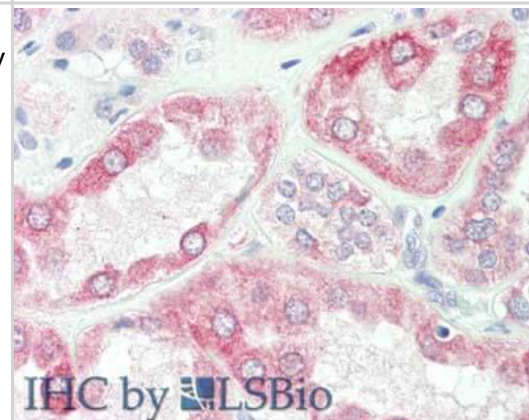
Immunohistochemistry-Paraffin: SPRY2 Antibody [NBP2-13158] - Immunohistochemistry-Paraffin: Sprouty 2 - Tissue: human kidney clear cell tumor. Fixation: formalin fixed, paraffin embedded. Antigen retrieval: yes. Primary antibody: Sprouty2 antibody at 1:250. Secondary antibody: alexafluor 488 secondary at 1:500 overnight at 4C. Localization: nucleus and cytoplasm. Staining: green = sprouty2, Blue = dapi, red= vhl.



Immunohistochemistry: SPRY2 Antibody [NBP2-13158] - Tissue: kidney. Fixation: formalin fixed paraffin embedded. Primary antibody: Anti-sprouty 2 at 10 ug/mL for 1 h at RT. Secondary antibody: Peroxidase rabbit secondary antibody at 1:10,000 for 45 min at RT. Staining: Sprouty-2 as precipitated red signal with hematoxylin purple nuclear counterstain.



Immunohistochemistry of SPRY2 Antibody. Tissue: kidney. Fixation: formalin fixed paraffin embedded. Antigen retrieval: not required. Primary antibody: Anti-sprouty 2 at 10 ug/mL for 1 h at RT. Secondary antibody: Peroxidase rabbit secondary antibody at 1:10,000 for 45 min at RT. Staining: Sprouty-2 as precipitated red signal with hematoxylin purple nuclear counterstain.



Publications

Zhang C, Chaturvedi D, Jaggar L et al. Regulation of vascular smooth muscle cell proliferation and migration by human sprouty 2. Arterioscler Thromb Vasc Biol 2005-03-01 [PMID: 15653567]



Novus Biologicals USA

10730 E. Briarwood Avenue
Centennial, CO 80112
USA
Phone: 303.730.1950
Toll Free: 1.888.506.6887
Fax: 303.730.1966
nb-customerservice@bio-techne.com

Bio-Techne Canada

21 Canmotor Ave
Toronto, ON M8Z 4E6
Canada
Phone: 905.827.6400
Toll Free: 855.668.8722
Fax: 905.827.6402
canada.inquires@bio-techne.com

Bio-Techne Ltd

19 Barton Lane
Abingdon Science Park
Abingdon, OX14 3NB, United Kingdom
Phone: (44) (0) 1235 529449
Free Phone: 0800 37 34 15
Fax: (44) (0) 1235 533420
info.EMEA@bio-techne.com

General Contact Information

www.novusbio.com
Technical Support: nb-technical@bio-techne.com
Orders: nb-customerservice@bio-techne.com
General: novus@novusbio.com

Products Related to NBP2-13158

| | |
|--------------------|---|
| HAF008 | Goat anti-Rabbit IgG Secondary Antibody [HRP] |
| NB7160 | Goat anti-Rabbit IgG (H+L) Secondary Antibody [HRP] |
| NBP2-24891 | Rabbit IgG Isotype Control |
| H00010253-P01-10ug | Recombinant Human SPRY2 GST (N-Term) Protein |

Limitations

This product is for research use only and is not approved for use in humans or in clinical diagnosis. Primary Antibodies are guaranteed for 1 year from date of receipt.

For more information on our 100% guarantee, please visit www.novusbio.com/guarantee

Earn gift cards/discounts by submitting a review: www.novusbio.com/reviews/submit/NBP2-13158

Earn gift cards/discounts by submitting a publication using this product:
www.novusbio.com/publications

