

Product Datasheet

AlphaA Crystallin/CRYAA Antibody (1H3.B8) - BSA Free NBP2-12875-200ug

Unit Size: 200 ug

Store at 4C short term. Aliquot and store at -20C long term. Avoid freeze-thaw cycles.

www.novusbio.com



technical@novusbio.com

Publications: 1

Protocols, Publications, Related Products, Reviews, Research Tools and Images at:
www.novusbio.com/NBP2-12875

Updated 2/23/2025 v.20.1

Earn rewards for product
reviews and publications.

Submit a publication at www.novusbio.com/publications

Submit a review at www.novusbio.com/reviews/destination/NBP2-12875



NBP2-12875-200ug

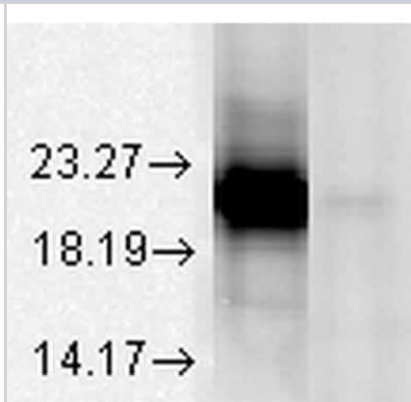
AlphaA Crystallin/CRYAA Antibody (1H3.B8) - BSA Free

Product Information	
Unit Size	200 ug
Concentration	1 mg/ml
Storage	Store at 4C short term. Aliquot and store at -20C long term. Avoid freeze-thaw cycles.
Clonality	Monoclonal
Clone	1H3.B8
Preservative	0.09% Sodium Azide
Isotype	IgG1
Purity	Protein G purified
Buffer	PBS (pH 7.2), 50% Glycerol
Product Description	
Host	Mouse
Gene ID	1409
Gene Symbol	CRYAA
Species	Human, Mouse, Rat, Bovine
Specificity/Sensitivity	Detects approx 20kDa. Does not cross-react with aB-crystallin, Beta L-crystallin, BH- crystallin, gamma-crystallin, HSP25, HSP27 or HSP47 proteins.
Immunogen	Native Alpha Crystallin
Product Application Details	
Applications	Western Blot, ELISA, Immunocytochemistry/ Immunofluorescence
Recommended Dilutions	Western Blot 1:2000, ELISA, Immunocytochemistry/ Immunofluorescence 1:100
Application Notes	0.5 ug/ml was sufficient for detection of 100 ng purified alphaA crystalline by colorimetric immunoblot analysis using Goat Anti-Mouse IgG:HRP as the secondary. Alpha A Crystallin Antibody. Use in Immunoblotting reported in scientific literature (PMID 28546921)..



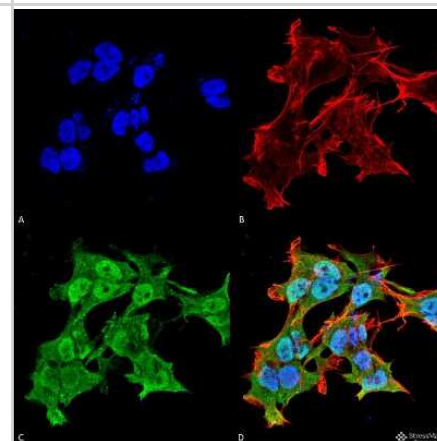
Images

Western Blot: AlphaA Crystallin/CRYAA Antibody (1H3.B8) [NBP2-12875] - Western Blot analysis of Bovine tissue lysate showing detection of AlphaA Crystallin/CRYAA protein using Mouse Anti-AlphaA Crystallin/CRYAA Monoclonal Antibody, Clone 1H3.B8 (NBP2-12875). Load: 15 ug. Block: 1.5% BSA for 30 minutes at RT. Primary Antibody: Mouse Anti-AlphaA Crystallin/CRYAA Monoclonal Antibody (NBP2-12875) at 1:1000 for 2 hours at RT. Secondary Antibody: Sheep Anti-Mouse IgG: HRP for 1 hour at RT. This blot shows absolute specificity as Left: AlphaA Crystallin/CRYAA, Right: Alpha B Crystallin.

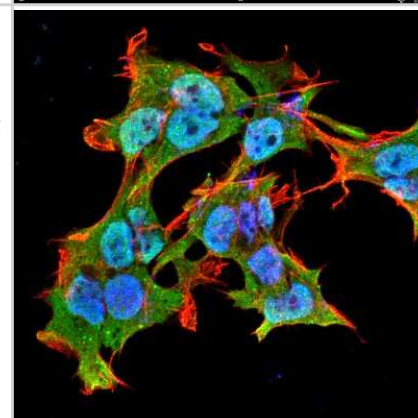


Immunocytochemistry/Immunofluorescence: AlphaA Crystallin/CRYAA Antibody (1H3.B8) [NBP2-12875] -

Immunocytochemistry/Immunofluorescence analysis using Mouse Anti-AlphaA Crystallin/CRYAA Monoclonal Antibody, Clone 1H3.B8 (NBP2-12875). Tissue: Neuroblastoma cell line (SK-N-BE). Species: Human. Fixation: 4% Formaldehyde for 15 min at RT. Primary Antibody: Mouse Anti-AlphaA Crystallin/CRYAA Monoclonal Antibody (NBP2-12875) at 1:100 for 60 min at RT. Secondary Antibody: Goat Anti-Mouse ATTO 488 at 1:100 for 60 min at RT. Counterstain: Phalloidin Texas Red F-Actin stain; DAPI (blue) nuclear stain at 1:1000, 1:5000 for 60min RT, 5min RT. Localization: Cytoplasm . Magnification: 60X. (A) DAPI (blue) nuclear stain. (B) Phalloidin Texas Red F-Actin stain. (C) AlphaA Crystallin/CRYAA Antibody. (D) Composite.



Immunocytochemistry/Immunofluorescence: AlphaA Crystallin/CRYAA Antibody (1H3.B8) [NBP2-12875] - Tissue: Neuroblastoma cell line SK-N-BE. Species: Human. Fixation: 4% Formaldehyde for 15 min at RT. Primary Antibody: Mouse Anti-Alpha A Crystallin Monoclonal Antibody at 1:100 for 60 min at RT. Secondary Antibody: Goat Anti-Mouse ATTO 488 at 1:100 for 60 min at RT. Counterstain: Phalloidin Texas Red F-Actin stain; DAPI (blue) nuclear stain at 1:1000, 1:5000 for 60min RT, 5min RT. Localization: Cytoplasm . Magnification: 60X.



Publications

Cui XK, Zhu KK, Zhou Z et al. A novel frameshift mutation in CX46 associated with hereditary dominant cataracts in a Chinese family. Int J Ophthalmol 2017-05-26 [PMID: 28546921] (IB, Human)



Novus Biologicals USA

10730 E. Briarwood Avenue
Centennial, CO 80112
USA
Phone: 303.730.1950
Toll Free: 1.888.506.6887
Fax: 303.730.1966
nb-customerservice@bio-techne.com

Bio-Techne Canada

21 Canmotor Ave
Toronto, ON M8Z 4E6
Canada
Phone: 905.827.6400
Toll Free: 855.668.8722
Fax: 905.827.6402
canada.inquires@bio-techne.com

Bio-Techne Ltd

19 Barton Lane
Abingdon Science Park
Abingdon, OX14 3NB, United Kingdom
Phone: (44) (0) 1235 529449
Free Phone: 0800 37 34 15
Fax: (44) (0) 1235 533420
info.EMEA@bio-techne.com

General Contact Information

www.novusbio.com
Technical Support: nb-technical@bio-techne.com
Orders: nb-customerservice@bio-techne.com
General: novus@novusbio.com

Products Related to NBP2-12875-200ug

HAF007	Goat anti-Mouse IgG Secondary Antibody [HRP]
NB720-B	Rabbit anti-Mouse IgG (H+L) Secondary Antibody [Biotin]
NBP1-97005-0.5mg	Mouse IgG1 Isotype Control (MG1)
NBC1-18351	Recombinant Human AlphaA Crystallin/CRYAA Protein

Limitations

This product is for research use only and is not approved for use in humans or in clinical diagnosis. Primary Antibodies are guaranteed for 1 year from date of receipt.

For more information on our 100% guarantee, please visit www.novusbio.com/guarantee

Earn gift cards/discounts by submitting a review: www.novusbio.com/reviews/submit/NBP2-12875

Earn gift cards/discounts by submitting a publication using this product:
www.novusbio.com/publications

