

Product Datasheet

ERK1/2 Antibody NBP2-12728

Unit Size: 0.025 ml

Store at 4C short term. Aliquot and store at -20C long term. Avoid freeze-thaw cycles.

www.novusbio.com



technical@novusbio.com

Publications: 1

Protocols, Publications, Related Products, Reviews, Research Tools and Images at:
www.novusbio.com/NBP2-12728

Updated 4/24/2024 v.20.1

Earn rewards for product
reviews and publications.

Submit a publication at www.novusbio.com/publications

Submit a review at www.novusbio.com/reviews/destination/NBP2-12728



NBP2-12728**ERK1/2 Antibody****Product Information**

Unit Size	0.025 ml
Concentration	1 mg/ml
Storage	Store at 4C short term. Aliquot and store at -20C long term. Avoid freeze-thaw cycles.
Clonality	Polyclonal
Preservative	0.09% Sodium Azide
Isotype	IgG
Purity	Peptide affinity purified
Buffer	PBS (pH 7.4), 50% Glycerol

Product Description

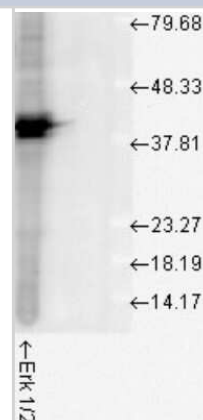
Host	Rabbit
Gene ID	5595
Gene Symbol	MAPK3
Species	Human, Mouse, Rat, Bovine, Chicken, Drosophila, Sheep, Xenopus
Specificity/Sensitivity	Detects approx 44kda (ERK1) and approx 42kDa (ERK2).
Immunogen	A 35 residue synthetic peptide, corresponding to Erk1 MAP kinase with the CGG spacer group added and the peptide coupled to KLH.

Product Application Details

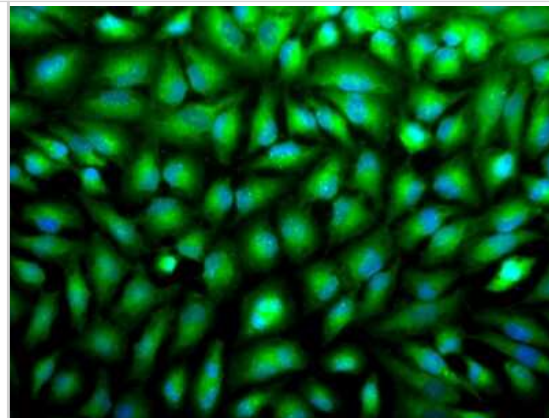
Applications	Western Blot, Flow Cytometry, Immunocytochemistry/ Immunofluorescence, Immunohistochemistry, Immunohistochemistry-Paraffin
Recommended Dilutions	Western Blot 1:5000, Flow Cytometry 1:100, Immunohistochemistry 1:100, Immunocytochemistry/ Immunofluorescence 1:100, Immunohistochemistry-Paraffin 1:50
Application Notes	A 1:1000 dilution of Erk1/2 Antibody was sufficient for detection of ERK1/2 in 20 ug of HeLa cell lysate by ECL immunoblot analysis.

Images

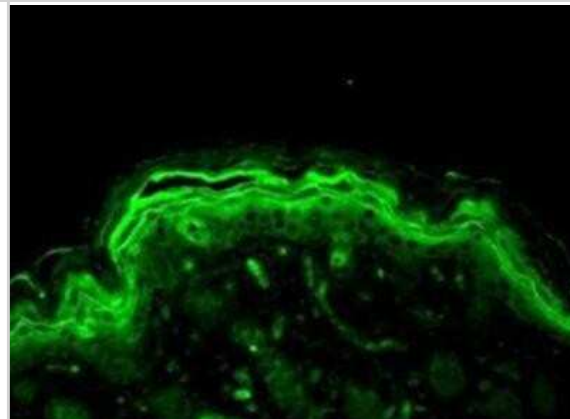
Western Blot: ERK1/2 Antibody [NBP2-12728] - analysis of Human Cell line lysates showing detection of ERK1 protein using Rabbit Anti-ERK1 Polyclonal Antibody . Load: 15 ug protein. Block: 1.5% BSA for 30 minutes at RT. Primary Antibody: Rabbit Anti-ERK1 Polyclonal Antibody at 1:1000 for 2 hours at RT. Secondary Antibody: Donkey Anti-Rabbit IgG: HRP for 1 hour at RT.



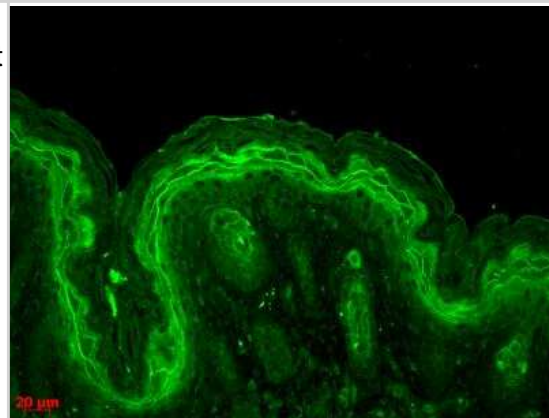
Immunocytochemistry/Immunofluorescence: ERK1/2 Antibody [NBP2-12728] - Tissue: HeLa Cells. Species: Human. Fixation: 2% Formaldehyde for 20 min at RT. Primary Antibody: Rabbit Anti-Erk1/2 Polyclonal Antibody at 1:100 for 12 hours at 4C. Secondary Antibody: APC Goat Anti-Rabbit (red) at 1:200 for 2 hours at RT. Counterstain: DAPI (blue) nuclear stain at 1:40000 for 2 hours at RT. Localization: Cytoplasm. Nucleus. Magnification: 100x.



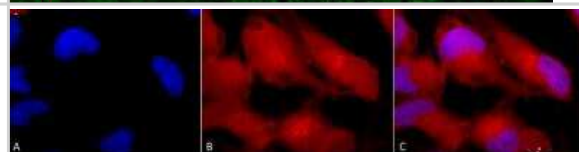
Immunohistochemistry-Paraffin: ERK1/2 Antibody [NBP2-12728] - Tested on Bouin's fixed paraffin embedded backskin sections of transgenic mice.



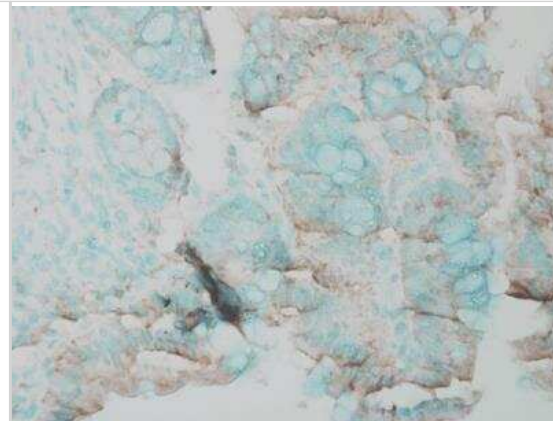
Immunocytochemistry/Immunofluorescence: ERK1/2 Antibody [NBP2-12728] - Tissue: backskin. Species: Mouse. ERK1 Polyclonal Antibody at 1:100 for 1 hour at RT. Secondary Antibody: FITC Goat Anti-Rabbit (green) at 1:50 for 1 hour at RT. Localization: Cytoplasm. This image is courtesy of Dr. Turksen, Ottawa Hospital Research Institute, Canada.



Immunocytochemistry/Immunofluorescence: ERK1/2 Antibody [NBP2-12728] - Tissue: HeLa Cells. Species: Human. Fixation: 2% Formaldehyde for 20 min at RT. Primary Antibody: Rabbit Anti-Erk1/2 Polyclonal Antibody at 1:100 for 12 hours at 4 degrees C. Secondary Antibody: APC Goat Anti-Rabbit (red) at 1:200 for 120 min at RT. Counterstain: DAPI (blue) nuclear stain at 1:40000 for 120 min at RT. Localization: Cytoplasm. Nucleus. Magnification: 100x. (A) DAPI (blue) nuclear stain. (B) Anti-Erk1/2 Antibody. (C) Composite.



Immunohistochemistry-Paraffin: ERK1/2 Antibody [NBP2-12728] -
Tissue: Inflamed colon. Species: Mouse. Fixation: Formalin. Primary
Antibody: Rabbit Anti-ERK1 Polyclonal Antibody at 1:25000 for 12 hours
at 4-C. Secondary Antibody: Biotin Goat Anti-Rabbit at 1:2000 for 1 hour
at RT. Counterstain: Methyl Green at 200 uL for 2 min at RT



Publications

Batalha IM, Maylem ERS, Spicer LJ et al. Effects of asprosin on estradiol and progesterone secretion and proliferation of bovine granulosa cells Molecular and cellular endocrinology 2023-04-05 [PMID: 36822263] (Simple Western, Bovine)



Novus Biologicals USA

10730 E. Briarwood Avenue
Centennial, CO 80112
USA
Phone: 303.730.1950
Toll Free: 1.888.506.6887
Fax: 303.730.1966
nb-customerservice@bio-techne.com

Bio-Techne Canada

21 Canmotor Ave
Toronto, ON M8Z 4E6
Canada
Phone: 905.827.6400
Toll Free: 855.668.8722
Fax: 905.827.6402
canada.inquires@bio-techne.com

Bio-Techne Ltd

19 Barton Lane
Abingdon Science Park
Abingdon, OX14 3NB, United Kingdom
Phone: (44) (0) 1235 529449
Free Phone: 0800 37 34 15
Fax: (44) (0) 1235 533420
info.EMEA@bio-techne.com

General Contact Information

www.novusbio.com
Technical Support: nb-technical@bio-
techne.com
Orders: nb-customerservice@bio-techne.com
General: novus@novusbio.com

Limitations

This product is for research use only and is not approved for use in humans or in clinical diagnosis. Primary Antibodies are guaranteed for 1 year from date of receipt.

For more information on our 100% guarantee, please visit www.novusbio.com/guarantee

Earn gift cards/discounts by submitting a review: www.novusbio.com/reviews/submit/NBP2-12728

Earn gift cards/discounts by submitting a publication using this product:
www.novusbio.com/publications

