

Product Datasheet

Calnexin Antibody NBP2-12724-200ul

Unit Size: 200 ul

Store at 4C short term. Aliquot and store at -20C long term. Avoid freeze-thaw cycles.

www.novusbio.com



technical@novusbio.com

Protocols, Publications, Related Products, Reviews, Research Tools and Images at:
www.novusbio.com/NBP2-12724

Updated 7/18/2022 v.20.1

Earn rewards for product
reviews and publications.

Submit a publication at www.novusbio.com/publications

Submit a review at www.novusbio.com/reviews/destination/NBP2-12724



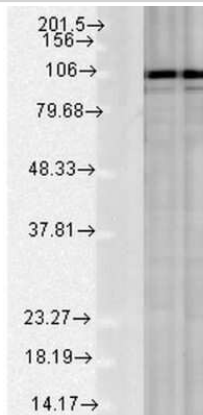
NBP2-12724-200ul

Calnexin Antibody

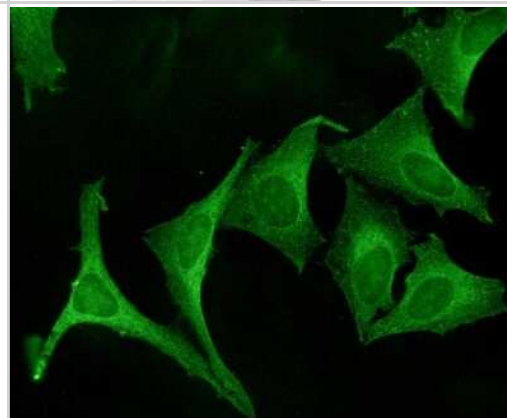
Product Information	
Unit Size	200 ul
Concentration	1 mg/ml
Storage	Store at 4C short term. Aliquot and store at -20C long term. Avoid freeze-thaw cycles.
Clonality	Polyclonal
Preservative	0.09% Sodium Azide
Isotype	IgG
Purity	Peptide affinity purified
Buffer	PBS (pH 7.4)
Product Description	
Host	Rabbit
Gene ID	821
Gene Symbol	CANX
Species	Canine
Reactivity Notes	Based on homology, It is predicted to detect Human , Mouse , Rat , Bovine , Monkey , Chicken , Guinea Pig , Hamster , Porcine , Avian , Quail , Rabbit , Sheep , Drosophila and Xenopus
Marker	Endoplasmic Reticulum Membrane Marker
Specificity/Sensitivity	Detects the C-terminal domain of Calnexin approx 90kDa.
Immunogen	Dog calnexin C-terminal synthetic peptide conjugated to KLH. Identical to human, mouse and rat calnexin sequences over these residues.
Product Application Details	
Applications	Western Blot, Immunocytochemistry/Immunofluorescence, Immunohistochemistry, Immunohistochemistry-Paraffin
Recommended Dilutions	Western Blot 1:2000, Immunohistochemistry 1:10-1:500, Immunocytochemistry/Immunofluorescence, Immunohistochemistry-Paraffin 1:10-1:500
Application Notes	A 1:1000 dilution of Calnexin-CT Antibody was sufficient for detection of Calnexin in 10 ug of HeLa cell lysate by ECL immunoblot analysis.

Images

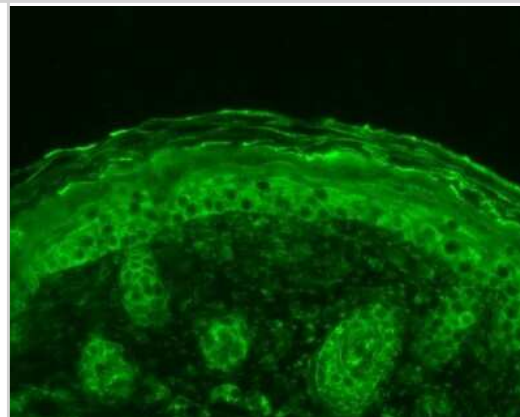
Western Blot: Calnexin Antibody [NBP2-12724] - Western blot analysis of Rat Tissue lysates showing detection of Calnexin protein using Rabbit Anti-Calnexin Polyclonal Antibody (NBP2-12724). Load: 15 ugprotein. Block: 1.5% BSA. Primary Antibody: Rabbit Anti-Calnexin Polyclonal Antibody (NBP2-12724) at 1:1000 for 2 hours at RT. Secondary Antibody: Donkey Anti-Rabbit IgG: HRP for 1 hour at RT.



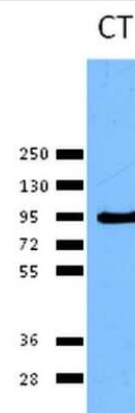
Immunocytochemistry/Immunofluorescence: Calnexin Antibody [NBP2-12724] - Immunocytochemistry/Immunofluorescence analysis using Rabbit Anti-Calnexin Polyclonal Antibody (NBP2-12724). Tissue: Cervical cancer cell line (HeLa). Species: Human. Primary Antibody: Rabbit Anti-Calnexin Polyclonal Antibody (NBP2-12724) at 1:100. Secondary Antibody: FITC Goat Anti-Rabbit (green).



Immunohistochemistry: Calnexin Antibody [NBP2-12724] - Immunohistochemistry analysis using Rabbit Anti-Calnexin Polyclonal Antibody (NBP2-12724). Tissue: backskin. Species: Mouse. Fixation: Bouin's Fixative Solution. Primary Antibody: Rabbit Anti-Calnexin Polyclonal Antibody (NBP2-12724) at 1:100 for 1 hour at RT. Secondary Antibody: FITC Goat Anti-Rabbit (green) at 1:50 for 1 hour at RT.



Western Blot: Calnexin Antibody [NBP2-12724] - Western blot analysis of Human Cervical cancer cell line (HeLa) lysate showing detection of Calnexin protein using Rabbit Anti-Calnexin Polyclonal Antibody (NBP2-12724). Primary Antibody: Rabbit Anti-Calnexin Polyclonal Antibody (NBP2-12724) at 1:1000.





Novus Biologicals USA

10730 E. Briarwood Avenue
Centennial, CO 80112
USA

Phone: 303.730.1950
Toll Free: 1.888.506.6887
Fax: 303.730.1966
novus@novusbio.com

Bio-Techne Canada

21 Canmotor Ave
Toronto, ON M8Z 4E6
Canada

Phone: 905.827.6400
Toll Free: 855.668.8722
Fax: 905.827.6402
canada.inquires@bio-techne.com

Bio-Techne Ltd

19 Barton Lane
Abingdon Science Park
Abingdon, OX14 3NB, United Kingdom

Phone: (44) (0) 1235 529449
Free Phone: 0800 37 34 15
Fax: (44) (0) 1235 533420
info.EMEA@bio-techne.com

General Contact Information

www.novusbio.com
Technical Support: technical@novusbio.com
Orders: orders@novusbio.com
General: novus@novusbio.com

Limitations

This product is for research use only and is not approved for use in humans or in clinical diagnosis. Primary Antibodies are guaranteed for 1 year from date of receipt.

For more information on our 100% guarantee, please visit www.novusbio.com/guarantee

Earn gift cards/discounts by submitting a review: www.novusbio.com/reviews/submit/NBP2-12724

Earn gift cards/discounts by submitting a publication using this product:
www.novusbio.com/publications

