

# Product Datasheet

## Plasma Kallikrein/KLKB1 Native Protein NBP2-12555

Unit Size: 0.05 mg

Store at -20 to -80C. Avoid freeze-thaw cycles.

[www.novusbio.com](http://www.novusbio.com)



[technical@novusbio.com](mailto:technical@novusbio.com)

Protocols, Publications, Related Products, Reviews, Research Tools and Images at:  
[www.novusbio.com/NBP2-12555](http://www.novusbio.com/NBP2-12555)

Updated 10/3/2023 v.20.1

Earn rewards for product  
reviews and publications.

Submit a publication at [www.novusbio.com/publications](http://www.novusbio.com/publications)

Submit a review at [www.novusbio.com/reviews/destination/NBP2-12555](http://www.novusbio.com/reviews/destination/NBP2-12555)



**NBP2-12555****Plasma Kallikrein/KLKB1 Native Protein****Product Information**

<b>Unit Size</b>	0.05 mg
<b>Concentration</b>	Please see the vial label for concentration. If unlisted please contact technical services.
<b>Storage</b>	Store at -20 to -80C. Avoid freeze-thaw cycles.
<b>Purity</b>	>95%, by SDS-PAGE
<b>Buffer</b>	20 mM Tris-HCl (pH 7.8), 100 mM NaCl
<b>Target Molecular Weight</b>	87 kDa

**Product Description**

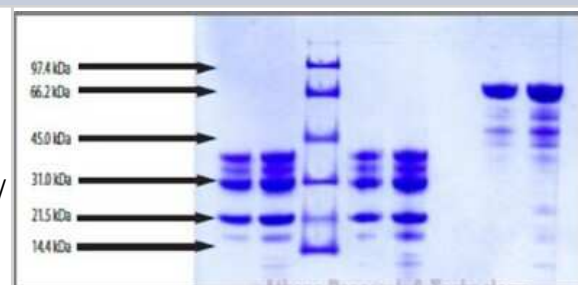
<b>Description</b>	<p>Native Plasma Kallikrein/KLKB1</p> <p>Source: <i>Human plasma</i>  <i>Amino Acid Sequence: (P03952)</i></p> <p><i>This product is manufactured by Abcam and distributed by Novus Biologicals.  (Abcam Catalog Number: ab285481)</i></p>
<b>Gene ID</b>	3818
<b>Gene Symbol</b>	KLKB1
<b>Species</b>	Human
<b>Preparation Method</b>	Human plasma (Prepared from plasma shown to be non-reactive for HbsAG, anti-HCV, anti-HBc, and negative for anti-HIV 1 and 2 by FDA approved tests). MW 86 to 88 kDa.
<b>Details of Functionality</b>	One unit is defined as the amount of enzyme that hydrolyzes one umol of D-Pro-Phe-Arg-pNA per minute at 25C, pH 7.8.

**Product Application Details**

<b>Applications</b>	SDS-Page, Bioactivity
<b>Recommended Dilutions</b>	SDS-Page, Bioactivity
<b>Application Notes</b>	Specific activity: 15 units/mg

**Images**

SDS-Page: Plasma Kallikrein/KLKB1 Native Protein [NBP2-12555] - From left to right: Lane 1: Kallikrein - 10 ug (reduced / heated). Lane 2: Kallikrein - 20 ug (reduced / heated). Lane 3: LMW Standard (BIO-RAD Cat. No. 161-0304). Lane 4: Kallikrein - 10 ug (reduced / no heat). Lane 5: Kallikrein - 20 ug (reduced / no heat). Lane 6: Blank. Lane 7: Kallikrein - 10 ug (non-reduced / no heat). Lane 8: Kallikrein - 20 ug (non-reduced / no heat).





### **Novus Biologicals USA**

10730 E. Briarwood Avenue  
Centennial, CO 80112  
USA  
Phone: 303.730.1950  
Toll Free: 1.888.506.6887  
Fax: 303.730.1966  
nb-customerservice@bio-techne.com

### **Bio-Techne Canada**

21 Canmotor Ave  
Toronto, ON M8Z 4E6  
Canada  
Phone: 905.827.6400  
Toll Free: 855.668.8722  
Fax: 905.827.6402  
canada.inquires@bio-techne.com

### **Bio-Techne Ltd**

19 Barton Lane  
Abingdon Science Park  
Abingdon, OX14 3NB, United Kingdom  
Phone: (44) (0) 1235 529449  
Free Phone: 0800 37 34 15  
Fax: (44) (0) 1235 533420  
info.EMEA@bio-techne.com

### **General Contact Information**

[www.novusbio.com](http://www.novusbio.com)  
Technical Support: nb-technical@bio-techne.com  
Orders: nb-customerservice@bio-techne.com  
General: novus@novusbio.com

### **Limitations**

This product is for research use only and is not approved for use in humans or in clinical diagnosis. Peptides and proteins are guaranteed for 3 months from date of receipt.

For more information on our 100% guarantee, please visit [www.novusbio.com/guarantee](http://www.novusbio.com/guarantee)

Earn gift cards/discounts by submitting a review: [www.novusbio.com/reviews/submit/NBP2-12555](http://www.novusbio.com/reviews/submit/NBP2-12555)

Earn gift cards/discounts by submitting a publication using this product:  
[www.novusbio.com/publications](http://www.novusbio.com/publications)

