

# Product Datasheet

## CCR6 Antibody (RM0187-25J7)

### NBP2-12132

Unit Size: 0.1 mg

Store at 4C short term. Aliquot and store at -20C long term. Avoid freeze-thaw cycles.

[www.novusbio.com](http://www.novusbio.com)



[technical@novusbio.com](mailto:technical@novusbio.com)

Protocols, Publications, Related Products, Reviews, Research Tools and Images at:  
[www.novusbio.com/NBP2-12132](http://www.novusbio.com/NBP2-12132)

Updated 7/15/2019 v.20.1

Earn rewards for product  
reviews and publications.

Submit a publication at [www.novusbio.com/publications](http://www.novusbio.com/publications)

Submit a review at [www.novusbio.com/reviews/destination/NBP2-12132](http://www.novusbio.com/reviews/destination/NBP2-12132)



**NBP2-12132**

CCR6 Antibody (RM0187-25J7)

**Product Information**

<b>Unit Size</b>	0.1 mg
<b>Concentration</b>	LYOPH mg/ml
<b>Storage</b>	Store at 4C short term. Aliquot and store at -20C long term. Avoid freeze-thaw cycles.
<b>Clonality</b>	Monoclonal
<b>Clone</b>	RM0187-25J7
<b>Preservative</b>	No Preservative
<b>Reconstitution Instructions</b>	Reconstitute with 0.2 ml sterilized PBS to a final concentration of 0.5 mg/ml.
<b>Isotype</b>	IgG2 Alpha
<b>Purity</b>	Protein G purified
<b>Buffer</b>	A 0.2 um filtered solution in PBS

**Product Description**

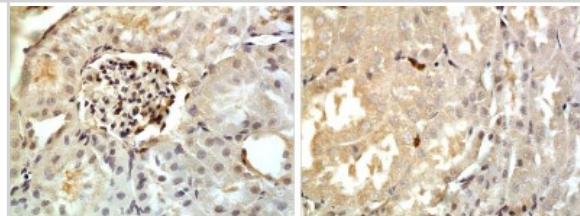
<b>Host</b>	Rat
<b>Gene ID</b>	1235
<b>Gene Symbol</b>	CCR6
<b>Species</b>	Mouse
<b>Immunogen</b>	Mouse CCR6

**Product Application Details**

<b>Applications</b>	Flow Cytometry, Immunohistochemistry, Immunohistochemistry-Frozen, Immunohistochemistry-Paraffin, CyTOF-ready
<b>Recommended Dilutions</b>	Flow Cytometry 1:20-50, Immunohistochemistry 1:60-240, Immunohistochemistry-Paraffin, Immunohistochemistry-Frozen 1:60-240, CyTOF-ready
<b>Application Notes</b>	This antibody is Cytotof ready.

**Images**

Immunohistochemistry-Paraffin: CCR6 Antibody (RM0187-25J7) [NBP2-12132] - The Kidney tissue samples from the Folic Acid induced kidney injury model were fixed using 4% PFA at 4C for overnight and embedded in paraffin. 4um section was subjected to IHC with NBP2-12132





### **Novus Biologicals USA**

10730 E. Briarwood Avenue  
Centennial, CO 80112  
USA

Phone: 303.730.1950  
Toll Free: 1.888.506.6887  
Fax: 303.730.1966  
novus@novusbio.com

### **Novus Biologicals Canada**

461 North Service Road West, Unit B37  
Oakville, ON L6M 2V5  
Canada

Phone: 905.827.6400  
Toll Free: 855.668.8722  
Fax: 905.827.6402  
canada@novusbio.com

### **Novus Biologicals Europe**

19 Barton Lane  
Abingdon Science Park  
Abingdon, OX14 3NB, United Kingdom  
Phone: (44) (0) 1235 529449  
Free Phone: 0800 37 34 15  
Fax: (44) (0) 1235 533420  
info@bio-techne.com

### **General Contact Information**

www.novusbio.com  
Technical Support: technical@novusbio.com  
Orders: orders@novusbio.com  
General: novus@novusbio.com

### **Limitations**

This product is for research use only and is not approved for use in humans or in clinical diagnosis. Primary Antibodies are guaranteed for 1 year from date of receipt.

For more information on our 100% guarantee, please visit [www.novusbio.com/guarantee](http://www.novusbio.com/guarantee)

Earn gift cards/discounts by submitting a review: [www.novusbio.com/reviews/submit/NBP2-12132](http://www.novusbio.com/reviews/submit/NBP2-12132)

Earn gift cards/discounts by submitting a publication using this product:  
[www.novusbio.com/publications](http://www.novusbio.com/publications)

