

Product Datasheet

CCR6 Antibody (MM0066-3L1) - Azide and BSA Free NBP2-12131

Unit Size: 0.1 mg

Aliquot and store at -20C or -80C. Avoid freeze-thaw cycles.

www.novusbio.com



technical@novusbio.com

Reviews: 1 Publications: 1

Protocols, Publications, Related Products, Reviews, Research Tools and Images at:
www.novusbio.com/NBP2-12131

Updated 4/20/2025 v.20.1

Earn rewards for product
reviews and publications.

Submit a publication at www.novusbio.com/publications

Submit a review at www.novusbio.com/reviews/destination/NBP2-12131



NBP2-12131

CCR6 Antibody (MM0066-3L1) - Azide and BSA Free

Product Information	
Unit Size	0.1 mg
Concentration	LYOPH mg/ml
Storage	Aliquot and store at -20C or -80C. Avoid freeze-thaw cycles.
Clonality	Monoclonal
Clone	MM0066-3L1
Preservative	No Preservative
Reconstitution Instructions	Reconstitute with sterilized PBS to a final concentration of 0.5 mg/ml.
Isotype	IgG2
Purity	Protein G purified
Buffer	Lyophilized from a 0.2 um filtered solution in PBS. 0.025 mg size is provided in liquid form, PBS

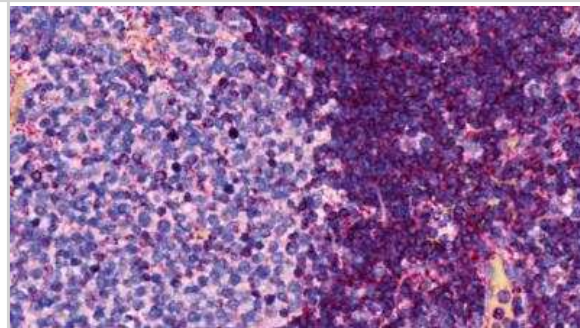
Product Description	
Host	Mouse
Gene ID	1235
Gene Symbol	CCR6
Species	Human
Specificity/Sensitivity	Detects human CCR6, not other CCRs
Immunogen	Human CCR6 transfected 293 cells

Product Application Details	
Applications	Western Blot, Flow Cytometry, Immunohistochemistry, Immunohistochemistry-Frozen, Immunohistochemistry-Paraffin, CyTOF-ready
Recommended Dilutions	Western Blot, Flow Cytometry 1:100-1:800, Immunohistochemistry 1:50-1:200, Immunohistochemistry-Paraffin 15 ug/ml, Immunohistochemistry-Frozen 1:50-1:200, CyTOF-ready
Application Notes	This antibody is Cytof ready.

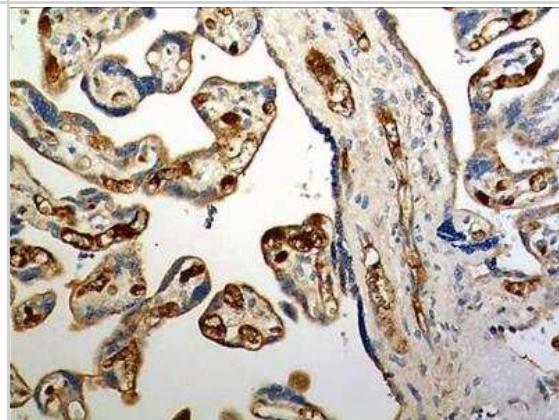


Images

Immunohistochemistry-Paraffin: CCR6 Antibody (MM0066-3L1) [NBP2-12131] - Immunohistochemical analysis of CCR6 in paraffin embedded gut associated lymphoid tissue (human colon) using anti-CCR6 antibody. Image from verified customer review.



Immunohistochemistry-Paraffin: CCR6 Antibody (MM0066-3L1) [NBP2-12131] - 4% PFA fixed and paraffin embedded human placental tissue section (4um) is subjected to IHC staining. Tissue was treated with 15ug/ml Proteinase K for antigen retrieval before IHC is applied.



Publications

Paroni M, Leccese G, Ranzani V et al. An intestinal Th17 subset is associated with inflammation in Crohn's Disease and activated by adherent-invasive Escherichia coli (AIEC) Journal of Crohn's & colitis 2023-07-18 [PMID: 37462681] (IHC-P, Human)



Novus Biologicals USA

10730 E. Briarwood Avenue
Centennial, CO 80112
USA
Phone: 303.730.1950
Toll Free: 1.888.506.6887
Fax: 303.730.1966
nb-customerservice@bio-techne.com

Bio-Techne Canada

21 Canmotor Ave
Toronto, ON M8Z 4E6
Canada
Phone: 905.827.6400
Toll Free: 855.668.8722
Fax: 905.827.6402
canada.inquires@bio-techne.com

Bio-Techne Ltd

19 Barton Lane
Abingdon Science Park
Abingdon, OX14 3NB, United Kingdom
Phone: (44) (0) 1235 529449
Free Phone: 0800 37 34 15
Fax: (44) (0) 1235 533420
info.EMEA@bio-techne.com

General Contact Information

www.novusbio.com
Technical Support: nb-technical@bio-
techne.com
Orders: nb-customerservice@bio-techne.com
General: novus@novusbio.com

Limitations

This product is for research use only and is not approved for use in humans or in clinical diagnosis. Primary Antibodies are guaranteed for 1 year from date of receipt.

For more information on our 100% guarantee, please visit www.novusbio.com/guarantee

Earn gift cards/discounts by submitting a review: www.novusbio.com/reviews/submit/NBP2-12131

Earn gift cards/discounts by submitting a publication using this product:
www.novusbio.com/publications

