

# Product Datasheet

## RIPK1/RIP1 Antibody (7H10)

### NBP2-11523

Unit Size: 0.05 ml

Store at 4C short term. Aliquot and store at -20C long term. Avoid freeze-thaw cycles.

[www.novusbio.com](http://www.novusbio.com)



[technical@novusbio.com](mailto:technical@novusbio.com)

Protocols, Publications, Related Products, Reviews, Research Tools and Images at:  
[www.novusbio.com/NBP2-11523](http://www.novusbio.com/NBP2-11523)

Updated 1/26/2022 v.20.1

Earn rewards for product  
reviews and publications.

Submit a publication at [www.novusbio.com/publications](http://www.novusbio.com/publications)

Submit a review at [www.novusbio.com/reviews/destination/NBP2-11523](http://www.novusbio.com/reviews/destination/NBP2-11523)



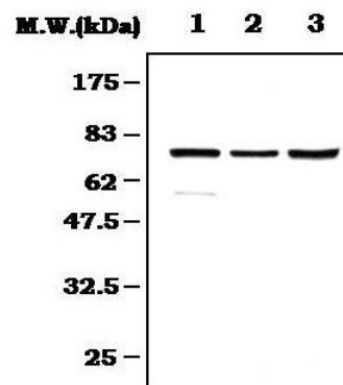
**NBP2-11523****RIPK1/RIP1 Antibody (7H10)**

<b>Product Information</b>	
<b>Unit Size</b>	0.05 ml
<b>Concentration</b>	1 mg/ml
<b>Storage</b>	Store at 4C short term. Aliquot and store at -20C long term. Avoid freeze-thaw cycles.
<b>Clonality</b>	Monoclonal
<b>Clone</b>	7H10
<b>Preservative</b>	0.03% Sodium Azide
<b>Isotype</b>	IgG2b Kappa
<b>Purity</b>	Ammonium sulfate precipitation
<b>Buffer</b>	HEPES, 0.01% BSA, 0.15M NaCl and 50% Glycerol
<b>Product Description</b>	
<b>Host</b>	Mouse
<b>Gene ID</b>	8737
<b>Gene Symbol</b>	RIPK1
<b>Species</b>	Human, Mouse, Rat
<b>Reactivity Notes</b>	Please note that this antibody is reactive to Mouse and derived from the same host, Mouse. Mouse-On-Mouse blocking reagent may be needed for IHC and ICC experiments to reduce high background signal. You can find these reagents under catalog numbers PK-2200-NB and MP-2400-NB. Please contact Technical Support if you have any questions.
<b>Immunogen</b>	Recombinant human protein purified from E. coli (RIPK1/RIP1).
<b>Product Application Details</b>	
<b>Applications</b>	Western Blot, Immunohistochemistry, Immunohistochemistry-Paraffin, Immunoprecipitation
<b>Recommended Dilutions</b>	Western Blot 1:500-1:2000, Immunohistochemistry, Immunoprecipitation 1:10-1:500, Immunohistochemistry-Paraffin 1:200

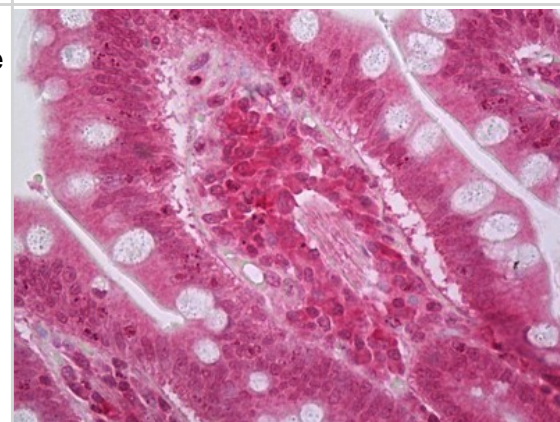


## Images

Western Blot: RIPK1/RIP1 Antibody (7H10) [NBP2-11523] - Analysis of anti-RIPK1 /RIP antibody with Lane 1: K562 cell lysate; Lane 2: HeLa cell lysate; Lane 3: SK-N-MC cell lysate.



Immunohistochemistry-Paraffin: RIPK1/RIP1 Antibody (7H10) [NBP2-11523] - Analysis of anti-RIPK1 /RIP antibody with human small intestine at dilution 1:200.





### **Novus Biologicals USA**

10730 E. Briarwood Avenue  
Centennial, CO 80112  
USA  
Phone: 303.730.1950  
Toll Free: 1.888.506.6887  
Fax: 303.730.1966  
novus@novusbio.com

### **Bio-Techne Canada**

21 Canmotor Ave  
Toronto, ON M8Z 4E6  
Canada  
Phone: 905.827.6400  
Toll Free: 855.668.8722  
Fax: 905.827.6402  
canada.inquires@bio-techne.com

### **Bio-Techne Ltd**

19 Barton Lane  
Abingdon Science Park  
Abingdon, OX14 3NB, United Kingdom  
Phone: (44) (0) 1235 529449  
Free Phone: 0800 37 34 15  
Fax: (44) (0) 1235 533420  
info.EMEA@bio-techne.com

### **General Contact Information**

www.novusbio.com  
Technical Support: technical@novusbio.com  
Orders: orders@novusbio.com  
General: novus@novusbio.com

### **Limitations**

This product is for research use only and is not approved for use in humans or in clinical diagnosis. Primary Antibodies are guaranteed for 1 year from date of receipt.

For more information on our 100% guarantee, please visit [www.novusbio.com/guarantee](http://www.novusbio.com/guarantee)

Earn gift cards/discounts by submitting a review: [www.novusbio.com/reviews/submit/NBP2-11523](http://www.novusbio.com/reviews/submit/NBP2-11523)

Earn gift cards/discounts by submitting a publication using this product:  
[www.novusbio.com/publications](http://www.novusbio.com/publications)

