

# Product Datasheet

## **PARD3/Par3 Antibody** **NBP2-11253**

Unit Size: 0.1 mg

Store at 4C short term. Aliquot and store at -20C long term. Avoid freeze-thaw cycles.

[www.novusbio.com](http://www.novusbio.com)



[technical@novusbio.com](mailto:technical@novusbio.com)

Protocols, Publications, Related Products, Reviews, Research Tools and Images at:  
[www.novusbio.com/NBP2-11253](http://www.novusbio.com/NBP2-11253)

Updated 10/23/2024 v.20.1

Earn rewards for product  
reviews and publications.

Submit a publication at [www.novusbio.com/publications](http://www.novusbio.com/publications)

Submit a review at [www.novusbio.com/reviews/destination/NBP2-11253](http://www.novusbio.com/reviews/destination/NBP2-11253)



**NBP2-11253****PAR3/Par3 Antibody**

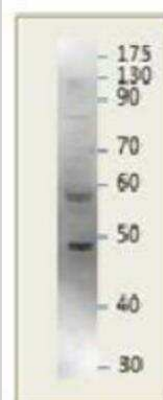
| <b>Product Information</b> |                                                                                        |
|----------------------------|----------------------------------------------------------------------------------------|
| <b>Unit Size</b>           | 0.1 mg                                                                                 |
| <b>Concentration</b>       | 0.5 mg/ml                                                                              |
| <b>Storage</b>             | Store at 4C short term. Aliquot and store at -20C long term. Avoid freeze-thaw cycles. |
| <b>Clonality</b>           | Polyclonal                                                                             |
| <b>Preservative</b>        | 0.02% Sodium Azide                                                                     |
| <b>Isotype</b>             | IgG                                                                                    |
| <b>Purity</b>              | Immunogen affinity purified                                                            |
| <b>Buffer</b>              | Tris/Glycine buffer, pH 7.4-7.8, HEPES,BSA 0.5%, glycerol 30%.                         |

| <b>Product Description</b>     |                                                                                                                                                                                                                                                                                                                                                  |
|--------------------------------|--------------------------------------------------------------------------------------------------------------------------------------------------------------------------------------------------------------------------------------------------------------------------------------------------------------------------------------------------|
| <b>Host</b>                    | Rabbit                                                                                                                                                                                                                                                                                                                                           |
| <b>Gene ID</b>                 | 56288                                                                                                                                                                                                                                                                                                                                            |
| <b>Gene Symbol</b>             | PAR3                                                                                                                                                                                                                                                                                                                                             |
| <b>Species</b>                 | Human, Mouse, Rat                                                                                                                                                                                                                                                                                                                                |
| <b>Reactivity Notes</b>        | Mouse                                                                                                                                                                                                                                                                                                                                            |
| <b>Specificity/Sensitivity</b> | This antibody detects a band of approximately 48kDa PAR3 protein in samples. The antibody also labels a 58kDa bands in PAR3 samples, probably represents either an uncharacterized variant of PAR3 or a non-specific protein. Further experiments are needed to address these possibilities                                                      |
| <b>Immunogen</b>               | Synthetic peptide from amino acids 31-342 corresponding to rat PAR2 protein from the following sequence, was selected from the unique region of the mouse PAR3 protein, peptide was post-synthetically modified to achieve highest antigenicity before used for coupling to KLH using heterobifunctional cross linker for immunogen preparation. |

| <b>Product Application Details</b> |                                                                                                                  |
|------------------------------------|------------------------------------------------------------------------------------------------------------------|
| <b>Applications</b>                | Western Blot, ELISA, Immunocytochemistry/ Immunofluorescence, Immunohistochemistry, Immunoprecipitation          |
| <b>Recommended Dilutions</b>       | Western Blot 1:250, ELISA, Immunohistochemistry, Immunocytochemistry/ Immunofluorescence, Immunoprecipitation    |
| <b>Application Notes</b>           | Antibodies to PAR3 label approximately 48kDa protein in Western blot positive control and several other tissues. |

**Images**

Western Blot: PAR3 Antibody [NBP2-11253] - using Sample and antibody. Antibody was diluted 1:500 in Dilution Buffer. MW of PAR3 is 48kDa.





### **Novus Biologicals USA**

10730 E. Briarwood Avenue  
Centennial, CO 80112  
USA  
Phone: 303.730.1950  
Toll Free: 1.888.506.6887  
Fax: 303.730.1966  
nb-customerservice@bio-techne.com

### **Bio-Techne Canada**

21 Canmotor Ave  
Toronto, ON M8Z 4E6  
Canada  
Phone: 905.827.6400  
Toll Free: 855.668.8722  
Fax: 905.827.6402  
canada.inquires@bio-techne.com

### **Bio-Techne Ltd**

19 Barton Lane  
Abingdon Science Park  
Abingdon, OX14 3NB, United Kingdom  
Phone: (44) (0) 1235 529449  
Free Phone: 0800 37 34 15  
Fax: (44) (0) 1235 533420  
info.EMEA@bio-techne.com

### **General Contact Information**

www.novusbio.com  
Technical Support: nb-technical@bio-techne.com  
Orders: nb-customerservice@bio-techne.com  
General: novus@novusbio.com

### **Products Related to NBP2-11253**

---

|               |                                                     |
|---------------|-----------------------------------------------------|
| HAF008        | Goat anti-Rabbit IgG Secondary Antibody [HRP]       |
| NB7160        | Goat anti-Rabbit IgG (H+L) Secondary Antibody [HRP] |
| NBP2-24891    | Rabbit IgG Isotype Control                          |
| NBP1-88861PEP | PAR3/Par3 Recombinant Protein Antigen               |

---

### **Limitations**

This product is for research use only and is not approved for use in humans or in clinical diagnosis. Primary Antibodies are guaranteed for 1 year from date of receipt.

For more information on our 100% guarantee, please visit [www.novusbio.com/guarantee](http://www.novusbio.com/guarantee)

Earn gift cards/discounts by submitting a review: [www.novusbio.com/reviews/submit/NBP2-11253](http://www.novusbio.com/reviews/submit/NBP2-11253)

Earn gift cards/discounts by submitting a publication using this product:  
[www.novusbio.com/publications](http://www.novusbio.com/publications)

