

Product Datasheet

RNA Polymerase II/POLR2A [p Ser1619] Antibody NBP2-04145-0.1mg

Unit Size: 0.1 mg

Store at -20C. Avoid freeze-thaw cycles.

www.novusbio.com



technical@novusbio.com

Publications: 1

Protocols, Publications, Related Products, Reviews, Research Tools and Images at:
www.novusbio.com/NBP2-04145

Updated 2/5/2017 v.20.1

Earn rewards for product
reviews and publications.

Submit a publication at www.novusbio.com/publications

Submit a review at www.novusbio.com/reviews/destination/NBP2-04145

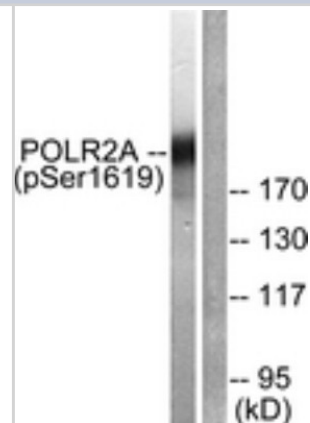


NBP2-04145-0.1mg**RNA Polymerase II/POLR2A [p Ser1619] Antibody**

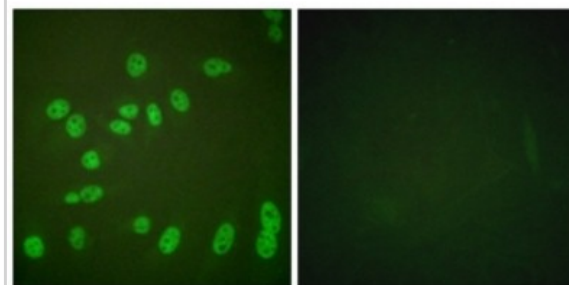
Product Information	
Unit Size	0.1 mg
Concentration	1.0 mg/ml
Storage	Store at -20C. Avoid freeze-thaw cycles.
Clonality	Polyclonal
Preservative	0.02% Sodium Azide
Purity	Immunogen affinity purified
Buffer	PBS (without Mg ²⁺ and Ca ²⁺ , pH 7.4), 0.15M NaCl and 50% Glycerol
Product Description	
Host	Rabbit
Gene ID	5430
Gene Symbol	POLR2A
Species	Human, Mouse, Rat
Reactivity Notes	Human, Mouse and Rat
Specificity/Sensitivity	POLR2A (phospho-Ser1619) antibody detects endogenous levels of POLR2A only when phosphorylated at Human Ser1619, Mouse Ser1619 or Rat Ser1598.
Immunogen	The antiserum was produced against synthesized phosphopeptide derived from human POLR2A around the phosphorylation site of serine 1619 (P-T-S [^] P-P-S). (C-terminal)
Product Application Details	
Applications	Western Blot, ELISA, Immunocytochemistry/Immunofluorescence, Immunohistochemistry, Immunohistochemistry-Paraffin
Recommended Dilutions	Western Blot 1:500-1:1000, ELISA 1:10000, Immunohistochemistry 1:50-1:100, Immunocytochemistry/Immunofluorescence 1:100-1:500, Immunohistochemistry-Paraffin 1:50-1:100

Images

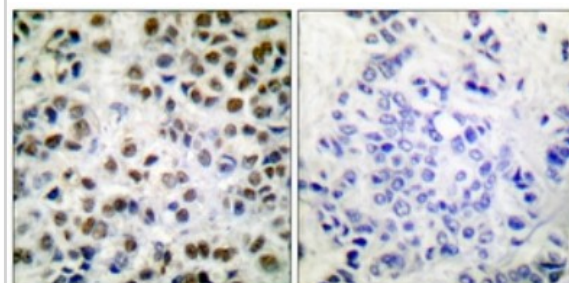
Western Blot: RNA polymerase II [p Ser1619] Antibody [NBP2-04145] - Analysis of extracts from COS7 cells treated with EGF 200ng/ml 30', using RNA polymerase II (Phospho-Ser1619) Antibody. The lane on the right is treated with the synthesized peptide.



Immunocytochemistry/Immunofluorescence: RNA polymerase II [p Ser1619] Antibody [NBP2-04145] - Analysis of HeLa cells treated with PMA 125ng/ml 30', using RNA polymerase II (Phospho-Ser1619) Antibody. The picture on the right is treated with the synthesized peptide.



Immunohistochemistry-Paraffin: RNA polymerase II [p Ser1619] Antibody [NBP2-04145] - Analysis of paraffin-embedded human breast carcinoma, using RNA polymerase II (Phospho-Ser1619) Antibody. The picture on the right is treated with the synthesized peptide.



Publications

Olaf R Mook. Mol. Cancer Ther; 6: 833 - 843. Mar-07. [PMID: 17363479]



Novus Biologicals USA

10730 E. Briarwood Avenue
Centennial, CO 80112
USA

Phone: 303.730.1950
Toll Free: 1.888.506.6887
Fax: 303.730.1966
novus@novusbio.com

Novus Biologicals Canada

461 North Service Road West, Unit B37
Oakville, ON L6M 2V5
Canada

Phone: 905.827.6400
Toll Free: 855.668.8722
Fax: 905.827.6402
canada@novusbio.com

Novus Biologicals Europe

19 Barton Lane
Abingdon Science Park
Abingdon, OX14 3NB, United Kingdom

Phone: (44) (0) 1235 529449
Free Phone: 0800 37 34 15
Fax: (44) (0) 1235 533420
info@bio-techne.com

General Contact Information

www.novusbio.com
Technical Support: technical@novusbio.com
Orders: orders@novusbio.com
General: novus@novusbio.com

Limitations

This product is for research use only and is not approved for use in humans or in clinical diagnosis. Primary Antibodies are guaranteed for 1 year from date of receipt.

For more information on our 100% guarantee, please visit www.novusbio.com/guarantee

Earn gift cards/discounts by submitting a review: www.novusbio.com/reviews/submit/NBP2-04145

Earn gift cards/discounts by submitting a publication using this product:
www.novusbio.com/publications

