

Product Datasheet

Podoplanin Antibody (NZ-1.2) - Azide Free NBP2-03954

Unit Size: 0.05 mg

Store at 4C short term. Aliquot and store at -20C long term. Avoid freeze-thaw cycles.

www.novusbio.com



technical@novusbio.com

Protocols, Publications, Related Products, Reviews, Research Tools and Images at:
www.novusbio.com/NBP2-03954

Updated 7/28/2024 v.20.1

Earn rewards for product
reviews and publications.

Submit a publication at www.novusbio.com/publications

Submit a review at www.novusbio.com/reviews/destination/NBP2-03954



NBP2-03954

Podoplanin Antibody (NZ-1.2) - Azide Free

Product Information

Unit Size	0.05 mg
Concentration	Please see the vial label for concentration. If unlisted please contact technical services.
Storage	Store at 4C short term. Aliquot and store at -20C long term. Avoid freeze-thaw cycles.
Clonality	Monoclonal
Clone	NZ-1.2
Preservative	No Preservative
Isotype	IgG2a Lambda
Purity	Protein G purified
Buffer	PBS

Product Description

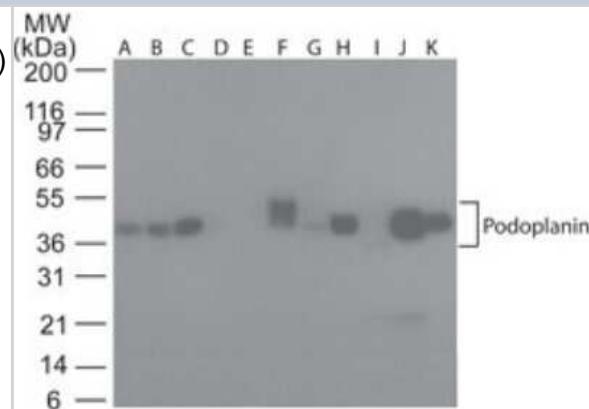
Host	Rat
Gene ID	10630
Gene Symbol	PDPN
Species	Human
Marker	Lymphatic Endothelium Marker
Immunogen	A synthetic peptide corresponding to amino acids 38-70 from the platelet-aggregation-stimulating (PLAG) domain of human podoplanin was used as immunogen.

Product Application Details

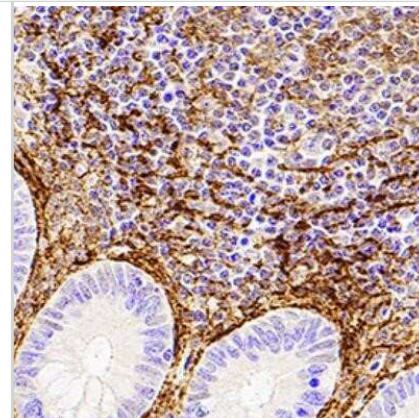
Applications	Western Blot, Flow Cytometry, Immunocytochemistry/ Immunofluorescence, Immunohistochemistry-Paraffin, CyTOF-ready
Recommended Dilutions	Western Blot 3-5 ug/ml, Flow Cytometry 1ul/1 million cells, Immunocytochemistry/ Immunofluorescence, Immunohistochemistry-Paraffin, CyTOF-ready

Images

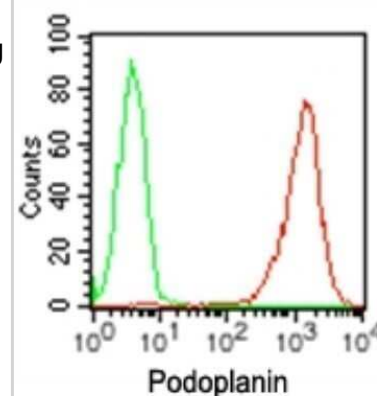
Western Blot: Podoplanin Antibody (NZ-1.2) - Azide Free [NBP2-03954] - Lysate from human A) Brain, B) Heart, C) Small Intestine, D) Kidney, E) Liver, F) Lung, G) Muscle, H) Stomach, I) Spleen, J) Ovary, and K) Testis probed with podoplanin antibody at 5 ug/ml. human tissue Insta-blot , goat anti-rat Ig HRP secondary antibody and PicoTect ECL substrate solution were used for this test.



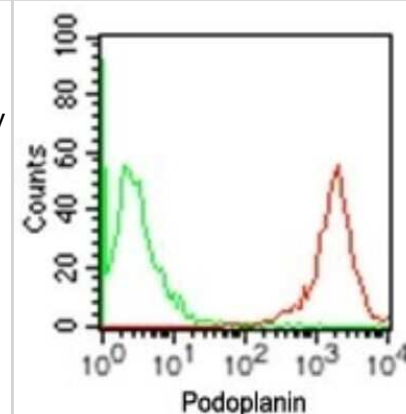
Immunohistochemistry-Paraffin: Podoplanin Antibody (NZ-1.2) - Azide Free [NBP2-03954] - Podoplanin (NZ-1.2) was detected in immersion fixed paraffin-embedded sections of human appendix using Rat Anti-Human Podoplanin Monoclonal Antibody (Catalog # NBP2-03952) at 0.5 ug/mL for 1 hour at room temperature followed by incubation with the Anti-Rat IgG VisUCyte™ HRP Polymer Antibody (Catalog # VC005). Tissue was stained using DAB (brown) and counterstained with hematoxylin (blue). Specific staining was localized to the cell surface. Image using the standard format of this product.



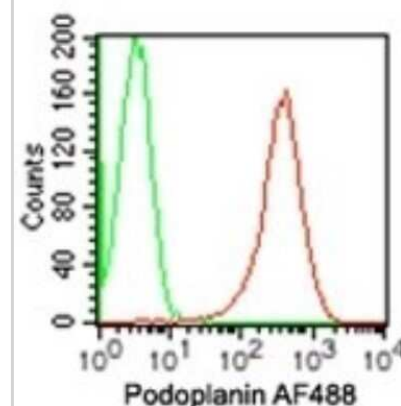
Flow Cytometry: Podoplanin Antibody (NZ-1.2) - Azide Free [NBP2-03954] - Analysis using the PE conjugate of NBP2-03952. Staining using Podoplanin antibody. Human NCCIT cells were probed using 10 ul (0.2 ug) of Podoplanin antibody (red) and 0.2 ug of isotype control antibody (green).



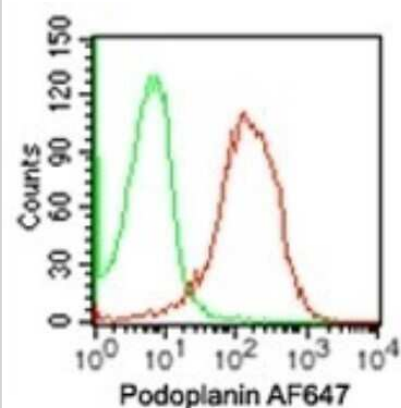
Flow Cytometry: Podoplanin Antibody (NZ-1.2) - Azide Free [NBP2-03954] - Analysis using Podoplanin antibody. Human NCCIT cells were probed using 0.2 ug of Podoplanin antibody (red) and 0.2 ug of isotype control antibody (green). Flow kit and anti-rat PE secondary this antibody were used for this test.



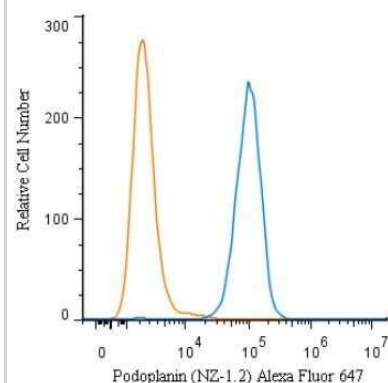
Flow Cytometry: Podoplanin Antibody (NZ-1.2) - Azide Free [NBP2-03954] - Analysis using the Alexa Fluor (R) 488 conjugate of NBP2-03952. Staining using Podoplanin antibody. Human NCCIT cells were probed using 10 ul (0.15 ug) of Podoplanin antibody (red) and 0.15 ug of isotype control antibody (green).



Flow Cytometry: Podoplanin Antibody (NZ-1.2) - Azide Free [NBP2-03954] - Analysis using the Alexa Fluor (R) 647 conjugate of NBP2-03952. Staining using Podoplanin antibody. Human NCCIT cells were probed using 10 ul (0.15 ug) of Podoplanin antibody (red) and 0.15 ug of isotype control antibody (green).



Flow Cytometry: Podoplanin Antibody (NZ-1.2) - Azide Free [NBP2-03954] - A surface stain was performed on Ntera2 cells with Podoplanin Antibody (NZ-1.2) NBP2-03952AF647 (blue) and a matched isotype control (orange). Cells were incubated in an antibody dilution of 2.5 ug/mL for 20 minutes at room temperature. Both antibodies were directly conjugated to Alexa Fluor 647.



Copyright © 2020 Novus Biologicals



Novus Biologicals USA

10730 E. Briarwood Avenue
Centennial, CO 80112
USA
Phone: 303.730.1950
Toll Free: 1.888.506.6887
Fax: 303.730.1966
nb-customerservice@bio-techne.com

Bio-Techne Canada

21 Canmotor Ave
Toronto, ON M8Z 4E6
Canada
Phone: 905.827.6400
Toll Free: 855.668.8722
Fax: 905.827.6402
canada.inquires@bio-techne.com

Bio-Techne Ltd

19 Barton Lane
Abingdon Science Park
Abingdon, OX14 3NB, United Kingdom
Phone: (44) (0) 1235 529449
Free Phone: 0800 37 34 15
Fax: (44) (0) 1235 533420
info.EMEA@bio-techne.com

General Contact Information

www.novusbio.com
Technical Support: nb-technical@bio-techne.com
Orders: nb-customerservice@bio-techne.com
General: novus@novusbio.com

Limitations

This product is for research use only and is not approved for use in humans or in clinical diagnosis. Primary Antibodies are guaranteed for 1 year from date of receipt.

For more information on our 100% guarantee, please visit www.novusbio.com/guarantee

Earn gift cards/discounts by submitting a review: www.novusbio.com/reviews/submit/NBP2-03954

Earn gift cards/discounts by submitting a publication using this product:
www.novusbio.com/publications

