

Product Datasheet

DCLRE1B Antibody (OTI2B7)

NBP2-03563

Unit Size: 0.1 ml

Store at -20C. Avoid freeze-thaw cycles.

www.novusbio.com



technical@novusbio.com

Reviews: 1

Protocols, Publications, Related Products, Reviews, Research Tools and Images at:
www.novusbio.com/NBP2-03563

Updated 10/23/2024 v.20.1

Earn rewards for product
reviews and publications.

Submit a publication at www.novusbio.com/publications

Submit a review at www.novusbio.com/reviews/destination/NBP2-03563



NBP2-03563**DCLRE1B Antibody (OTI2B7)**

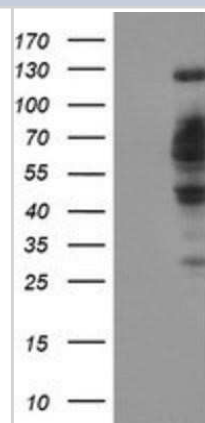
Product Information	
Unit Size	0.1 ml
Concentration	0.62 mg/ml
Storage	Store at -20C. Avoid freeze-thaw cycles.
Clonality	Monoclonal
Clone	OTI2B7
Preservative	0.02% Sodium Azide
Isotype	IgG1
Purity	Immunogen affinity purified
Buffer	PBS (pH 7.3), 1% BSA, 50% Glycerol
Target Molecular Weight	59.8 kDa

Product Description	
Host	Mouse
Gene ID	64858
Gene Symbol	DCLRE1B
Species	Human, Rat
Immunogen	Human recombinant protein fragment corresponding to amino acids 1-280 of human DCLRE1B(NP_073747) produced in E.coli.

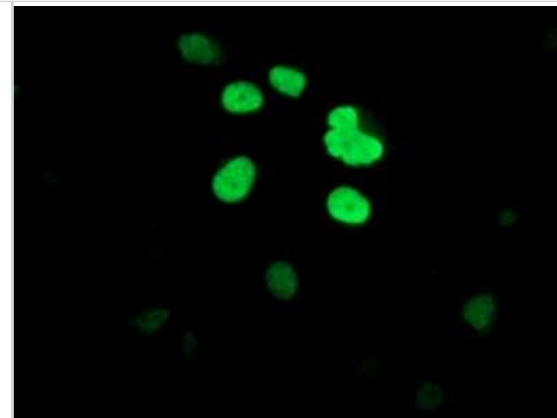
Product Application Details	
Applications	Western Blot, Flow Cytometry, Immunocytochemistry/ Immunofluorescence, Immunohistochemistry, Immunohistochemistry-Paraffin
Recommended Dilutions	Western Blot 1:200-500, Flow Cytometry 1:100, Immunohistochemistry 1:150, Immunocytochemistry/ Immunofluorescence, Immunohistochemistry-Paraffin 1:150

Images

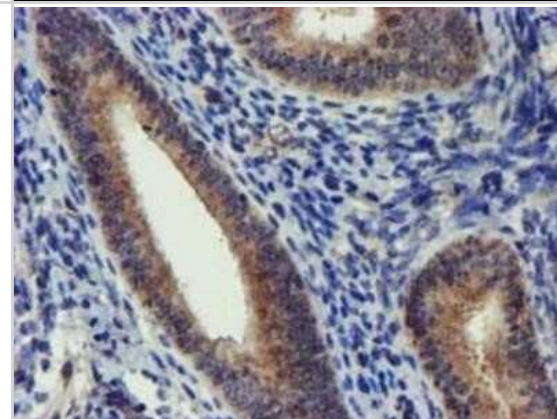
Western Blot: DCLRE1B Antibody (OTI2B7) [NBP2-03563] - HEK293T cells were transfected with the pCMV6-ENTRY control (Left lane) or pCMV6-ENTRY DCLRE1B (Right lane) cDNA for 48 hrs and lysed. Equivalent amounts of cell lysates (5 ug per lane) were separated by SDS-PAGE and immunoblotted with anti-DCLRE1B.



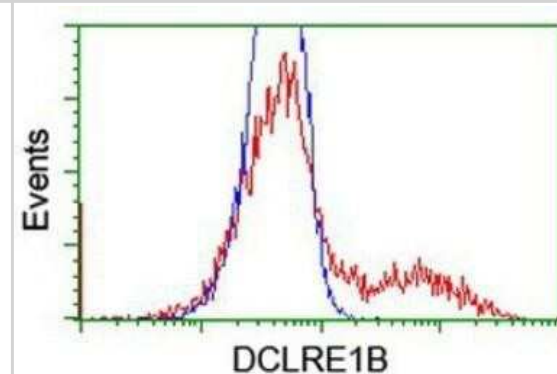
Immunocytochemistry/Immunofluorescence: DCLRE1B Antibody (OTI2B7) [NBP2-03563] - Staining of COS7 cells transiently transfected by pCMV6-ENTRY DCLRE1B .



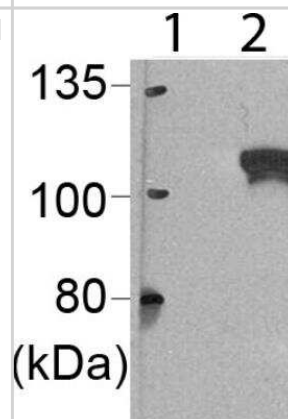
Immunohistochemistry-Paraffin: DCLRE1B Antibody (OTI2B7) [NBP2-03563] - Staining of paraffin-embedded Human endometrium tissue using anti-DCLRE1B mouse monoclonal antibody.



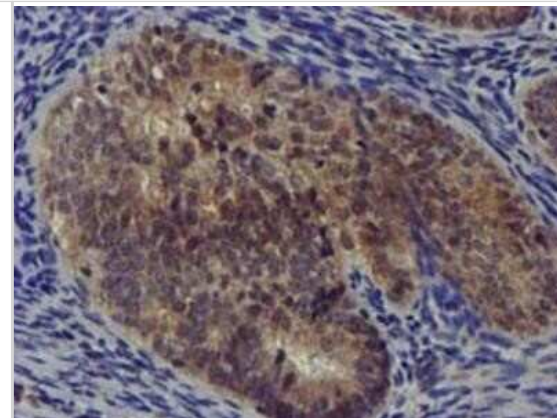
Flow Cytometry: DCLRE1B Antibody (OTI2B7) [NBP2-03563] - HEK293T cells transfected with either overexpression plasmid (Red) or empty vector control plasmid (Blue) were immunostained by anti-DCLRE1B antibody, and then analyzed by flow cytometry.



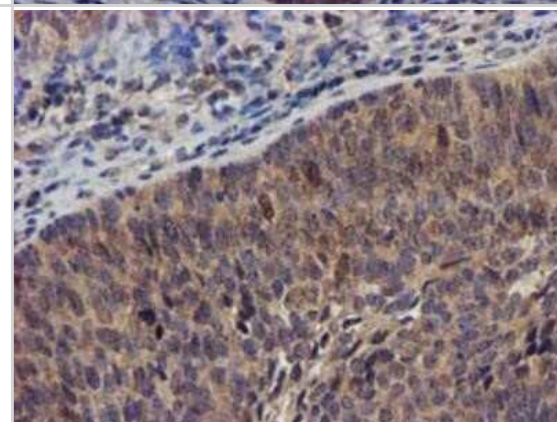
Western Blot: DCLRE1B Antibody (OTI2B7) [NBP2-03563] - 1) 293T cell lysate. 2) 293T cell transfected to overexpress 3xFlag-DCLRE1B. WB image submitted by a verified customer review.



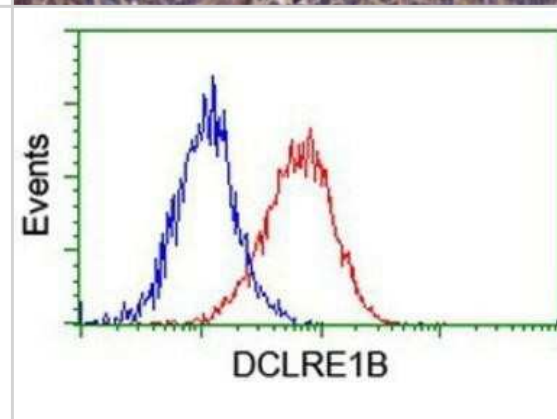
Immunohistochemistry-Paraffin: DCLRE1B Antibody (OTI2B7) [NBP2-03563] - Staining of paraffin-embedded Adenocarcinoma of Human endometrium tissue using anti-DCLRE1B mouse monoclonal antibody.



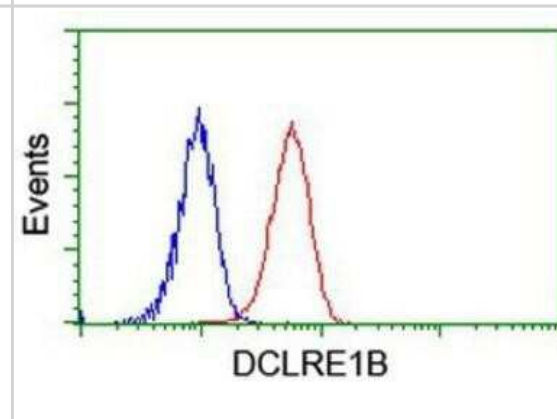
Immunohistochemistry-Paraffin: DCLRE1B Antibody (OTI2B7) [NBP2-03563] - Staining of paraffin-embedded Carcinoma of Human bladder tissue using anti-DCLRE1B mouse monoclonal antibody.



Flow Cytometry: DCLRE1B Antibody (OTI2B7) [NBP2-03563] - Analysis of Hela cells, using anti-DCLRE1B antibody, (Red), compared to a nonspecific negative control antibody (Blue).



Flow Cytometry: DCLRE1B Antibody (OTI2B7) [NBP2-03563] - Analysis of Jurkat cells, using anti-DCLRE1B antibody, (Red), compared to a nonspecific negative control antibody (Blue).





Novus Biologicals USA

10730 E. Briarwood Avenue
Centennial, CO 80112
USA
Phone: 303.730.1950
Toll Free: 1.888.506.6887
Fax: 303.730.1966
nb-customerservice@bio-techne.com

Bio-Techne Canada

21 Canmotor Ave
Toronto, ON M8Z 4E6
Canada
Phone: 905.827.6400
Toll Free: 855.668.8722
Fax: 905.827.6402
canada.inquires@bio-techne.com

Bio-Techne Ltd

19 Barton Lane
Abingdon Science Park
Abingdon, OX14 3NB, United Kingdom
Phone: (44) (0) 1235 529449
Free Phone: 0800 37 34 15
Fax: (44) (0) 1235 533420
info.EMEA@bio-techne.com

General Contact Information

www.novusbio.com
Technical Support: nb-technical@bio-techne.com
Orders: nb-customerservice@bio-techne.com
General: novus@novusbio.com

Products Related to NBP2-03563

HAF007	Goat anti-Mouse IgG Secondary Antibody [HRP]
NB720-B	Rabbit anti-Mouse IgG (H+L) Secondary Antibody [Biotin]
NBP1-97005-0.5mg	Mouse IgG1 Isotype Control (MG1)
NBP2-57379PEP	DCLRE1B Recombinant Protein Antigen

Limitations

This product is for research use only and is not approved for use in humans or in clinical diagnosis. Primary Antibodies are guaranteed for 1 year from date of receipt.

For more information on our 100% guarantee, please visit www.novusbio.com/guarantee

Earn gift cards/discounts by submitting a review: www.novusbio.com/reviews/submit/NBP2-03563

Earn gift cards/discounts by submitting a publication using this product:
www.novusbio.com/publications

