

# Product Datasheet

## XLF Antibody (OTI3E6) NBP2-03272

Unit Size: 0.1 ml

Store at -20C. Avoid freeze-thaw cycles.

[www.novusbio.com](http://www.novusbio.com)



[technical@novusbio.com](mailto:technical@novusbio.com)

Protocols, Publications, Related Products, Reviews, Research Tools and Images at:  
[www.novusbio.com/NBP2-03272](http://www.novusbio.com/NBP2-03272)

Updated 9/6/2018 v.20.1

Earn rewards for product  
reviews and publications.

Submit a publication at [www.novusbio.com/publications](http://www.novusbio.com/publications)

Submit a review at [www.novusbio.com/reviews/destination/NBP2-03272](http://www.novusbio.com/reviews/destination/NBP2-03272)



**NBP2-03272**

XLF Antibody (OTI3E6)

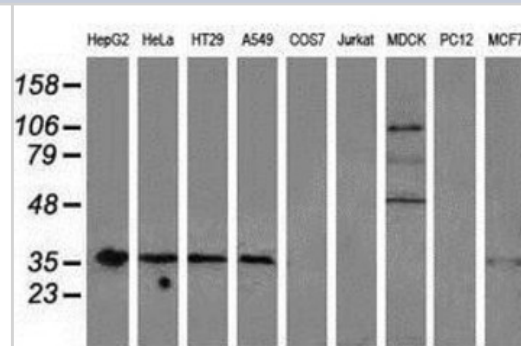
Product Information	
<b>Unit Size</b>	0.1 ml
<b>Concentration</b>	Please see the vial label for concentration. If unlisted please contact technical services.
<b>Storage</b>	Store at -20C. Avoid freeze-thaw cycles.
<b>Clonality</b>	Monoclonal
<b>Clone</b>	OTI3E6
<b>Preservative</b>	0.02% Sodium Azide
<b>Isotype</b>	IgG1
<b>Purity</b>	Immunogen affinity purified
<b>Buffer</b>	PBS (pH 7.3), 1.0% BSA and 50% Glycerol
<b>Target Molecular Weight</b>	33.2 kDa

Product Description	
<b>Host</b>	Mouse
<b>Gene ID</b>	79840
<b>Gene Symbol</b>	NHEJ1
<b>Species</b>	Human
<b>Reactivity Notes</b>	Human
<b>Immunogen</b>	Full length recombinant protein of human XLF (NP_079058) produced in HEK293T cells.

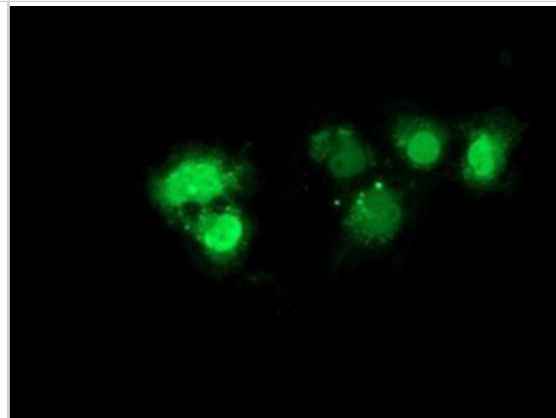
Product Application Details	
<b>Applications</b>	Western Blot, Flow Cytometry, Immunocytochemistry/Immunofluorescence, Immunohistochemistry, Immunohistochemistry-Paraffin
<b>Recommended Dilutions</b>	Western Blot 1:500-2000, Flow Cytometry 1:100, Immunohistochemistry 1:10-1:500, Immunocytochemistry/Immunofluorescence 1:100, Immunohistochemistry-Paraffin 1:150

**Images**

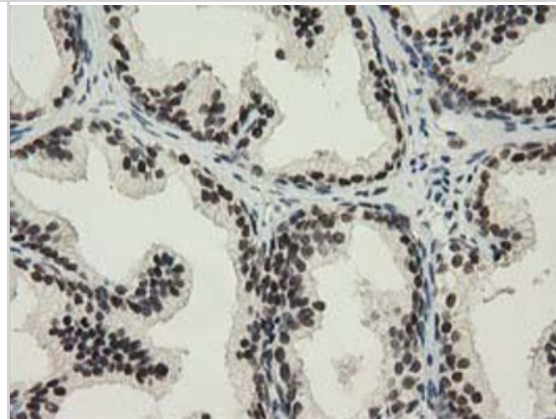
Western Blot: XLF Antibody (3E6) [NBP2-03272] Analysis of extracts (35ug) from 9 different cell lines by using anti-XLF monoclonal antibody.



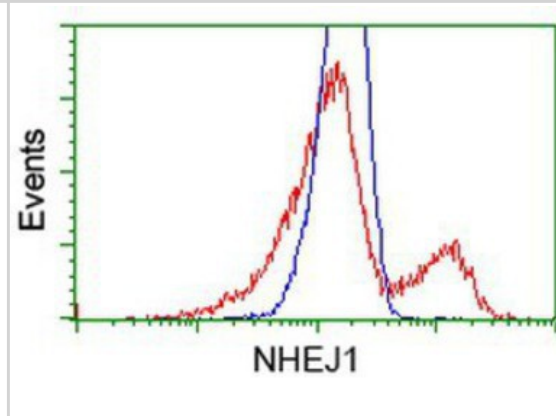
Immunocytochemistry/Immunofluorescence: XLF Antibody (3E6) [NBP2-03272] - Staining of COS7 cells transiently transfected by pCMV6-ENTRY XLF.



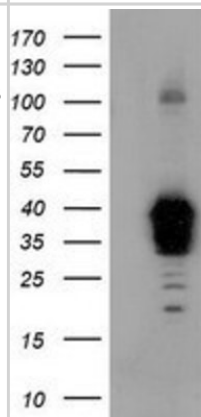
Immunohistochemistry-Paraffin: XLF Antibody (3E6) [NBP2-03272] - Staining of paraffin-embedded Human prostate tissue using anti-XLF mouse monoclonal antibody.



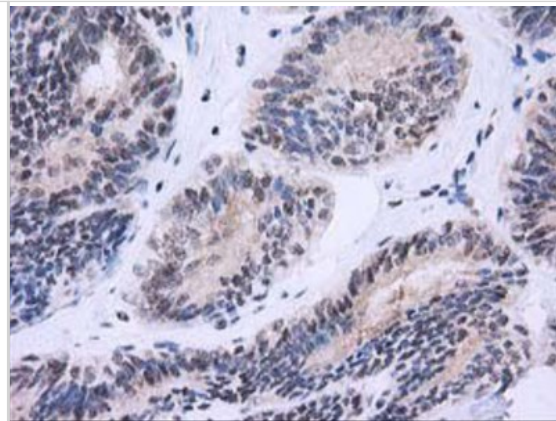
Flow Cytometry: XLF Antibody (3E6) [NBP2-03272] - HEK293T cells transfected with either overexpression plasmid (Red) or empty vector control plasmid (Blue) were immunostained by anti-XLF antibody, and then analyzed by flow cytometry.



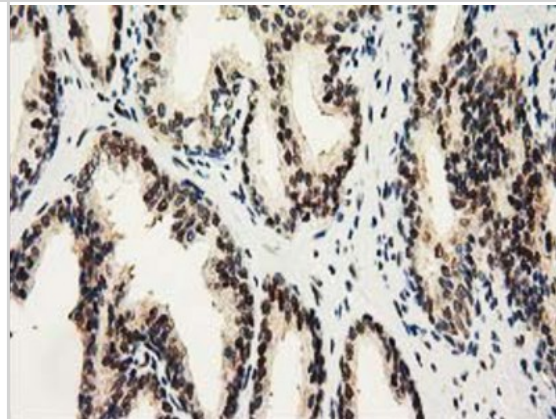
Western Blot: XLF Antibody (3E6) [NBP2-03272] - HEK293T cells were transfected with the pCMV6-ENTRY control (Left lane) or pCMV6-ENTRY XLF (Right lane) cDNA for 48 hrs and lysed. Equivalent amounts of cell lysates (5 ug per lane) were separated by SDS-PAGE and immunoblotted with anti-XLF.



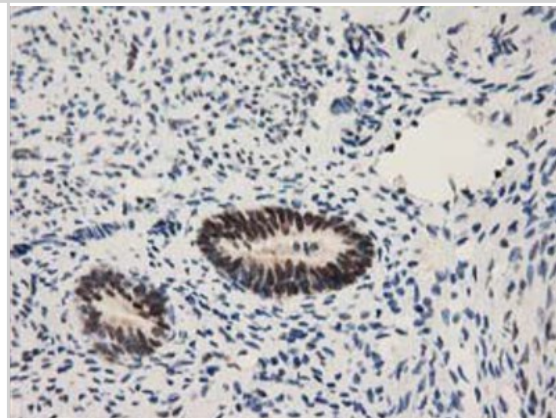
Immunohistochemistry-Paraffin: XLF Antibody (3E6) [NBP2-03272] - Staining of paraffin-embedded Adenocarcinoma of Human endometrium tissue using anti-XLF mouse monoclonal antibody.



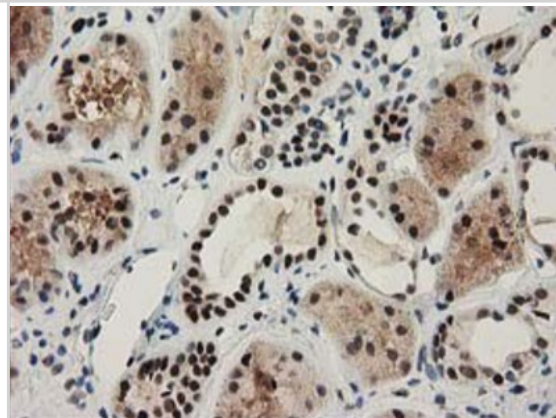
Immunohistochemistry-Paraffin: XLF Antibody (3E6) [NBP2-03272] - Staining of paraffin-embedded Carcinoma of Human prostate tissue using anti-XLF mouse monoclonal antibody.



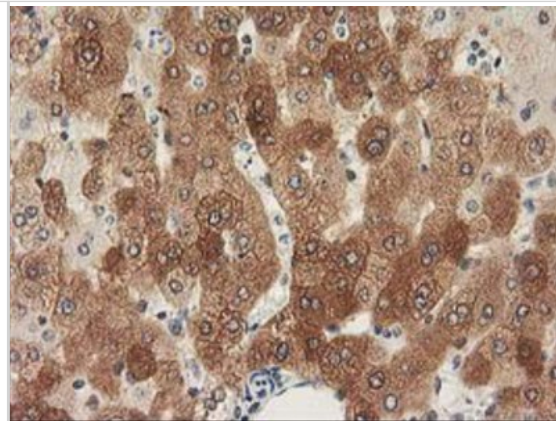
Immunohistochemistry-Paraffin: XLF Antibody (3E6) [NBP2-03272] - Staining of paraffin-embedded Human endometrium tissue using anti-XLF mouse monoclonal antibody.



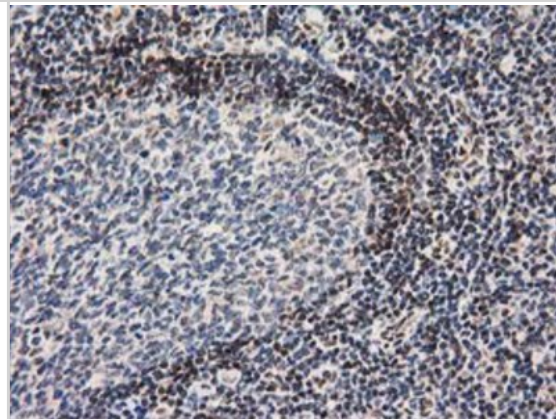
Immunohistochemistry-Paraffin: XLF Antibody (3E6) [NBP2-03272] - Staining of paraffin-embedded Human Kidney tissue using anti-XLF mouse monoclonal antibody.



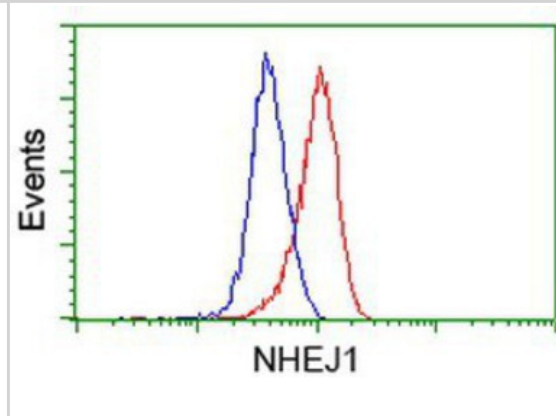
Immunohistochemistry-Paraffin: XLF Antibody (3E6) [NBP2-03272] - Staining of paraffin-embedded Human liver tissue using anti-XLF mouse monoclonal antibody.



Immunohistochemistry-Paraffin: XLF Antibody (3E6) [NBP2-03272] - Staining of paraffin-embedded Human lymph node tissue using anti-XLF mouse monoclonal antibody.



Flow Cytometry: XLF Antibody (3E6) [NBP2-03272] - Analysis of HeLa cells, using anti-XLF antibody, (Red), compared to a nonspecific negative control antibody (Blue).





### **Novus Biologicals USA**

10730 E. Briarwood Avenue  
Centennial, CO 80112  
USA

Phone: 303.730.1950  
Toll Free: 1.888.506.6887  
Fax: 303.730.1966  
novus@novusbio.com

### **Novus Biologicals Canada**

461 North Service Road West, Unit B37  
Oakville, ON L6M 2V5  
Canada

Phone: 905.827.6400  
Toll Free: 855.668.8722  
Fax: 905.827.6402  
canada@novusbio.com

### **Novus Biologicals Europe**

19 Barton Lane  
Abingdon Science Park  
Abingdon, OX14 3NB, United Kingdom

Phone: (44) (0) 1235 529449  
Free Phone: 0800 37 34 15  
Fax: (44) (0) 1235 533420  
info@bio-techne.com

### **General Contact Information**

www.novusbio.com  
Technical Support: technical@novusbio.com  
Orders: orders@novusbio.com  
General: novus@novusbio.com

### **Limitations**

This product is for research use only and is not approved for use in humans or in clinical diagnosis. Primary Antibodies are guaranteed for 1 year from date of receipt.

For more information on our 100% guarantee, please visit [www.novusbio.com/guarantee](http://www.novusbio.com/guarantee)

Earn gift cards/discounts by submitting a review: [www.novusbio.com/reviews/submit/NBP2-03272](http://www.novusbio.com/reviews/submit/NBP2-03272)

Earn gift cards/discounts by submitting a publication using this product:  
[www.novusbio.com/publications](http://www.novusbio.com/publications)

