

Product Datasheet

Cytochrome P450 1A2 Antibody (OTI8F1) NBP2-02563

Unit Size: 0.1 ml

Store at -20C. Avoid freeze-thaw cycles.

www.novusbio.com



technical@novusbio.com

Publications: 1

Protocols, Publications, Related Products, Reviews, Research Tools and Images at:
www.novusbio.com/NBP2-02563

Updated 10/23/2024 v.20.1

Earn rewards for product
reviews and publications.

Submit a publication at www.novusbio.com/publications

Submit a review at www.novusbio.com/reviews/destination/NBP2-02563



NBP2-02563

Cytochrome P450 1A2 Antibody (OTI8F1)

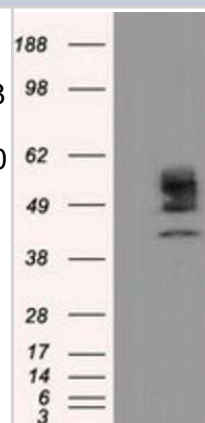
Product Information	
Unit Size	0.1 ml
Concentration	0.77 mg/ml
Storage	Store at -20C. Avoid freeze-thaw cycles.
Clonality	Monoclonal
Clone	OTI8F1
Preservative	0.02% Sodium Azide
Isotype	IgG2a
Purity	Immunogen affinity purified
Buffer	PBS (pH 7.3), 1.0% BSA and 50% Glycerol
Target Molecular Weight	58.2 kDa

Product Description	
Host	Mouse
Gene ID	1544
Gene Symbol	CYP1A2
Species	Human
Immunogen	Full length human recombinant protein of human CYP1A2 (NP_000752) produced in HEK293T cell.

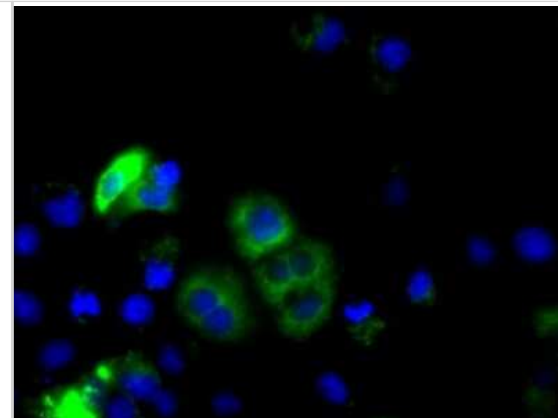
Product Application Details	
Applications	Western Blot, Flow Cytometry, Immunocytochemistry/ Immunofluorescence, Immunohistochemistry, Immunohistochemistry-Paraffin
Recommended Dilutions	Western Blot 1:2000, Flow Cytometry 1:100, Immunohistochemistry 1:50, Immunocytochemistry/ Immunofluorescence 1:100, Immunohistochemistry-Paraffin 1:50

Images

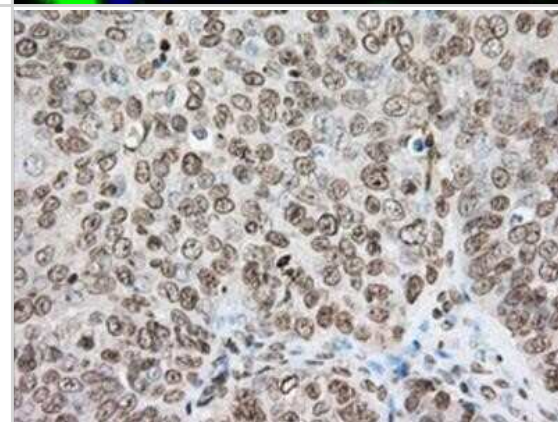
Western Blot: Cytochrome P450 1A2 Antibody (OTI8F1) [NBP2-02563] - HEK293T cells were transfected with the pCMV6-ENTRY control (Left lane) or pCMV6-ENTRY Cytochrome P450 1A2 (Right lane) cDNA for 48 hrs and lysed. Equivalent amounts of cell lysates (5 ug per lane) were separated by SDS-PAGE and immunoblotted with anti-Cytochrome P450 1A2.



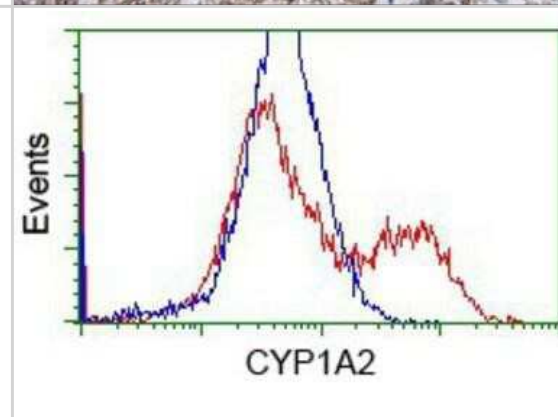
Immunocytochemistry/Immunofluorescence: Cytochrome P450 1A2 Antibody (OTI8F1) [NBP2-02563] - Staining of COS7 cells transiently transfected by pCMV6-ENTRY CYP1A2 .



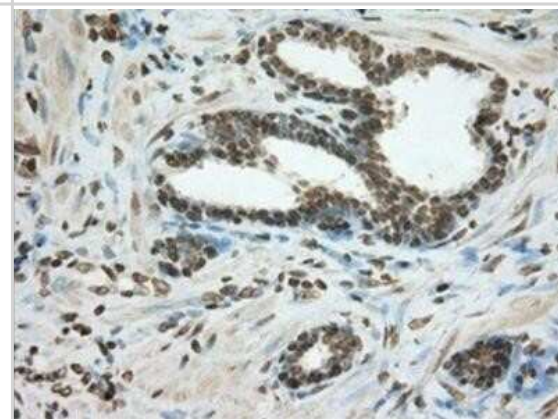
Immunohistochemistry-Paraffin: Cytochrome P450 1A2 Antibody (OTI8F1) [NBP2-02563] - Staining of paraffin-embedded Adenocarcinoma of Human ovary tissue using anti-Cytochrome P450 1A2 mouse monoclonal antibody.



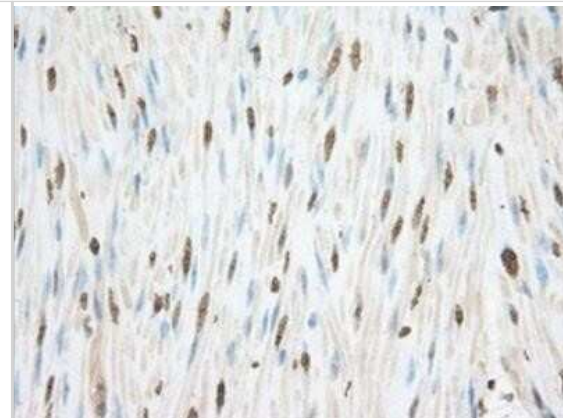
Flow Cytometry: Cytochrome P450 1A2 Antibody (OTI8F1) [NBP2-02563] - HEK293T cells transfected with either overexpression plasmid (Red) or empty vector control plasmid (Blue) were immunostained by anti-Cytochrome P450 1A2 antibody, and then analyzed by flow cytometry.



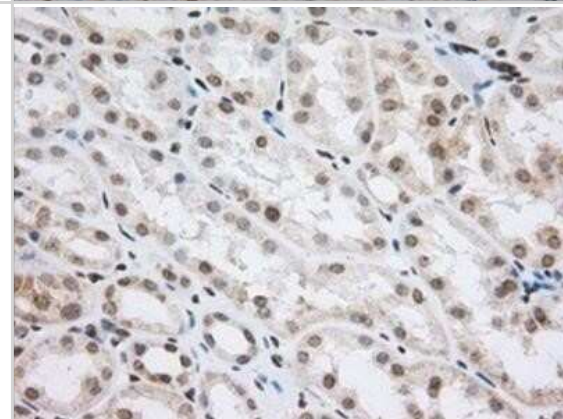
Immunohistochemistry-Paraffin: Cytochrome P450 1A2 Antibody (OTI8F1) [NBP2-02563] - Staining of paraffin-embedded Carcinoma of Human prostate tissue using anti-Cytochrome P450 1A2 mouse monoclonal antibody.



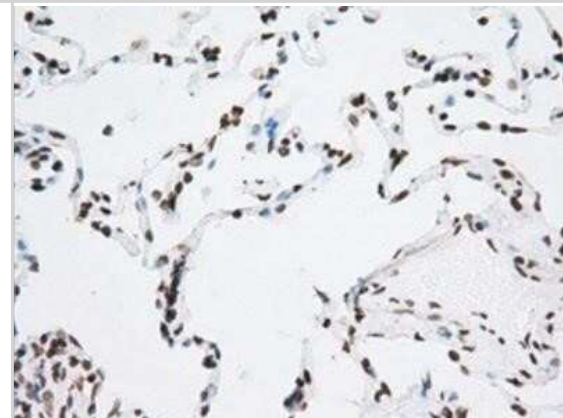
Immunohistochemistry-Paraffin: Cytochrome P450 1A2 Antibody (OTI8F1) [NBP2-02563] - Staining of paraffin-embedded Human colon tissue using anti-Cytochrome P450 1A2 mouse monoclonal antibody.



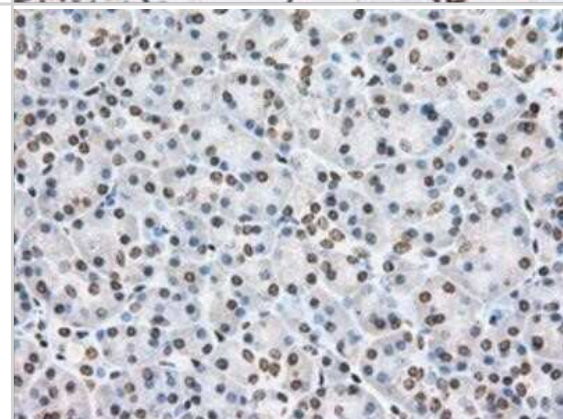
Immunohistochemistry-Paraffin: Cytochrome P450 1A2 Antibody (OTI8F1) [NBP2-02563] - Staining of paraffin-embedded Human Kidney tissue using anti-Cytochrome P450 1A2 mouse monoclonal antibody.



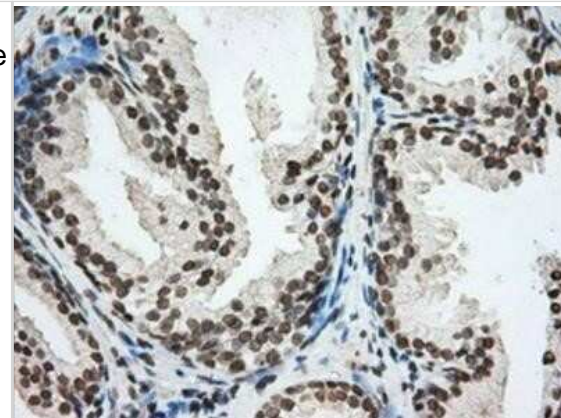
Immunohistochemistry-Paraffin: Cytochrome P450 1A2 Antibody (OTI8F1) [NBP2-02563] - Staining of paraffin-embedded Human lung tissue using anti-Cytochrome P450 1A2 mouse monoclonal antibody.



Immunohistochemistry-Paraffin: Cytochrome P450 1A2 Antibody (OTI8F1) [NBP2-02563] - Staining of paraffin-embedded Human pancreas tissue using anti-Cytochrome P450 1A2 mouse monoclonal antibody.



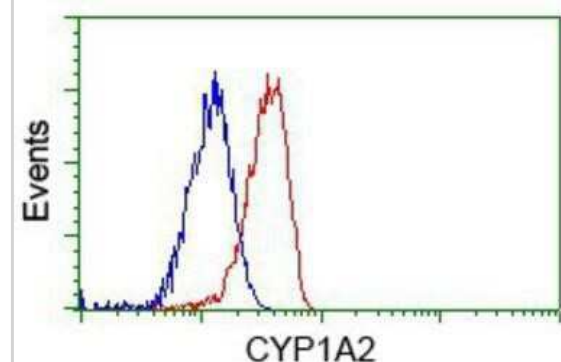
Immunohistochemistry-Paraffin: Cytochrome P450 1A2 Antibody (OTI8F1) [NBP2-02563] - Staining of paraffin-embedded Human prostate tissue using anti-Cytochrome P450 1A2 mouse monoclonal antibody.



Immunohistochemistry-Paraffin: Cytochrome P450 1A2 Antibody (OTI8F1) [NBP2-02563] - Staining of paraffin-embedded Adenocarcinoma of Human colon tissue using anti-Cytochrome P450 1A2 mouse monoclonal antibody.



Flow Cytometry: Cytochrome P450 1A2 Antibody (OTI8F1) [NBP2-02563] - Analysis of Jurkat cells, using anti-Cytochrome P450 1A2 antibody, (Red), compared to a nonspecific negative control antibody (Blue).



Publications

Wuensch T, Heucke N, Wizenty J et al. Hepatic CYP1A2 activity in liver tumors and the implications for preoperative volume-function analysis American Journal of Physiology-Gastrointestinal and Liver Physiology 2019-05-01 [PMID: 30869529] (Immunocytochemistry/ Immunofluorescence)



Novus Biologicals USA

10730 E. Briarwood Avenue
Centennial, CO 80112
USA
Phone: 303.730.1950
Toll Free: 1.888.506.6887
Fax: 303.730.1966
nb-customerservice@bio-techne.com

Bio-Techne Canada

21 Canmotor Ave
Toronto, ON M8Z 4E6
Canada
Phone: 905.827.6400
Toll Free: 855.668.8722
Fax: 905.827.6402
canada.inquires@bio-techne.com

Bio-Techne Ltd

19 Barton Lane
Abingdon Science Park
Abingdon, OX14 3NB, United Kingdom
Phone: (44) (0) 1235 529449
Free Phone: 0800 37 34 15
Fax: (44) (0) 1235 533420
info.EMEA@bio-techne.com

General Contact Information

www.novusbio.com
Technical Support: nb-technical@bio-techne.com
Orders: nb-customerservice@bio-techne.com
General: novus@novusbio.com

Products Related to NBP2-02563

HAF007	Goat anti-Mouse IgG Secondary Antibody [HRP]
NB720-B	Rabbit anti-Mouse IgG (H+L) Secondary Antibody [Biotin]
NBP1-96778	Mouse IgG2a Isotype Control (M2A)
H00001544-Q01-10ug	Recombinant Human Cytochrome P450 1A2 GST (N-Term) Protein

Limitations

This product is for research use only and is not approved for use in humans or in clinical diagnosis. Primary Antibodies are guaranteed for 1 year from date of receipt.

For more information on our 100% guarantee, please visit www.novusbio.com/guarantee

Earn gift cards/discounts by submitting a review: www.novusbio.com/reviews/submit/NBP2-02563

Earn gift cards/discounts by submitting a publication using this product:
www.novusbio.com/publications

