

# Product Datasheet

## Nitrilase 1 Antibody (OTI3A11) NBP2-02462

Unit Size: 0.1 ml

Store at -20C. Avoid freeze-thaw cycles.

[www.novusbio.com](http://www.novusbio.com)



[technical@novusbio.com](mailto:technical@novusbio.com)

Protocols, Publications, Related Products, Reviews, Research Tools and Images at:  
[www.novusbio.com/NBP2-02462](http://www.novusbio.com/NBP2-02462)

Updated 10/23/2024 v.20.1

Earn rewards for product  
reviews and publications.

Submit a publication at [www.novusbio.com/publications](http://www.novusbio.com/publications)

Submit a review at [www.novusbio.com/reviews/destination/NBP2-02462](http://www.novusbio.com/reviews/destination/NBP2-02462)



**NBP2-02462**

Nitrilase 1 Antibody (OTI3A11)

**Product Information**

|                                |  |
|--------------------------------|--|
| <b>Unit Size</b>               | 0.1 ml                                   |
| <b>Concentration</b>           | 0.87 mg/ml                               |
| <b>Storage</b>                 | Store at -20C. Avoid freeze-thaw cycles. |
| <b>Clonality</b>               | Monoclonal                               |
| <b>Clone</b>                   | OTI3A11                                  |
| <b>Preservative</b>            | 0.02% Sodium Azide                       |
| <b>Isotype</b>                 | IgG1                                     |
| <b>Purity</b>                  | Immunogen affinity purified              |
| <b>Buffer</b>                  | PBS (pH 7.3), 1.0% BSA and 50% Glycerol  |
| <b>Target Molecular Weight</b> | 35.7 kDa                                 |

**Product Description**

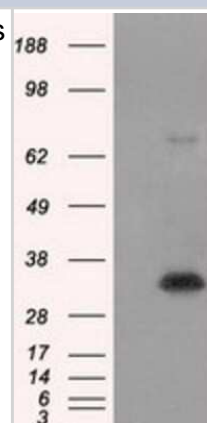
|                         |   |
|-------------------------|---|
| <b>Host</b>             | Mouse   |
| <b>Gene ID</b>          | 4817  |
| <b>Gene Symbol</b>      | NIT1  |
| <b>Species</b>          | Human, Mouse, Rat   |
| <b>Reactivity Notes</b> | Please note that this antibody is reactive to Mouse and derived from the same host, Mouse. Mouse-On-Mouse blocking reagent may be needed for IHC and ICC experiments to reduce high background signal. You can find these reagents under catalog numbers PK-2200-NB and MP-2400-NB. Please contact Technical Support if you have any questions. |
| <b>Immunogen</b>        | Full length human recombinant protein of human NIT1 (NP_005591) produced in HEK293T cell.   |

**Product Application Details**

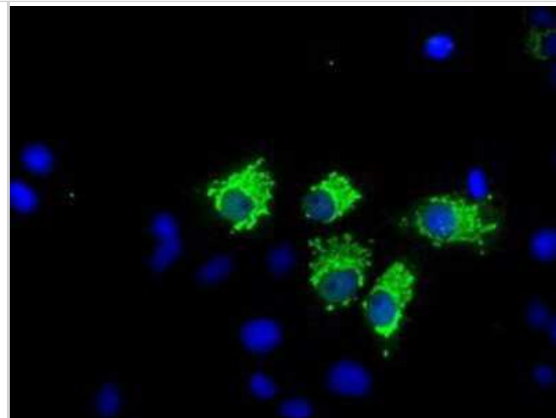
|                              |   |
|------------------------------|---|
| <b>Applications</b>          | Western Blot, Flow Cytometry, Immunocytochemistry/ Immunofluorescence, Immunohistochemistry, Immunohistochemistry-Paraffin                              |
| <b>Recommended Dilutions</b> | Western Blot 1:2000, Flow Cytometry 1:100, Immunohistochemistry 1:50, Immunocytochemistry/ Immunofluorescence 1:100, Immunohistochemistry-Paraffin 1:50 |

**Images**

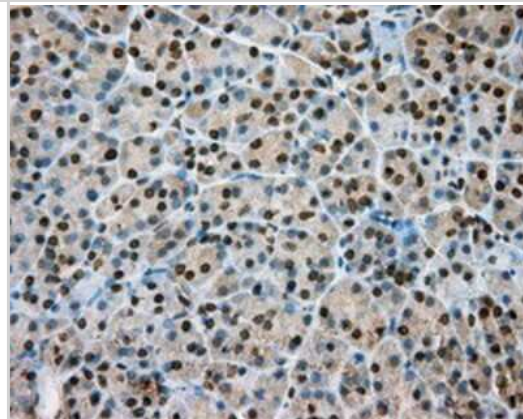
Western Blot: Nitrilase 1 Antibody (3A11) [NBP2-02462] - HEK293T cells were transfected with the pCMV6-ENTRY control (Left lane) or pCMV6-ENTRY Nitrilase 1 (Right lane) cDNA for 48 hrs and lysed. Equivalent amounts of cell lysates (5 ug per lane) were separated by SDS-PAGE and immunoblotted with anti-Nitrilase 1.



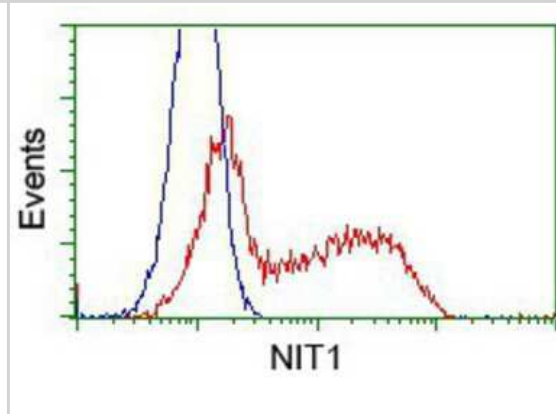
Immunocytochemistry/Immunofluorescence: Nitrilase 1 Antibody (3A11) [NBP2-02462] Staining of COS7 cells transiently transfected by pCMV6-ENTRY Nitrilase 1.



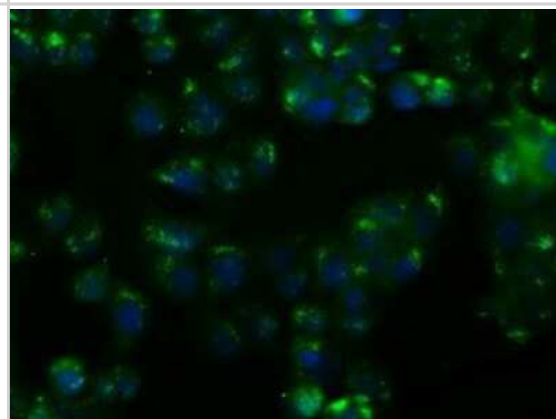
Immunohistochemistry-Paraffin: Nitrilase 1 Antibody (3A11) [NBP2-02462] - Staining of paraffin-embedded pancreas tissue using anti-Nitrilase 1 mouse monoclonal antibody.



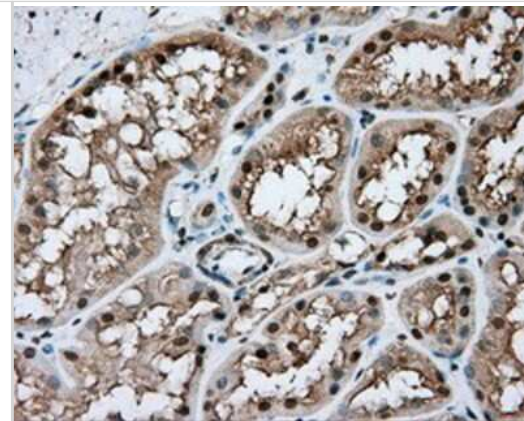
Flow Cytometry: Nitrilase 1 Antibody (3A11) [NBP2-02462] - HEK293T cells transfected with either pCMV6-ENTRY Nitrilase 1.(Red) or empty vector control plasmid (Blue) were immunostained with anti-Nitrilase 1 mouse monoclonal, and then analyzed by flow cytometry.



Immunocytochemistry/Immunofluorescence: Nitrilase 1 Antibody (3A11) [NBP2-02462] - Immunofluorescent staining of HT29 cells using anti-Nitrilase 1 mouse monoclonal antibody.



Immunohistochemistry-Paraffin: Nitrilase 1 Antibody (3A11) [NBP2-02462] - Staining of paraffin-embedded Kidney tissue using anti-Nitrilase 1 mouse monoclonal antibody.





### **Novus Biologicals USA**

10730 E. Briarwood Avenue  
Centennial, CO 80112  
USA  
Phone: 303.730.1950  
Toll Free: 1.888.506.6887  
Fax: 303.730.1966  
nb-customerservice@bio-techne.com

### **Bio-Techne Canada**

21 Canmotor Ave  
Toronto, ON M8Z 4E6  
Canada  
Phone: 905.827.6400  
Toll Free: 855.668.8722  
Fax: 905.827.6402  
canada.inquires@bio-techne.com

### **Bio-Techne Ltd**

19 Barton Lane  
Abingdon Science Park  
Abingdon, OX14 3NB, United Kingdom  
Phone: (44) (0) 1235 529449  
Free Phone: 0800 37 34 15  
Fax: (44) (0) 1235 533420  
info.EMEA@bio-techne.com

### **General Contact Information**

[www.novusbio.com](http://www.novusbio.com)  
Technical Support: nb-technical@bio-techne.com  
Orders: nb-customerservice@bio-techne.com  
General: novus@novusbio.com

### **Products Related to NBP2-02462**

|                    |   |
|--------------------|---|
| HAF007             | Goat anti-Mouse IgG Secondary Antibody [HRP]            |
| NB720-B            | Rabbit anti-Mouse IgG (H+L) Secondary Antibody [Biotin] |
| NBP1-97005-0.5mg   | Mouse IgG1 Isotype Control (MG1)                        |
| H00004817-P01-10ug | Recombinant Human Nitrilase 1 GST (N-Term) Protein      |

### **Limitations**

This product is for research use only and is not approved for use in humans or in clinical diagnosis. Primary Antibodies are guaranteed for 1 year from date of receipt.

For more information on our 100% guarantee, please visit [www.novusbio.com/guarantee](http://www.novusbio.com/guarantee)

Earn gift cards/discounts by submitting a review: [www.novusbio.com/reviews/submit/NBP2-02462](http://www.novusbio.com/reviews/submit/NBP2-02462)

Earn gift cards/discounts by submitting a publication using this product:  
[www.novusbio.com/publications](http://www.novusbio.com/publications)

