

Product Datasheet

Natriuretic Peptide Receptor C Antibody (OTI2G2) NBP2-02347

Unit Size: 0.1 ml

Store at -20C. Avoid freeze-thaw cycles.

www.novusbio.com



technical@novusbio.com

Protocols, Publications, Related Products, Reviews, Research Tools and Images at:
www.novusbio.com/NBP2-02347

Updated 7/4/2018 v.20.1

Earn rewards for product
reviews and publications.

Submit a publication at www.novusbio.com/publications

Submit a review at www.novusbio.com/reviews/destination/NBP2-02347



NBP2-02347**Natriuretic Peptide Receptor C Antibody (OTI2G2)**

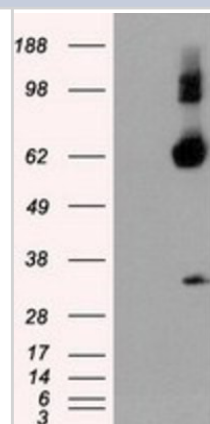
Product Information	
Unit Size	0.1 ml
Concentration	Please see the vial label for concentration. If unlisted please contact technical services.
Storage	Store at -20C. Avoid freeze-thaw cycles.
Clonality	Monoclonal
Clone	OTI2G2
Preservative	0.02% Sodium Azide
Isotype	IgG2b
Purity	Immunogen affinity purified
Buffer	PBS (pH 7.3), 1.0% BSA and 50% Glycerol
Target Molecular Weight	59.8 kDa

Product Description	
Host	Mouse
Gene ID	4883
Gene Symbol	NPR3
Species	Human
Reactivity Notes	Human
Immunogen	Full length human recombinant protein of human NPR3 (NP_000899) produced in HEK293T cell.

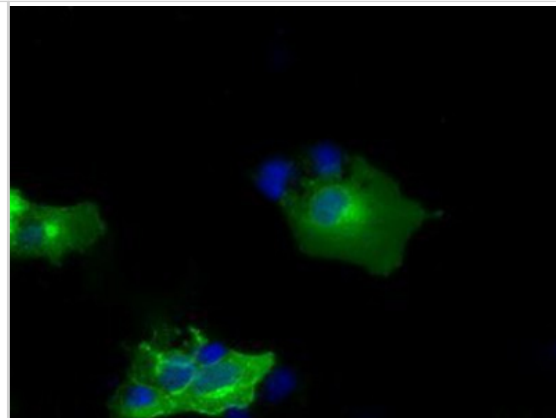
Product Application Details	
Applications	Western Blot, Flow Cytometry, Immunocytochemistry/Immunofluorescence, Immunohistochemistry, Immunohistochemistry-Paraffin
Recommended Dilutions	Western Blot 1:2000, Flow Cytometry 1:10-1:1000, Immunohistochemistry 1:10-1:500, Immunocytochemistry/Immunofluorescence 1:100, Immunohistochemistry-Paraffin 1:50

Images

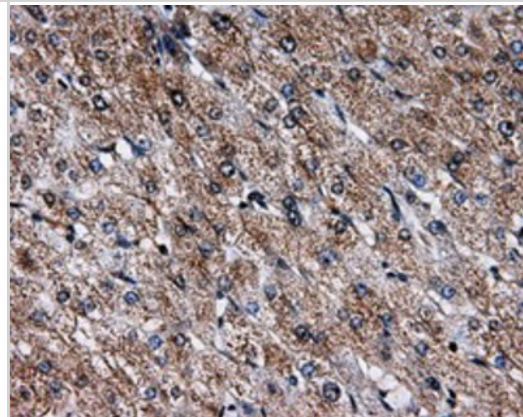
Western Blot: Natriuretic Peptide Receptor C Antibody (2G2) [NBP2-02347] - HEK293T cells were transfected with the pCMV6-ENTRY control (Left lane) or pCMV6-ENTRY Natriuretic Peptide Receptor C (Right lane) cDNA for 48 hrs and lysed. Equivalent amounts of cell lysates (5 ug per lane) were separated by SDS-PAGE and immunoblotted with anti-Natriuretic Peptide Receptor C.



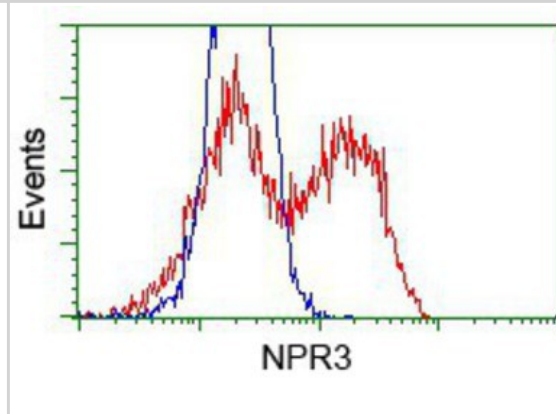
Immunocytochemistry/Immunofluorescence: Natriuretic Peptide Receptor C Antibody (2G2) [NBP2-02347] Staining of COS7 cells transiently transfected by pCMV6-ENTRY Natriuretic Peptide Receptor C.



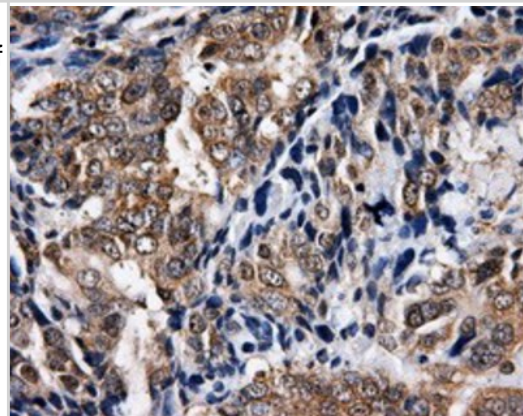
Immunohistochemistry-Paraffin: Natriuretic Peptide Receptor C Antibody (2G2) [NBP2-02347] - Staining of paraffin-embedded liver tissue using anti-Natriuretic Peptide Receptor C mouse monoclonal antibody.



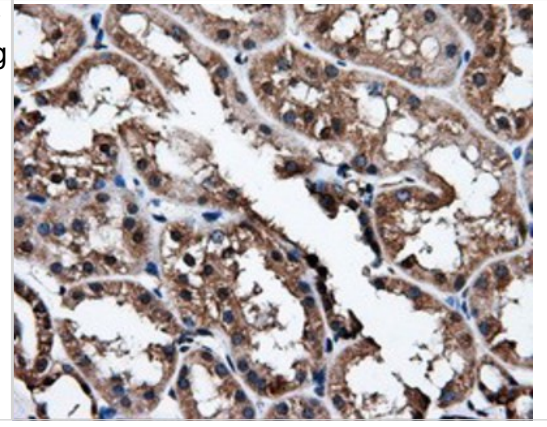
Flow Cytometry: Natriuretic Peptide Receptor C Antibody (2G2) [NBP2-02347] - HEK293T cells transfected with either pCMV6-ENTRY Natriuretic Peptide Receptor C.(Red) or empty vector control plasmid (Blue) were immunostained with anti-Natriuretic Peptide Receptor C mouse monoclonal, and then analyzed by flow cytometry.



Immunohistochemistry-Paraffin: Natriuretic Peptide Receptor C Antibody (2G2) [NBP2-02347] - Staining of paraffin-embedded Adenocarcinoma of ovary tissue using anti-Natriuretic Peptide Receptor C mouse monoclonal antibody.



Immunohistochemistry-Paraffin: Natriuretic Peptide Receptor C Antibody (2G2) [NBP2-02347] - Staining of paraffin-embedded Kidney tissue using anti-Natriuretic Peptide Receptor C mouse monoclonal antibody.





Novus Biologicals USA

8100 Southpark Way, A-8
Littleton, CO 80120
USA

Phone: 303.730.1950
Toll Free: 1.888.506.6887
Fax: 303.730.1966
novus@novusbio.com

Novus Biologicals Canada

461 North Service Road West, Unit B37
Oakville, ON L6M 2V5
Canada

Phone: 905.827.6400
Toll Free: 855.668.8722
Fax: 905.827.6402
canada@novusbio.com

Novus Biologicals Europe

19 Barton Lane
Abingdon Science Park
Abingdon, OX14 3NB, United Kingdom

Phone: (44) (0) 1235 529449
Free Phone: 0800 37 34 15
Fax: (44) (0) 1235 533420
info@bio-techne.com

General Contact Information

www.novusbio.com
Technical Support: technical@novusbio.com
Orders: orders@novusbio.com
General: novus@novusbio.com

Limitations

This product is for research use only and is not approved for use in humans or in clinical diagnosis. Primary Antibodies are guaranteed for 1 year from date of receipt.

For more information on our 100% guarantee, please visit www.novusbio.com/guarantee

Earn gift cards/discounts by submitting a review: www.novusbio.com/reviews/submit/NBP2-02347

Earn gift cards/discounts by submitting a publication using this product:
www.novusbio.com/publications

