

Product Datasheet

ATPB Antibody (OTI4E5) NBP2-02249

Unit Size: 0.1 ml

Store at -20C. Avoid freeze-thaw cycles.

www.novusbio.com



technical@novusbio.com

Protocols, Publications, Related Products, Reviews, Research Tools and Images at:
www.novusbio.com/NBP2-02249

Updated 10/23/2024 v.20.1

Earn rewards for product
reviews and publications.

Submit a publication at www.novusbio.com/publications

Submit a review at www.novusbio.com/reviews/destination/NBP2-02249



NBP2-02249

ATPB Antibody (OTI4E5)

Product Information

Unit Size	0.1 ml
Concentration	0.9 mg/ml
Storage	Store at -20C. Avoid freeze-thaw cycles.
Clonality	Monoclonal
Clone	OTI4E5
Preservative	0.02% Sodium Azide
Isotype	IgG2a
Purity	Immunogen affinity purified
Buffer	PBS (pH 7.3), 1.0% BSA and 50% Glycerol
Target Molecular Weight	56.6 kDa

Product Description

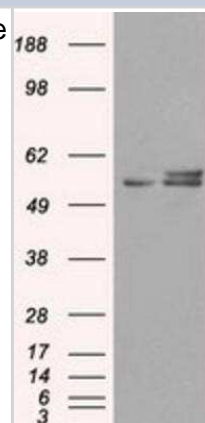
Host	Mouse
Gene ID	506
Gene Symbol	ATP5F1B
Species	Human, Rat, Canine, Primate, Monkey
Immunogen	Full length human recombinant protein of human ATP5B (NP_001677) produced in HEK293T cell.

Product Application Details

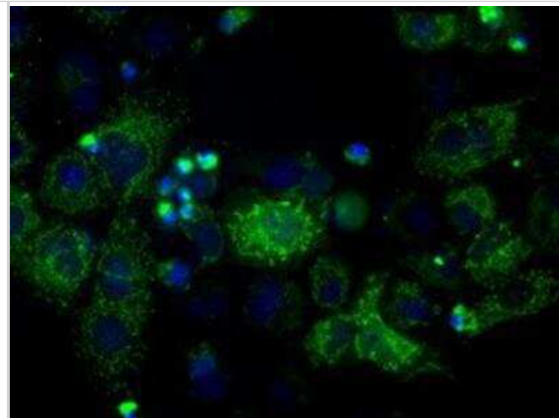
Applications	Western Blot, Flow Cytometry, Immunocytochemistry/ Immunofluorescence, Immunohistochemistry, Immunohistochemistry-Paraffin
Recommended Dilutions	Western Blot 1:1000, Flow Cytometry 1:100, Immunohistochemistry 1:10-1:500, Immunocytochemistry/ Immunofluorescence 1:100, Immunohistochemistry-Paraffin 1:50

Images

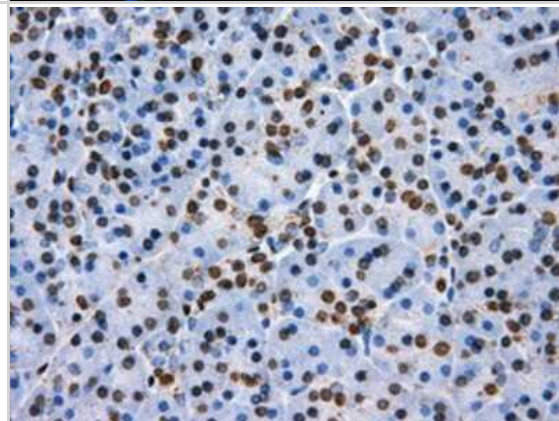
Western Blot: ATPB Antibody (4E5) [NBP2-02249] - HEK293T cells were transfected with the pCMV6-ENTRY control (Left lane) or pCMV6-ENTRY ATPB (Right lane) cDNA for 48 hrs and lysed. Equivalent amounts of cell lysates (5 ug per lane) were separated by SDS-PAGE and immunoblotted with anti-ATPB.



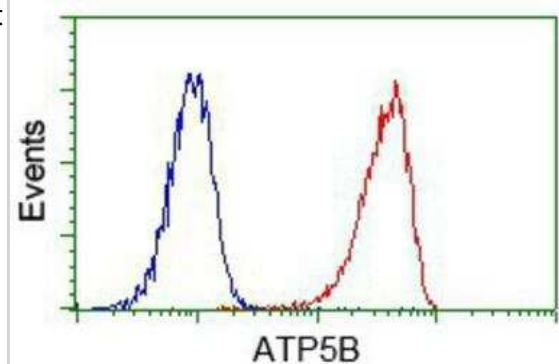
Immunocytochemistry/Immunofluorescence: ATPB Antibody (4E5) [NBP2-02249] - Staining of COS7 cells transiently transfected by pCMV6-ENTRY ATPB.



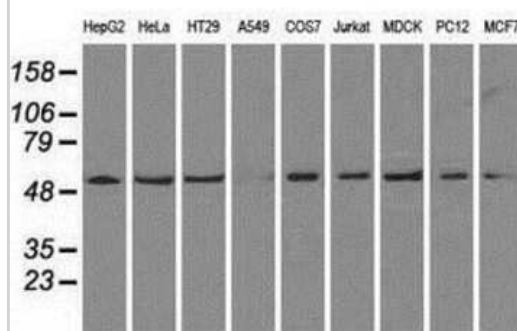
Immunohistochemistry-Paraffin: ATPB Antibody (4E5) [NBP2-02249] - Staining of paraffin-embedded pancreas tissue using anti-ATPB mouse monoclonal antibody.



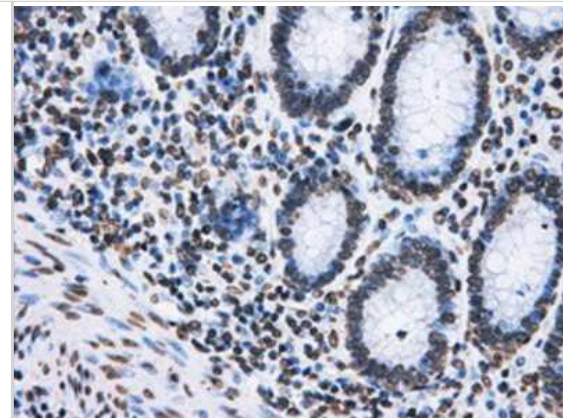
Flow Cytometry: ATPB Antibody (4E5) [NBP2-02249] - Analysis of Jurkat cells, using anti-ATPB antibody, (Red) compared to a nonspecific negative control antibody (Blue).



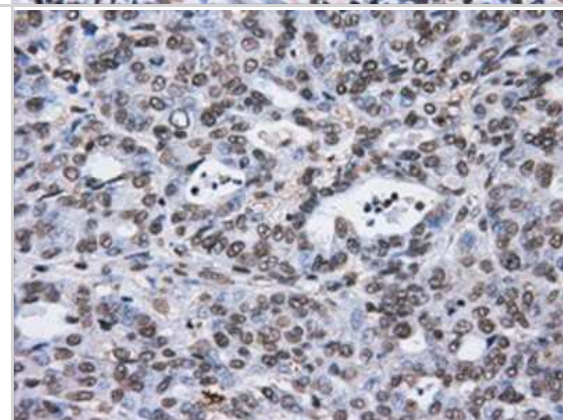
Western Blot: ATPB Antibody (4E5) [NBP2-02249] Analysis of extracts (35ug) from 9 different cell lines by using anti-ATPB monoclonal antibody.



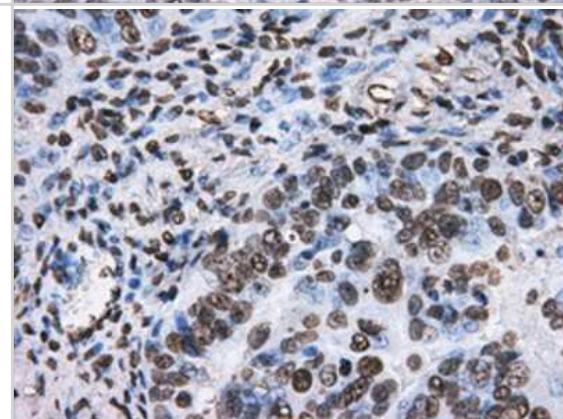
Immunohistochemistry-Paraffin: ATPB Antibody (4E5) [NBP2-02249] - Staining of paraffin-embedded Adenocarcinoma of colon tissue using anti-ATPB mouse monoclonal antibody.



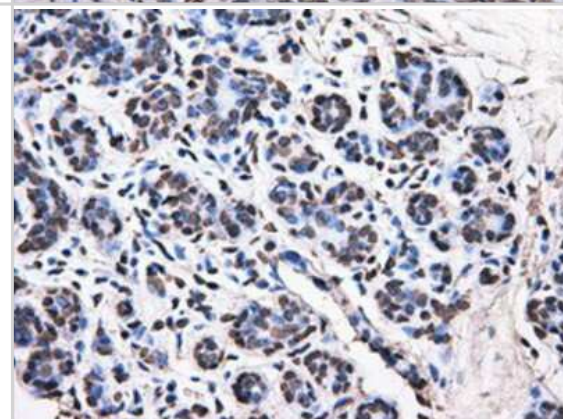
Immunohistochemistry-Paraffin: ATPB Antibody (4E5) [NBP2-02249] - Staining of paraffin-embedded Adenocarcinoma of endometrium tissue using anti-ATPB mouse monoclonal antibody.



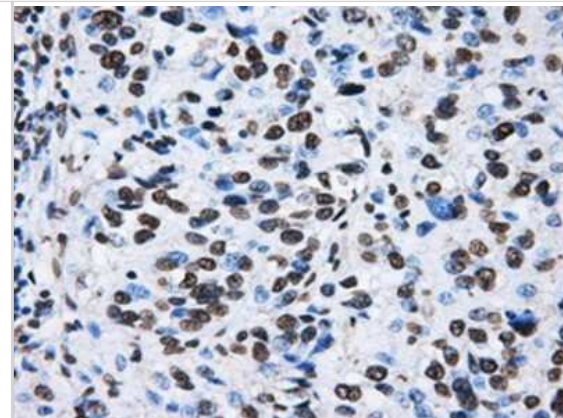
Immunohistochemistry-Paraffin: ATPB Antibody (4E5) [NBP2-02249] - Staining of paraffin-embedded Adenocarcinoma of ovary tissue using anti-ATPB mouse monoclonal antibody.



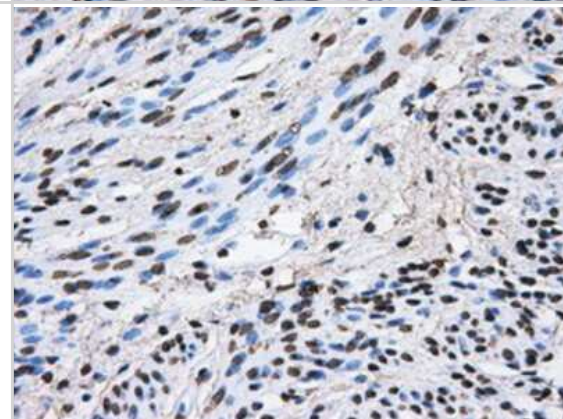
Immunohistochemistry-Paraffin: ATPB Antibody (4E5) [NBP2-02249] - Staining of paraffin-embedded breast tissue using anti-ATPB mouse monoclonal antibody.



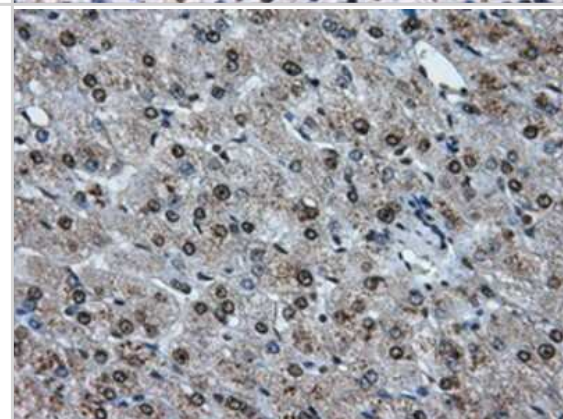
Immunohistochemistry-Paraffin: ATPB Antibody (4E5) [NBP2-02249] - Staining of paraffin-embedded Carcinoma of bladder tissue using anti-ATPB mouse monoclonal antibody.



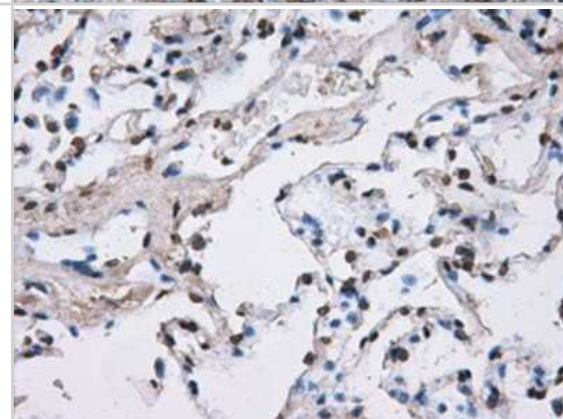
Immunohistochemistry-Paraffin: ATPB Antibody (4E5) [NBP2-02249] - Staining of paraffin-embedded endometrium tissue using anti-ATPB mouse monoclonal antibody.



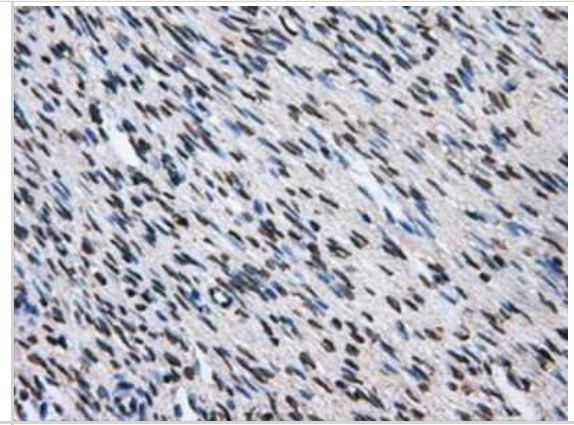
Immunohistochemistry-Paraffin: ATPB Antibody (4E5) [NBP2-02249] - Staining of paraffin-embedded liver tissue using anti-ATPB mouse monoclonal antibody.



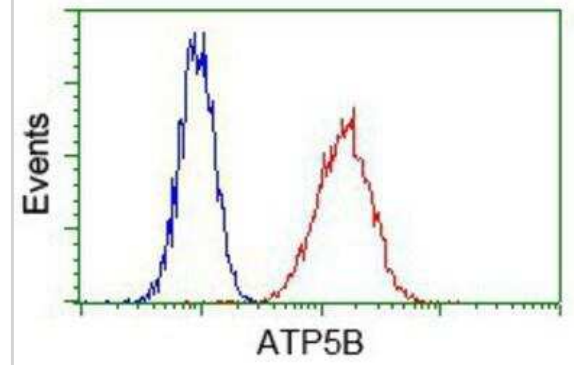
Immunohistochemistry-Paraffin: ATPB Antibody (4E5) [NBP2-02249] - Staining of paraffin-embedded lung tissue using anti-ATPB mouse monoclonal antibody.



Immunohistochemistry-Paraffin: ATPB Antibody (4E5) [NBP2-02249] - Staining of paraffin-embedded Ovary tissue using anti-ATPB mouse monoclonal antibody.



Flow Cytometry: ATPB Antibody (4E5) [NBP2-02249] - Analysis of Hela cells, using anti-ATPB antibody, (Red) compared to a nonspecific negative control antibody (Blue).





Novus Biologicals USA

10730 E. Briarwood Avenue
Centennial, CO 80112
USA
Phone: 303.730.1950
Toll Free: 1.888.506.6887
Fax: 303.730.1966
nb-customerservice@bio-techne.com

Bio-Techne Canada

21 Canmotor Ave
Toronto, ON M8Z 4E6
Canada
Phone: 905.827.6400
Toll Free: 855.668.8722
Fax: 905.827.6402
canada.inquires@bio-techne.com

Bio-Techne Ltd

19 Barton Lane
Abingdon Science Park
Abingdon, OX14 3NB, United Kingdom
Phone: (44) (0) 1235 529449
Free Phone: 0800 37 34 15
Fax: (44) (0) 1235 533420
info.EMEA@bio-techne.com

General Contact Information

www.novusbio.com
Technical Support: nb-technical@bio-techne.com
Orders: nb-customerservice@bio-techne.com
General: novus@novusbio.com

Products Related to NBP2-02249

HAF007	Goat anti-Mouse IgG Secondary Antibody [HRP]
NB720-B	Rabbit anti-Mouse IgG (H+L) Secondary Antibody [Biotin]
NBP1-96778	Mouse IgG2a Isotype Control (M2A)
H00000506-P01-10ug	Recombinant Human ATPB GST (N-Term) Protein

Limitations

This product is for research use only and is not approved for use in humans or in clinical diagnosis. Primary Antibodies are guaranteed for 1 year from date of receipt.

For more information on our 100% guarantee, please visit www.novusbio.com/guarantee

Earn gift cards/discounts by submitting a review: www.novusbio.com/reviews/submit/NBP2-02249

Earn gift cards/discounts by submitting a publication using this product:
www.novusbio.com/publications

