

Product Datasheet

IBRDC2 Antibody (OTI6B11)

NBP2-02145

Unit Size: 0.1 ml

Store at 4C short term. Aliquot and store at -20C long term. Avoid freeze-thaw cycles.

www.novusbio.com



technical@novusbio.com

Protocols, Publications, Related Products, Reviews, Research Tools and Images at:
www.novusbio.com/NBP2-02145

Updated 1/26/2018 v.20.1

Earn rewards for product
reviews and publications.

Submit a publication at www.novusbio.com/publications

Submit a review at www.novusbio.com/reviews/destination/NBP2-02145



NBP2-02145

IBRDC2 Antibody (OTI6B11)

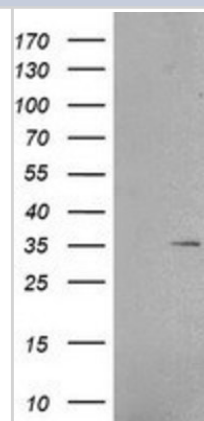
Product Information	
Unit Size	0.1 ml
Concentration	Please see the vial label for concentration. If unlisted please contact technical services.
Storage	Store at 4C short term. Aliquot and store at -20C long term. Avoid freeze-thaw cycles.
Clonality	Monoclonal
Clone	OTI6B11
Preservative	0.02% Sodium Azide
Isotype	IgG1
Purity	Immunogen affinity purified
Buffer	PBS (pH 7.3), 1.0% BSA and 50% Glycerol

Product Description	
Host	Mouse
Gene ID	255488
Gene Symbol	RNF144B
Species	Human
Reactivity Notes	Human
Immunogen	Full length human recombinant protein of human RNF144B (NP_877434) produced in HEK293T cell.

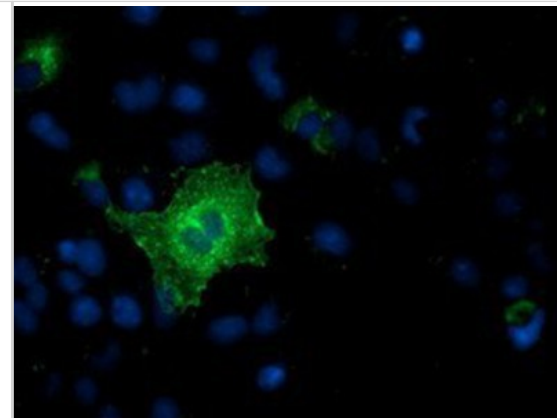
Product Application Details	
Applications	Western Blot, Flow Cytometry, Immunocytochemistry/Immunofluorescence
Recommended Dilutions	Western Blot 1:500, Flow Cytometry 1:100, Immunocytochemistry/Immunofluorescence 1:100

Images

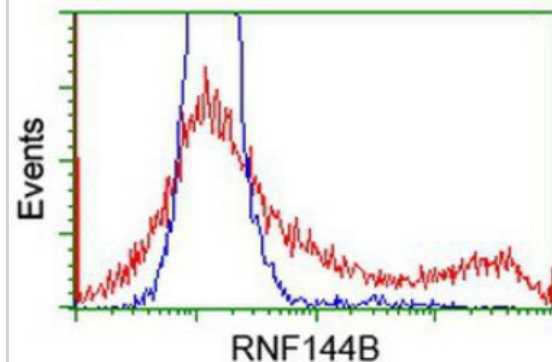
Western Blot: IBRDC2 Antibody (6B11) [NBP2-02145] - HEK293T cells were transfected with the pCMV6-ENTRY control (Left lane) or pCMV6-ENTRY IBRDC2 (Right lane) cDNA for 48 hrs and lysed. Equivalent amounts of cell lysates (5 ug per lane) were separated by SDS-PAGE and immunoblotted with anti-IBRDC2.



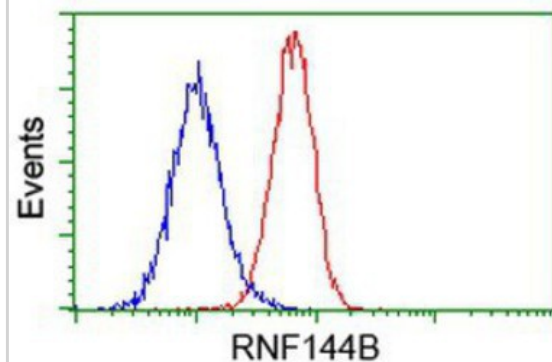
Immunocytochemistry/Immunofluorescence: IBRDC2 Antibody (6B11) [NBP2-02145] Staining of COS7 cells transiently transfected by pCMV6-ENTRY IBRDC2.



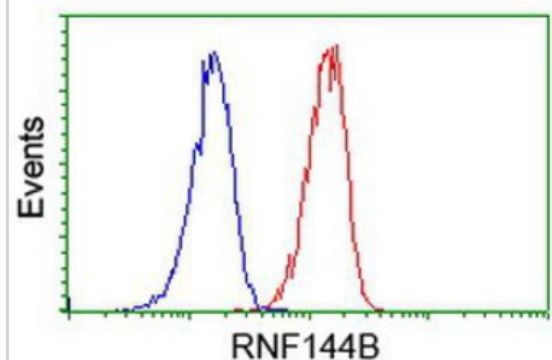
Flow Cytometry: IBRDC2 Antibody (6B11) [NBP2-02145] - HEK293T cells transfected with either overexpression plasmid (Red) or empty vector control plasmid (Blue) were immunostained by anti-IBRDC2 antibody, and then analyzed by flow cytometry.



Flow Cytometry: IBRDC2 Antibody (6B11) [NBP2-02145] - Analysis of HeLa cells, using anti-IBRDC2 antibody, (Red), compared to a nonspecific negative control antibody (Blue).



Flow Cytometry: IBRDC2 Antibody (6B11) [NBP2-02145] - Analysis of Jurkat cells, using anti-IBRDC2 antibody, (Red), compared to a nonspecific negative control antibody (Blue).





Novus Biologicals USA

8100 Southpark Way, A-8
Littleton, CO 80120
USA

Phone: 303.730.1950
Toll Free: 1.888.506.6887
Fax: 303.730.1966
novus@novusbio.com

Novus Biologicals Canada

461 North Service Road West, Unit B37
Oakville, ON L6M 2V5
Canada

Phone: 905.827.6400
Toll Free: 855.668.8722
Fax: 905.827.6402
canada@novusbio.com

Novus Biologicals Europe

19 Barton Lane
Abingdon Science Park
Abingdon, OX14 3NB, United Kingdom
Phone: (44) (0) 1235 529449
Free Phone: 0800 37 34 15
Fax: (44) (0) 1235 533420
info@bio-techne.com

General Contact Information

www.novusbio.com
Technical Support: technical@novusbio.com
Orders: orders@novusbio.com
General: novus@novusbio.com

Limitations

This product is for research use only and is not approved for use in humans or in clinical diagnosis. Primary Antibodies are guaranteed for 1 year from date of receipt.

For more information on our 100% guarantee, please visit www.novusbio.com/guarantee

Earn gift cards/discounts by submitting a review: www.novusbio.com/reviews/submit/NBP2-02145

Earn gift cards/discounts by submitting a publication using this product:
www.novusbio.com/publications

